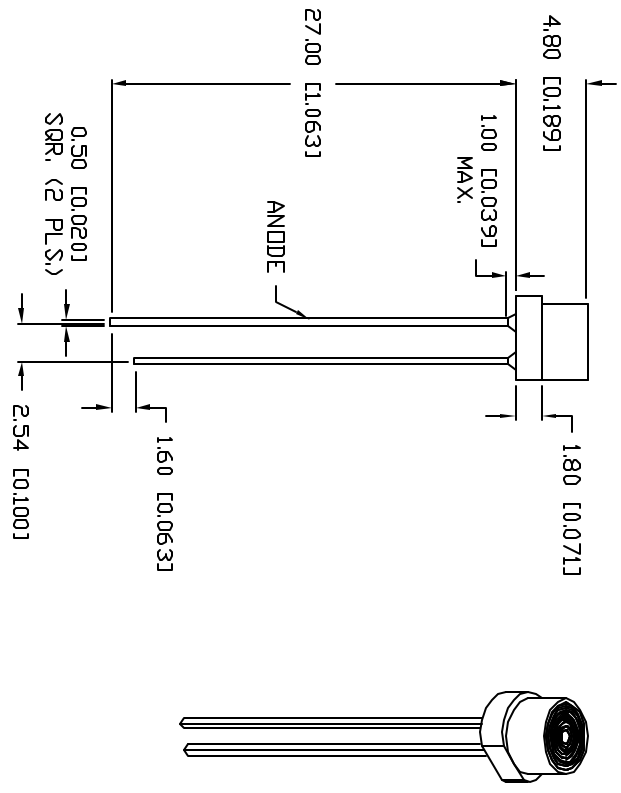
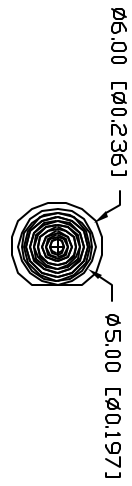


PART NUMBER			REV.
SSL-LX433GD			B
REV.	E.C.N. NUMBER AND REVISION COMMENTS	DATE	
A	UPDATED SPECS.	1.30.95	
B	E.C.N. #10BRDR. & REDRAWN IN 3D.	4.19.01	



ELECTRO-OPTICAL CHARACTERISTICS I _A =25°C I _f =20mA				
PARAMETER	MIN	TYP	MAX	UNITS
PEAK WAVELENGTH		565		nm
FORWARD VOLTAGE		2.2	2.6	V _f
REVERSE VOLTAGE	5.0			V _r
AXIAL INTENSITY		10		mcd
VIEWING ANGLE		120		2x theta
EMITTED COLOR:	GREEN			
EPOXY LENS FINISH:	GREEN DIFFUSED			

LIMITS OF SAFE OPERATION AT 25°C		
PARAMETER	MAX	UNITS
PEAK FORWARD CURRENT*	150	mA
STEADY CURRENT	25	mA
POWER DISSIPATION	105	mW
DERATE FROM 25°C	-1.2	mW/°C
OPERATING, STORAGE TEMP.	-40 TO +85	°C
SOLDERING TEMP.	+260	°C
2.0mm FROM BODY		3 SEC. MAX
* t<10µs		

*UNLESS OTHERWISE SPECIFIED TOLERANCES PER DECIMAL PRECISION ARE: X=±1 (+0.039), X.X=±0.5 (+0.020), X.X.X=±0.25 (+0.010), X.XXX=±0.127 (+0.005), LEAD SIZE=±0.08 (+0.002), LEAD LENGTH=±0.75 (+0.030), MM=±0.00

REV.
B

PART NUMBER
SSL-LX433GD

T=5mm (T=1 3/4) 565nm GREEN LED,
GREEN DIFFUSED FREZNEEL LENS.

CONFIDENTIAL INFORMATION
THE INFORMATION CONTAINED IN THIS DOCUMENT IS THE PROPERTY OF LUMEX INC. EXCEPT AS SPECIFICALLY AUTHORIZED IN WRITING BY LUMEX INC., THE HOLDER OF THIS DOCUMENT SHALL KEEP ALL INFORMATION CONTAINED HEREIN CONFIDENTIAL AND SHALL PROTECT SAME IN WHOLE OR IN PART FROM DISCLOSURE AND OBTAINMENT BY ALL THIRD PARTIES.

RELIABILITY NOTE
OUR MANY YEARS OF EXPERIENCE DATA ACCUMULATION INDICATE THAT SOLDER HEAT IS A MAJOR CAUSE OF EARLY AND FUTURE FAILURE. PLEASE PAY ATTENTION TO YOUR SOLDERING PROCESS.

LUMEX INC.
290 E. HELEN ROAD
PALATINE, IL 60067-6976
PHONE: +1.847.359.2790
US WEB: www.lumex.com
TW WEB: www.lumex.com.tw

DRAWN BY: BIC
CHECKED BY:
APPROVED BY:
DATE: 3.9.92
PAGE: 1 OF 1
SCALE: N/A