

FEATURES

PETERMANN

TECHNIK

Time & Frequency Components

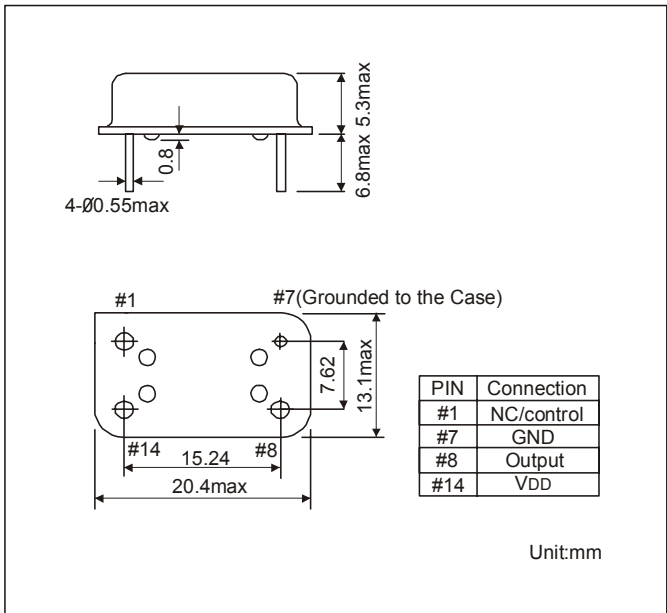
- HIGH RELIABILITY FOR LOW COST
- WIDE FREQUENCY RANGE
- FREQUENCY STABILITY OF ± 10 PPM AVAILABLE
- AVAILABLE IN 5.0 AND 3.3 VOLT
- CHEAPEST AVAILABLE LEADED VCXO
- EXTENDED TEMPERATURE RANGE TO $-40/+85^{\circ}\text{C}$ AVAILABLE
- APPLICATIONS: FIBER CHANEL, GIGABIT ETHERNET, SET-TOP BOX, BROADBAND, TELECOM, ETC.

PROCESSOR TYPE		SGS THOMSON STI 5512	
SERIES		VCXO	
PACKAGES		14 DIP OR 8 DIP	
FREQUENCY		27.000 MHz	
FREQUENCY STABILITY		± 25 PPM	
OPERATING TEMPERATURE		$0/+70^{\circ}\text{C}$	
STORAGE TEMPERATURE RANGE		$-40/+85^{\circ}\text{C}$	
INPUT	VOLTAGE	$+5.0$ VDC $\pm 5\%$	
	CURRENT	35 mA MAX.	
OUTPUT	SYMMETRY	40/60%	
	SIGNAL	CMOS	
	RISE AND FALL TIME	10 ns max.	
	"0" LEVEL	0.1 VDD MAX.	
	"1" LEVEL	0.9 VDD MIN.	
	LOAD	15 PF MAX.	
START-UP TIME		10 mS max.	
INPUT IMPEDANCE		50 k Ω min.	
CONTROL VOLTAGE RANGE		$0.5 \sim 4.5$ VDC	
CENTER VOLTAGE		2.5 VDC	
PULLABILITY		± 100 ppm min.	
LINEARITY		10% max.	
SLOPE		POSITIVE	
PIN CONNECTION	PACKAGE	14 DIP	8 IP
	CONTROL VOLTAGE	PIN# 1	PIN# 1
	GROUND	PIN# 7	PIN# 4
	OUTPUT	PIN# 8	PIN# 5
	INPUT VOLTAGE	PIN# 14	PIN# 8
OTHER PARAMETERS ARE AVAILABLE ON REQUEST / CREATE HERE YOUR SPECIFICATION			

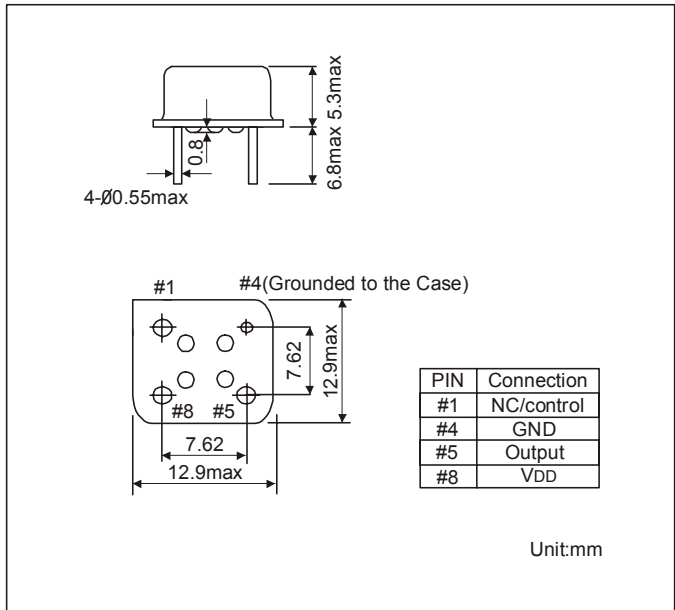
PART NUMBERING SYSTEM

EXAMPLE	VCXO DIP8 27.000 MHz THOMSON STI 5512
SERIES	VCXO
PACKAGE	DIP 14 OR DIP 8
PROCESSOR TYPE	SGS THOMSON STI 5512

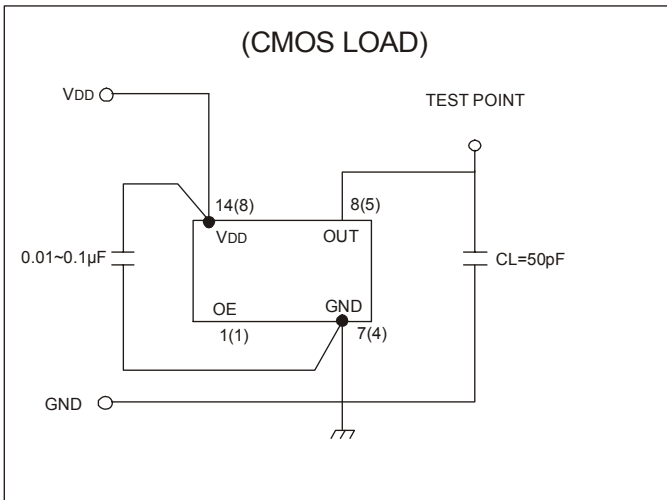
OUTLINE DRAWING OF DIP 14



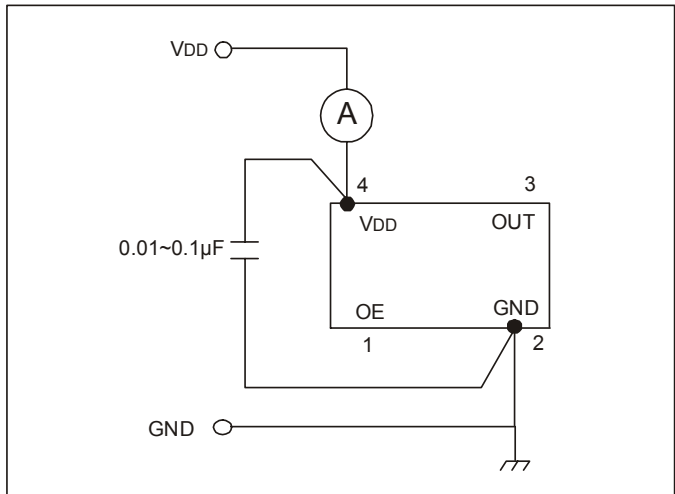
OUTLINE DRAWING OF DIP 8



TEST CIRCUIT



RECOMMENDED PIN CONNECTION



OUTPUT WAVE FORM OF CMOS

