

Bi-Directional Triode Thyristor

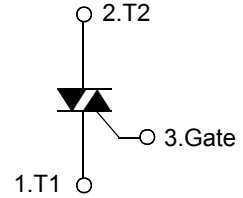
Features

- ◆ Repetitive Peak Off-State Voltage : 600V
- ◆ R.M.S On-State Current ($I_{T(RMS)} = 8\text{ A}$)
- ◆ High Commutation dv/dt
- ◆ Non-isolated Type

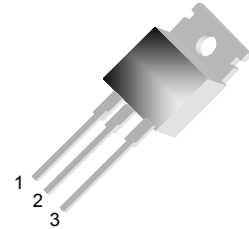
General Description

This device is suitable for AC switching application, phase control application such as fan speed and temperature modulation control, lighting control and static switching relay.

Symbol



TO-220



Absolute Maximum Ratings ($T_J = 25^\circ\text{C}$ unless otherwise specified)

Symbol	Parameter	Condition	Ratings	Units
V_{DRM}	Repetitive Peak Off-State Voltage		600	V
$I_{T(RMS)}$	R.M.S On-State Current	$T_C = 105^\circ\text{C}$	8.0	A
I_{TSM}	Surge On-State Current	One Cycle, 50Hz/60Hz, Peak, Non-Repetitive	80/88	A
I^2_t	I^2_t		32	A^2s
P_{GM}	Peak Gate Power Dissipation		5.0	W
$P_{G(AV)}$	Average Gate Power Dissipation		0.5	W
I_{GM}	Peak Gate Current		2.0	A
V_{GM}	Peak Gate Voltage		10	V
T_J	Operating Junction Temperature		- 40 ~ 125	$^\circ\text{C}$
T_{STG}	Storage Temperature		- 40 ~ 150	$^\circ\text{C}$
	Mass		2.0	g

STP8A60

Electrical Characteristics

Symbol	Items		Conditions	Ratings			Unit
				Min.	Typ.	Max.	
I _{DRM}	Repetitive Peak Off-State Current		V _D = V _{DRM} , Single Phase, Half Wave T _J = 125 °C	—	—	2.0	mA
V _{TM}	Peak On-State Voltage		I _T = 12 A, Inst. Measurement	—	—	1.4	V
I ⁺ _{GT1}	I	Gate Trigger Current	V _D = 6 V, R _L =10 Ω	—	—	30	mA
I ⁻ _{GT1}	II			—	—	30	
I ⁻ _{GT3}	III			—	—	30	
V ⁺ _{GT1}	I	Gate Trigger Voltage	V _D = 6 V, R _L =10 Ω	—	—	1.5	V
V ⁻ _{GT1}	II			—	—	1.5	
V _{GT3}	III			—	—	1.5	
V _{GD}	Non-Trigger Gate Voltage		T _J = 125 °C, V _D = 1/2 V _{DRM}	0.2	—	—	V
(dv/dt) _c	Critical Rate of Rise Off-State Voltage at Commutation		T _J = 125 °C, [di/dt] _c = -4.0 A/ms, V _D =2/3 V _{DRM}	10	—	—	V/μs
I _H	Holding Current			—	15	—	mA
R _{th(j-c)}	Thermal Impedance		Junction to case	—	—	2.0	°C/W

Fig 1. Gate Characteristics

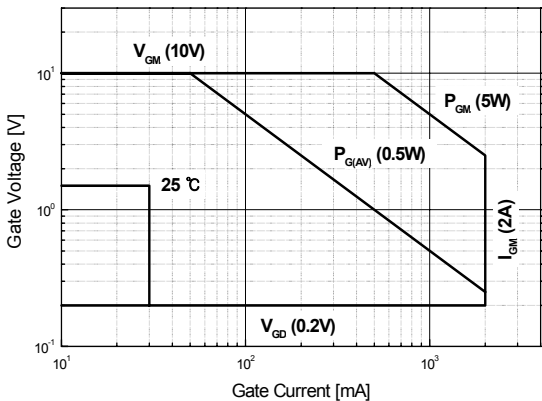


Fig 2. On-State Voltage

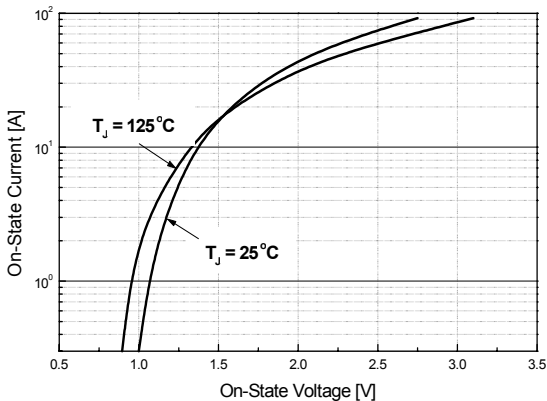


Fig 3. On State Current vs. Maximum Power Dissipation

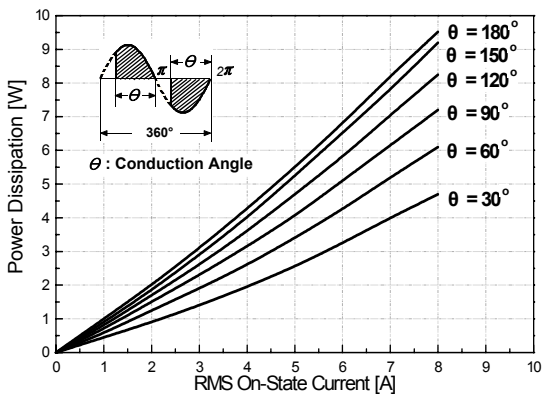


Fig 4. On State Current vs. Allowable Case Temperature

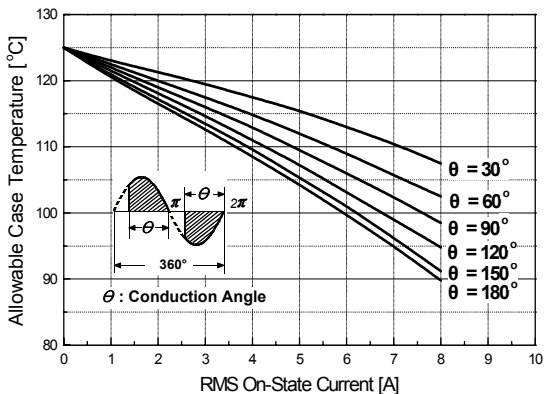


Fig 5. Surge On-State Current Rating (Non-Repetitive)

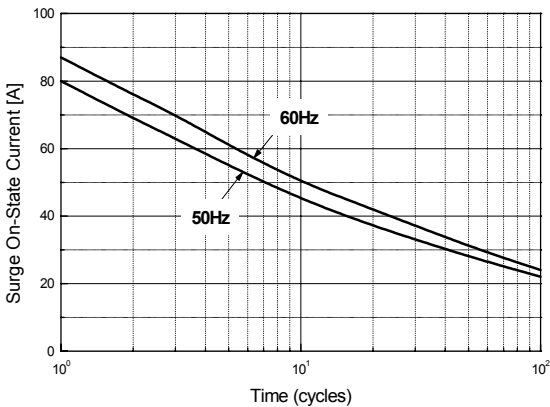
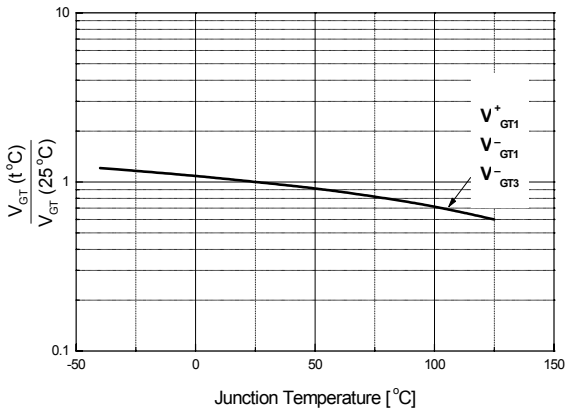


Fig 6. Gate Trigger Voltage vs. Junction Temperature



STP8A60

Fig 7. Gate Trigger Current vs. Junction Temperature

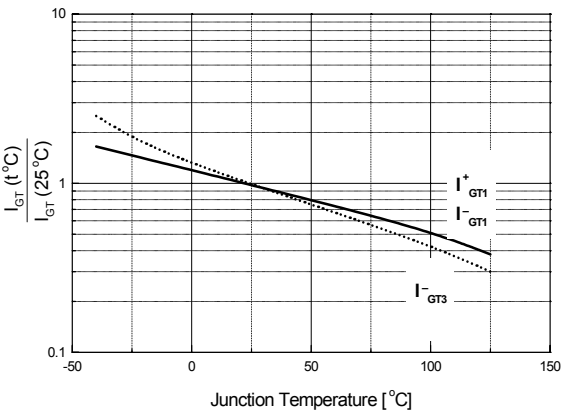


Fig 8. Transient Thermal Impedance

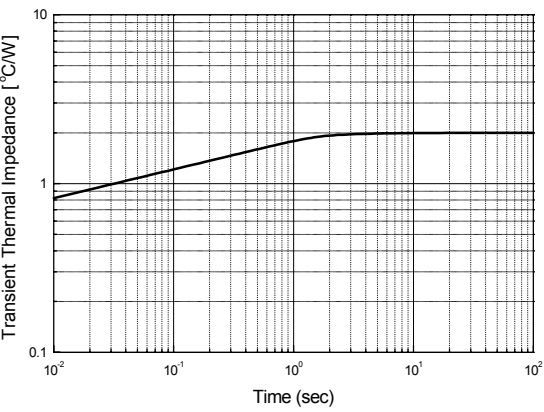
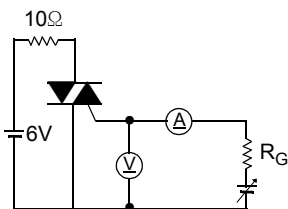
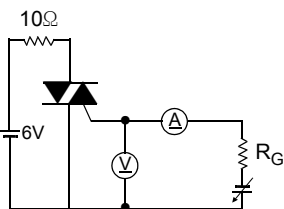


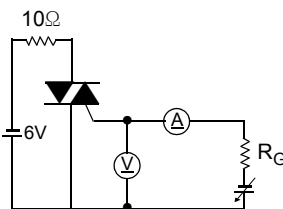
Fig 9. Gate Trigger Characteristics Test Circuit



Test Procedure I



Test Procedure II



Test Procedure III



STP8A60

TO-220 Package Dimension

Dim.	mm			Inch		
	Min.	Typ.	Max.	Min.	Typ.	Max.
A	9.7		10.1	0.382		0.398
B	6.3		6.7	0.248		0.264
C	9.0		9.47	0.354		0.373
D	12.8		13.3	0.504		0.524
E	1.2		1.4	0.047		0.055
F		1.7			0.067	
G		2.5			0.098	
H	3.0		3.4	0.118		0.134
I	1.25		1.4	0.049		0.055
J	2.4		2.7	0.094		0.106
K	5.0		5.15	0.197		0.203
L	2.2		2.6	0.087		0.102
M	1.25		1.55	0.049		0.061
N	0.45		0.6	0.018		0.024
O	0.6		1.0	0.024		0.039
ϕ		3.6			0.142	

