

SERIES UHD-400, UHD-400-1, AND UHD-500 POWER AND RELAY DRIVERS MIL-STD-883 Compliant

FEATURES

- 500 mA Output Current-Sink Capability
- Four Logic Types
- Pinning Compatible with 54/74 Logic Series
- High-Voltage Output:
 - 100 V Series UHD-500
 - 70 V Series UHD-400-1
 - 40 V Series UHD-400

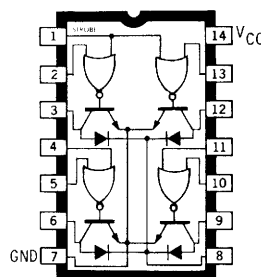
COMBINING LOGIC GATES and high-current switching transistors, these hermetically packaged, monolithic devices are used to drive incandescent or LED lamps, relays, solenoids, small dc motors, and other peripheral power loads in military and aerospace applications. Drivers with internal transient-suppression diodes are recommended for use with inductive loads.

Three minimum output-breakdown voltage ratings are available: 40 V (Series UHD-400), 70 V (Series UHD-400-1), and 100 V (Series UHD-500). All devices can sink 250 mA continuous, or 500 mA peak.

The inputs are compatible with standard TTL and CMOS logic levels. Four of eight available logic/output configurations are shown at right.

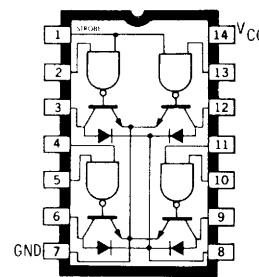
These devices are supplied in ceramic/metal side-brazed 14-pin hermetic packages. The package conforms to the dimensional requirements of MIL-M-38510 and is rated for operation over the full military temperature range of -55°C to $+125^{\circ}\text{C}$. Power and relay drivers in flat-pack packages, Series UHC-400, UHC-400-1, and UHC-500, continue to be available on special order.

Monolithic construction enables cost-effective and reliable systems design. Reverse-bias burn-in and 100% high-reliability screening to MIL-STD-883, Class B, is standard for all devices.



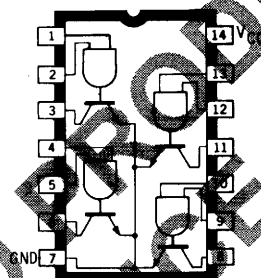
Dwg. No. A-9130B

**UHD-403
UHD-403-1
UHD-503**



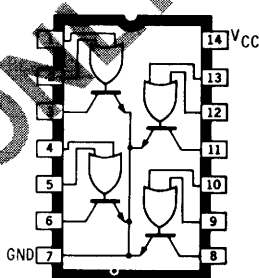
Dwg. No. A-7880B

**UHD-406
UHD-406-1
UHD-506**



Dwg. No. A-12,388

**UHD-408
UHD-408-1
UHD-508**



Dwg. No. A-12,389

**UHD-432
UHD-432-1
UHD-532**

Device Part Number Designation

Part Numbers*			Function
400	400-1	500	Quad 2-Input AND
402	402-1	502	Quad 2-Input OR
403	403-1	503	Quad OR for Inductive Loads
406	406-1	506	Quad AND for Inductive Loads
407	407-1	507	Quad NAND for Inductive Loads
408	408-1	508	Quad 2-Input NAND
432	432-1	532	Quad 2-Input NOR
433	433-1	533	Quad NOR for Inductive Loads

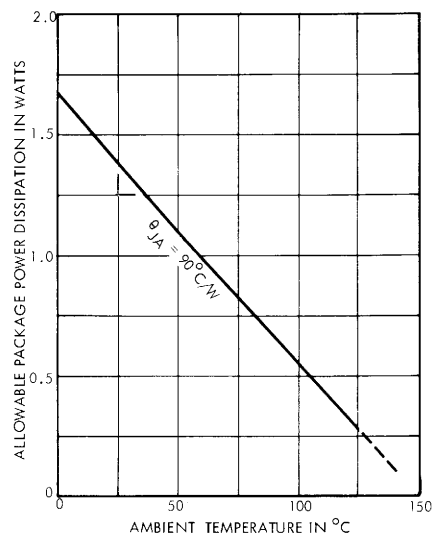
*Complete part number includes the prefix UHD.

SERIES UHD-400, UHD-400-1, AND UHD-500 POWER AND RELAY DRIVERS

ABSOLUTE MAXIMUM RATINGS

Supply Voltage, V_{CC}	7 V
Output Voltage, V_{IN}	5.5 V
Output Off-State Voltage, V_{OFF}	
Series UHD-400	40 V
Series UHD-400-1	70 V
Series UHD-500	100 V
Output On-State Sink Current, I_{ON}	
(one driver)	500 mA
(total package)	1 A
Suppression Diode Off-State Voltage, V_R	
Series UHD-400	40 V
Series UHD-400-1	70 V
Series UHD-500	100 V
Suppression Diode On-State Current, I_F	500 mA
Operating Free-Air Temperature Range, T_A	-55°C to +125°C
Storage Temperature Range, T_S	-65°C to +150°C

ALLOWABLE PACKAGE POWER DISSIPATION



Dwg. No. A-10,884B

RECOMMENDED OPERATING CONDITIONS

	Min.	Nom.	Max.	Units
Supply Voltage (V_{CC})	4.5	5.0	5.5	V
Operating Temperature Range	-55	+25	+125	°C
Current into Any Output (ON State)	—	—	250	mA

SWITCHING CHARACTERISTICS at $T_A = +25^\circ\text{C}$, $V_{CC} = 5.0\text{ V}$

Characteristic	Series	Test Conditions (Note 3)	Limits			
			Min.	Typ.	Max.	Units
Turn-On Delay Time (t_{pd0})	UHD-400	$V_S = 40\text{ V}$, $R_L = 265\Omega$ (6 W)	—	200	500	ns
	UHD-400-1	$V_S = 70\text{ V}$, $R_L = 465\Omega$ (10 W)	—	200	500	ns
	UHD-500	$V_S = 100\text{ V}$, $R_L = 670\Omega$ (15 W)	—	200	500	ns
Turn-Off Delay Time (t_{pd1})	UHD-400	$V_S = 40\text{ V}$, $R_L = 265\Omega$ (6 W)	—	300	750	ns
	UHD-400-1	$V_S = 70\text{ V}$, $R_L = 465\Omega$ (10 W)	—	300	750	ns
	UHD-500	$V_S = 100\text{ V}$, $R_L = 670\Omega$ (15 W)	—	300	750	ns

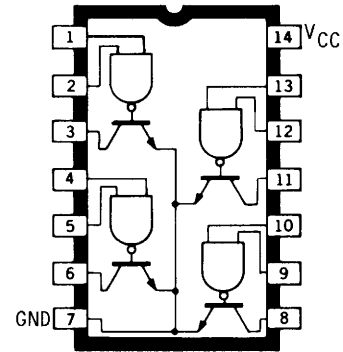
NOTES:

- Each input tested separately.
- Voltage values shown in the test-circuit waveforms are with respect to network ground terminal.
- $C_L = 15\text{ pF}$. Capacitance value specified includes probe and test fixture capacitance.

INPUT PULSE CHARACTERISTICS

$V_{in(0)} = 0\text{ V}$	$t_f \leq 7.0\text{ ns}$	$t_p = 1.0\text{ }\mu\text{s}$
$V_{in(1)} = 3.5\text{ V}$	$t_r \leq 14\text{ ns}$	PRR = 500 kHz

UHD-400, UHD-400-1, UHD-500 Quad 2-Input AND Power Drivers



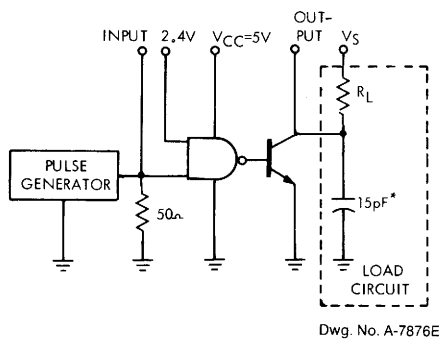
Dwg. No. A-7606

ELECTRICAL CHARACTERISTICS over operating temperature range (unless otherwise noted)

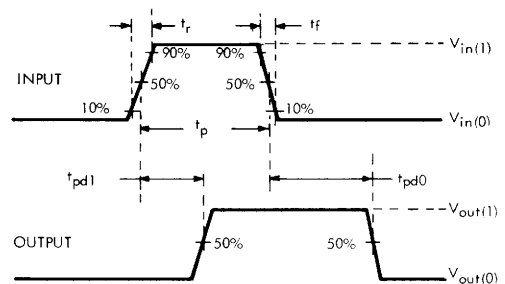
Characteristic	Symbol	Temp.	Applicable Devices	Test Conditions				Limits			
				V _{CC}	Driven Input	Other Input	Output	Min.	Typ.	Max.	Units
Output Reverse Current	I _{CEX}	—	UHD-400	4.5 V	2.0 V	2.0 V	40 V	—	—	100	μA
			UHD-400-1	4.5 V	2.0 V	2.0 V	70 V	—	—	100	μA
			UHD-500	4.5 V	2.0 V	2.0 V	100 V	—	—	100	μA
Output Voltage	V _{CE(SAT)}	-55°C to +25°C	All	4.5 V	0.8 V	4.5 V	150 mA	—	—	0.5	V
				4.5 V	0.8 V	4.5 V	250 mA	—	—	0.7	V
		+125°C	All	4.5 V	0.8 V	4.5 V	150 mA	—	—	0.6	V
				4.5 V	0.8 V	4.5 V	250 mA	—	—	0.8	V
Input Voltage	V _{IN(1)}	—	All	4.5 V	—	—	—	2.0	—	—	V
	V _{IN(0)}	—	All	4.5 V	—	—	—	—	—	0.8	V
Input Current (Note 2)	I _{IN(0)}	—	All	5.5 V	0.4 V	4.5 V	—	—	—	-800	μA
	I _{IN(1)}	—	All	5.5 V	2.4 V	0 V	—	—	—	40	μA
				5.5 V	5.5 V	0 V	—	—	—	1000	μA
Supply Current (Each Gate)	I _{CC(1)}	+25°C	All	5.5 V	5.0 V	5.0 V	—	—	4.0	7.5	mA
	I _{CC(0)}	+25°C	All	5.5 V	0 V	0 V	—	—	17.5	26.5	mA

NOTES:

1. All typical values are at V_{CC} = 5.0 V, T_A = +25°C.
2. Each input is tested separately.



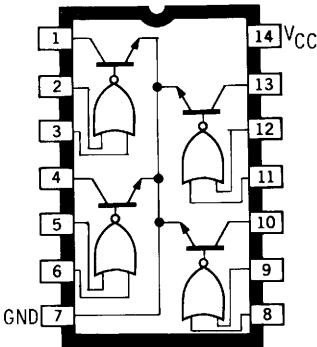
Dwg. No. A-7876E



Dwg. No. A-7628C

*Includes probe and test fixture capacitance.

UHD-402, UHD-402-1, UHD-502
Quad 2-Input OR Power Drivers

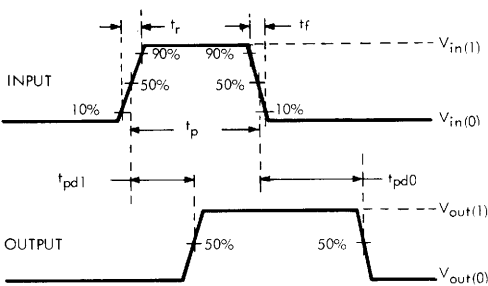
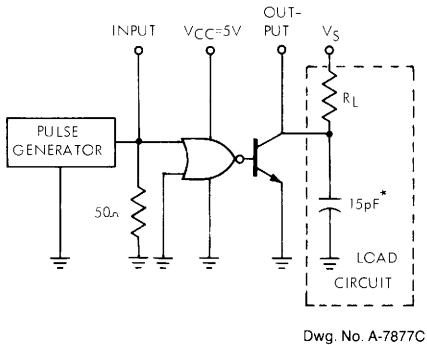


Dwg. No. A-7608

ELECTRICAL CHARACTERISTICS over operating temperature range (unless otherwise noted)

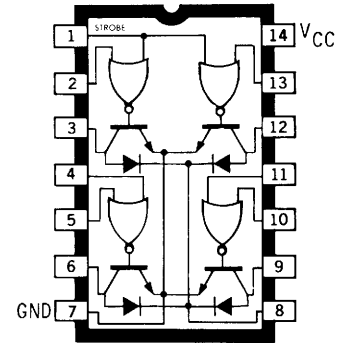
Characteristic	Symbol	Temp.	Applicable Devices	Test Conditions				Limits			
				V _{CC}	Driven Input	Other Input	Output	Min.	Typ.	Max.	Units
Output Reverse Current	I _{CEX}	—	UHD-402	4.5 V	2.0 V	0 V	40 V	—	—	100	μA
			UHD-402-1	4.5 V	2.0 V	0 V	70 V	—	—	100	μA
			UHD-502	4.5 V	2.0 V	0 V	100 V	—	—	100	μA
Output Voltage	V _{CE(SAT)}	− 55°C to + 25°C	All	4.5 V	0.8 V	0.8 V	150 mA	—	—	0.5	V
				4.5 V	0.8 V	0.8 V	250 mA	—	—	0.7	V
		+ 125°C	All	4.5 V	0.8 V	0.8 V	150 mA	—	—	0.6	V
				4.5 V	0.8 V	0.8 V	250 mA	—	—	0.8	V
Input Voltage	V _{IN(1)}	—	All	4.5 V	—	—	—	2.0	—	—	V
	V _{IN(0)}	—	All	4.5 V	—	—	—	—	—	0.8	V
Input Current (Note 2)	I _{IN(0)}	—	All	5.5 V	0.4 V	4.5 V	—	—	—	− 800	μA
	I _{IN(1)}	—	All	5.5 V	2.4 V	0 V	—	—	—	40	μA
				5.5 V	5.5 V	0 V	—	—	—	1000	μA
Supply Current (Each Gate)	I _{CC(1)}	+ 25°C	All	5.5 V	5.0 V	5.0 V	—	—	4.1	7.5	mA
	I _{CC(0)}	+ 25°C	All	5.5 V	0 V	0 V	—	—	18	26.5	mA

- NOTES:
1. All typical values are at V_{CC} = 5.0 V, T_A = + 25°C.
 2. Each input is tested separately.



*Includes probe and test fixture capacitance.

UHD-403, UHD-403-1, UHD-503 Quad OR Relay Drivers



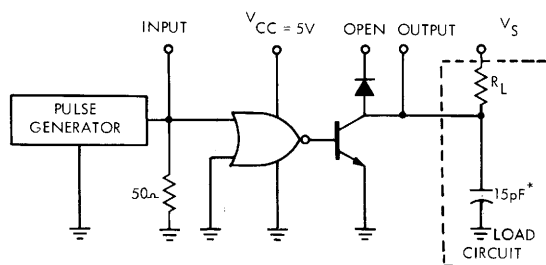
Dwg. No. A-9130B

ELECTRICAL CHARACTERISTICS over operating temperature range (unless otherwise noted)

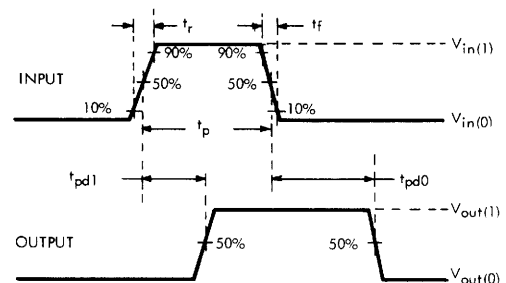
Characteristic	Symbol	Temp.	Applicable Devices	Test Conditions				Limits			
				V_{CC}	Driven Input	Other Input	Output	Min.	Typ.	Max.	Units
Output Reverse Current	I_{CEX}	—	UHD-403	4.5 V	2.0 V	0 V	40 V	—	—	100	μA
			UHD-403-1	4.5 V	2.0 V	0 V	70 V	—	—	100	μA
			UHD-503	4.5 V	2.0 V	0 V	100 V	—	—	100	μA
Output Voltage	$V_{CE(SAT)}$	-55°C to +25°C	All	4.5 V	0.8 V	0.8 V	150 mA	—	—	0.5	V
				4.5 V	0.8 V	0.8 V	250 mA	—	—	0.7	V
		+125°C	All	4.5 V	0.8 V	0.8 V	150 mA	—	—	0.6	V
				4.5 V	0.8 V	0.8 V	250 mA	—	—	0.8	V
Input Voltage	$V_{IN(1)}$	—	All	4.5 V	—	—	—	2.0	—	—	V
	$V_{IN(0)}$	—	All	4.5 V	—	—	—	—	—	0.8	V
Input Current (Note 2)	$I_{IN(0)}$	—	All	5.5 V	0.4 V	4.5 V	—	—	—	-800	μA
	$I_{IN(1)}$	—	All	5.5 V	2.4 V	0 V	—	—	—	40	μA
				5.5 V	5.5 V	0 V	—	—	—	1000	μA
Strobe Input Current	$I_{IN(0)}$	—	All	5.5 V	0.4 V	4.5 V	—	—	—	-1.6	mA
	$I_{IN(1)}$	—	All	5.5 V	2.4 V	0 V	—	—	—	100	μA
				5.5 V	5.5 V	0 V	—	—	—	1000	μA
Diode Leakage Current (Note 3)	I_R	—	All	5.0 V	0 V	0 V	Open	—	—	200	μA
Diode Forward Voltage	V_F	—	All	5.0 V	5.0 V	5.0 V	200 mA	—	1.5	1.75	V
Supply Current (Each Gate)	$I_{CC(1)}$	+25°C	All	5.5 V	5.0 V	5.0 V	—	—	6.0	7.5	mA
	$I_{CC(0)}$	+25°C	All	5.5 V	0 V	0 V	—	—	20	26.5	mA

NOTES:

1. All typical values are at $V_{CC} = 5.0 V$, $T_A = +25^\circ C$.
2. Excluding strobe input; each input is tested separately.
3. All diodes tested simultaneously at pin 8 at rated V_{OFF} .



Dwg. No. A-9123C

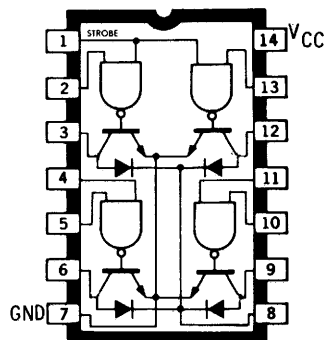


Dwg. No. A-7628C

*Includes probe and test fixture capacitance.

UHD-406, UHD-406-1, UHD-506

Quad AND Relay Drivers



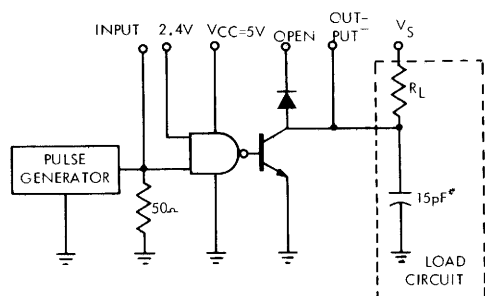
Dwg. No. A-7880B

ELECTRICAL CHARACTERISTICS over operating temperature range (unless otherwise noted)

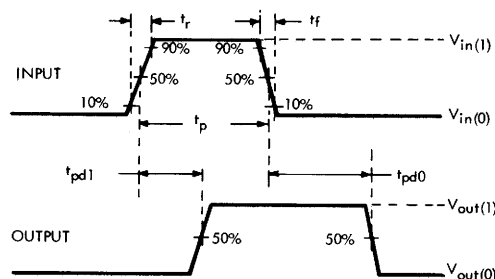
Characteristic	Symbol	Temp.	Applicable Devices	Test Conditions				Limits			
				V _{CC}	Driven Input	Other Input	Output	Min.	Typ.	Max.	Units
Output Reverse Current	I _{CEX}	—	UHD-406	4.5 V	2.0 V	2.0 V	40 V	—	—	100	μA
			UHD-406-1	4.5 V	2.0 V	2.0 V	70 V	—	—	100	μA
			UHD-506	4.5 V	2.0 V	2.0 V	100 V	—	—	100	μA
Output Voltage	V _{CE(SAT)}	−55°C to +25°C	All	4.5 V	0.8 V	4.5 V	150 mA	—	—	0.5	V
				4.5 V	0.8 V	4.5 V	250 mA	—	—	0.7	V
		+125°C	All	4.5 V	0.8 V	4.5 V	150 mA	—	—	0.6	V
				4.5 V	0.8 V	4.5 V	250 mA	—	—	0.8	V
Input Voltage	V _{IN(1)}	—	All	4.5 V	—	—	—	2.0	—	—	V
	V _{IN(0)}	—	All	4.5 V	—	—	—	—	—	0.8	V
Input Current (Note 2)	I _{IN(0)}	—	All	5.5 V	0.4 V	4.5 V	—	—	—	−800	μA
	I _{IN(1)}	—	All	5.5 V	2.4 V	0 V	—	—	—	40	μA
				5.5 V	5.5 V	0 V	—	—	—	1000	μA
Strobe Input Current	I _{IN(0)}	—	All	5.5 V	0.4 V	4.5 V	—	—	—	−1.6	mA
	I _{IN(1)}	—	All	5.5 V	2.4 V	0 V	—	—	—	100	μA
				5.5 V	5.5 V	0 V	—	—	—	1000	μA
Diode Leakage Current (Note 3)	I _R	—	All	5.0 V	0 V	0 V	Open	—	—	200	μA
Diode Forward Voltage	V _F	—	All	5.0 V	5.0 V	5.0 V	200 mA	—	1.5	1.75	V
Supply Current (Each Gate)	I _{CC(1)}	+25°C	All	5.5 V	5.0 V	5.0 V	—	—	4.0	7.5	mA
	I _{CC(0)}	+25°C	All	5.5 V	0 V	0 V	—	—	17.5	26.5	mA

NOTES:

1. All typical values are at V_{CC} = 5.0 V, T_A = +25°C.
2. Excluding strobe input; each input is tested separately.
3. All diodes tested simultaneously at pin 8 at rated V_{OFF}.



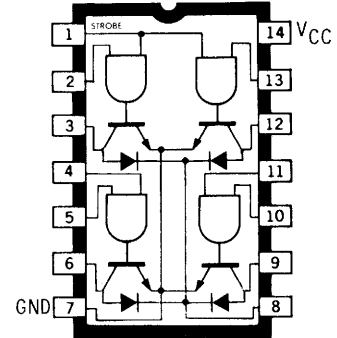
Dwg. No. A-7878C



Dwg. No. A-7628C

*Includes probe and test fixture capacitance.

UHD-407, UHD-407-1, UHD-507 Quad NAND Relay Drivers



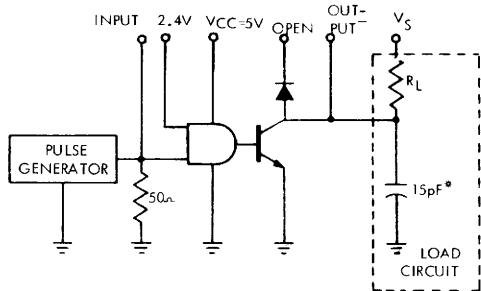
Dwg. No. A-7973B

ELECTRICAL CHARACTERISTICS over operating temperature range (unless otherwise noted)

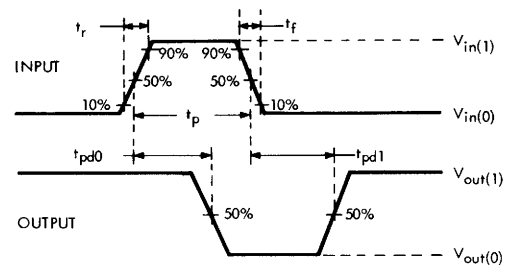
Characteristic	Symbol	Temp.	Applicable Devices	Test Conditions				Limits			
				V _{CC}	Driven Input	Other Input	Output	Min.	Typ.	Max.	Units
Output Reverse Current	I _{CEX}	—	UHD-407	4.5 V	0.8 V	4.5 V	40 V	—	—	100	μA
			UHD-407-1	4.5 V	0.8 V	4.5 V	70 V	—	—	100	μA
			UHD-507	4.5 V	0.8 V	4.5 V	100 V	—	—	100	μA
Output Voltage	V _{CE(SAT)}	−55°C to +25°C	All	4.5 V	2.0 V	2.0 V	150 mA	—	—	0.5	V
				4.5 V	2.0 V	2.0 V	250 mA	—	—	0.7	V
		+125°C	All	4.5 V	2.0 V	2.0 V	150 mA	—	—	0.6	V
				4.5 V	2.0 V	2.0 V	250 mA	—	—	0.8	V
Input Voltage	V _{IN(1)}	—	All	4.5 V	—	—	—	2.0	—	—	V
	V _{IN(0)}	—	All	4.5 V	—	—	—	—	—	0.8	V
Input Current (Note 2)	I _{IN(0)}	—	All	5.5 V	0.4 V	4.5 V	—	—	—	−800	μA
	I _{IN(1)}	—	All	5.5 V	2.4 V	0 V	—	—	—	40	μA
				5.5 V	5.5 V	0 V	—	—	—	1000	μA
Strobe Input Current	I _{IN(0)}	—	All	5.5 V	0.4 V	4.5 V	—	—	—	−1.6	mA
	I _{IN(1)}	—	All	5.5 V	2.4 V	0 V	—	—	—	100	μA
				5.5 V	5.5 V	0 V	—	—	—	1000	μA
Diode Leakage Current (Note 3)	I _R	—	All	5.0 V	5.0 V	5.0 V	Open	—	—	200	μA
Diode Forward Voltage	V _F	—	All	5.0 V	0 V	0 V	200 mA	—	1.5	1.75	V
Supply Current (Each Gate)	I _{CC(1)}	+25°C	All	5.5 V	0 V	0 V	—	—	6.0	7.5	mA
	I _{CC(0)}	+25°C	All	5.5 V	5.0 V	5.0 V	—	—	20	26.5	mA

NOTES:

1. All typical values are at V_{CC} = 5.0 V, T_A = +25°C.
2. Excluding strobe input; each input is tested separately.
3. All diodes tested simultaneously at pin 8 at rated V_{OFF}.



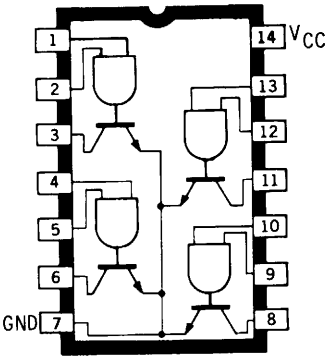
Dwg. No. A-7899C



Dwg. No. A-7900A

*Includes probe and test fixture capacitance.

UHD-408, UHD-408-1, UHD-508
Quad 2-Input NAND Power Drivers

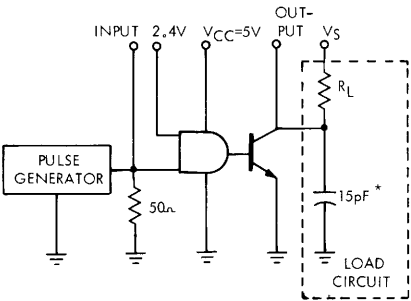


Dwg. No. 12,388

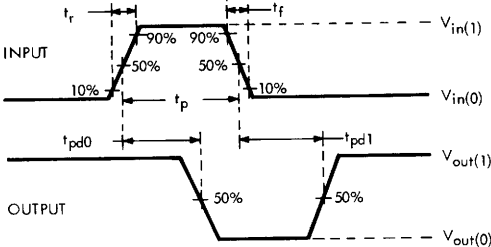
ELECTRICAL CHARACTERISTICS over operating temperature range (unless otherwise noted)

Characteristic	Symbol	Temp.	Applicable Devices	Test Conditions				Limits			
				V _{CC}	Driven Input	Other Input	Output	Min.	Typ.	Max.	Units
Output Reverse Current	I _{CEX}	—	UHD-408	4.5 V	0.8 V	4.5 V	40 V	—	—	100	μA
			UHD-408-1	4.5 V	0.8 V	4.5 V	70 V	—	—	100	μA
			UHD-508	4.5 V	0.8 V	4.5 V	100 V	—	—	100	μA
Output Voltage	V _{CE(SAT)}	− 55°C to + 25°C	All	4.5 V	2.0 V	2.0 V	150 mA	—	—	0.5	V
				4.5 V	2.0 V	2.0 V	250 mA	—	—	0.7	V
		+ 125°C	All	4.5 V	2.0 V	2.0 V	150 mA	—	—	0.6	V
				4.5 V	2.0 V	2.0 V	250 mA	—	—	0.8	V
Input Voltage	V _{IN(1)}	—	All	4.5 V	—	—	—	2.0	—	—	V
	V _{IN(0)}	—	All	4.5 V	—	—	—	—	—	0.8	V
Input Current (Note 2)	I _{IN(0)}	—	All	5.5 V	0.4 V	4.5 V	—	—	—	− 800	μA
	I _{IN(1)}	—	All	5.5 V	2.4 V	0 V	—	—	—	40	μA
				5.5 V	5.5 V	0 V	—	—	—	1000	μA
Supply Current (Each Gate)	I _{CC(1)}	+ 25°C	All	5.5 V	0 V	0 V	—	—	6.0	7.5	mA
	I _{CC(0)}	+ 25°C	All	5.5 V	5.0 V	5.0 V	—	—	20	26.5	mA

- NOTES:
1. All typical values are at V_{CC} = 5.0 V, T_A = + 25°C.
 2. Each input is tested separately.



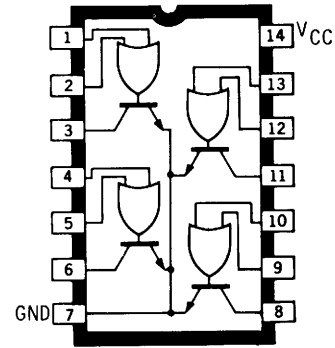
Dwg. No. A-9638A



Dwg. No. A-7900A

*Includes probe and test fixture capacitance.

UHD-432, UHD-432-1, UHD-532 Quad 2-Input NOR Power Drivers



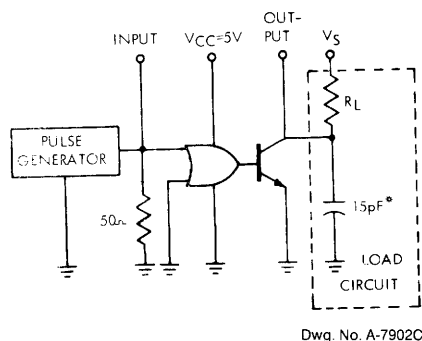
Dwg. No. A-12,389

ELECTRICAL CHARACTERISTICS over operating temperature range (unless otherwise noted)

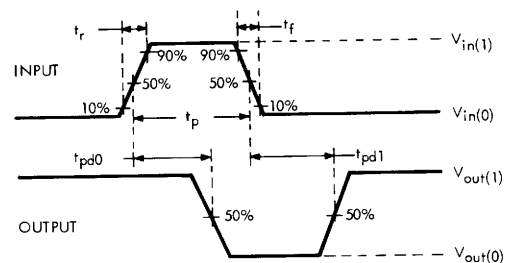
Characteristic	Symbol	Temp.	Applicable Devices	Test Conditions				Limits			
				V _{CC}	Driven Input	Other Input	Output	Min.	Typ.	Max.	Units
Output Reverse Current	I _{CEX}	—	UHD-432	4.5 V	0.8 V	0.8 V	40 V	—	—	100	μA
			UHD-432-1	4.5 V	0.8 V	0.8 V	70 V	—	—	100	μA
			UHD-532	4.5 V	0.8 V	0.8 V	100 V	—	—	100	μA
Output Voltage	V _{CE(SAT)}	− 55°C to + 25°C	All	4.5 V	2.0 V	0 V	150 mA	—	—	0.5	V
				4.5 V	2.0 V	0 V	250 mA	—	—	0.7	V
		+ 125°C	All	4.5 V	2.0 V	0 V	150 mA	—	—	0.6	V
				4.5 V	2.0 V	0 V	250 mA	—	—	0.8	V
Input Voltage	V _{IN(1)}	—	All	4.5 V	—	—	—	2.0	—	—	V
	V _{IN(0)}	—	All	4.5 V	—	—	—	—	—	0.8	V
Input Current (Note 2)	I _{IN(0)}	—	All	5.5 V	0.4 V	4.5 V	—	—	—	− 800	μA
	I _{IN(1)}	—	All	5.5 V	2.4 V	0 V	—	—	—	40	μA
				5.5 V	5.5 V	0 V	—	—	—	1000	μA
Supply Current (Each Gate)	I _{CC(1)}	+ 25°C	All	5.5 V	0 V	0 V	—	—	6.0	7.5	mA
	I _{CC(0)}	+ 25°C	All	5.5 V	5.0 V	5.0 V	—	—	20	26.5	mA

NOTES:

1. All typical values are at V_{CC} = 5.0 V, T_A = + 25°C.
2. Each input is tested separately.



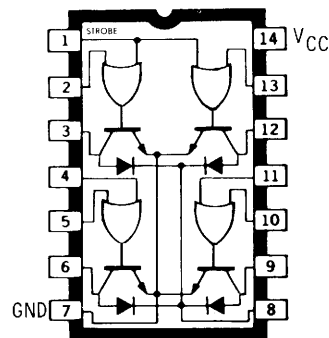
Dwg. No. A-7902C



Dwg. No. A-7900A

*Includes probe and test fixture capacitance.

UHD-433, UHD-433-1, UHD-533 Quad NOR Relay Drivers



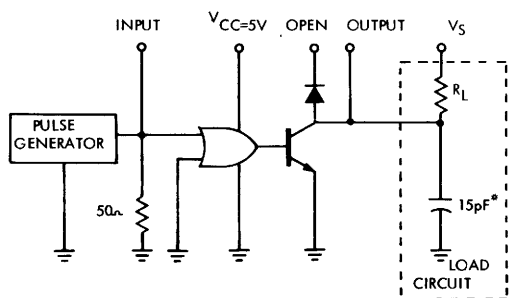
Dwg. No. A-12.390A

ELECTRICAL CHARACTERISTICS over operating temperature range (unless otherwise noted)

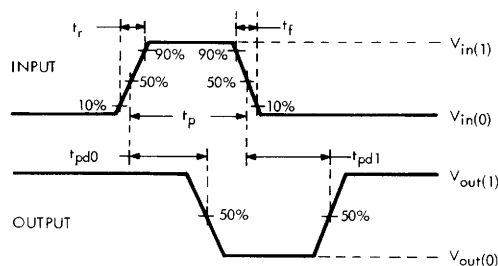
Characteristic	Symbol	Temp.	Applicable Devices	Test Conditions				Limits			
				V _{CC}	Driven Input	Other Input	Output	Min.	Typ.	Max.	Units
Output Reverse Current	I _{CEX}	—	UHD-433	4.5 V	0.8 V	0.8 V	40 V	—	—	100	μA
			UHD-433-1	4.5 V	0.8 V	0.8 V	70 V	—	—	100	μA
			UHD-533	4.5 V	0.8 V	0.8 V	100 V	—	—	100	μA
Output Voltage	V _{CE(SAT)}	-55°C to +25°C	All	4.5 V	2.0 V	0 V	150 mA	—	—	0.5	V
				4.5 V	2.0 V	0 V	250 mA	—	—	0.7	V
			All	4.5 V	2.0 V	0 V	150 mA	—	—	0.6	V
				4.5 V	2.0 V	0 V	250 mA	—	—	0.8	V
Input Voltage	V _{IN(1)}	—	All	4.5 V	—	—	—	2.0	—	—	V
	V _{IN(0)}	—	All	4.5 V	—	—	—	—	—	0.8	V
Input Current (Note 2)	I _{IN(0)}	—	All	5.5 V	0.4 V	4.5 V	—	—	—	-800	μA
	I _{IN(1)}	—	All	5.5 V	2.4 V	0 V	—	—	—	40	μA
				5.5 V	5.5 V	0 V	—	—	—	1000	μA
Strobe Input Current	I _{IN(0)}	—	All	5.5 V	0.4 V	4.5 V	—	—	—	-1.6	mA
	I _{IN(1)}	—	All	5.5 V	2.4 V	0 V	—	—	—	100	μA
				5.5 V	5.5 V	0 V	—	—	—	1000	μA
Diode Leakage Current (Note 3)	I _R	—	All	5.0 V	5.0 V	5.0 V	Open	—	—	200	μA
Diode Forward Voltage	V _F	—	All	5.0 V	0 V	0 V	200 mA	—	1.5	1.75	V
Supply Current (Each Gate)	I _{CC(1)}	+25°C	All	5.5 V	0 V	0 V	—	—	6.0	7.5	mA
	I _{CC(0)}	+25°C	All	5.5 V	5.0 V	5.0 V	—	—	20	26.5	mA

NOTES:

1. All typical values at are V_{CC} = 5.0 V, T_A = +25°C.
2. Excluding strobe input; each input is tested separately.
3. All diodes tested simultaneously at pin 8 at rated V_{OFF}.



Dwg. No. A-9135C

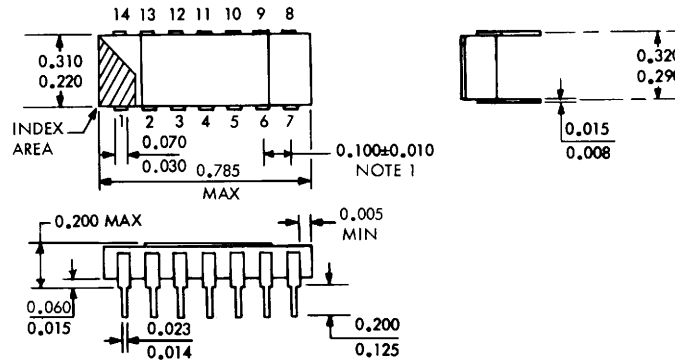


Dwg. No. A-7900A

*Includes probe and test fixture capacitance.

HERMETIC CERAMIC/METAL PACKAGE

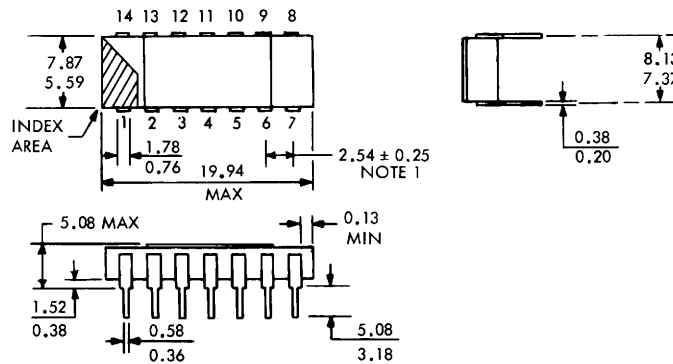
DIMENSIONS IN INCHES



Dwg. No. A-9767C IN

DIMENSIONS IN MILLIMETERS

Based on 1" = 25.4 mm



Dwg. No. A-9767C MM

This package conforms to military specification MIL-M-38510, case outline D-1, Configuration 3.

These devices are marked to indicate compliance to the latest issue of MIL-STD-883. For example: UHD400-883 or UHD433-1-883.

NOTES:

1. Lead spacing tolerance is non-cumulative.
2. Exact body and lead configuration at vendor's option within limits shown.
3. Lead gauge plane is 0.030 in. (0.76 mm) max. below seating plane.

SALES OFFICES

UNITED STATES

ALABAMA

EPI Inc.
Suite 13 — 9694 Hwy. 20 W
Madison 35758
Tel. 205/461-7000

Electramark Inc.

Suite 21
3322 South Memorial Parkway
Huntsville 35801
Tel. 205/883-9948

ARIZONA

Sprague Electric Company
Suite 209 — 1819 S. Dobson Rd.
Mesa 85202 — 5690
Tel. 602/244-0154
Tel. 602/831-6762

Sprague Electric Company

Suite 601
1150 E. Pennsylvania Street
Tucson 85714 — 1640
Tel. 602/746-0955

CALIFORNIA (Metro. L.A.)

Sprague Electric Company
Suite 150 — 3100 S. Harbor Blvd.
Santa Ana 92704
Tel. 714/549-9913

Sprague Electric Company

Suite 459
15350 Sherman Way
Van Nuys 91406
Tel. 818/994-6500

(Northern)

William J. Purdy Company
770 Airport Blvd.
Burlingame 94010 — 1927
Tel. 415/347-7701

(San Diego)

Miner Associates, Inc.
Suite 117 — 10721 Trenea Street
San Diego 92131 — 1009
Tel. 619/566-9891

COLORADO

William J. Purdy Company
5570 E. Yale Ave.
Denver 80222 — 6907
Tel. 303/753-6800

Todd & Fry Associates

P.O. Box 1689
Longmont 80502 — 1689
Tel. 303/776-7331

CONNECTICUT

Sprague Electric Company
88 Main Street South
Southbury 06488
Tel. 203/264-9595

Sprague Electric Company

120 Hartford Turnpike South
P.O. Box 578
Wallingford 06492 — 0578
Tel. 203/284-8300

Data Mark Inc.

Unit 7C-2514 Boston Post Road
Guilford 06437
Tel. 203/453-0575

DIST. OF COLUMBIA

Sprague Electric Company
Suite 311
14333 Laurel-Bowie Road
Laurel, MD 20708 — 1130
Tel. 301/953-1717

Trinkle Sales Inc.

P.O. Box 5320
Cherry Hill, NJ 08034 — 0460
Tel. 609/795-4200

FLORIDA

Sprague Electric Company
P.O. Box 1410
Altamonte Springs 32715 — 1410
Tel. 305/831-3636

Sprague Electric Company

Suite 419 — 1500 N.W. 62nd Street
Ft. Lauderdale 33309 — 1802
Tel. 305/491-7411

Sprague Electric Company

Suite T, Building 501
8001 North Dale Mabry
Tampa 33614 — 3265
Tel. 813/935-8203

GEORGIA

Electramark Inc.
6030 — I Unity Drive
Norcross 30071 — 3583
Tel. 404/446-7915

Electronic Marketing Associates

Suite 101
6695 Peachtree Industrial Blvd.
Atlanta 30360 — 2116
Tel. 404/448-1215

ILLINOIS (Northern)

D. Dolin Sales

609 Academy Drive
Northbrook 60062
Tel. 312/249-6770

(Southern)

EPI Inc.
Suite 201 — 103 W. Lockwood
St. Louis, MO 63119 — 2915
Tel. 314/962-1411

INDIANA

Sprague Electric Company
Suite 290 — 8200 Haverstick Road
Indianapolis 46240
Tel. 317/253-4247

IOWA

J. R. Sales Engineering, Inc.
1930 St. Andrews, N. E.
Cedar Rapids 52402
Tel. 319/393-2232

KANSAS

EPI Inc.
9016 West 83rd Street
Overland Park 66204
Tel. 913/341-2024

KENTUCKY

Sprague Electric Company
821 Corporate Drive
Unit #16, Suite 200
Lexington 40503
Tel. 606/224-4230

MARYLAND

Sprague Electric Company
Suite 311
14333 Laurel-Bowie Road
Laurel 20708 — 1130
Tel. 301/792-4890

Trinkle Sales Inc.

P.O. Box 5320
Cherry Hill, NJ 08034 — 0460
Tel. 609/795-4200

MASSACHUSETTS

New England Technical Sales Corp.
101 Cambridge Street
Burlington 01803
Tel. 617/272-0434

MICHIGAN

Sprague Electric Company
Suite 301 — 2155 Jackson Road
Ann Arbor 48103 — 3917
Tel. 313/761-2014

MINNESOTA

HMR, Inc.
9065 Lyndale Ave. South
Minneapolis 55420 — 3520
Tel. 612/888-2122

MISSISSIPPI

EPI Inc.
Suite 13 — 9694 Hwy. 20 W
Madison, AL 35758
Tel. 205/461-7000

MISSOURI

EPI Inc.
Suite 201 — 103 W. Lockwood
St. Louis 63119 — 2915
Tel. 314/962-1411

NEBRASKA

J. R. Sales Engineering, Inc.
1930 St. Andrews, N. E.
Cedar Rapids, Iowa 52402
Tel. 319/393-2232

NEW HAMPSHIRE

New England Technical Sales Corp.
101 Cambridge Street
Burlington, MA 01803
Tel. 617/272-0434

NEW JERSEY (Northern)

Sprague Electric Company
P.O. Box 1612
Wayne 07470 — 0701
Tel. 201/696-8200

(Southern)

Trinkle Sales Inc.
P.O. Box 5320
Cherry Hill 08034 — 0460
Tel. 609/795-4200

NEW MEXICO

William J. Purdy Company
120 LaVeta Drive NE
Albuquerque 87108 — 1613
Tel. 505/266-7959

NEW YORK (Downstate)

Sprague Electric Company
2001 Palmer Ave.
Larchmont 10538 — 2420
Tel. 914/834-4439

(Long Island)

Sprague Electric Company
P.O. Box 541
Central Islip 11722 — 0541
Tel. 516/234-8700

(Upstate)

Sprague Electric Company
2002 Teall Ave.
Syracuse 13206 — 1542
Tel. 315/437-7311

Paston-Hunter Co., Inc.

2002 Teall Ave.
Syracuse 13206 — 1596
Tel. 315/437-2843

NORTH CAROLINA

Sprague Electric Company
9741-M Southern Pine Blvd.
Charlotte 28210 — 5560
Tel. 704/527-1306

Electronic Marketing Associates

9225 Honeycutt Creek Rd.
Raleigh 27609 — 1523
Tel. 919/847-8800

OHIO

Sprague Electric Company
Suite 330 — 555 Metro Place North
Dublin 43017 — 1375
Tel. 614/761-1881

OREGON

Sprague Electric Company
Suite L
16209 S.E. McGillivray Boulevard
Vancouver, WA 98664 — 9025
Tel. 503/225-0493
Tel. 206/892-0361

William J. Purdy Company

7799 Southwest Cirrus Drive
Beaverton 97005 — 5945
Tel. 503/641-9373

PENNSYLVANIA

Trinkle Sales Inc.
P.O. Box 5320
Cherry Hill, NJ 08034 — 0460
Tel. Phila. 215/922-2080

SOUTH CAROLINA

Electronic Marketing Associates
210 W. Stone Ave.
Greenville 29609 — 5499
Tel. 803/233-4637

TENNESSEE (Eastern)

Electronic Marketing Associates
9225 Honeycutt Creek Road
Raleigh, NC 27609 — 1523
Tel. 919/847-8800

(Western)

EPI Inc.
Suite 13 — 9694 Hwy. 20 W
Madison, AL 35758
Tel. 205/461-7000

TEXAS

Sprague Electric Company

Suite 220
9319 LBJ Freeway
Dallas 75243 — 3403
Tel. 214/235-1256

Sprague Electric Company

Suite 350W — 1106 Clayton Lane
Austin 78723 — 1033
Tel. 512/458-2514

UTAH

William J. Purdy Company
5570 E. Yale Avenue
Denver, CO 80222 — 6907
Tel. 303/753-6800

VIRGINIA

Sprague Electric Company
1 East Preston St.
Lexington 24450 — 2324
Tel. 703/463-9161

Sprague Electric Company

Suite 311
14333 Laurel-Bowie Road
Laurel, MD 20708 — 1130
Tel. 301/953-1717

Trinkle Sales Inc.

P.O. Box 5320
Cherry Hill, NJ 08034 — 0460
Tel. 609/795-4200

WASHINGTON

Sprague Electric Company

Lake Union Place
Suite 301
1914 North 34th Street
Seattle 98103
Tel. 206/632-7761

Sprague Electric Company

Suite L
16209 S.E. McGillivray Blvd.
Vancouver 98664
Tel. 206/892-0361
Tel. 503/225-0493
William J. Purdy Company
4082-148th Ave. N.E.
Redmond 98052 — 5165
Tel. 206/882-3144

WISCONSIN

D. Dolin Sales
131 West Layton Ave.
Milwaukee 53207 — 5991
Tel. 414/482-1111

PUERTO RICO

Electronic Sales Associates
Calle 203 GO-11
Country Club 3rd Ext.
Rio Piedras
Tel. 809/762-6549

CANADA

Sprague Electric of Canada, Ltd.
Suite 220
2375 Steeles Avenue, W.
Downsview, Ontario M3J 3A8
Tel. 416/665-6066

CANADA (continued)

Sprague Electric of Canada, Ltd.
301 Moodie Drive
Suite 300
Nepean, Ontario K2H 9C4
Tel. 613/726-0696

Birde Marketing, Inc.

Unit 1
111 Esna Park Drive
Markham, Ont. L3R1H2
Tel. 416/477-7722

EUROPE

Sprague World Trade Corp.

18 Avenue Louis Casai
1209-Geneva
Switzerland
Tel. 98-4021
TLX 845-23469

Sprague Benelux

Excelsiorlaan 21
Bus 3
1930 Zaventem
Belgium
Tel. 02/721.48.60
TLX 62897

Sprague Electric (U.K.) Ltd.

Airtech No. 2
Fleming Way
Crawley West Sussex RH 102 YQ
England
Tel. 011-44-293-51-78-78
TLX 877813

Sprague France S.A.R.L.

3 Rue Camille Desmoulins
94230 Cachan
France
Tel. (1) 45-47-66-00
TLX 250697

Sprague Elektronik GMBH

Hainerweg 48
D-6000 Frankfurt 70
West Germany
Tel. 069-60551
TLX 414008

Sprague Italiana S.p.A.

Via G. DeCastro 4
20144 Milano
Italy
Tel. 02-498-7891
TLX 332321

Sprague Scandinavia AB

Box 802
S-191 28 Sollentuna
Sweden
Tel. (04.) 08-9205 95
TLX 854 15239

FAR EAST

Sprague World Trade Corp.

Eastern Branch
G.P.O. Box 4289
Hong Kong
Tel. 0-283188
TLX 43395

Sprague Japan K.K.

Shinjuku KB Bldg.
11-3, Nishi-Shinjuku 6-Chome
Shinjuku-ku, Tokyo 160
Japan
Tel. (03) 348-5221
TLX J23328

Tecnomic Ltd.

Sprague Korea Branch
4th Fl., Daiyoung Bldg.,
44-1, Yoido-Dong
Youngdungpo-Ku, Seoul, Korea
Tel. (2) 783-9784
TLX 78726186

Sprague World Trade Corp.

Singapore Office
11th Floor, 450/452 Incheape House
Alexandra Road
Singapore 0511
Tel. 475-1826
TLX RS 26384

Sprague Taiwan Branch/

Tecnomic Ltd.
8/F, 142, Sec. 4
Chung Hsiao East Road
Taipei, Taiwan, R.O.C.
Tel. 771-9582
TLX 21422

In the construction of the components described, the full intent of the specification will be met. The Sprague Electric Company, however, reserves the right to make, from time to time, such departures from the detail specifications as may be required to permit improvements in the design of its products. Components made under military approvals will be in accordance with the approval requirements.

The information included herein is believed to be accurate and reliable. However, the Sprague Electric Company assumes no responsibility for its use; nor for any infringements of patents or other rights of third parties which may result from its use.

8203

8455