

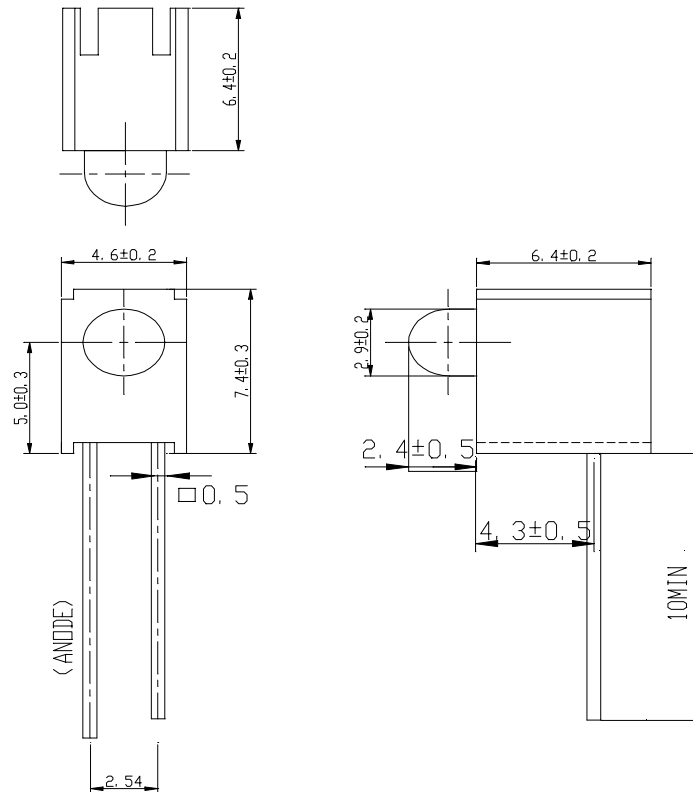


# EVERLIGHT ELECTRONICS CO.,LTD.

Device Number : DAE-026-498 REV: 1.0

PART NO. : A264B/H/T2/R ECN :          Page: 1/5

## ■ Package Dimensions:



## ■ Notes:

- 1.All dimensions are in millimeters, tolerance is 0.25mm except being specified
- 2.Lead spacing is measured where the lead emerges from the package

LED PART NO	Chip		Lens Color
	Material	Emitted Color	
264HD/T2	GaP	Bright Red	Red Diffused



Device Number : DAE-026-498 REV: 1.0

PART NO. : A264B/H/T2/R ECN :          Page: 2/5

## ■ Descriptions:

- 1.ARRAY=Plastic Holder+Combination of Lamps
- 2.The array will easily mount the applicable lamps on any panel

## ■ Features:

- 1.Low power consumption
- 2.High efficiency and low cost
- 3.Good control and free combinations on the colors of LED lamps
- 5.Good lock and easy to assembly
- 6.Stackable and easy to assembly
- 7.Stackable vertically and easy to assembly
- 8.Versatile mounting on PCB or panel
- 9.Stackable horizontally and easy to assembly

## ■ Applications:

- 1.Used as indicators of indicating the degrees, functions, positions etc, in electronic instruments.

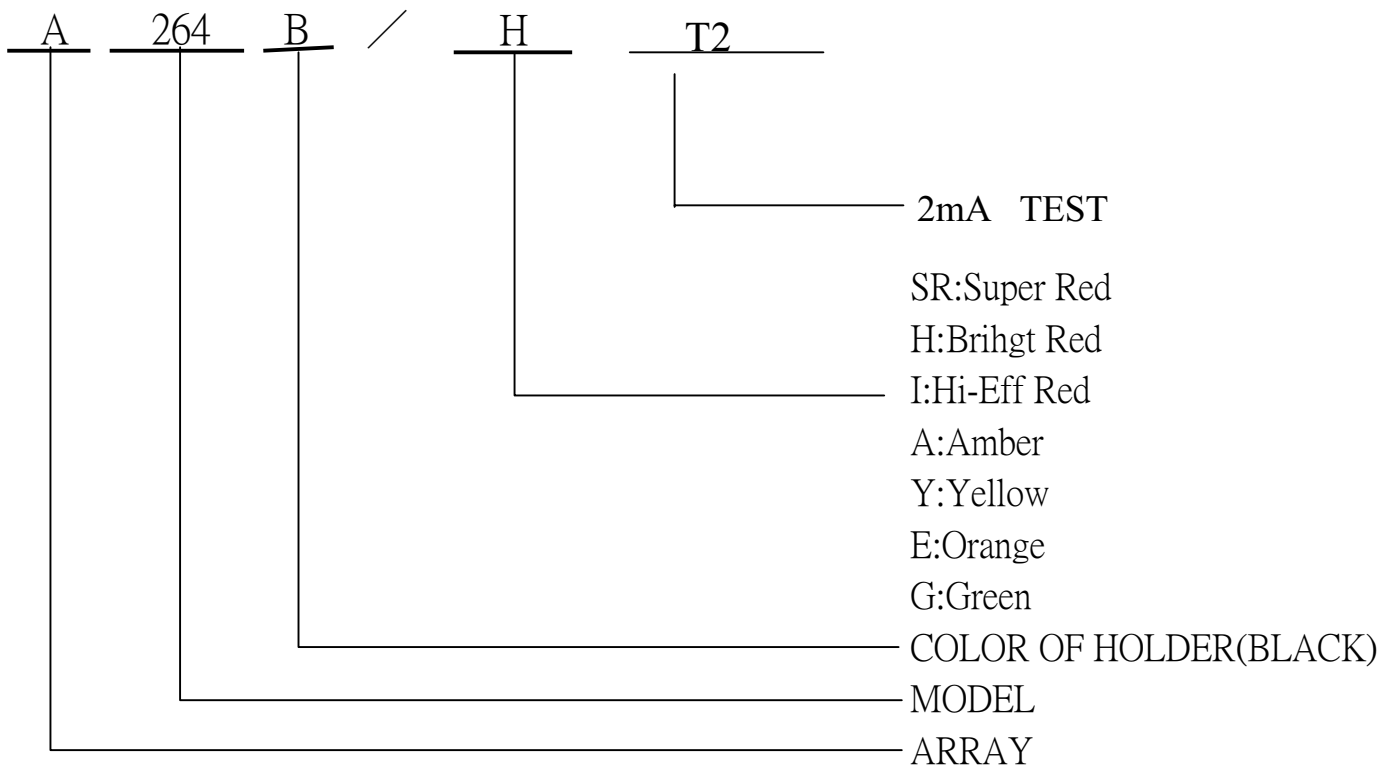


# EVERLIGHT ELECTRONICS CO.,LTD.

Device Number : DAE-026-498 REV: 1.0

PART NO. : A264B/H/T2/R ECN :          Page: 3/5

## ■ LED LAMP ARRAYS SELECTION GUIDE:







# EVERLIGHT ELECTRONICS CO.,LTD.

Device Number : DAE-026-498 REV: 1.0

PART NO. : A264B/H/T2/R ECN :            Page: 4/5

## ■ Absolute Maximum Ratings at Ta = 25°C

Parameter	Symbol	Rating	Unit
Forward Current	IF	15	mA
Operating Temperature	Topr	-40 to +85	°C
Storage Temperature	Tstg	-40 to +100	°C
Soldering Temperature	Tsol	260 ± 5	°C
Power Dissipation	Pd	45	mW
Peak Forward Current(Duty 1/10 @ 1KHz)	IF(Peak)	50	mA
Reverse Voltage	VR	5	V

## ■ Electronic Optical Characteristics :

Parameter	Symbol	Min.	Typ.	Max.	Unit	Condition
Luminous Intensity	Iv	1.0	1.6	/	mcd	IF= 2 mA
Viewing Angle	2θ 1/2	/	40	/	deg	IF= 20 mA
Peak Wavelength	λ p	/	697	/	nm	IF= 20 mA
Dominant Wavelength	λ d	/	650	/	nm	IF= 20 mA
Spectrum Radiation Bandwidth	△ λ	/	90	/	nm	IF= 20 mA
Forward Voltage	VF	1.5	1.8	2.2	V	IF= 2 mA
Reverse Current	IR	/	/	10	μ A	VR= 5 V



EVERLIGHT ELECTRONICS CO.,LTD.

Device Number : DAE-026-498 REV: 1.0

PART NO. : A264B/H/T2/R ECN :                      Page: 5/5

## ■ Typical Electro-Optical Characteristic Curves

