



EVERLIGHT ELECTRONICS CO.,LTD.

Device Number : DDF-512-044 REV: 1.0

0.56" Quadruple Digit Displays

MODEL NO : ELF-512GWB ECN : Page: 1/5

■ Features :

- Industrial standard size.
- Low power consumption.
- Categorized for luminous intensity.

■ Applications:

- Audio equipment
- Instrument panels
- Digital read out display

■ Description :

- The ELF-512 series is a large 14.22mm
(0.56")high seven segment display
design for viewing distances up to
7 meters.
- These displays provide excellent
reliability in bright ambient light.
- These device is made with white
segments and black surface.

PART NO	CHIP		C.C. or C.A.
	Material	Emitted Color	
ELF-512GWB	GaP	Green	C.A.

OFFICE : NO. 25,Lane 76,Sec.3, Chung Yang Rd., Tucheng 236, Taipei, Taiwan, R.O.C.

TEL : 886-2-2267-2000,2267-9936

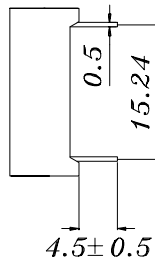
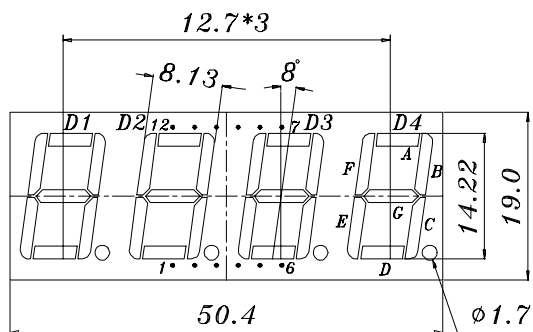
FAX : 886-2-2267-6244,22676189,22676306

<http://www.everlight.com>

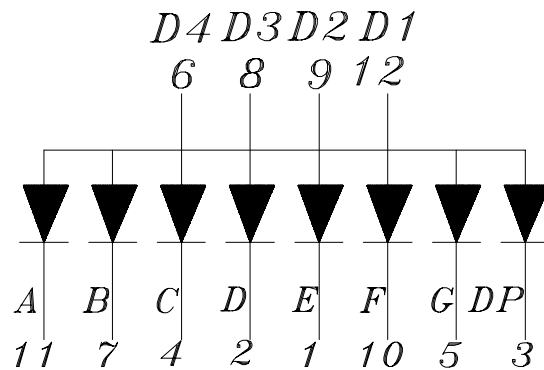
0.56" Quadruple Digit Displays

MODEL NO : ELF-512GWB ECN : Page: 2/5

Package Dimensions:



- COMMON ANODE**
1. CATHODE E
 2. CATHODE D
 3. CATHODE DP
 4. CATHODE C
 5. CATHODE G
 6. COMMON ANODE D4
 7. CATHODE B
 8. COMMON ANODE D3
 9. COMMON ANODE D2
 10. CATHODE F
 11. CATHODE A
 12. COMMON ANODE D1



NOTES:

1. All dimensions are in millimeters , tolerance is 0.25mm unless otherwise noted.
 2. Above specification may be changed without notice.
- Supplier will reserve authority on material change for above specification.



Device Number : DDF-512-044 REV: 1.0

0.56" Quadruple Digit Displays

MODEL NO : ELF-512GWB ECN : Page: 3/5

■ Absolute maximum ratings at Ta = 25°C :

Parameter	Symbol	Rating	Unit
Reverse Voltage	Vr	5	V
Forward Current	If	30	mA
Operating Temperature	Topr	-40 to +85	°C
Storage Temperature	Tstg	-40 to +100	°C
Soldering Temperature	Tsol	260 ± 5	°C
Power Dissipation	Pd	100	mW
Peak Forward Current(Duty 1/10 @ 1KHZ)	If(Peak)	160	mA

■ Electronic optical characteristics :

Parameter		Symbol	MIN.	TYP.	MAX.	Unit	Condition
Luminous Intensity	Per segment	Iv	1.4	3.0	----	mcd	If=10mA
	Per decimal point		0.28	1.05	----	mcd	If=10mA
Peak Wavelength		λ p	----	565	----	nm	If=20mA
Dominant Wavelength		λ d	----	570	----	nm	If=20mA
Spectrum Radiation Bandwidth		△ λ	----	30	----	nm	If=20mA
Forward Voltage		Vf	1.7	2.1	2.4	V	If=20mA
Reverse Current		Ir	----	----	10	μ A	Vr=5V



EVERLIGHT ELECTRONICS CO.,LTD.

Device Number : DDF-512-044 REV: 1.0

0.56" Quadruple Digit Displays

MODEL NO : ELF-512GWB ECN : Page: 4/5

■ Reliability test item and condition:

NO	Item	Test Conditions	Test Hours/Cycle	Sample Size	Ac/Re
1	Solder Heat	TEMP : 260℃ ± 5 ℃	5 SEC	76 PCS	0/1
2	Temperature Cycle	H : +85℃ 30min └ 5 min L : -55℃ 30min	50 CYCLE	76 PCS	0/1
3	Thermal Shock	H : +100℃ 5min └ 10 sec L : -10℃ 5min	50 CYCLE	76 PCS	0/1
4	High Temperature Storage	TEMP : 100℃	1000 HRS	76 PCS	0/1
5	Low Temperature Storage	TEMP : -55℃	1000 HRS	76 PCS	0/1
6	DC Operating Life	If = 10 mA	1000 HRS	76 PCS	0/1
7	High Temperature / High Humidity	85℃/85% RH	1000 HRS	76 PCS	0/1

--



EVERLIGHT ELECTRONICS CO.,LTD.

Device Number : DDF-512-044 REV: 1.0

0.56" Quadruple Digit Displays

MODEL NO: ELF-512GWB ECN : Page: 5/5

■ Typical Electro-Optical Characteristic Curves:

G

