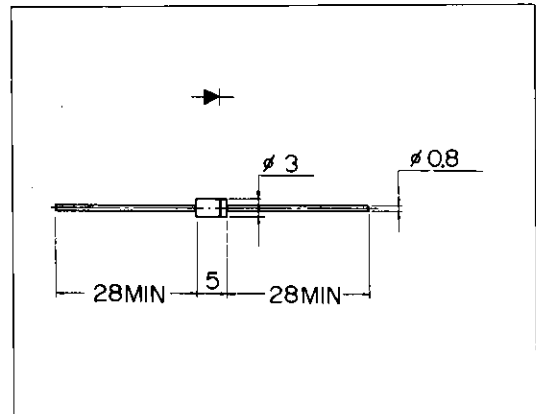


## 高速整流ダイオード

### FAST RECOVERY DIODE

## ■外形寸法：Outline Drawings



A

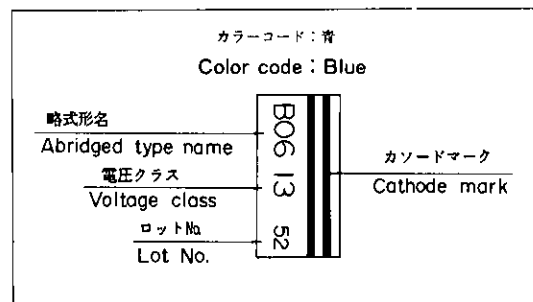
## ■特長：Features

- カラーTVダンパー用に最適  
Most suitable for color T.V. damper.
- メサ形のため耐圧が高い  
High voltage by mesa design.
- 高信頼性  
High reliability

## ■用途：Applications

- 高速スイッチング  
High speed switching.

## ■表示：Marking



## ■定格と特性：Maximum Ratings and Characteristics

### ●絶対最大定格：Absolute Maximum Ratings

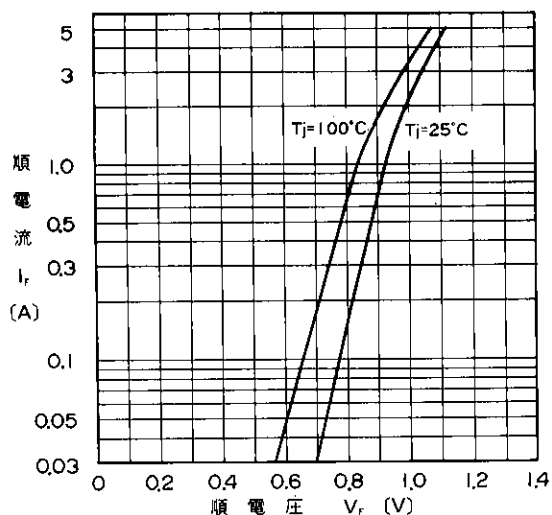
| Items   | Symbols     | Conditions                                      | Ratings         |      | Units            |
|---|-------------|---|-----------------|------|------------------|
|   |             |   | -13             | -15  |                  |
| ピーク繰り返し逆電圧<br>Repetitive Peak Reverse Voltage | $V_{RRM}$   |   | 1300            | 1500 | V                |
| 平均順電流<br>Average Forward Current              | $I_{F(AV)}$ | 抵抗負荷 Resistive load<br>$T_a = 40^\circ\text{C}$ | 1.0             |      | A                |
| サージ電流<br>Surge Current                        | $I_{FSM}$   | 正弦波 Sine wave<br>10ms                           | 50              |      | A                |
| 接合温度<br>Operating Junction Temperature        | $T_j$       |   | $-40 \sim +150$ |      | $^\circ\text{C}$ |
| 保存温度<br>Storage Temperature                   | $T_{stg}$   |   | $-40 \sim +150$ |      | $^\circ\text{C}$ |

### ●電気的特性(特に指定がない限り周囲温度 $T_a = 25^\circ\text{C}$ とする)

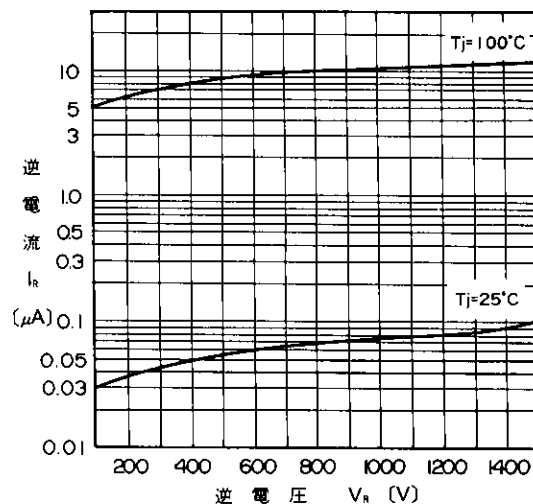
Electrical Characteristics ( $T_a = 25^\circ\text{C}$  Unless otherwise specified)

| Items                          | Symbols   | Conditions                                | Max. | Units         |
|--------------------------------|-----------|---|------|---------------|
| 順電圧<br>Forward Voltage Drop    | $V_{FM}$  | $I_{FM} = 4\text{A}$                      | 1.5  | V             |
| 逆電流<br>Reverse Current         | $I_{RRM}$ | $V_R = V_{RRM}$                           | 10   | $\mu\text{A}$ |
| 逆回復時間<br>Reverse Recovery Time | $t_{rr}$  | $I_F = 0.1\text{A}$ , $I_R = 0.1\text{A}$ | 4    | $\mu\text{s}$ |

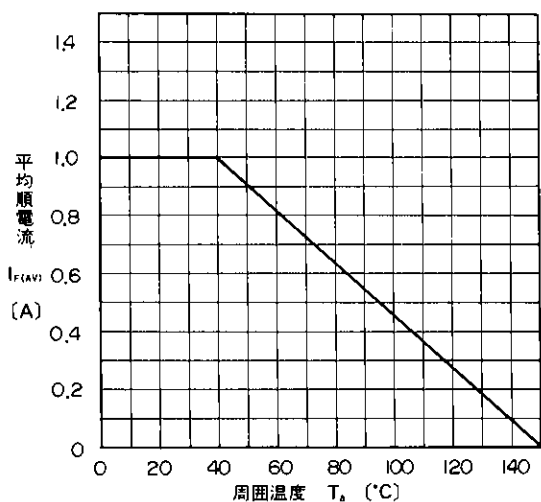
■特性曲線：Characteristics



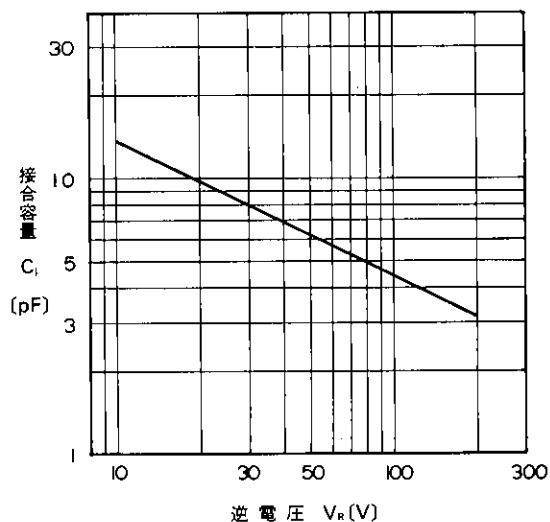
順特性 (代表特性)  
Forward Characteristics



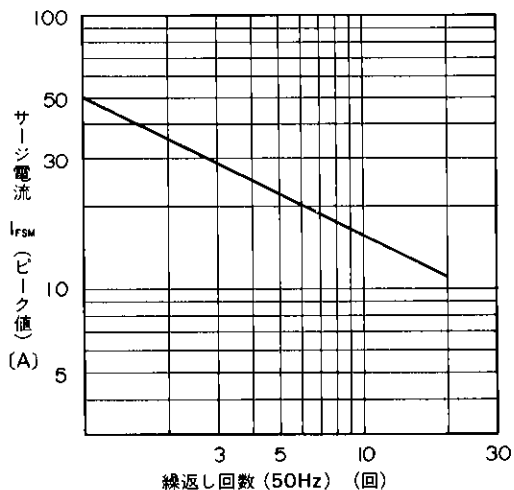
逆特性 (代表特性)  
Reverse Characteristics



平均順電流—周囲温度特性  
Current Derating ( $I_{F(AV)}-T_a$ )



接合容量特性 (代表特性)  
Junction Capacitance Characteristics



サージ電流耐量  
Surge Capability

For more information, contact:

**Collmer Semiconductor, Inc.**

P.O. Box 702708

Dallas, TX 75370

972-233-1589

972-233-0481 Fax

<http://www.collmer.com>