

| | | | |
|---------------------------|---------------------------|-------------------------------|--------------|
| Customer Name | Standard specification | FUJITSU MEDIA DEVICES LIMITED | |
| Application | IF Filter for TV(PIF+SIF) | | |
| System | M/N | | |
| Picture Carrier Frequency | 58.75 MHz | DATE | Jun. 27 2003 |
| FMD Part Number | F811CPL | Version 1.3 | |

Table 1-1 Electrical Specification (Ta=25°C)

| Video Channel | | | | | | |
|-------------------------|---------------------|---------------|------|------|--------|-----------|
| Items | Conditions | Specification | | | Unit | Remarks |
| | | Min. | Typ. | Max. | | |
| Insertion Loss | fp-1.75 (57.08 MHz) | 13.5 | 15.0 | 16.5 | dB | |
| Relative level | fp-6.0 (52.83 MHz) | — | -49 | -42 | dB | |
| | fp-4.5 (54.33 MHz) | — | -25 | -18 | dB | |
| | fp-3.58 (55.25 MHz) | -1.9 | -0.9 | 0.1 | dB | |
| | fp-1.75 (57.08 MHz) | — | 0 | — | dB | Reference |
| | fp (58.83 MHz) | -6.2 | -5.2 | -4.2 | dB | |
| | fp+1.5 (60.33 MHz) | — | -52 | -42 | dB | |
| | 45.08 ~ 52.83 MHz | — | -38 | -30 | dB | |
| | 60.33 ~ 65.08 MHz | — | -42 | -30 | dB | |
| | | | | | | |
| Group delay | fp-3.58 (55.25 MHz) | — | 113 | — | ns | |
| | fp-3.0 (55.83 MHz) | — | 88 | — | ns | |
| | fp-2.0 (56.83 MHz) | — | 47 | — | ns | |
| | fp-1.0 (57.83 MHz) | — | 42 | — | ns | |
| | fp (58.83 MHz) | — | 0 | — | ns | Reference |
| Input Capacitance | Cin (1.0 MHz) | — | 20.2 | — | pF | |
| Output Capacitance | Cout(V) (1.0 MHz) | — | 3.5 | — | pF | |
| Temperature coefficient | | — | -72 | — | ppm/°C | |

| | | | |
|---------------------------|-------------------------------|-------------------------------|--------------|
| Customer Name | Standard specification | FUJITSU MEDIA DEVICES LIMITED | |
| Application | IF Filter for TV(PIF+SIF) | | |
| System | M/N | | |
| Picture Carrier Frequency | 58.75 MHz | DATE | Jun. 27 2003 |
| FMD Part Number | F811CPL | Version 1.3 | |

Table 1-2 Electrical Specification (Ta=25°C)

| Sound Channel | | | | | | |
|-------------------------|---------------------|---------------|------|------|--------|-----------|
| Items | Conditions | Specification | | | Unit | Remarks |
| | | Min. | Typ. | Max. | | |
| Insertion Loss | fp-4.5 (54.33 MHz) | 12.5 | 14.5 | 16.5 | dB | |
| Relative level | fp-6.0 (52.83 MHz) | — | -30 | -25 | dB | |
| | fp-4.5 (54.33 MHz) | — | 0 | — | dB | Reference |
| | fp-3.58 (55.25 MHz) | — | -18 | -12 | dB | |
| | fp (58.83 MHz) | — | -39 | -30 | dB | |
| | fp+1.5 (60.33 MHz) | — | -37 | -30 | dB | |
| | 45.08 ~ 52.83 MHz | — | -29 | -25 | dB | |
| | 60.33 ~ 65.08 MHz | — | -32 | -27 | dB | |
| Input Capacitance | Cin (1.0 MHz) | — | 20.2 | — | pF | |
| Output Capacitance | Cout(s) (1.0 MHz) | — | 4.4 | — | pF | |
| Temperature coefficient | | — | -72 | — | ppm/°C | |

| | | | |
|---------------------------|---------------------------|-------------------------------|--------------|
| Customer Name | Standard specification | FUJITSU MEDIA DEVICES LIMITED | |
| Application | IF Filter for TV(PIF+SIF) | | |
| System | M/N | | |
| Picture Carrier Frequency | 58.75 MHz | DATE | Jun. 27 2003 |
| FMD Part Number | F811CPL | Version 1.3 | |

● Dimensions

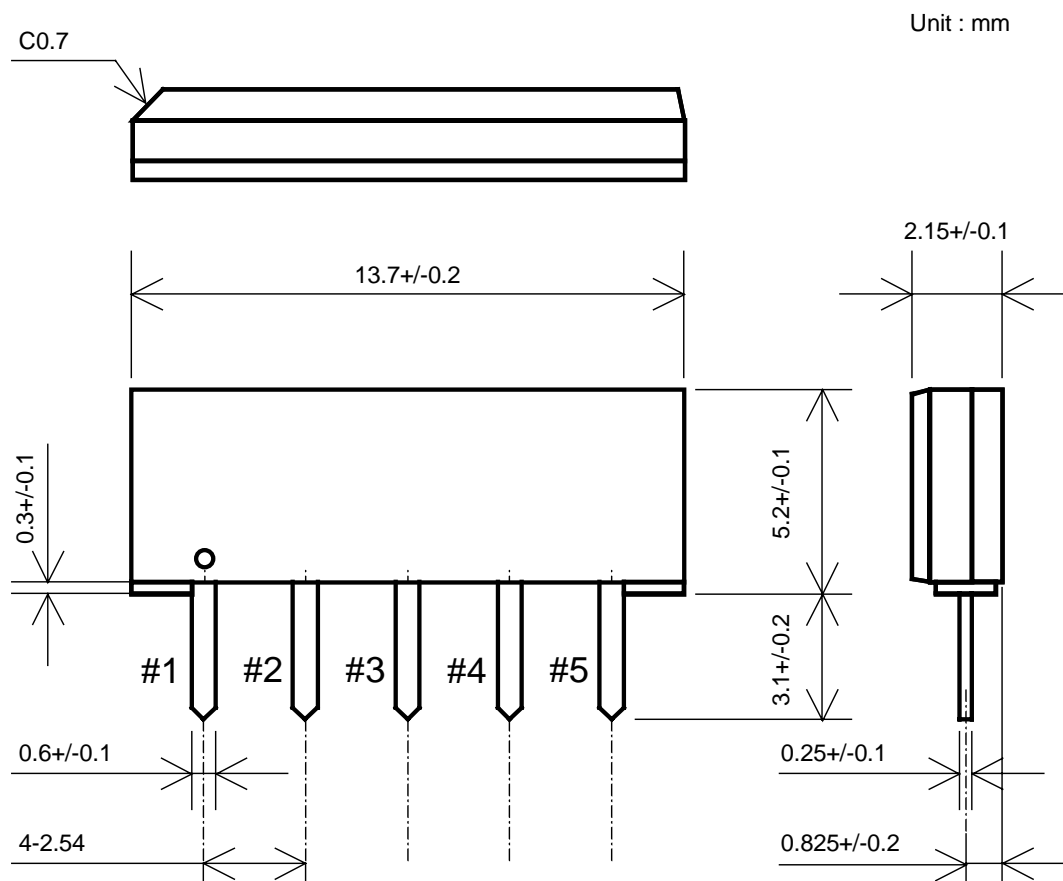


Fig.1

● Pin Configuration

Table 2

| Pin No. | Symbol | Function |
|---------|--------|---------------|
| #1 | IN | Input |
| #2 | GND | Ground |
| #3 | OUT(S) | Output(Sound) |
| #4 | OUT(V) | Output(Video) |
| #5 | OUT(V) | Output(Video) |

| | | | |
|---------------------------|-------------------------------|-------------------------------|--------------|
| Customer Name | Standard specification | FUJITSU MEDIA DEVICES LIMITED | |
| Application | IF Filter for TV(PIF+SIF) | | |
| System | M/N | | |
| Picture Carrier Frequency | 58.75 MHz | DATE | Jun. 27 2003 |
| FMD Part Number | F811CPL | Version 1.3 | |

- **Evaluation Circuit**

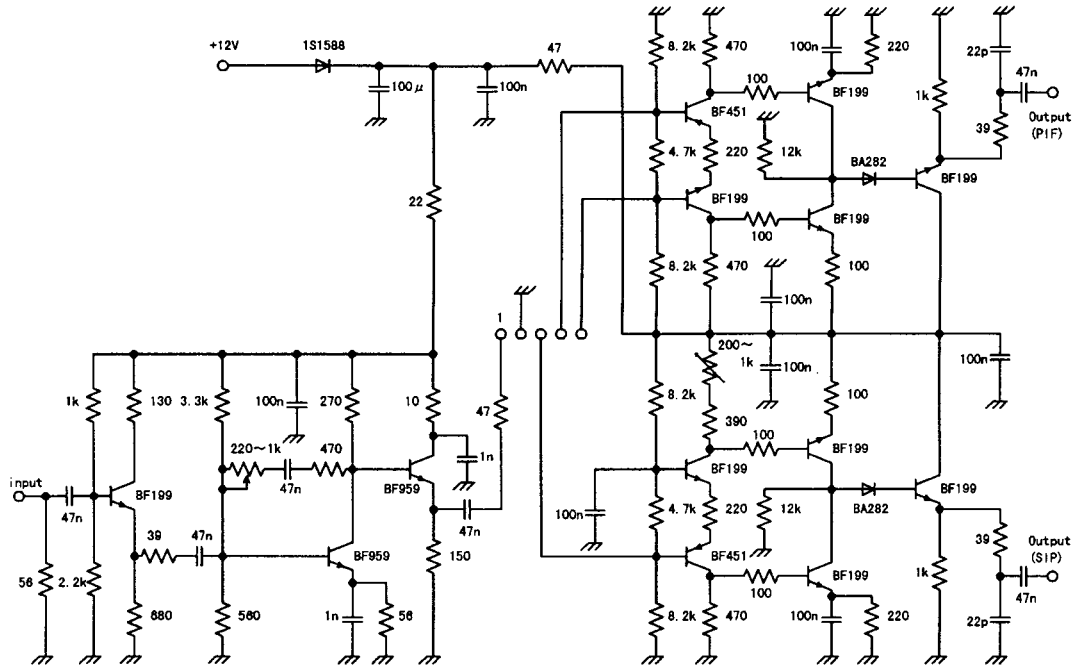


Fig.2 Evaluation circuit

- Equivalent Circuit

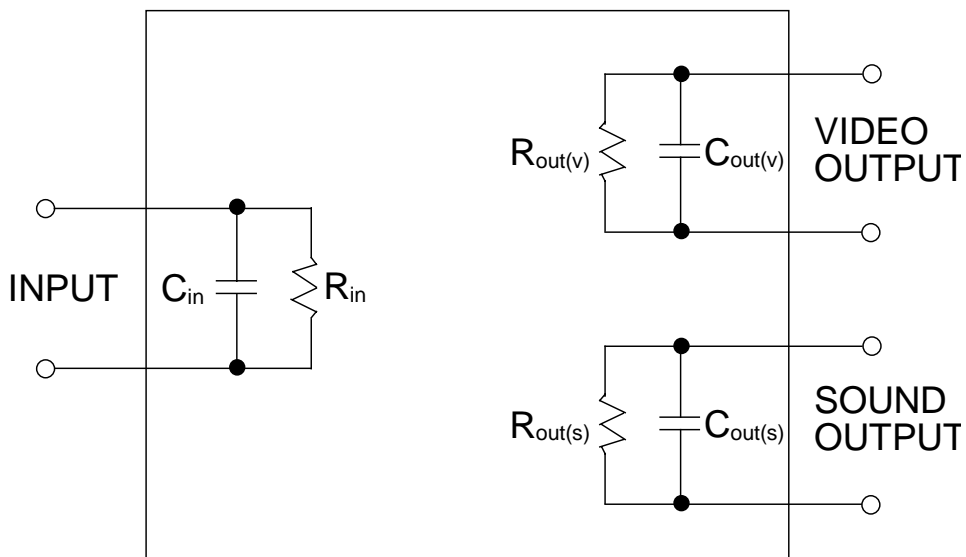
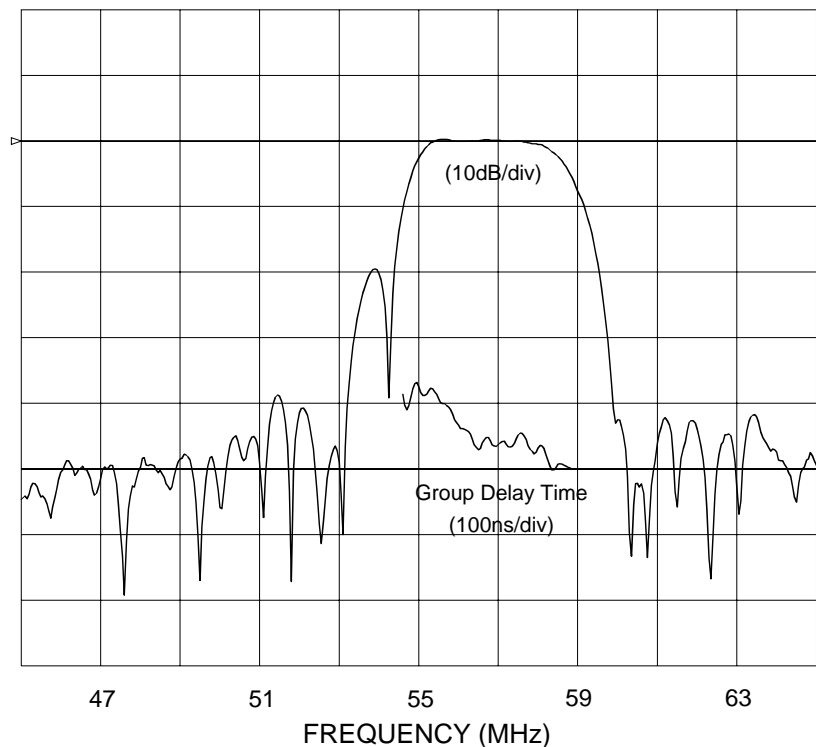


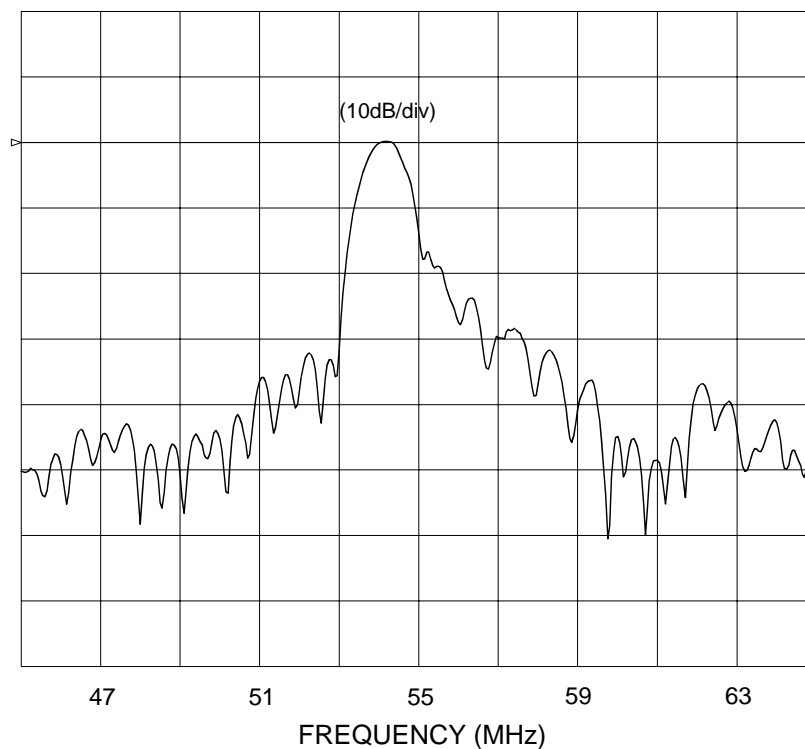
Fig.3 Equivalent circuit

| | | | |
|---------------------------|---------------------------|-------------------------------|--------------|
| Customer Name | Standard specification | FUJITSU MEDIA DEVICES LIMITED | |
| Application | IF Filter for TV(PIF+SIF) | | |
| System | M/N | | |
| Picture Carrier Frequency | 58.75 MHz | DATE | Jun. 27 2003 |
| FMD Part Number | F811CPL | Version 1.3 | |

Video CH

**Frequency Characteristics**

Sound CH

**Frequency Characteristics**