

Customer Name	Standard specification	FUJITSU MEDIA DEVICES LIMITED	
Application	IF Filter for TV(SIF+SIF)		
System	L'/L		
Picture Carrier Frequency	33.9/38.9 MHz	DATE	Sep. 05 2002
FMD Part Number	F817JPL	Version 1.2	

Table 1-1 Electrical Specification (Ta=25°C)

Channel 1 (L') INPUT=Pin No.1						
Items	Conditions	Specification			Unit	Remarks
		Min.	Typ.	Max.		
Insertion Loss	fp+6.5 (40.40 MHz)	16.2	17.7	19.2	dB	
Relative level	fp-1.5 (32.40 MHz)	—	-42	-38	dB	
	fp (33.90 MHz)	—	-50	-38	dB	
	fp+4.5 (38.40 MHz)	—	-31	-25	dB	
	fp+5.85 (39.75 MHz)	- 0.9	0.6	2.1	dB	
	fp+6.5 (40.40 MHz)	—	0	—	dB	Reference
	fp+8 (41.90 MHz)	—	-31	-18	dB	
	25.00 ~ 33.90 MHz	—	-39	-30	dB	
	41.90 ~ 45.00 MHz	—	-31	-18	dB	
Input Capacitance	Cin (1.0 MHz)	—	10.0	—	pF	
Output Capacitance	Cout (1.0 MHz)	—	4.6	—	pF	
Temperature coefficient		—	-80	—	ppm/°C	

Customer Name	Standard specification	FUJITSU MEDIA DEVICES LIMITED	
Application	IF Filter for TV(SIF+SIF)		
System	L'/L		
Picture Carrier Frequency	33.9/38.9 MHz	DATE	Sep. 05 2002
FMD Part Number	F817JPL	Version 1.2	

Table 1-2 Electrical Specification (Ta=25°C)

Channel 2 (L)		INPUT=Pin No.2				
Items	Conditions	Specification			Unit	Remarks
		Min.	Typ.	Max.		
Insertion Loss	fp-6.5 (32.40 MHz)	12.2	13.7	15.2	dB	
Relative level	fp-8 (30.90 MHz)	—	-40	-35	dB	
	fp-6.5 (32.40 MHz)	—	0	—	dB	Reference
	fp-5.85 (33.05 MHz)	- 2.0	- 0.5	1.0	dB	
	fp-4.5 (34.40 MHz)	—	-40	-28	dB	
	fp (38.90 MHz)	—	-48	-35	dB	
	fp+1.5 (40.40 MHz)	—	-42	-35	dB	
	25.00 ~ 30.90 MHz	—	-40	-30	dB	
	38.90 ~ 45.00 MHz	—	-40	-30	dB	
	Output Capacitance	Cout (1.0 MHz)	—	4.6	—	pF
Temperature coefficient		—	-80	—	ppm/°C	

Customer Name	Standard specification	FUJITSU MEDIA DEVICES LIMITED	
Application	IF Filter for TV(SIF+SIF)		
System	L'/L		
Picture Carrier Frequency	33.9/38.9 MHz	DATE	Sep. 05 2002
FMD Part Number	F817JPL	Version 1.2	

● Dimensions

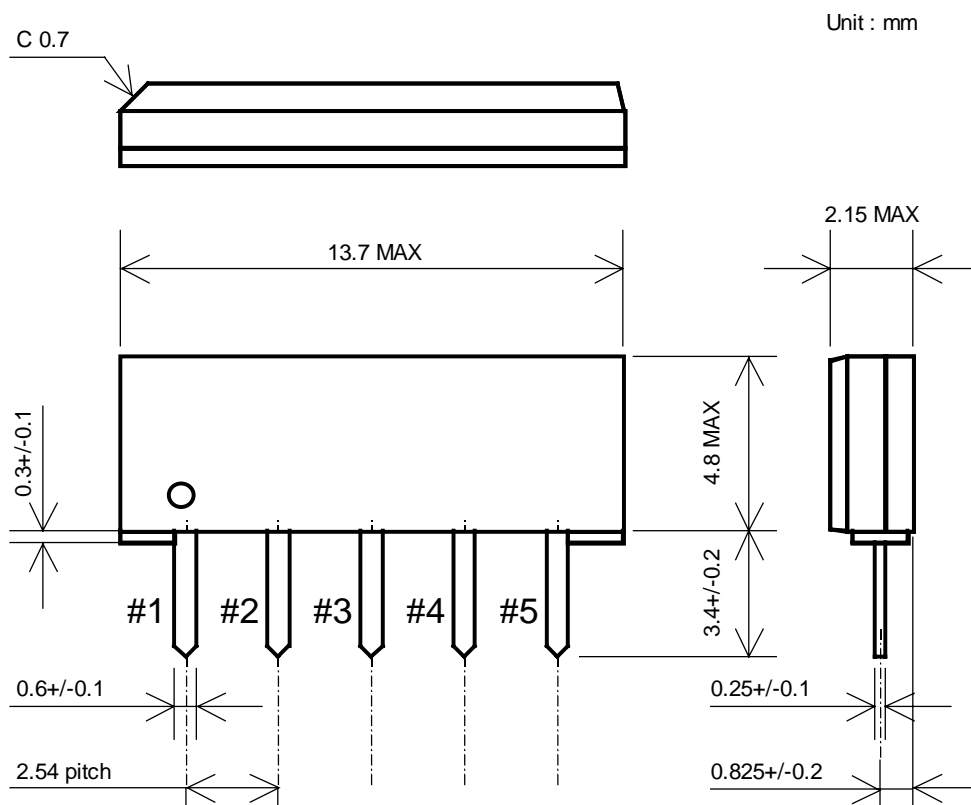


Fig.1

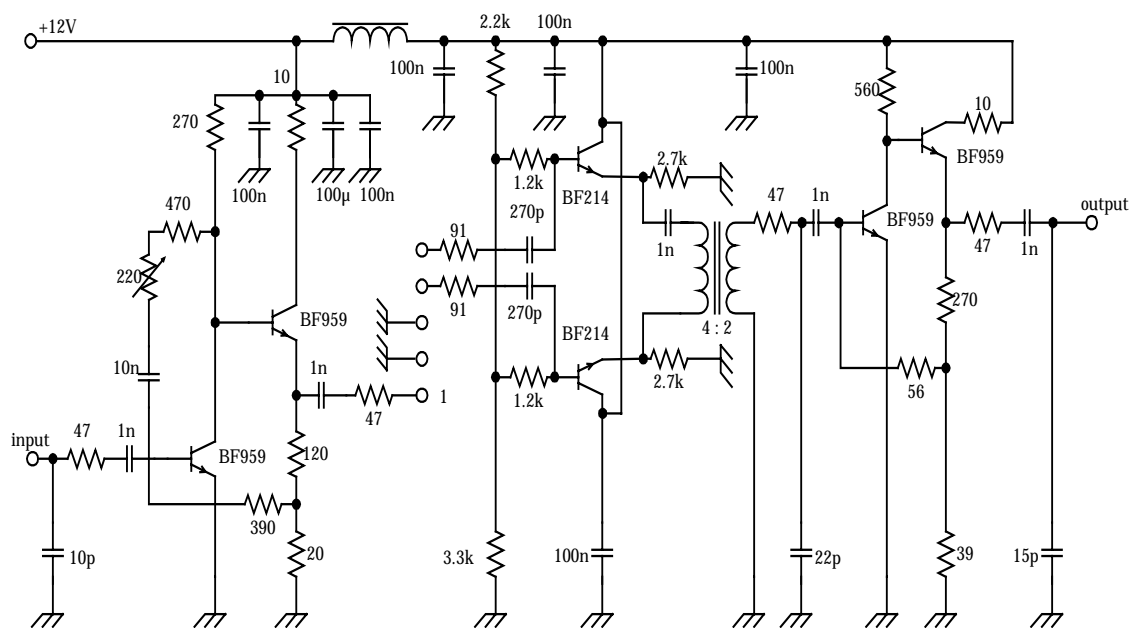
● Pin Configuration

Table 2

Pin No.	Symbol	Function
#1	IN(L')	Input(L')
#2	IN(L)	Input(L)
#3	GND	Ground
#4	OUT	Output
#5	OUT	Output

Customer Name	Standard specification	FUJITSU MEDIA DEVICES LIMITED	
Application	IF Filter for TV(SIF+SIF)		
System	L'/L		
Picture Carrier Frequency	33.9/38.9 MHz	DATE	Sep. 05 2002
FMD Part Number	F817JPL	Version 1.2	

- Evaluation Circuit



Channel 1 (L') Pin No.1:Input Pin No.2:Ground

Channel 2 (L) Pin No.1:Ground Pin No.2:Input

Fig.2 Evaluation circuit

- Equivalent Circuit

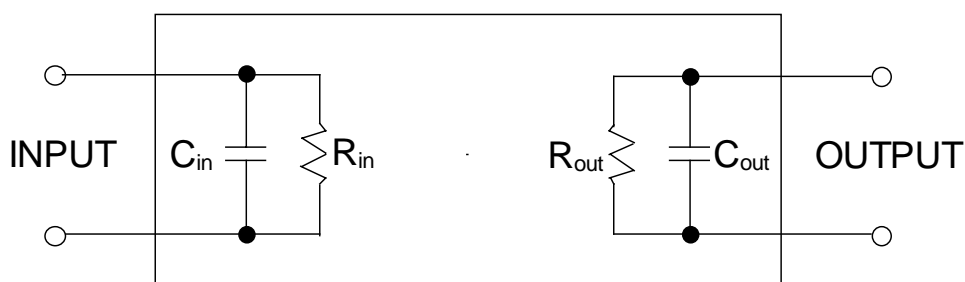
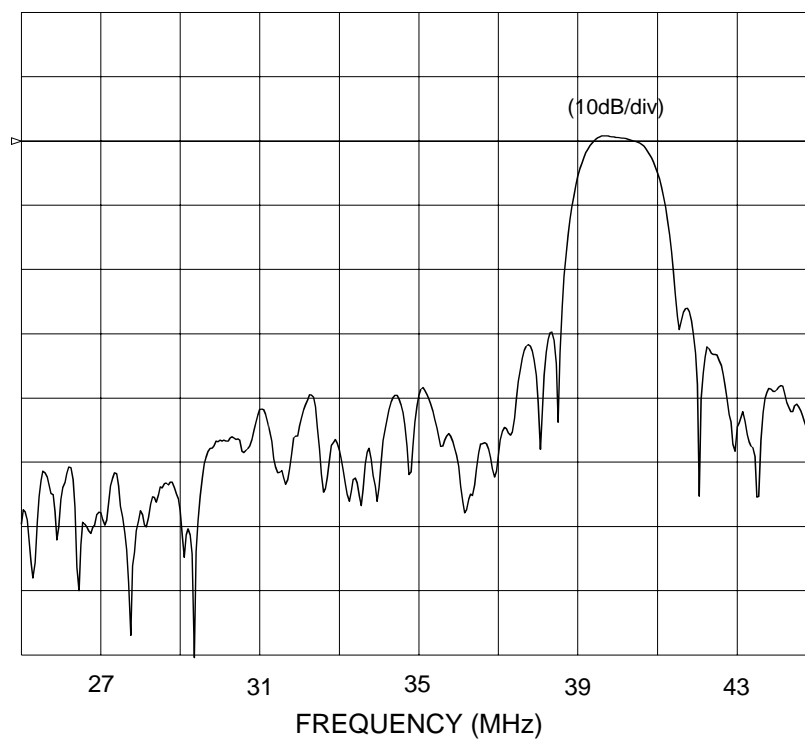


Fig.3 Equivalent circuit

Customer Name	Standard specification	FUJITSU MEDIA DEVICES LIMITED	
Application	IF Filter for TV(SIF+SIF)		
System	L'/L		
Picture Carrier Frequency	33.9/38.9 MHz	DATE	Sep. 05 2002
FMD Part Number	F817JPL	Version 1.2	

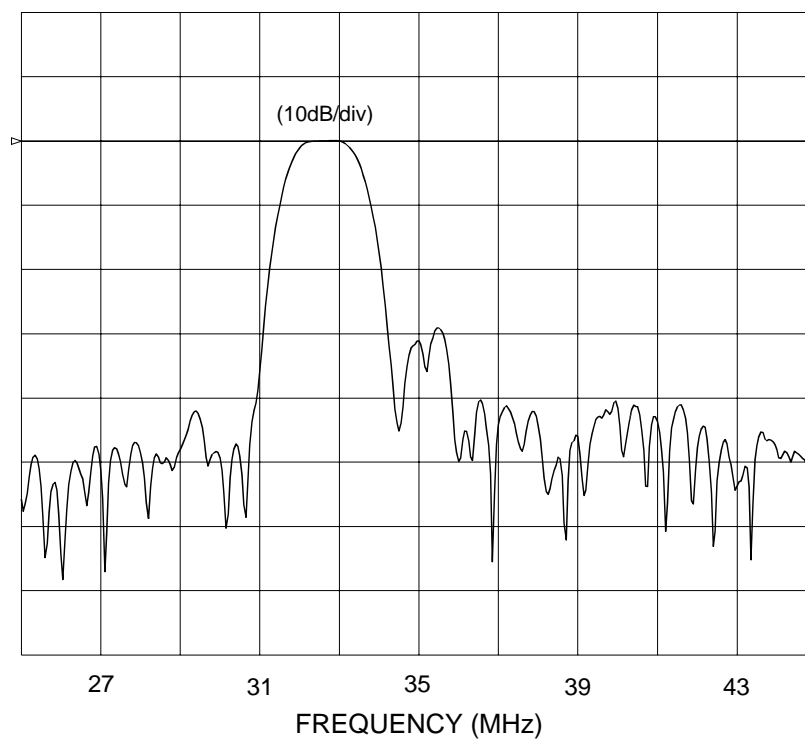
Channel 1 (L')



Frequency Characteristics

Customer Name	Standard specification	FUJITSU MEDIA DEVICES LIMITED	
Application	IF Filter for TV(SIF+SIF)		
System	L'/L		
Picture Carrier Frequency	33.9/38.9 MHz	DATE	Sep. 05 2002
FMD Part Number	F817JPL	Version 1.2	

Channel 2 (L)



Frequency Characteristics