

NEW

LASER DIODE

Laser diode

L8958 series

High output power: 1.5 mW, pigtail type



Features

- High output power: 1.5 mW
- High-speed response: 1.25 Gbps Max.
- 1.3 μ m FP (Fabry-perot) laser

Applications

- Optical fiber communications

■ Absolute maximum ratings (Ta=25 °C)

Parameter	Symbol	Note	Value	Unit
Forward current (laser diode)	If Max		Ith + 14 (CW)	mA
		Duty ratio 50 %	Ith + 28 (pulse)	
Operating temperature	Topr	*	-20 to +70	°C
Storage temperature	Tstg	*	-40 to +70	°C

* No condensation

■ Electrical and optical characteristics (Ta=25 °C, If=Ith + 10 mA, unless otherwise noted)

Parameter	Symbol	Condition	Min.	Typ.	Max.	Unit
Forward voltage	V _F	CW	-	1.1	1.3	V
Threshold current	I _{th}		-	5	15	mA
Fiber end output	P _F	CW	-	1.5	-	mW
Peak emission wavelength	λ_p	CW	1290	1310	1330	nm
Rise/fall times	tr, tf	20 to 80 %	-	250	-	ps
Monitor current (photodiode)	I _m	CW, V _{RM} =3.5 V	-	0.4	-	mA
Dark current (photodiode)	I _D	V _{RM} =3.5 V	-	-	100	nA

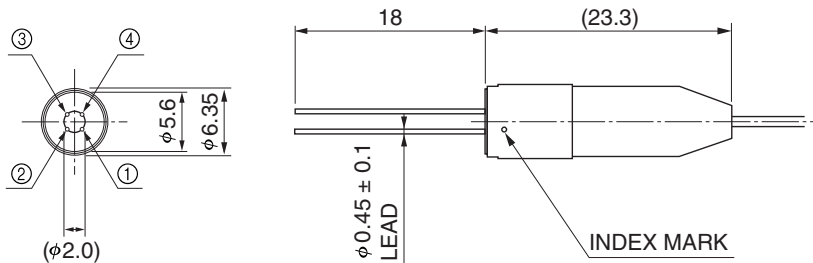
■ Package lineup

Configuration		L8958			
		-11	-12	-13	-14
Package	Type	Coaxial			
Fiber	Type	SM (9.5/125) ϕ 0.9			
	Length	1 m +20 cm/-0 cm			
Connector	Type	SC	FC	MU	LC
	Dimensional outline	①	②	③	④

■ Dimensional outlines (unit: mm, tolerance unless otherwise noted: ± 0.2)

Package

① Coaxial



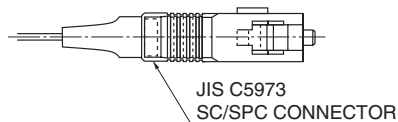
KLEDA0078EA

■ Pin connection

Pin No.	L8958 series
①	CASE
②	CATHODE (LD)
③	ANODE (PD)
④	CATHODE (PD) ANODE (LD)

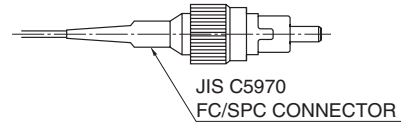
Connector

① SC



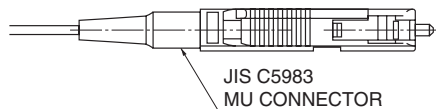
KIRDA0102EA

② FC



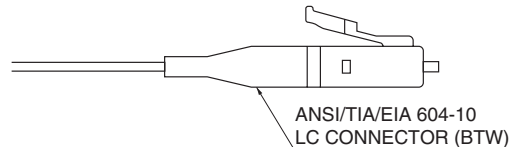
KIRDA0103EA

③ MU



KIRDA0164EA

④ LC



KIRDA0165EA

HAMAMATSU

Information furnished by HAMAMATSU is believed to be reliable. However, no responsibility is assumed for possible inaccuracies or omissions. Specifications are subject to change without notice. No patent rights are granted to any of the circuits described herein. ©2003 Hamamatsu Photonics K.K.

HAMAMATSU PHOTONICS K.K., Solid State Division

1126-1 Ichino-cho, Hamamatsu City, 435-8558 Japan, Telephone: (81) 053-434-3311, Fax: (81) 053-434-5184, <http://www.hamamatsu.com>

U.S.A.: Hamamatsu Corporation: 360 Foothill Road, P.O. Box 6910, Bridgewater, N.J. 08807-0910, U.S.A., Telephone: (1) 908-231-0960, Fax: (1) 908-231-1218

Germany: Hamamatsu Photonics Deutschland GmbH: Arzbergerstr. 10, D-82211 Herrsching am Ammersee, Germany, Telephone: (49) 08152-3750, Fax: (49) 08152-2658

France: Hamamatsu Photonics France S.A.R.L.: 8, Rue du Saule Trapu, Parc du Moulin de Massy, 91882 Massy Cedex, France, Telephone: 33-(1) 69 53 71 00, Fax: 33-(1) 69 53 71 10

United Kingdom: Hamamatsu Photonics UK Limited: 2 Howard Court, 10 Tewin Road, Welwyn Garden City, Hertfordshire AL7 1BW, United Kingdom, Telephone: (44) 1707-294888, Fax: (44) 1707-325777

North Europe: Hamamatsu Photonics Norden AB: Smidesvägen 12, SE-171 41 Solna, Sweden, Telephone: (46) 8-509-031-00, Fax: (46) 8-509-031-01

Italy: Hamamatsu Photonics Italia S.R.L.: Strada della Moia, 1/E, 20020 Arese, (Milano), Italy, Telephone: (39) 02-935-81-733, Fax: (39) 02-935-81-741