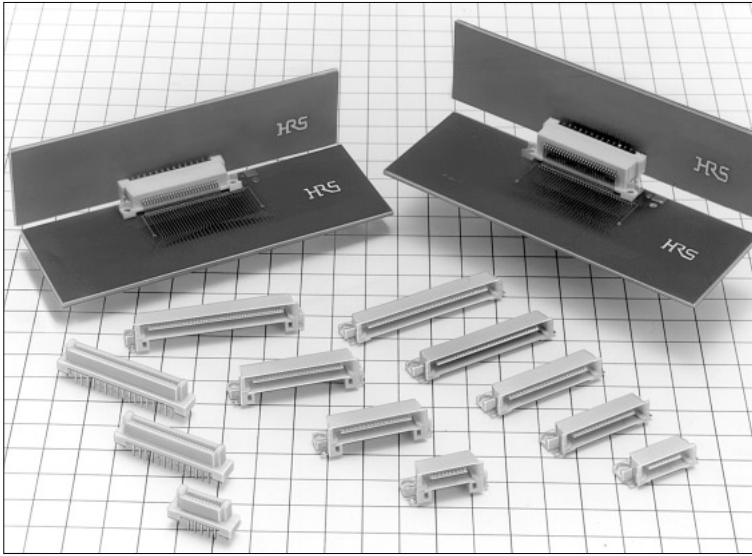
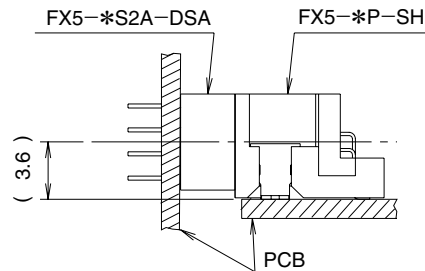


# 1mm Pitch Connector for Vertical Connection

## FX5 Series



### Connecting Height: Low profile



## ■Features

### 1. Header Side : 2 Types Available

Two header types, low profile and high profile, are prepared according to the contact number variation and the connecting height variation, considering unit connections of HDD, FDD, CD-ROM and so on.

### 2. Two-stages Sequential Structure

The connecting sequence is designed with 2 stages so that the end user side can maintain.

### 3. Mating Guide

In the connecting process, the self-alignment is  $\pm 1\text{mm}$  high sufficient to the guide level, and the guide rib is provided to achieve easy mating.

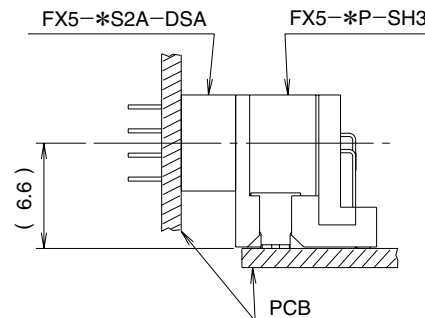
### 4. SMT Coplanarity

The coplanarity of SMT soldered area secures the high accuracy of 0.1mm.

### 5. Miniaturization

The connector is miniaturized about 30% in the mounting area, compared with the conventional half pitch connector (1.27mm).

### Connecting Height: High profile



## ■Applications

Note PC , other business equipments

## ■Product Specifications

|        |                |         |                             |                         |                           |                         |
|--------|----------------|---------|-----------------------------|-------------------------|---------------------------|-------------------------|
| Rating | Current rating | 0.5A    | Operating Temperature Range | -55°C to +85°C (Note 1) | Storage Temperature Range | -10°C to +60°C (Note 2) |
|        | Voltage rating | 100V AC | Operating Humidity Range    | 40% to 80%              | Storage Humidity Range    | 40% to 70%              |

| Item                             | Specifications   | Condition   |
|----------------------------------|--|---|
| 1. Insulation Resistance         | 100M ohms min.   | 250V DC   |
| 2. Withstanding voltage          | No flashover or insulation breakdown.                                      | 300V AC/1 minute  |
| 3. Contact Resistance            | 50m ohms max.  | 100mA   |
| 4. Vibration                     | No electrical discontinuity of 1μs or more                                 | Frequency: 10 to 55 Hz, single amplitude of 0.75 mm, 2 hours in each of the 3 directions.               |
| 5. Moisture Resistance           | Contact resistance: 60m ohms max. Insulation resistance: 100M ohms min.    | 96 hours at temperature of 40°C and humidity of 90% to 95%  |
| 6. Temperature Cycle             | Contact resistance: 60m ohms max.<br>Insulation resistance: 100M ohms min. | (-55°C: 30 minutes, 15 to 35°C: 2 to 3 minutes<br>85°C: 30 minutes, 15 to 35°C: 2 to 3minutes) 5 cycles |
| 7. Durability (Mating/un-mating) | Contact resistance: 60m ohms max.  | 500 cycles  |
| 8. Resistance to Soldering heat  | No deformation of components affecting performance.                        | Reflow: At the recommended temperature profile  |
|                                  |  | Manual soldering: 300°C for 3 seconds   |

Note 1: Includes temperature rise caused by current flow.

Note 2: The term "storage" refers to products stored for long period of time prior to mounting and use. Operating Temperature Range and Humidity range covers non conducting stored condition of installed connectors in storage, shipment or during transportation.

## Material

| Part               | Material        | Finish                      | Remarks |
|--------------------|-----------------|-----------------------------|---------|
| Insulator          | Polyamide       | Beige                       | UL94V-0 |
| Header Contact     | Brass           | Contact area : Gold plated  | _____   |
| Receptacle Contact | Phosphor bronze | Lead area : Tin-lead plated | _____   |

Note : The black dots on the insulator will not affect performance.

## ■ Ordering Information

## ●Header

$$\frac{\text{FX5}}{\textcircled{1}} - \frac{*}{\textcircled{2}} \frac{\text{P}}{\textcircled{3}} - \frac{\text{SH}}{\textcircled{4}} \frac{3}{\textcircled{5}}$$

|   |  |
|---|--|
| ① Series Name : FX5                           | ⑤ Connector Height<br><br>Blank : 6.5mm<br><br>3 : 9.5mm |
| ② Number of Contacts : 20, 40, 52, 56, 68, 80 |  |
| ③ Connector Type P: Header                    |  |
| ④ Contact type<br>SH : Right angle SMT type   |  |

Note: The 56 contact header is for SH 3 type only.

## ● Receptacle

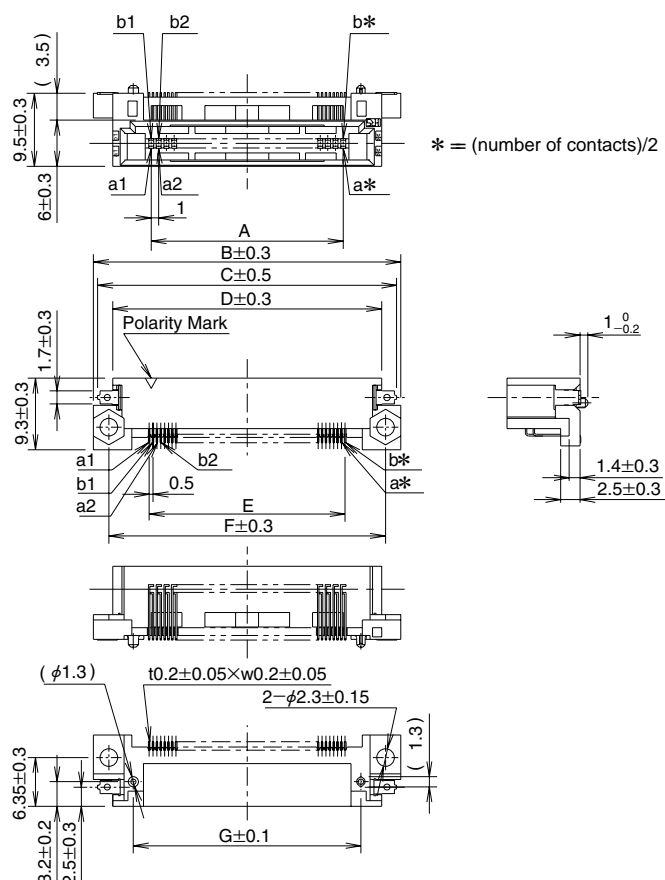
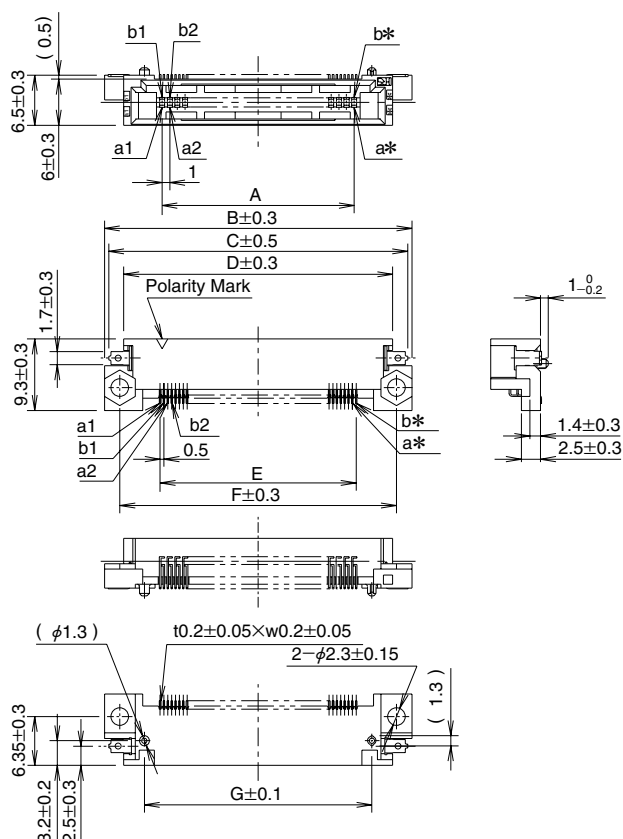
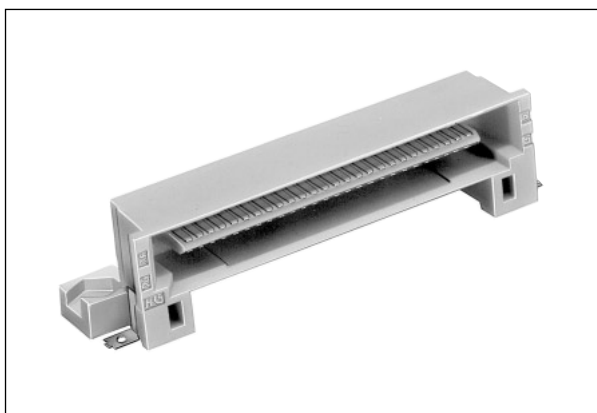
$$\frac{\text{FX5}}{\textcircled{1}} - \frac{*}{\textcircled{2}} \frac{\text{S}}{\textcircled{3}} \frac{2}{\textcircled{4}} \frac{\text{A}}{\textcircled{5}} - \frac{\text{DSA}}{\textcircled{6}} \frac{\text{L}}{\textcircled{7}}$$

|   |                                    |
|---|------------------------------------|
| ① Series Name : FX5                           | ⑥ Contact type                     |
| ② Number of Contacts : 20, 40, 52, 56, 68, 80 | DSA : Straight through hole type   |
| ③ Connector Type S: Receptacle                | ⑦ Board prefixed pin               |
| ④ Contact Sequence                            | Blank : Without board prefixed pin |
| 2 : 2 Stages Sequence                         | L : With board Prefixed pin        |
| ⑤ Serial No. : A                              |                                    |

# Header Low profile



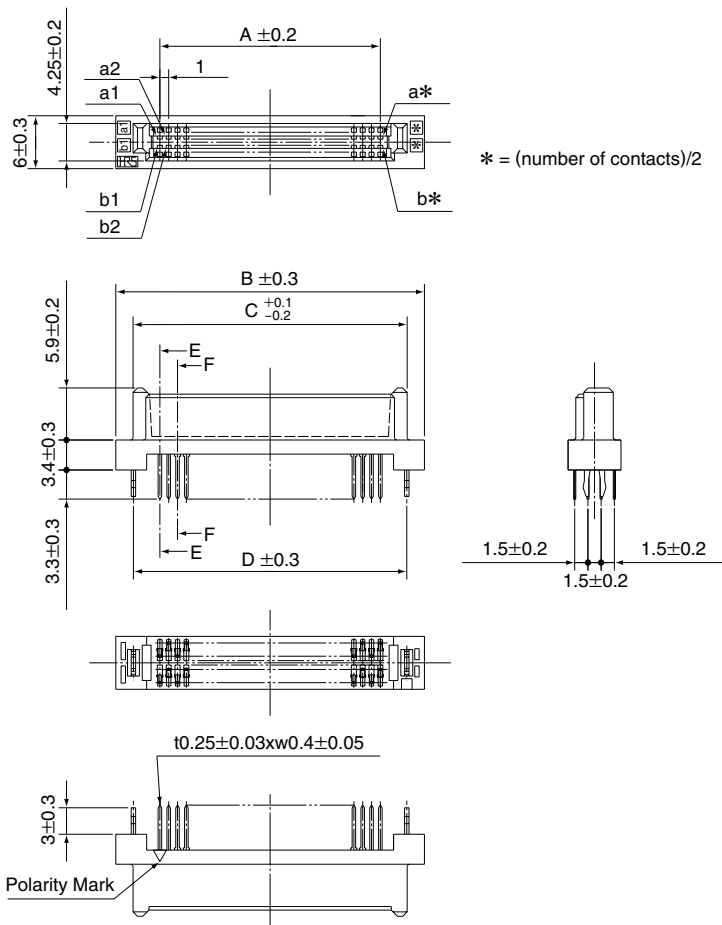
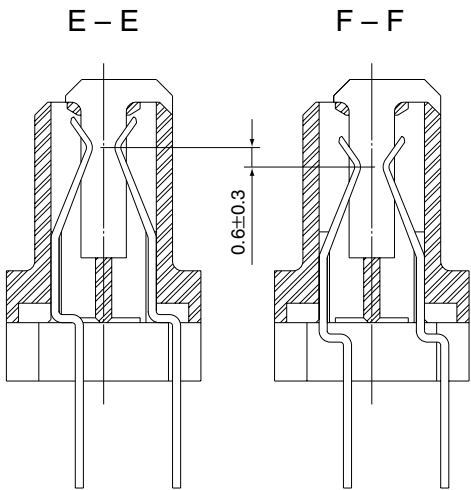
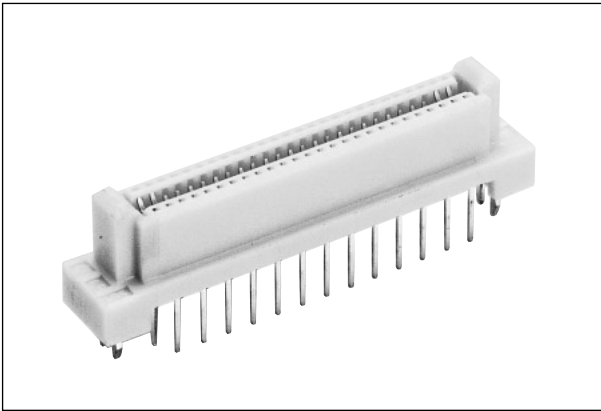
# High profile



Unit: mm

| Part Number | CL No.     | Number of Contacts | A  | B  | C    | D  | E    | F  | G    |
|-------------|------------|--------------------|----|----|------|----|------|----|------|
| FX5-20P-SH  | 575-0001-7 | 20                 | 9  | 24 | 22.9 | 19 | 9.5  | 20 | 13.6 |
| FX5-20P-SH3 | 575-0041-1 |                    |    |    |      |    |      |    |      |
| FX5-40P-SH  | 575-0005-8 | 40                 | 19 | 34 | 32.9 | 29 | 19.5 | 30 | 23.6 |
| FX5-40P-SH3 | 575-0045-2 |                    |    |    |      |    |      |    |      |
| FX5-52P-SH  | 575-0006-0 | 52                 | 25 | 40 | 38.9 | 35 | 25.5 | 36 | 29.6 |
| FX5-52P-SH3 | 575-0046-5 |                    |    |    |      |    |      |    |      |
| FX5-56P-SH3 | 575-1001-2 | 56                 | 27 | 42 | 40.9 | 37 | 27.5 | 38 | 31.6 |
| FX5-68P-SH  | 575-0008-6 | 68                 | 33 | 48 | 46.9 | 43 | 33.5 | 44 | 37.6 |
| FX5-68P-SH3 | 575-0048-0 |                    |    |    |      |    |      |    |      |
| FX5-80P-SH  | 575-0009-9 | 80                 | 39 | 54 | 52.9 | 49 | 39.5 | 50 | 43.6 |
| FX5-80P-SH3 | 575-0049-3 |                    |    |    |      |    |      |    |      |

■Receptacle



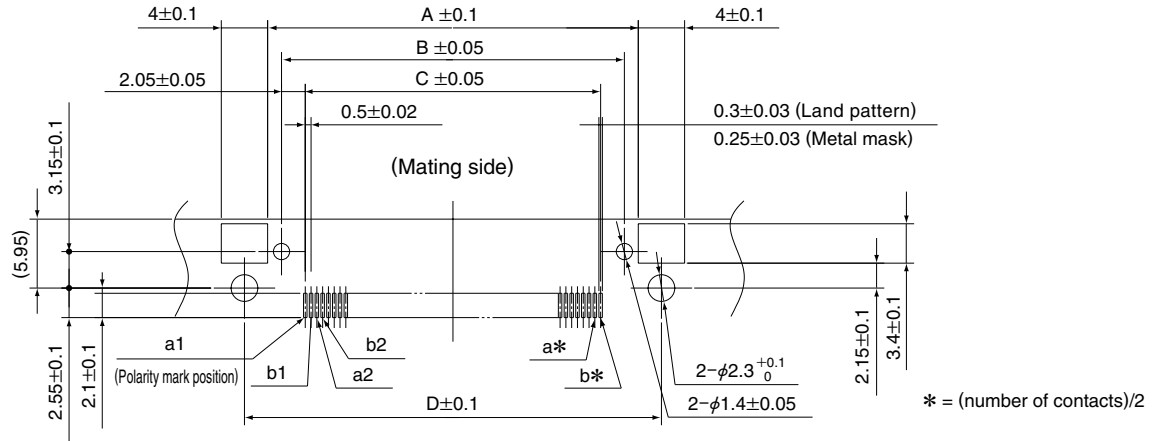
Unit: mm

| Part Number    | CL No.     | Number of Contacts | A  | B  | C     | D  | Order of Contact Sequence(Contact No.) |           |
|----------------|------------|--------------------|----|----|-------|----|--|-----------|
|                |            |                    |    |    |       |    | 1                                      | 2         |
| FX5-20S2A-DSA  | 575-0101-1 | 20                 | 9  | 19 | 15.08 | —  | a1,a2,a9,a10                           | a3 to a8  |
| FX5-20S2A-DSAL | 575-0121-9 |                    |    |    |       | 15 | b1,b2,b9,b10                           | b3 to b8  |
| FX5-40S2A-DSA  | 575-0105-2 | 40                 | 19 | 29 | 25.08 | —  | a1,a2,a19,a20                          | a3 to a18 |
| FX5-40S2A-DSAL | 575-0125-0 |                    |    |    |       | 25 | b1,b2,b19,b20                          | b3 to b18 |
| FX5-52S2A-DSA  | 575-0106-5 | 52                 | 25 | 35 | 31.08 | —  | a1,a2,a25,a26                          | a3 to a24 |
| FX5-52S2A-DSAL | 575-0126-2 |                    |    |    |       | 31 | b1,b2,b25,b26                          | b3 to b24 |
| FX5-56S2A-DSA  | 575-0107-8 | 56                 | 27 | 37 | 33.08 | —  | a1,a2,a27,a28                          | a3 to a26 |
| FX5-56S2A-DSAL | 575-0127-5 |                    |    |    |       | 33 | b1,b2,b27,b28                          | b3 to b26 |
| FX5-68S2A-DSA  | 575-0108-0 | 68                 | 33 | 43 | 39.08 | —  | a1,a2,a33,a34                          | a3 to a32 |
| FX5-68S2A-DSAL | 575-0128-8 |                    |    |    |       | 39 | b1,b2,b33,b34                          | b3 to b32 |
| FX5-80S2A-DSA  | 575-0109-3 | 80                 | 39 | 49 | 45.08 | —  | a1,a2,a39,a40                          | a3 to a38 |
| FX5-80S2A-DSAL | 575-0129-0 |                    |    |    |       | 45 | b1,b2,b39,b40                          | b3 to b38 |

## ◆PCB mounting pattern

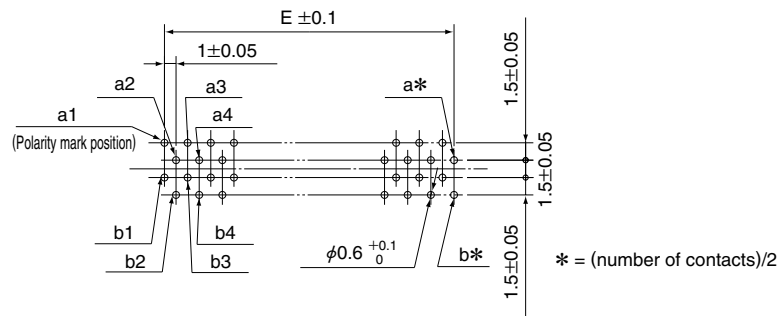
## ●Header

## FX5-\*-SH, FX5-\*-SH3

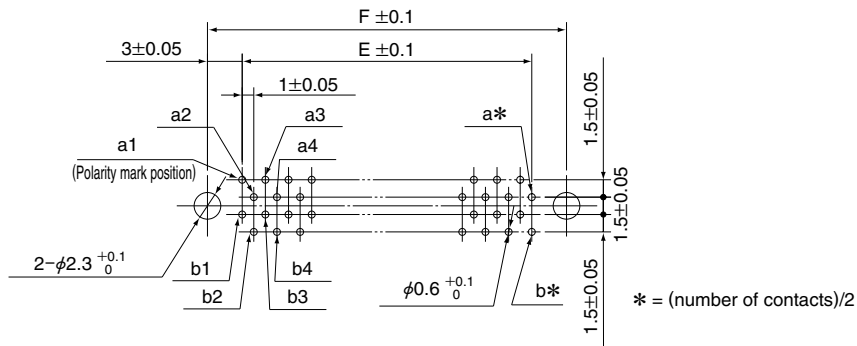


## ● Receptacle

**FX5-\*S2A-DSA**



**FX5-\*S2A-DSAL**

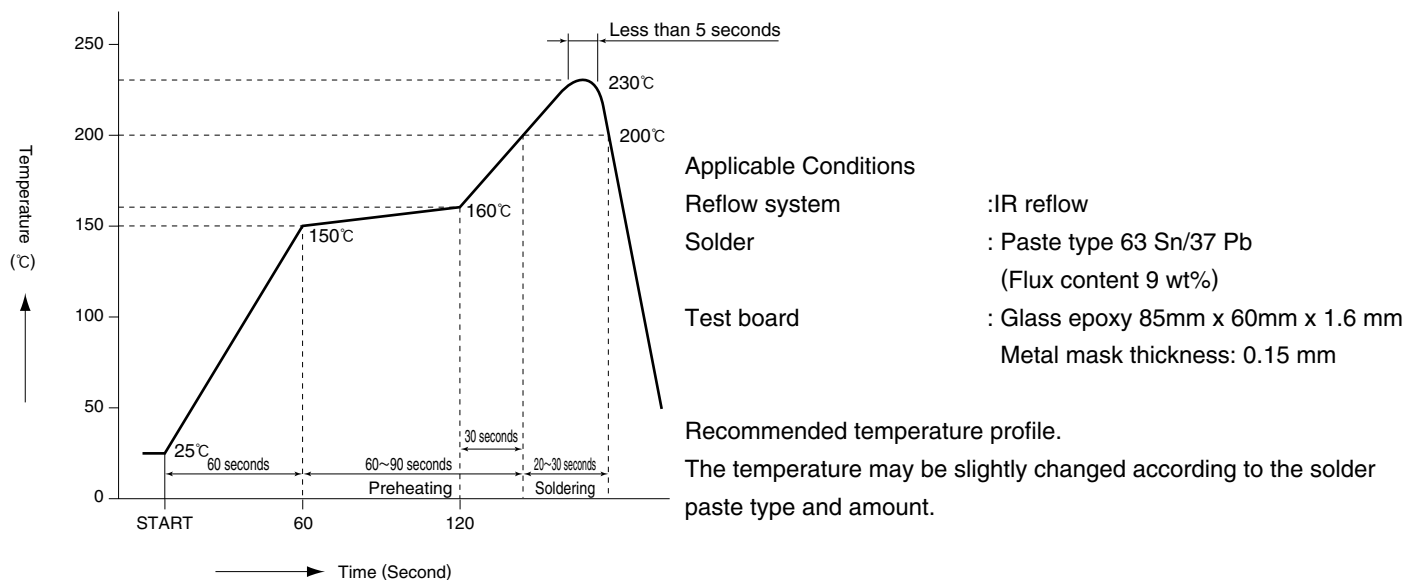


Unit: mm

| Number of Contacts | A  | B    | C    | D  | E  | F  |
|--------------------|----|------|------|----|----|----|
| 20                 | 16 | 13.6 | 9.5  | 20 | 9  | 15 |
| 40                 | 26 | 23.6 | 19.5 | 30 | 19 | 25 |
| 52                 | 32 | 29.6 | 25.5 | 36 | 25 | 31 |
| 56                 | 34 | 31.6 | 27.5 | 38 | 27 | 33 |
| 68                 | 40 | 37.6 | 33.5 | 44 | 33 | 39 |
| 80                 | 46 | 43.6 | 39.5 | 50 | 39 | 45 |

**Note:** If the connector is installed in the board beyond the above recommended size, it may cause the connector to board mounting failure or the soldering failure. It is desirable to implement the board process on the recommended PCB mounting pattern.

## ◆ Recommended Temperature Profile



## ◆ Cleaning Conditions

### 1. Organic Solvent Cleaning

| Solvent                         | Cold Cleaning         | Heat Cleaning         |
|---------------------------------|-----------------------|-----------------------|
| IPA (Isopropyl alcohol)         | <input type="radio"/> | <input type="radio"/> |
| HCFC (Hydrochlorophloro carbon) | <input type="radio"/> | <input type="radio"/> |

\*Methylene chloride isn't suitable for this product solvent.

### 2. Liquid Cleaning

When liquid detergents (such as terpene, alkali saponifier) are used, please select the cleaning detergent according to the influence table on metal or resin which is issued from each detergent manufacturer. In addition, please do not leave the connector outdoor, in which moisture remains.

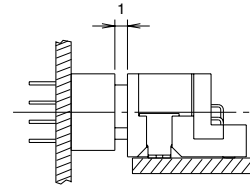
### 3. Cautions for Cleaning

As for organic solvent or liquid cleaning, if flux or detergent remains on the connector, it can cause electrical performance degradation. Therefore, please make sure that the connector is thoroughly cleaned so that neither flux nor detergent is found on the connector.

## ◆ Connector Precautions

### 1. Tolerance Clearance on Mating Side

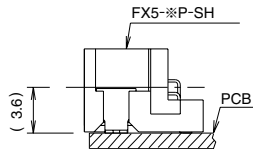
The effective connection clearance of the product is 1.6mm. Please use the product so as to specify within 1mm the clearance between the header and the receptacle in the connection process.



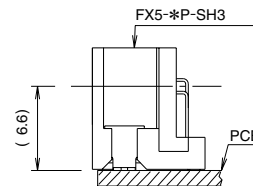
### 2. Header Connector Height

The SMT connector height doesn't include the solder paste thickness. Thus, please consider that the stacking height will slightly increase after the mounting process.

#### Mating Height: Low profile

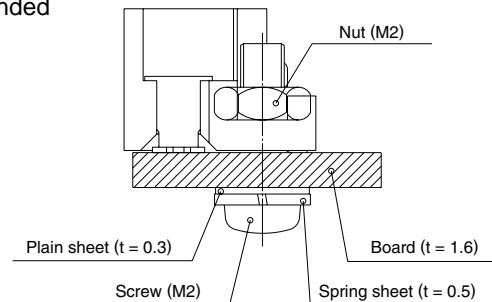


#### Mating Height: High profile



### 3. Screw Fastening Torque (SMT Type)

When the screw is fastened, please use the M2 screw. The recommended fastening torque is 0.15(N.m) max.

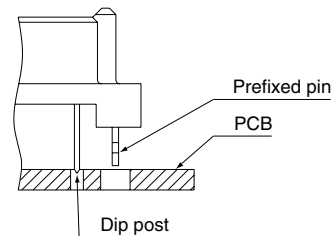


### 4. Prefixed Process to Board (Through hole Type)

If the prefixed process is required for board mounting, please use the prefixed pin type. (Applicable Thickness  $t = 1.6 \pm 0.1$ )

#### Note:

When the connector is mounted on the board, the dip post is guided into the board through-hole in order to prevent the dip post damage, and then insert the board in parallel to the connector so as to push in the prefixed pin.



### 5. Plug and Play

When the connector is inserted or extracted in the active line state, please contact HRS company.

### 6. Others

- It is noted that the forced excessive insertion/extraction will result in damage.
- Avoid holding the board with the connector only, and fix the board by any other means except for the connector.
- The color phase of this product may be slightly different from that of the forming product according to the manufacturing lot, but the difference doesn't affect the performance.