

2012 Size

1900/2100 MHz

Chip Multilayer Splitter/Combiner

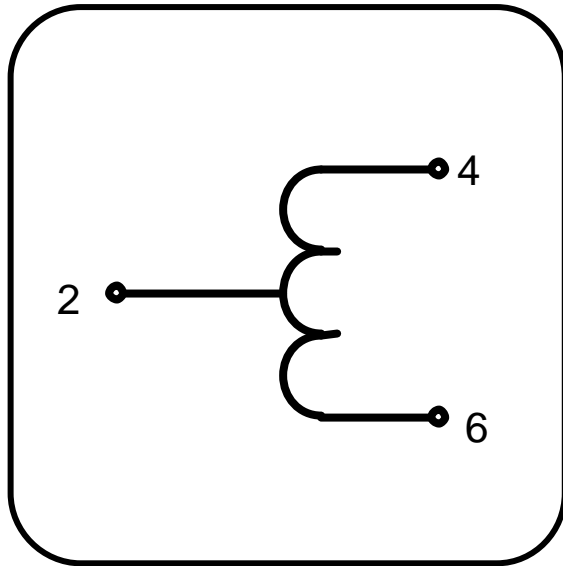
**FSLH-S200C**

All the technical data and information contained  
herein are subject to change without notice.

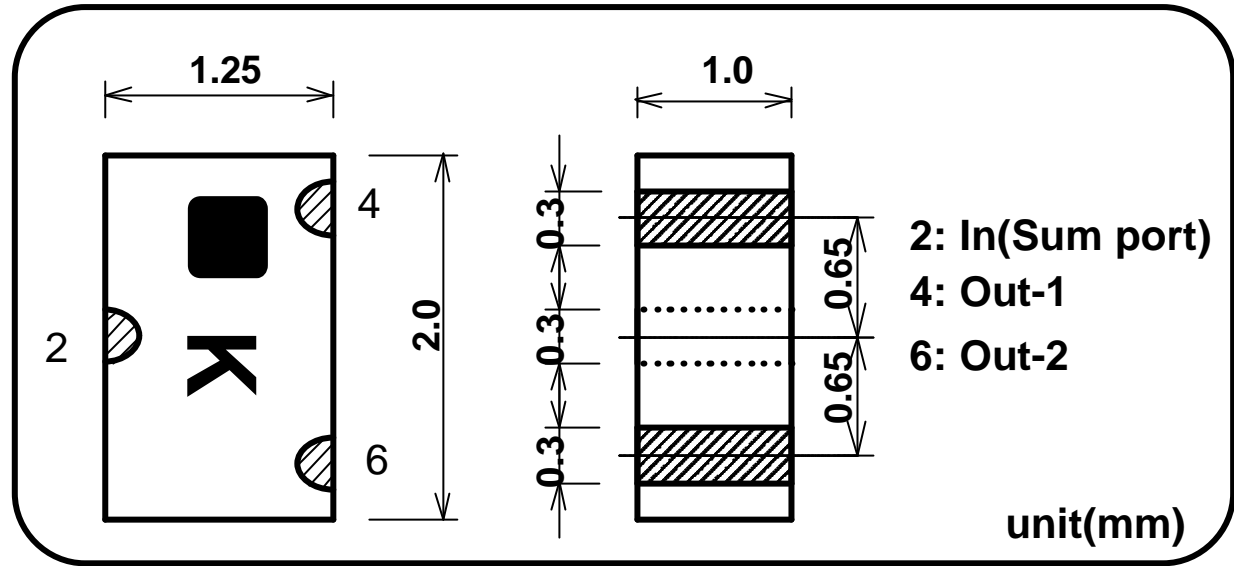


**LH-FSLH-S200C-0406A**

## Equivalent Circuits



## Shape & Size



## Specifications

Part Name: FSLH-S200C

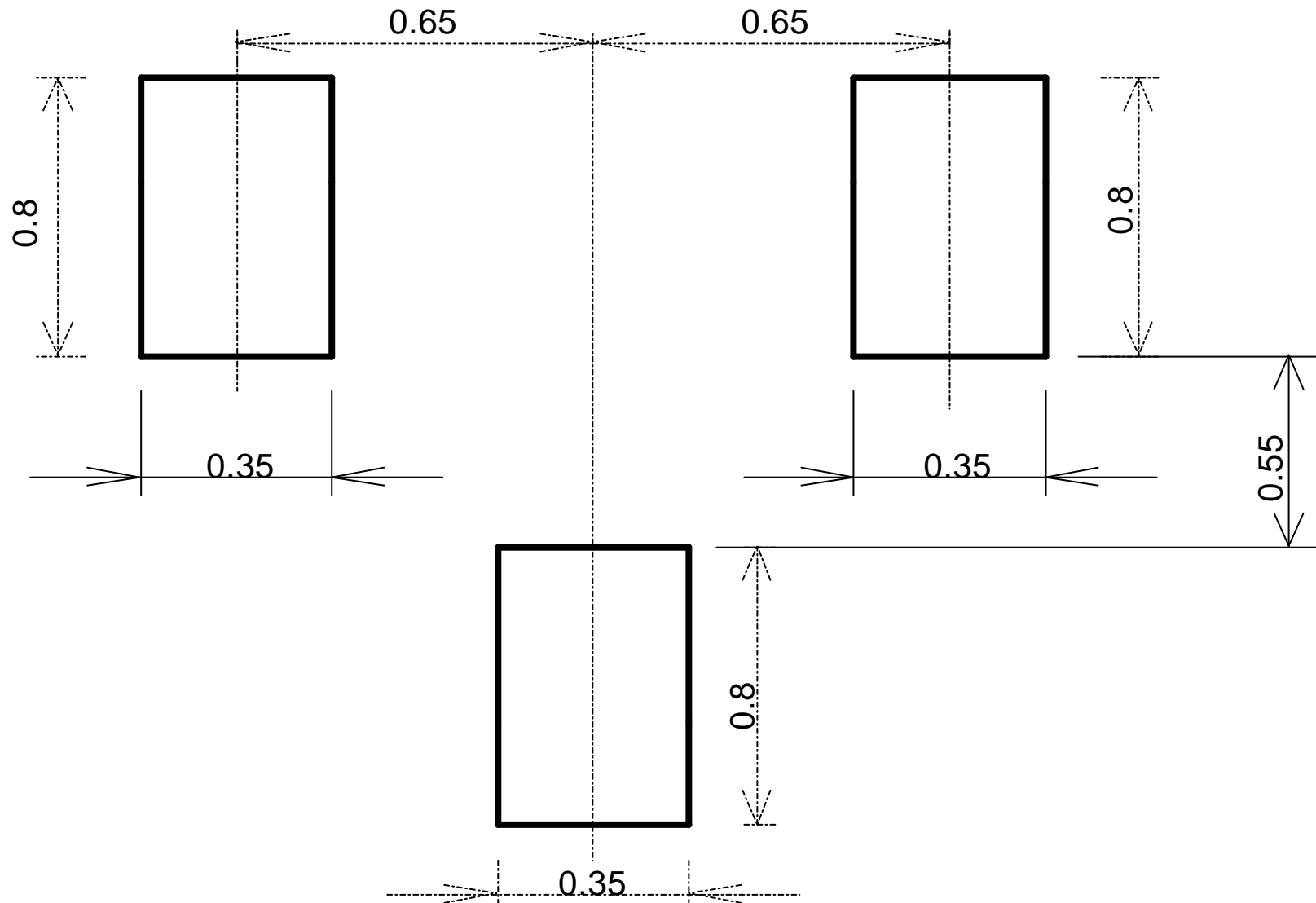
Frequency Range	Matching Capacitor	Insertion Loss *1	Isolation	Return Loss	Handling Power	Temperature Range
1900-2100MHz	1.0pF	1dB Max. (0.30dB Typ.)	12dB Min. (20dB Typ.)	10dB Min. (14dB Typ.)	1W Max. (CW)	-35 to +85 deg.C

\*1 Not include splitting loss (3dB)

All the technical data and information contained herein are subject to change without notice.

LH-FSLH-S200C-0406A

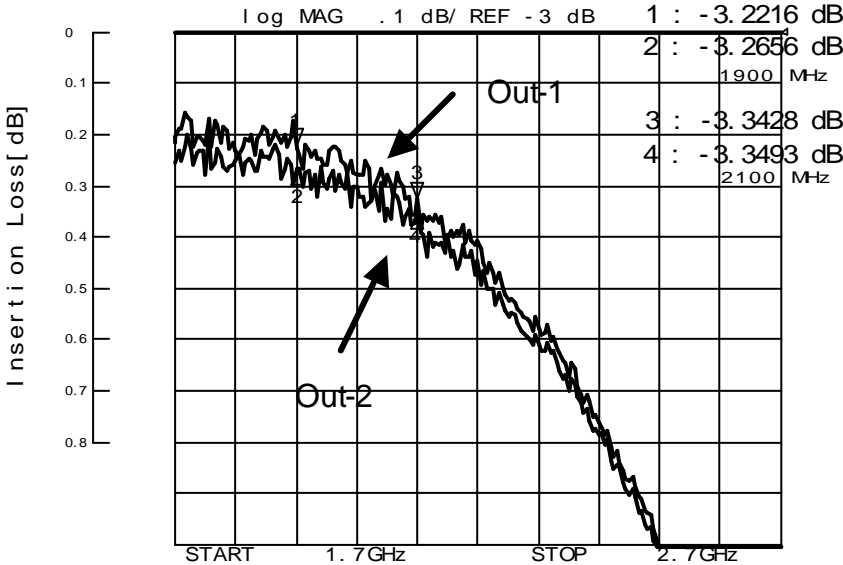
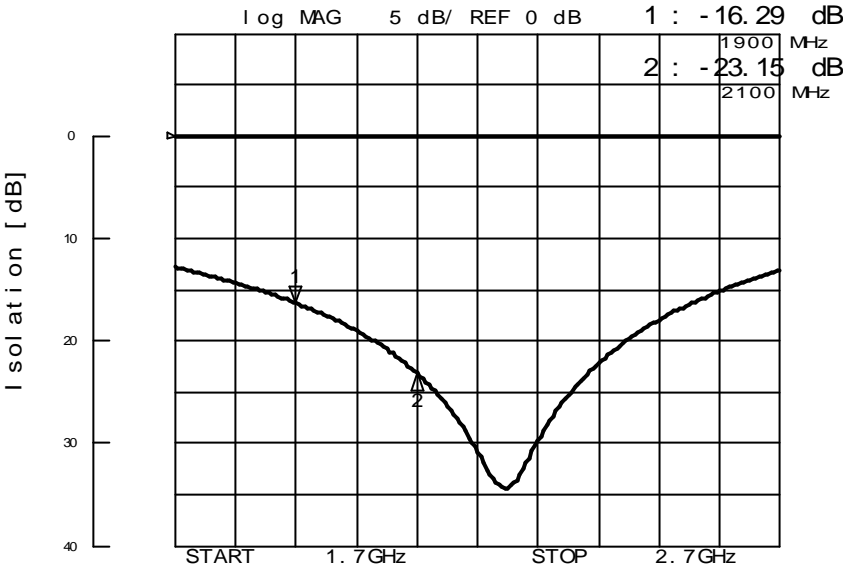
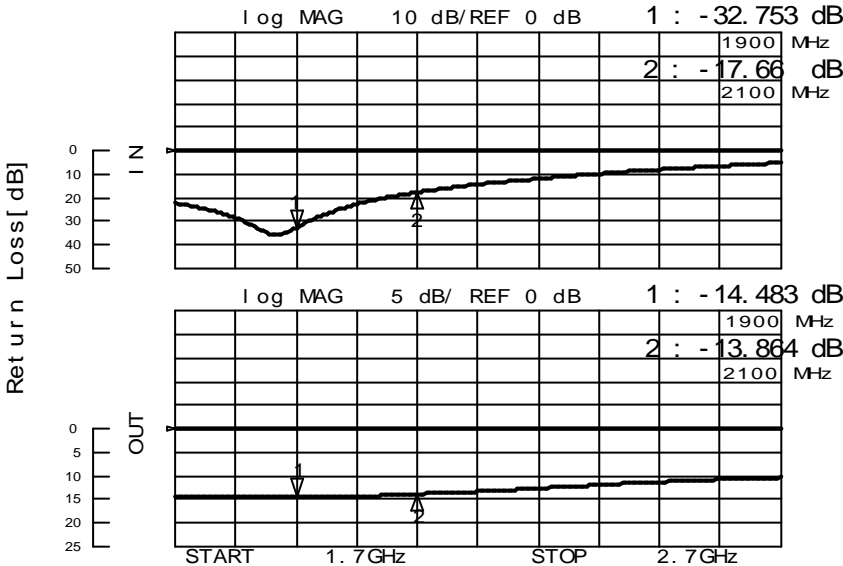
# FOOT PATTERN



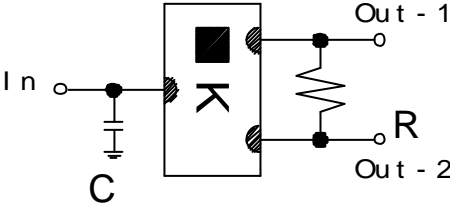
All the technical data and information contained herein are subject to change without notice.

**LH-FSLH-S200C-0406A**

FSLH-S200C Sample Data



1900/2100 MHz  
Chip Multilayer Splitter/Combiner“FSLH-S200C”



C:1.0pF  
R:100 ohm

LH-FSLH-S200C-0406A