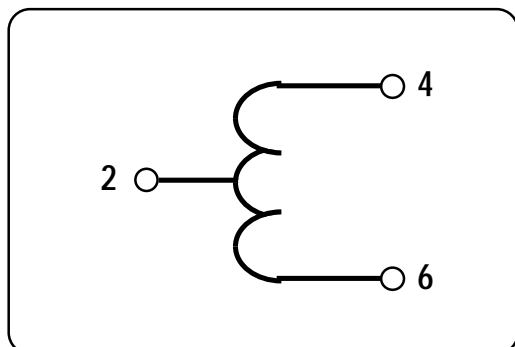


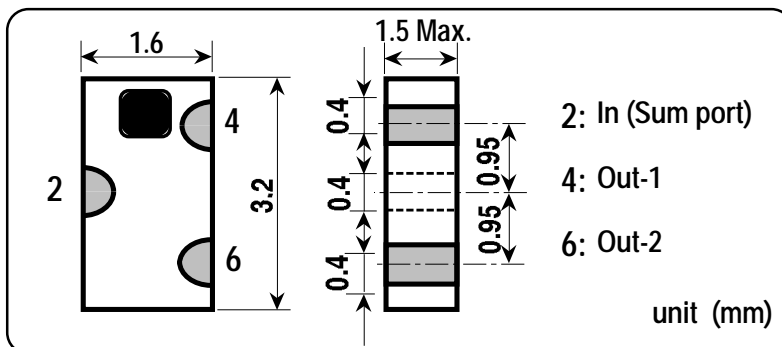
## 200 / 300 MHz Band Chip 0 deg. Splitter / Combiner

Model No. FSTH-24R-[ ]

### Equivalent Circuits



### Shape & Size

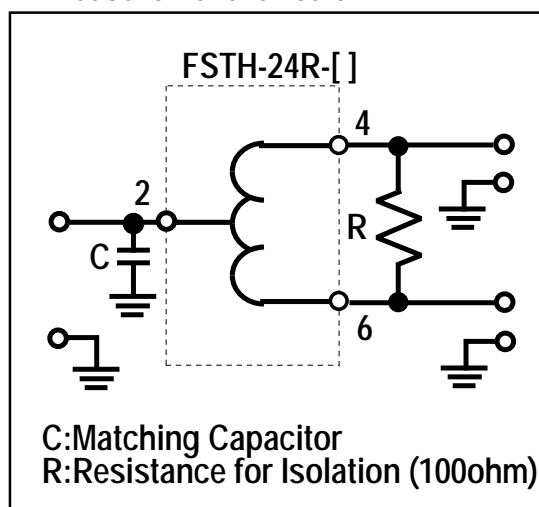


### Specifications

P/N	Frequency Range(MHz)	Matching Capacitor	Insertion Loss	Isolation	Return Loss	Handling Power	Temperature Range
FSTH-24R-1	220-260	11pF	1dB Max. (0.3dB Typ.)	12dB Min. (18dB Typ.)	9.5dB Min. (17.7dB Typ.)	1W Max.	-35 ~ +85 deg.C
FSTH-24R-2	250-280	8pF	*1				

\*1 Not include Splitting Loss (3dB)

### Measurement Circuit



### Typical Data

