

2012 Size

700/900 MHz

Chip Multilayer Splitter/Combiner

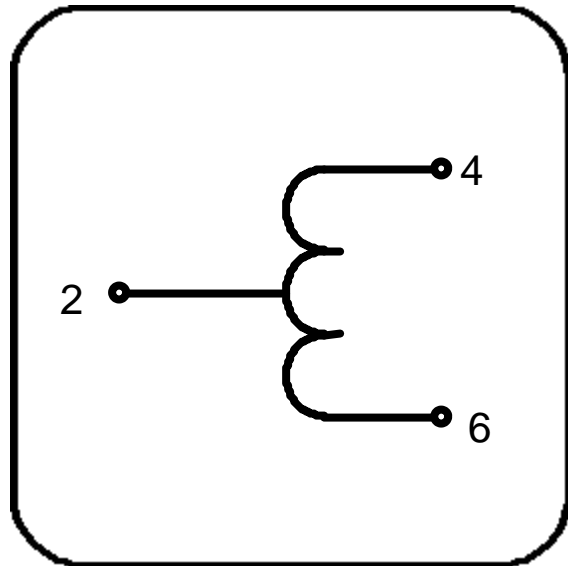
FSLH-S080C

All the technical data and information contained herein are subject to change without notice.

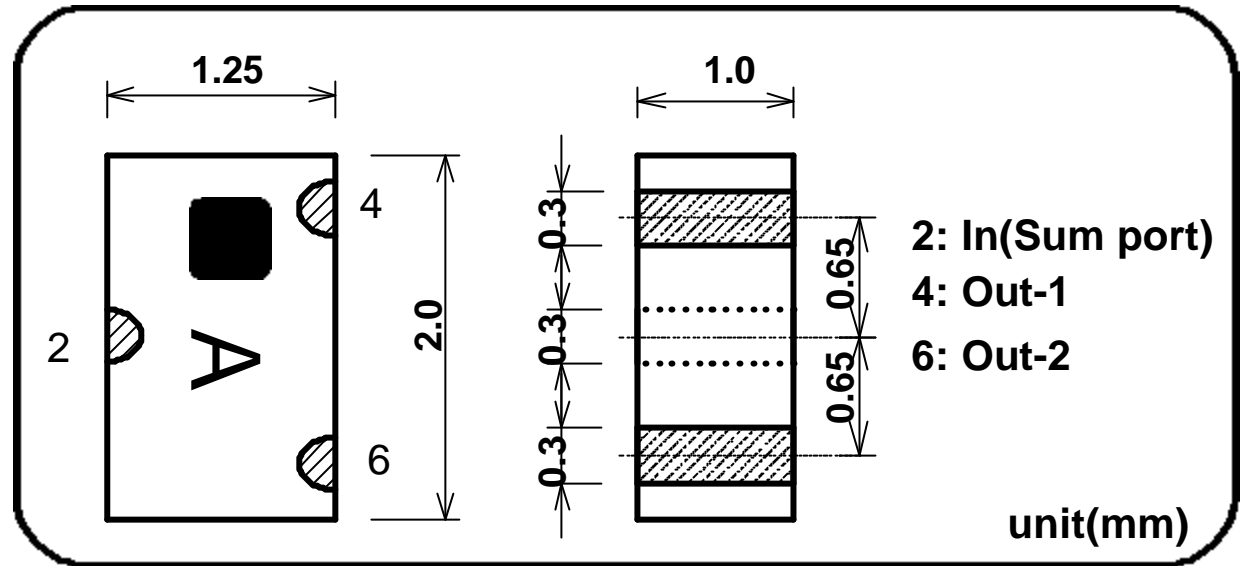


LH-FSLH-S080C-0406A

## Equivalent Circuits



## Shape & Size



## Specifications

Part Name: FSLH-S080C

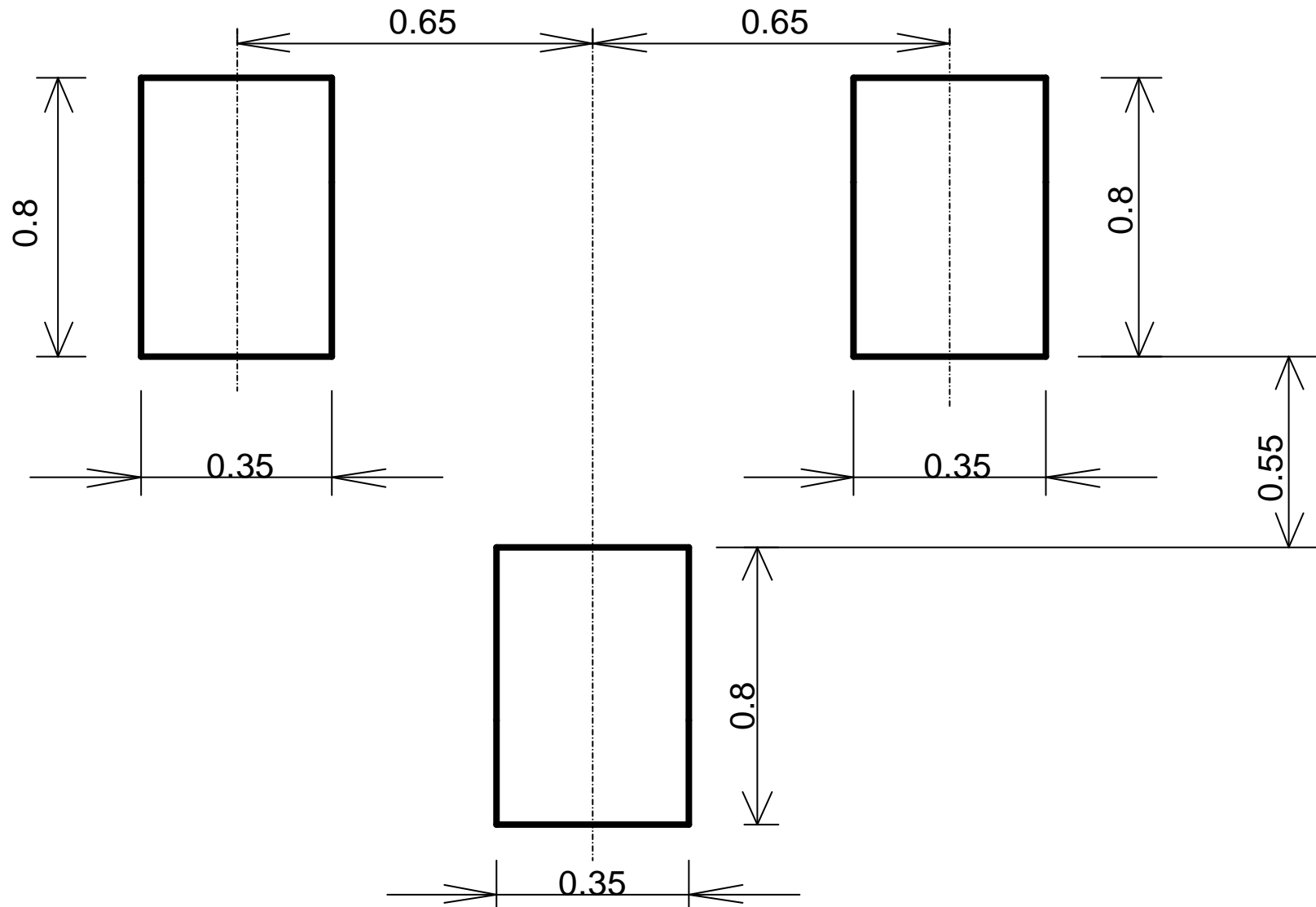
Frequency Range	Matching Capacitor	Insertion Loss *1	Isolation	Return Loss	Handling Power	Temperature Range
700-900MHz	3.0pF	1dB Max. (0.25dB Typ.)	12dB Min. (20dB Typ.)	10dB Min. (20dB Typ.)	1W Max. (CW)	-35 to +85 deg.C

\*1 Not include splitting loss (3dB)

All the technical data and information contained herein are subject to change without notice.

LH-FSLH-S080C-0406A

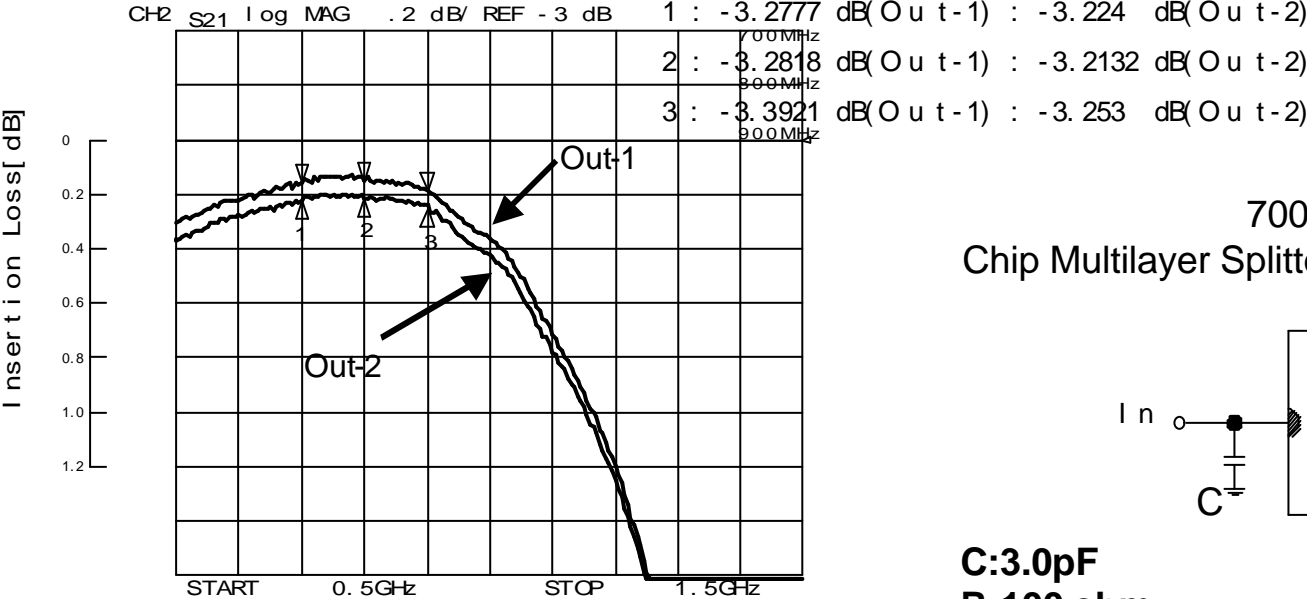
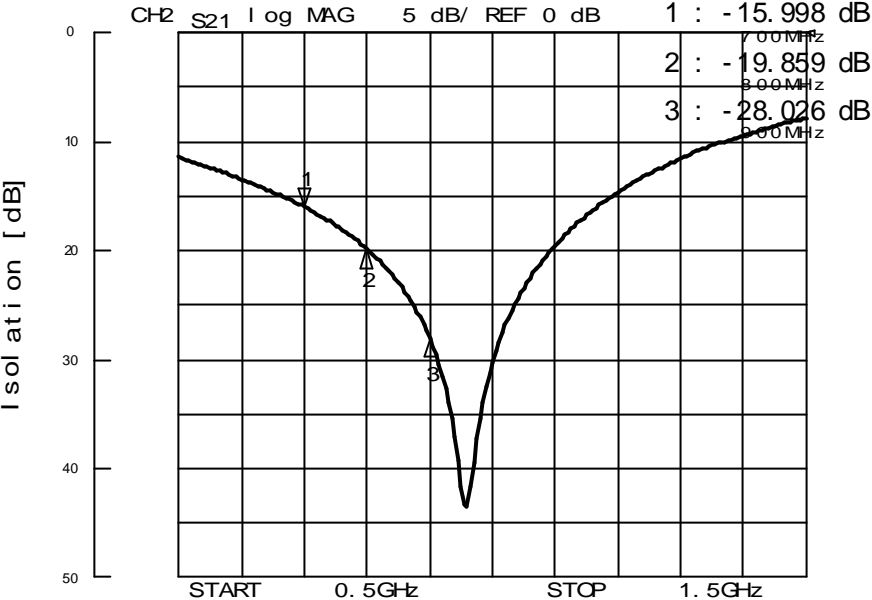
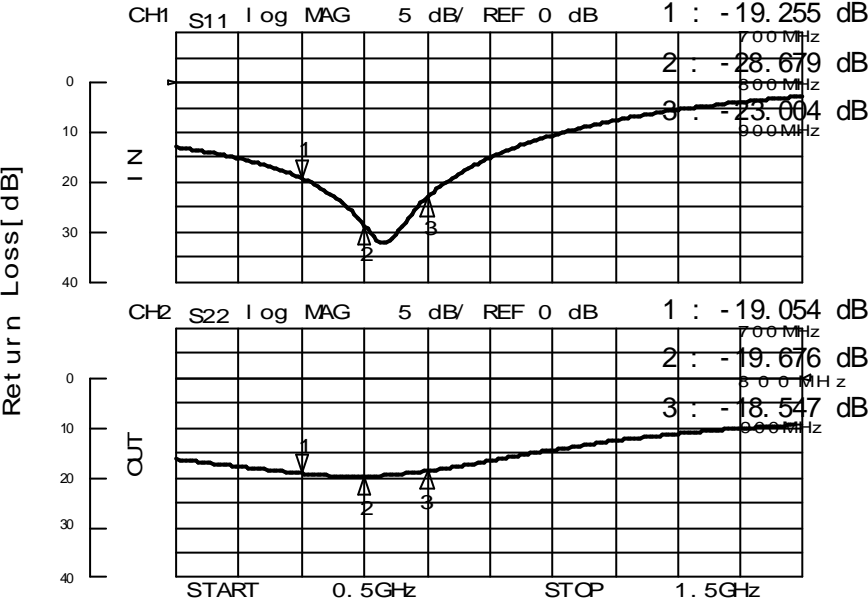
# FOOT PATTERN



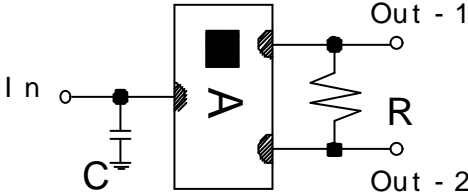
All the technical data and information contained herein are subject to change without notice.

**LH-FSLH-S080C-0406A**

FSLH-S080C Sample Data



700/900 MHz  
Chip Multilayer Splitter/Combiner“FSLH-S080C”



C:3.0pF  
R:100 ohm

LH-FSLH-S080C-0406A