

2012 Size

900/1100 MHz

Chip Multilayer Splitter/Combiner

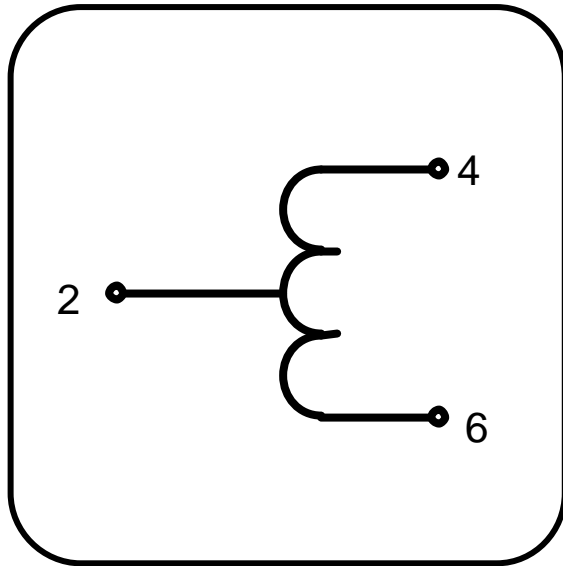
FSLH-S100C

All the technical data and information contained herein are subject to change without notice.

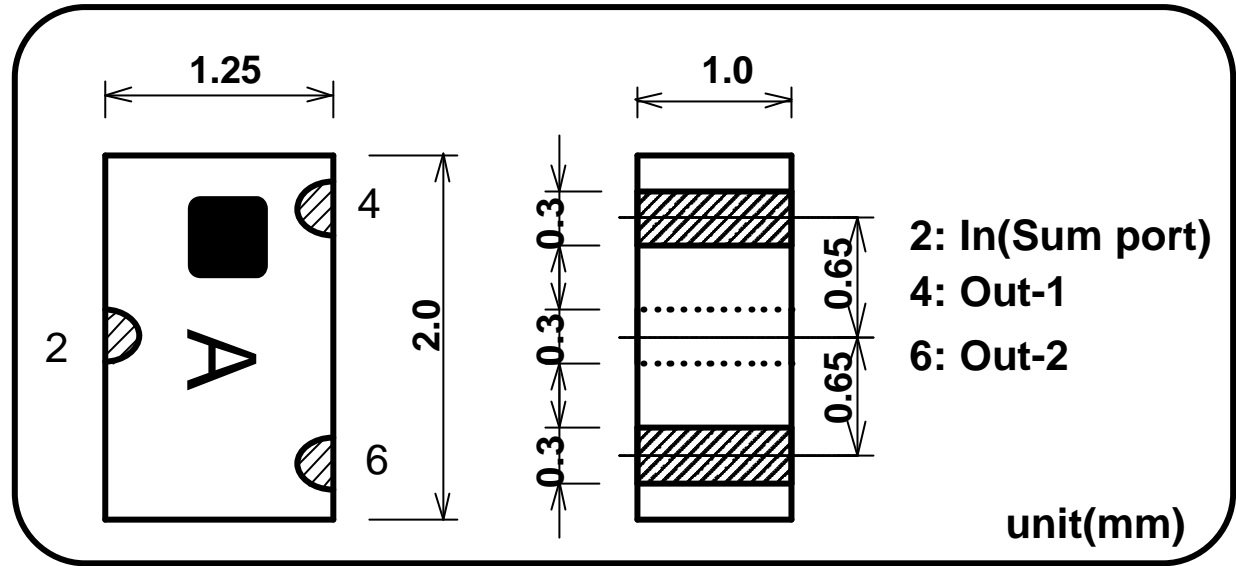


LH-FSLH-S100C-0406A

## Equivalent Circuits



## Shape & Size



## Specifications

Part Name: FSLH-S100C

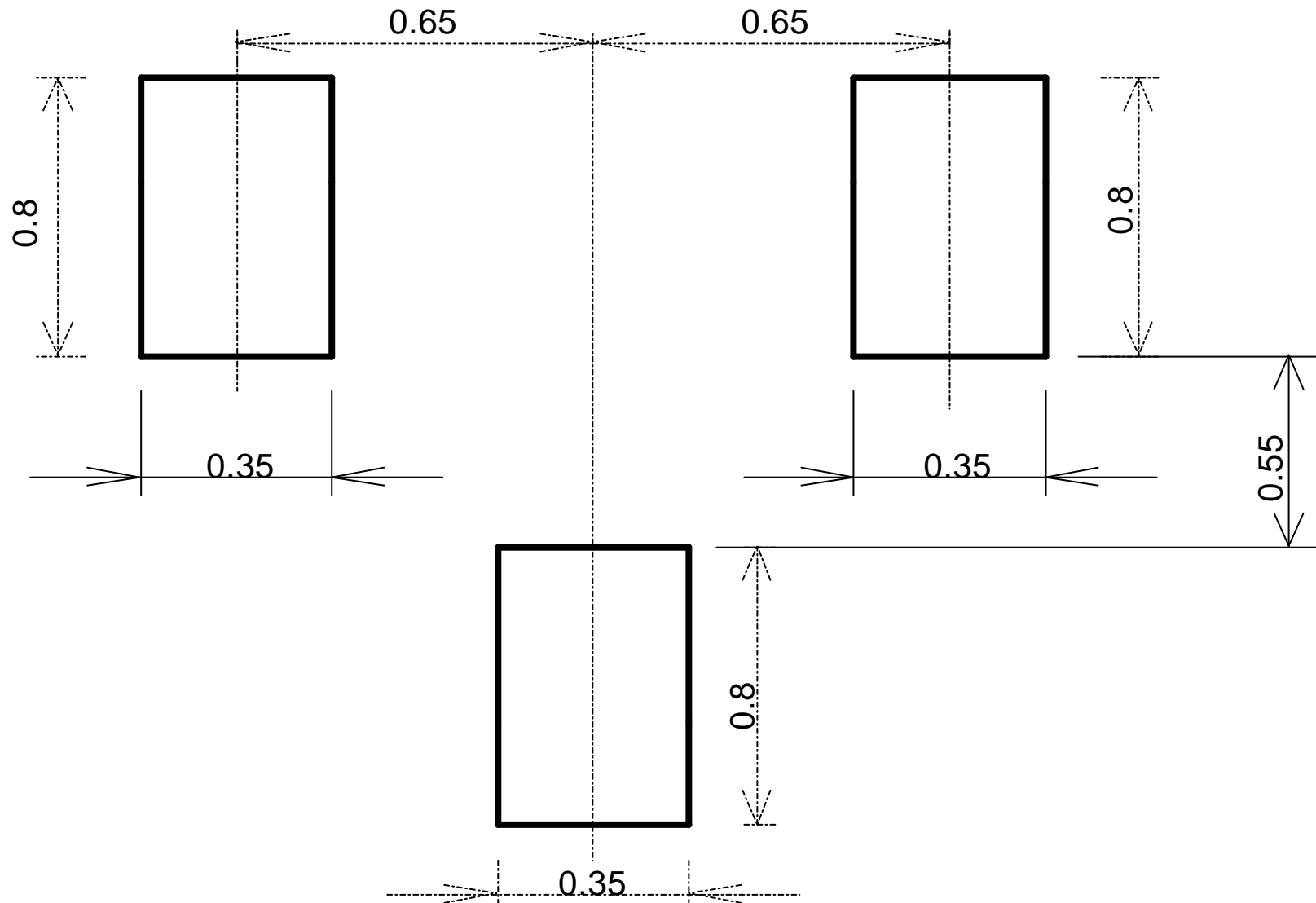
Frequency Range	Matching Capacitor	Insertion Loss *1	Isolation	Return Loss	Handling Power	Temperature Range
900-1100MHz	2.0pF	1dB Max. (0.25dB Typ.)	12dB Min. (23dB Typ.)	10dB Min. (17dB Typ.)	1W Max. (CW)	-35 to +85 deg.C

\*1 Not include splitting loss (3dB)

All the technical data and information contained herein are subject to change without notice.

LH-FSLH-S100C-0406A

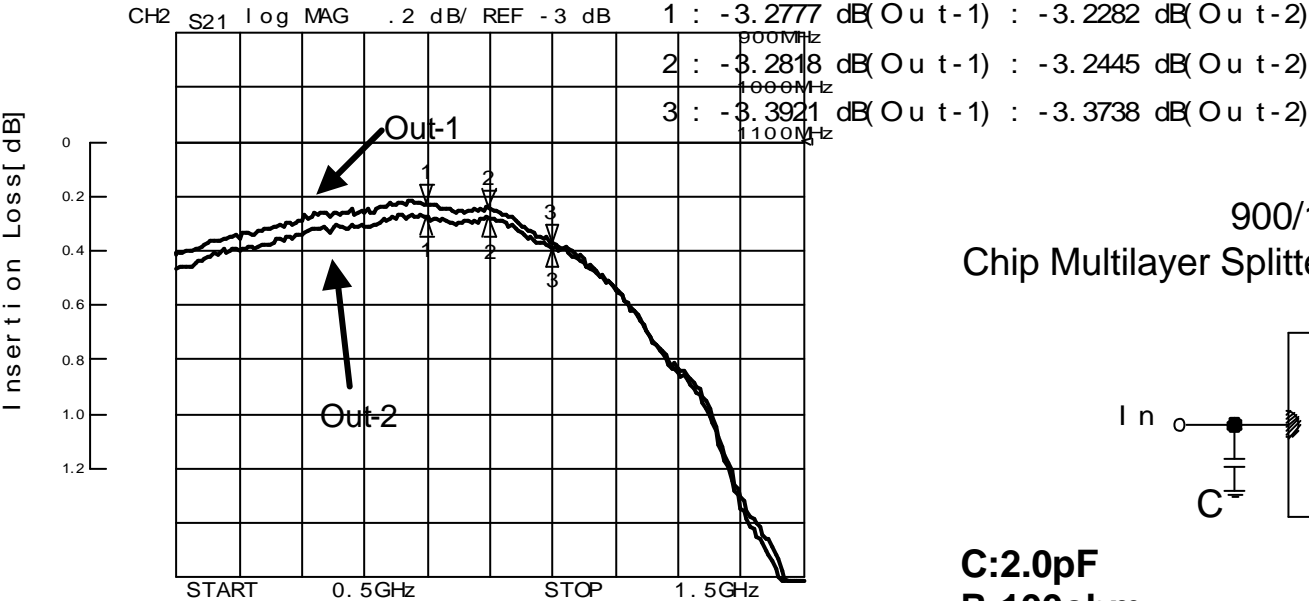
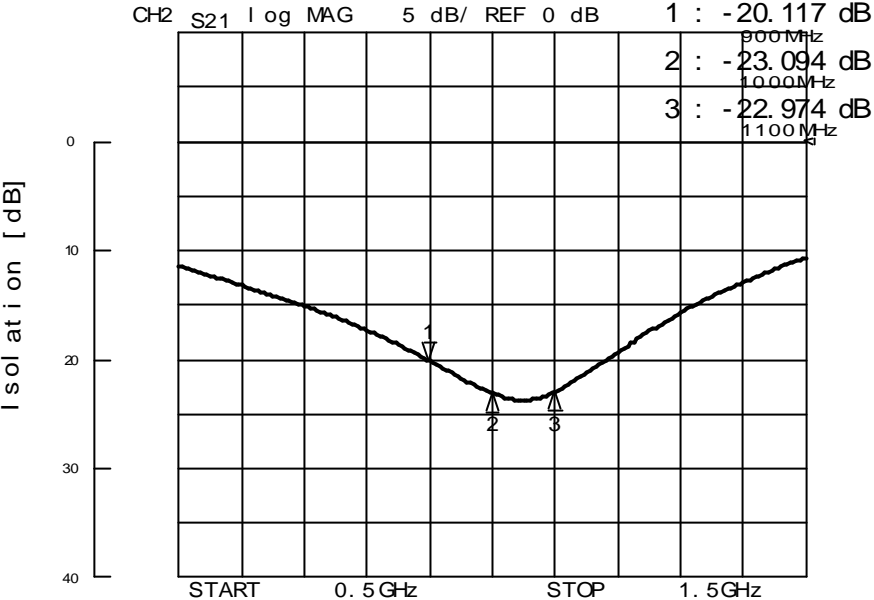
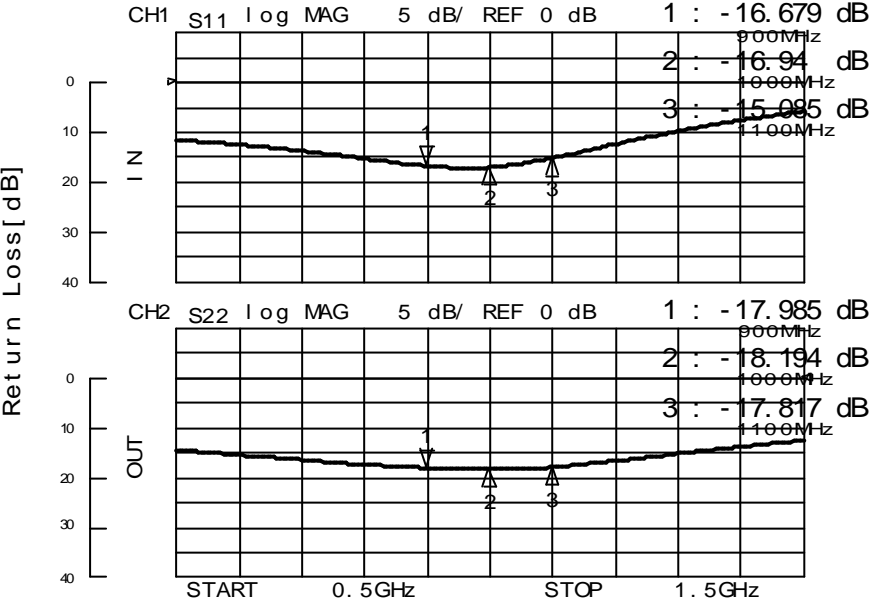
# FOOT PATTERN



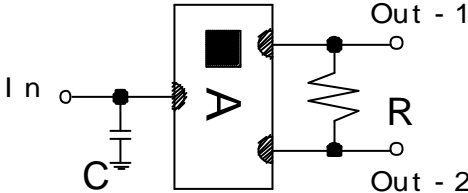
All the technical data and information contained herein are subject to change without notice.

**LH-FSLH-S100C-0406A**

FSLH-S100C Sample Data



900/1100 MHz  
Chip Multilayer Splitter/Combiner“FSLH-S100C”



C:2.0pF  
R:100ohm

LH-FSLH-S100C-0406A