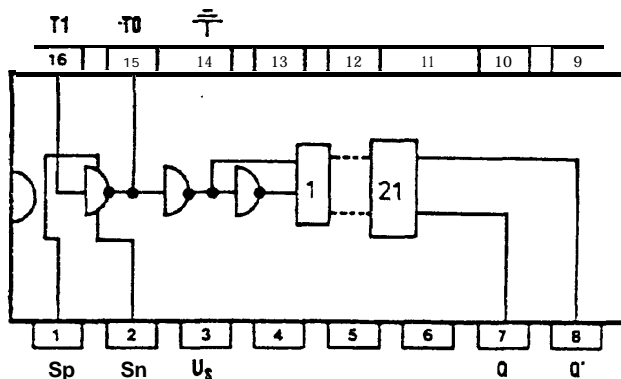


21-stufiger Zähler
21-Stage Counter
Compteur à 21 étages
Contatore a 21 stadi
Contador de 21 pasos

CMOS 4045

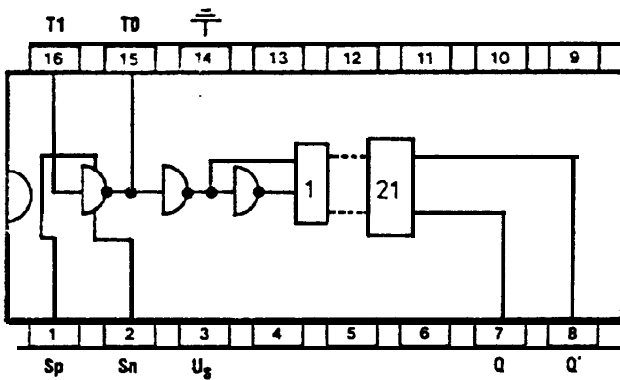
GRENZDATEN

KENNDATEN



TYP Type Type Tipo Tipo	Hersteller Manufact. Fabricants Produttori Fabricantes	B Sec 3	TU		U _{dd}		P _{to} ma:	U _{dd}	U _{IL} §U _{NL}	U _{IH} §U _{NH}	I _{dd} typ	t _{TR}			t _{PD}		
			min max		min max							ns _{typ} (§ns _{max})			ns _{typ} (§ns _{max})		
			°C	°C	V	V	mV	V	V	V	μA	Pin	↓	↑	Pin	↓	↑
4045BDC	FCH	6b	-25	85	-0.5	+18	40c	5 10 15	1.5 3 4	3.5 7 11							
4045BDM	FCH	6b	-55	155	-0.5	+18	40c	5 10 15	1.5 3 4	3.5 7 11							
4045BFC	FCH	16b	-25	85	-0.5	+18	40c	5 10 15	1.5 3 4	3.5 7 11							
4045BFM	FCH	16b	-55	155	-0.5	+18	40c	5 10 15	1.5 3 4	3.5 7 11							
4045BPC	FCH	6a	-25	85	-0.5	+18	40c	5 10 15	1.5 3 4	3.5 7 11							
CD 4045 AD	RCA	6c	-55	155	-0.5	+15	20c	5 10	§1.5 §3	§1.5 §3	0.5 1	Q Q	450 375	450 375	T-Q T-Q	2200 1200	2200 1200
CD 4045 AE	RCA	6a	-25	85	-0.5	+15	20c	5 10	§1.5 §3	§1.5 §3	1 2	Q Q	450 375	450 375	T-Q T-Q	2200 1200	2200 1200
CD 4045 AF	RCA	6b	-55	155	-0.5	+15	200	5 10	§1.5 §3	§1.5 §3	0.5 1	Q Q	450 375	450 375	T-Q T-Q	2200 1200	2200 1200
CD 4045 AH	RCA	ch	-55	155	-0.5	+15		5 10	§1.5 §3	§1.5 §3	0.5 1	Q Q	450 375	450 375	T-Q T-Q	2200 1200	2200 1200
CD 4045 AK	RCA	16b	-55	155	-0.5	+15		5 10	§1.5 §3	§1.5 §3	0.5 1	Q Q	450 375	450 375	T-Q T-Q	2200 1200	2200 1200
CD 4045 BD	RCA	6c	-55	155	-0.5	+20	200	5 10 15	1.5 3 4	3.5 7 11	40n 40n 40n	Q Q Q	25 13 10	25 13 10	T-Q T-Q T-Q	2200 900 650	2200 900 650
CD 4045 BE	RCA	6a	-25	85	-0.5	+20	200	5 10 15	1.5 3 4	3.5 7 11	40n 40n 40n	Q Q Q	25 13 10	25 13 10	T-Q T-Q T-Q	2200 900 650	2200 900 650
CD 4045 BF	RCA	6b	-55	155	-0.5	+20	200	5 10 15	1.5 3 4	3.5 7 11	40n 40n 40n	Q Q Q	25 13 10	25 13 10	T-Q T-Q T-Q	2200 900 650	2200 900 650
CD 4045 BH	RCA	ch	-55	155	-0.5	+20		5 10 15	1.5 3 4	3.5 7 11	40n 40n 40n	Q Q Q	25 13 10	25 13 10	T-Q T-Q T-Q	2200 900 650	2200 900 650

21 -stufiger Zähler
21-Stage Counter
Compteur à 21 étages
Contatore a 21 stadi
Contador de 21 pasos



CMOS 4045			GRENZDATEN			KENN DATEN											
Typ Type Type Tipo Tipo	Hersteller Manufact. Fabricants Produttori Fabricantes	B Sec. 3	T _U min max		U _{dd} min max		P _{tot} max	U _{dd}	U _{IL} U _{NL}	U _{IH} U _{NH}	I _{dd} typ	t _{TR} ns _{typ} (S _{ns} max)			t _{PD} ns _{typ} (S _{ns} max)		
			°C	°C	V	V	mW	V	V	V	μA	Pin	↓	↑	Pin	↓	↑
CD 4045 BK	SCA	16b	-55	155	-0.5	+20		5	1.5	3.5	40n	Q	25	25	T-Q	2200	2200
								10	3	7	40n	Q	13	13	T-Q	900	900
								15	4	11	40n	Q	10	10	T-Q	650	650
HCC 4045 BD	SGS	6c	-55	155	-0.5	+20	200	5	1.5	3.5	40n	Q	25	25	T-Q	2200	2200
								10	3	7	40n	Q	13	13	T-Q	900	900
								15	4	11	40n	Q	10	10	T-Q	650	650
HCC 4045 BF	SGS	6b	-55	155	-0.5	+20	200	5	1.5	3.5	40n	Q	25	25	T-Q	2200	2200
								10	3	7	40n	Q	13	13	T-Q	900	900
								15	4	11	40n	Q	10	10	T-Q	650	650
HCC 4045 BK	SGS	16b	-55	155	-0.5	+20	200	5	1.5	3.5	40n	Q	25	25	T-Q	2200	2200
								10	3	7	40n	Q	13	13	T-Q	900	900
								15	4	11	40n	Q	10	10	T-Q	650	650
HCF 4045 BE	SGS	6a	-25	85	-0.5	+20	200	5	1.5	3.5	40n	Q	25	25	T-Q	2200	2200
								10	3	7	40n	Q	13	13	T-Q	900	900
								15	4	11	40n	Q	10	10	T-Q	650	650
HCF 4045 BF	SGS	6b	-25	85	-0.5	+20	200	5	1.5	3.5	40n	Q	25	25	T-Q	2200	2200
								10	3	7	40n	Q	13	13	T-Q	900	900
								15	4	17	40n	Q	10	10	T-Q	650	650

4045

21-bit asynchronous binary counter with oscillator and reset input.

Only two 3% duty cycle Outputs (180° out of phase) from the last counter stage

are available. Can be used to generate a 1Hz clock signal using a 2.097152MHz

crystal. P and N MOSFET source connections from the oscillator inverter are

brought out of the package to allow the use of source resistors, but usually

pS=VCC and nS=GND.

pS	1	+	---	+	16	X1
nS	2				15	xO
vcc	3				14	GND
	4				13	
	5	4045			12	
	6				11	
QA	7				10	
QB	8				9	

[This information is part of the GIICM]