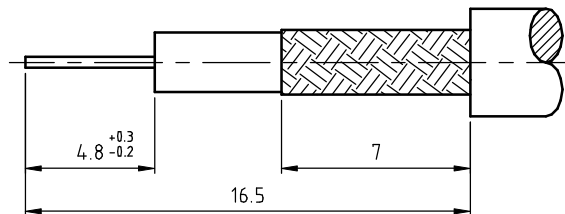
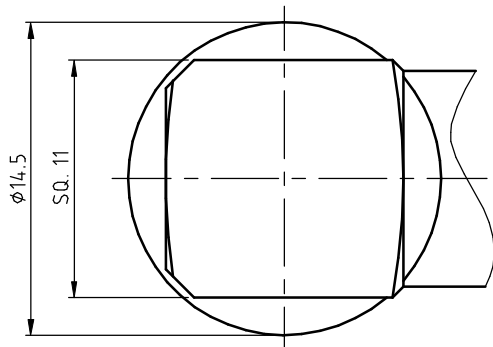
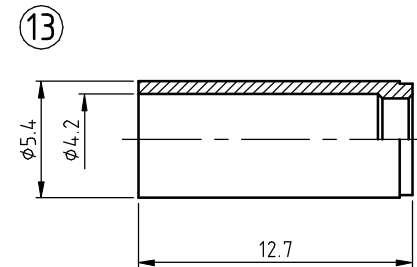
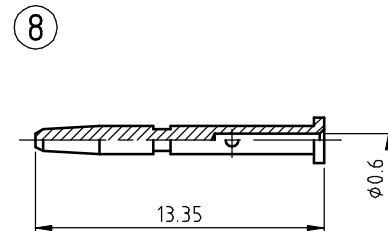
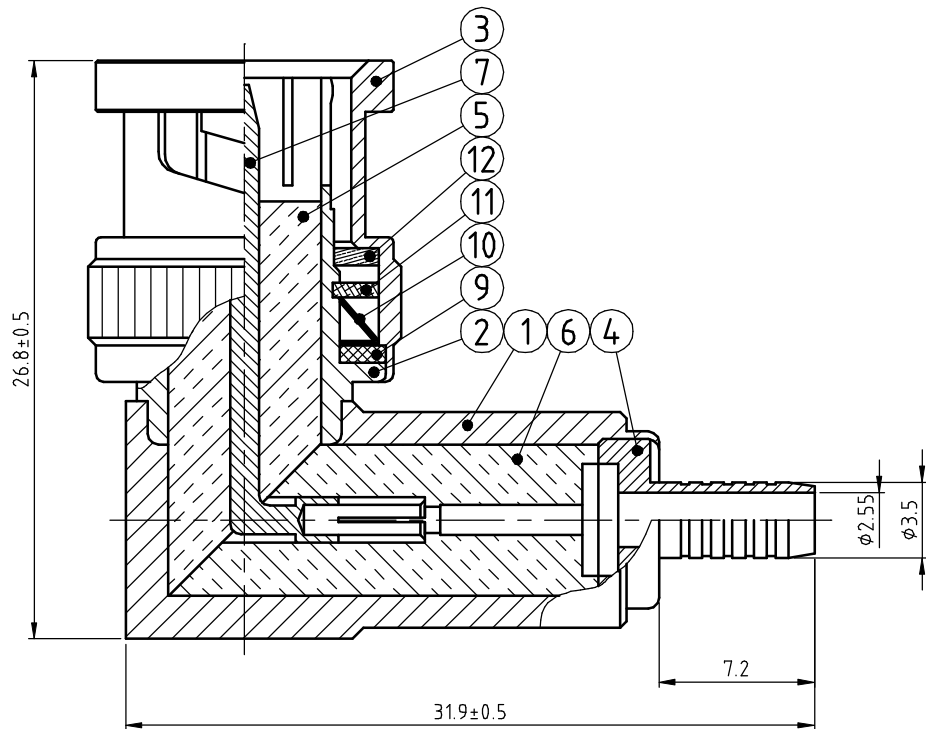


Cannon P/N	PACKAGE	REVISIONS				
		SYS	ECN No.	DESCRIPTION	DATE	APPROVED
167000-1410	SINGLE CONN.	THIS IS CAD DRAWING, DOES NOT REVISE MANUAL !!				
167000-1416	BULK PACK	REF.	DESCRIPTION	MATERIAL	FINISH	
REFER DOC# PSG99330 FOR ASSEMBLY INSTRUCTION		1	MAIN BODY	BRASS	NICKEL	
		2	BODY	BRASS	NICKEL	
		3	SHELL	BRASS	NICKEL	
		4	CHASSIS	BRASS	NICKEL	
		5	INSULATOR	TEFLON		
		6	INSULATOR	TEFLON		
		7	CONTACT PIN	BERYLLIUM COPPER	GOLD	
		8	CONTACT PIN	BRASS	GOLD	
		9	WASHER	BRASS	NICKEL	
		10	SPRING	SK-5	NICKEL	
		11	WASHER	BRASS	NICKEL	
		12	GASKET	RUBBER		
		13	FERRULE	BRASS	NICKEL	



RECOMMENDED CABLE STRIPPING DIM'S

TOLERANCE m/m		DRAWN	DATE	PART NO.	
.000	±0.10	CHECKED	DATE	SEE TABLE	
.00	±0.15	APPROVED	DATE		
.0	±0.25			UNIT MM	
0.	±0.5				
ANGLE	±1.0°			SCALE N.A.	
UNLESS OTHERWISE SPECIFIED					
		SHEET	1 OF 1	DRAWING NO. RFMW-PSG99300-00	
				REV A	