





A

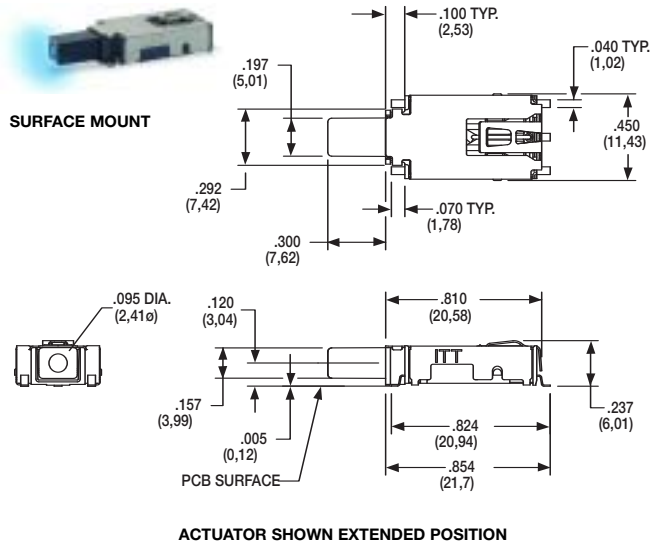
Pushbutton

# C&K ELUM™ Series

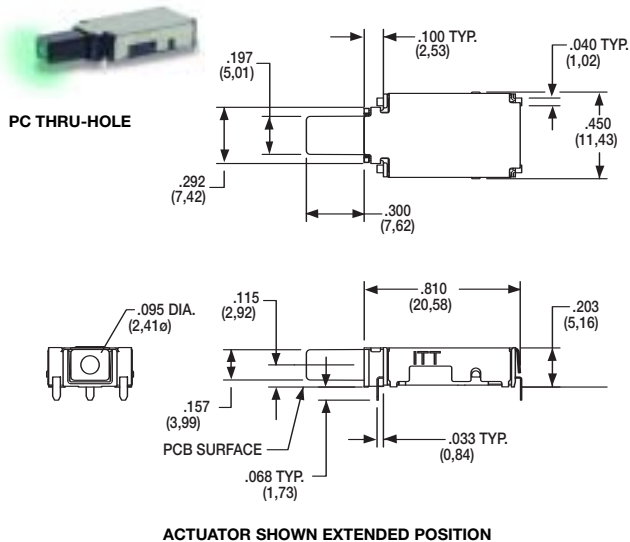
## Right Angle Illuminated Latching Pushbutton

### STANDARD OPTIONS

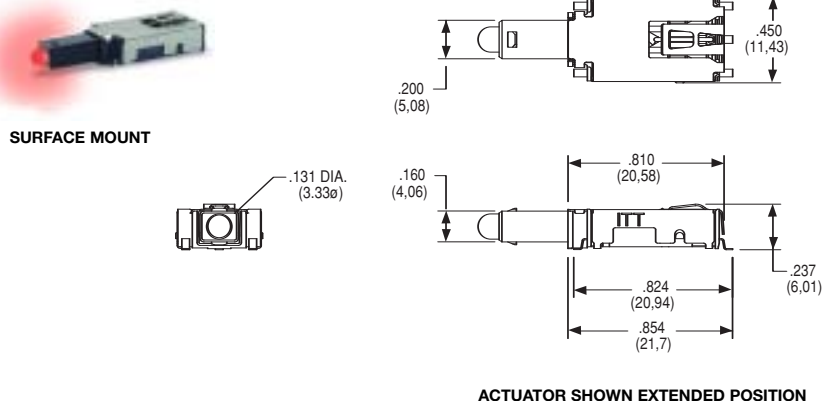
#### ELUMEESAQ7C12



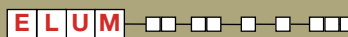
#### ELUMOATHQ6C12



#### ELUMEESAQ3C22

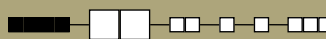


### DESIGNATION



**ELUM** ELUM SERIES, Illuminated Latching Pushbutton

### SWITCH FUNCTION



		POSITION 1	POSITION 2			SCHEMATIC
OPTION CODE	NO. OF POLES	SWITCH FUNCTION	CONNECTED TERMINALS	SWITCH FUNCTION	CONNECTED TERMINALS	<p>+ Anode - Cathode</p>
<b>OA</b>	SP Momentary	ON	3 - 4	ON (Mom.)	3 - 2	
<b>EE</b>	SP Latching (Push-Push)	ON	3 - 4	ON	3 - 2	

For SPST N.O. function, only terminals 3 & 2 are used.  
 For SPST N.C. function, only terminals 3 & 4 are used.  
 Circuit: Make before break

LED pins 1 & 5 are independent of switch function.



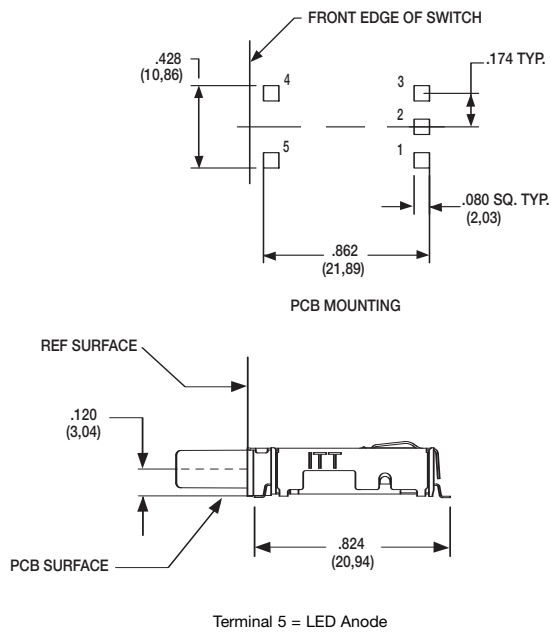
Dimensions are shown: Inches (mm)  
 Specifications and dimensions subject to change

[www.ittcannon.com](http://www.ittcannon.com)

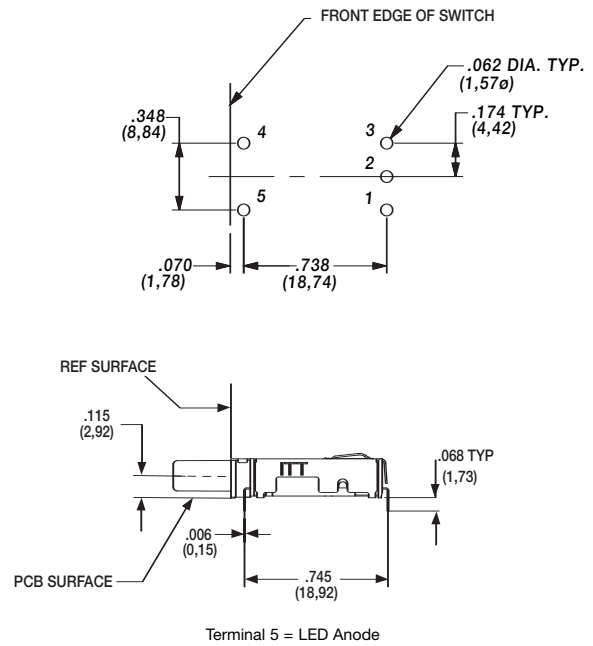
# C&K ELUM™ Series Right Angle Illuminated Latching Pushbutton



## SA RIGHT ANGLE, SURFACE MOUNT



## TH RIGHT ANGLE, PC THRU-HOLE



## CONTACT MATERIAL

OPTION CODE	CONTACT MATERIAL	TERMINAL PLATING	RATINGS
<b>Q</b>	SILVER WITH GOLD FLASH	SILVER WITH GOLD FLASH	250 mA

FIXED CONTACTS AND TERMINALS: Stainless steel, silver plated with gold flash

MOVABLE CONTACTS: Copper alloy, silver plated with gold flash

**NOTE:** Any models supplied with Q, B or G contact material are RoHS compliant.  
For the latest information regarding RoHS compliance, please go to: [www.ittcannon.com/rohs](http://www.ittcannon.com/rohs).

## ILLUMINATION

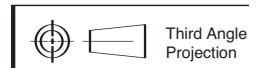
OPTION CODE	ILLUMINATION TYPE	TYPICAL INTENSITY* MIN	TYPICAL INTENSITY* MAX	PEAK WAVELENGTH	VIEWING ANGLE
		(mcd)		(nm)	
<b>(NONE)</b>	Model without illumination	N/A		N/A	N/A
<b>1</b>	LED Super White	4,000	5,000	N/A	30°
<b>3</b>	LED Red	4	8	700	60°
<b>5</b>	LED Amber	35	50	610	60°
<b>6</b>	LED Green	35	50	565	60°
<b>7</b>	LED Super Blue	800	1,500	470	22°
<b>8</b>	LED Bi-Color – Amber (Green)	10	10	585/565	60°
<b>9</b>	LED Bi-Color – Green (Red)	10	20	565/635	60°

\*LED FORWARD CURRENT: 20 mA

LED FORWARD VOLTAGE: 2.0 V TYP.

LED REVERSE VOLTAGE: 5.0 V MAX

\* For information on specific and custom LED, please contact Customer Service.



Dimensions are shown: Inches (mm)  
Specifications and dimensions subject to change





A

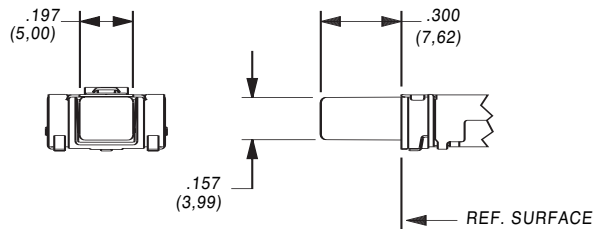
Pushbutton

# C&K ELUM™ Series Right Angle Illuminated Latching Pushbutton

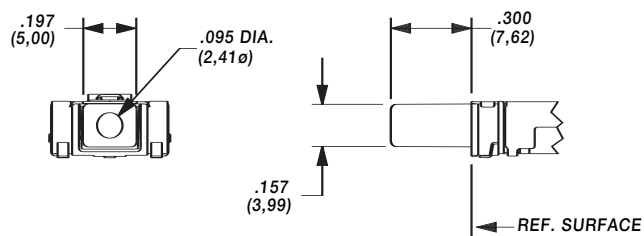
## ACTUATOR STYLE\*



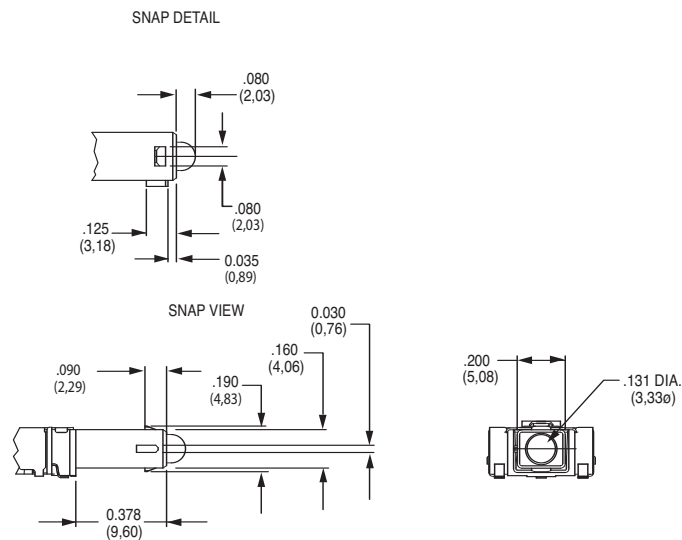
### C02 BLACK WITHOUT WINDOW



### C12 BLACK WITH WINDOW

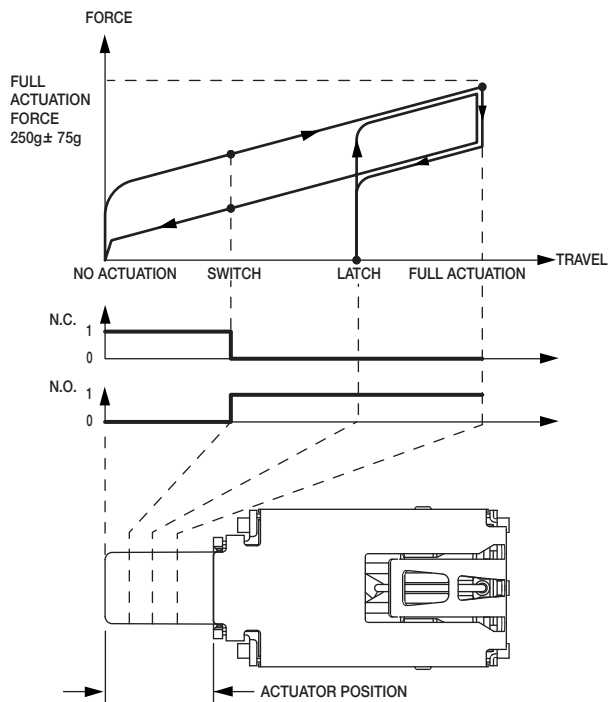


### C22 BLACK WITH WINDOW AND SNAP FEATURE TO ACCEPT CUSTOM CAP



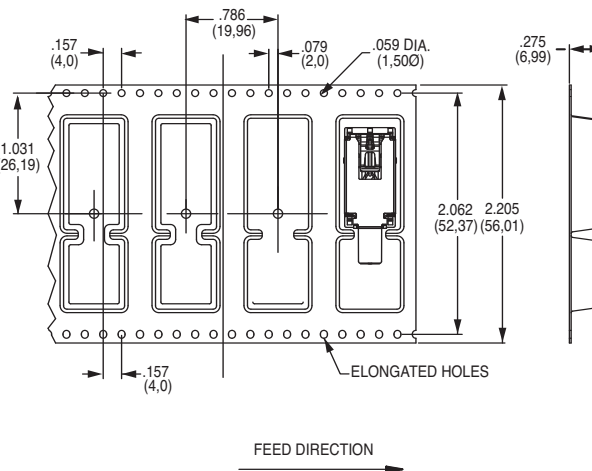
\* Custom actuators available, please contact Customer Service.

## FORCE TRAVEL DIAGRAM



	ACTUATOR POSITION	
NO ACTUATION	.300 ± .020	7,6 ± 0.5mm
SWITCH	.233 ± .020	5,9 ± 0.5mm
LATCH	.169 ± .020	4,3 ± 0.5mm
FULL ACTUATION	.100 ± .020	2,5 ± 0.5mm

## TAPE & REEL



Dimensions are shown: Inches (mm)  
Specifications and dimensions subject to change

www.ittcannon.com