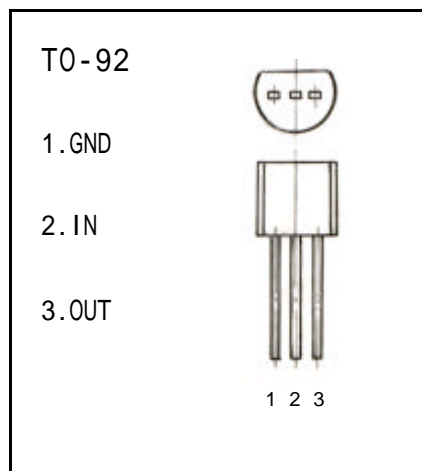


**TO-92 Encapsulate Three-terminal voltage regulator****CJ79L08** Three-terminal negative voltage regulator**FEATURES**

Maximum Output current

 I_{OM} : 0.1A

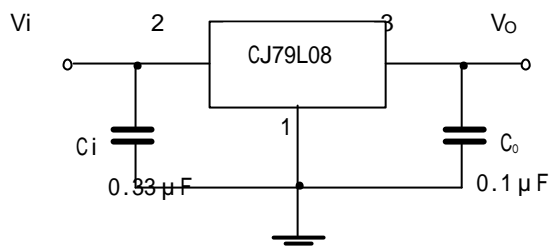
Output voltage

 V_O : -8 V**ABSOLUTE MAXIMUM RATINGS (Operating temperature range applies unless otherwise specified)**

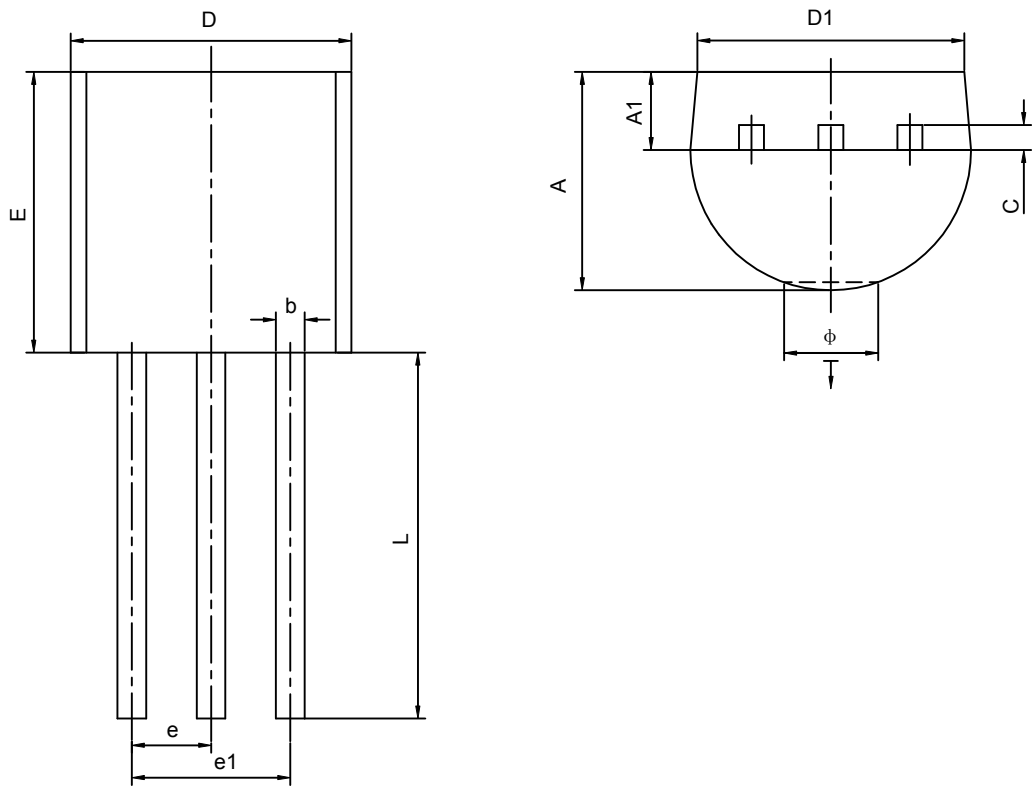
Parameter	Symbol	Value	Units
Input Voltage	V_i	-30	V
Operating Junction Temperature Range	T_{OPR}	0—+125	
Storage Temperature Range	T_{STG}	-55—+150	

ELECTRICAL CHARACTERISTICS($V_i = -14V$, $I_o = 40mA$, $0 < T_j < 125$, $C_1 = 0.33 \mu F$, $C_o = 0.1 \mu F$, unless otherwise specified)

Parameter	Symbol	Test conditions	MIN	TYP	MAX	UNIT
Output voltage	V_O	$V_{IN} = -14V$, $I_o = 40mA$	-7.7	-8.0	-8.3	V
Line Regulation	$V_O - V_{IN}$	$V_{IN} = -10.5 \sim -23V$, $I_o = 40mA$		42	200	mV
Load Regulation	$V_O - I_o$	$V_{IN} = -14V$, $I_o = 1 \sim 100mA$		30	100	mV
Quiescent Current	I_Q	$V_{IN} = -14V$, $I_o = 40mA$			6.0	mA
Ripple Rejection	RR	$V_{IN} = -11V \sim -21V$, $I_o = 40mA$, $e_{iN} = 1V_{P-P}$, $f = 120Hz$	37	46		dB
Output Noise Voltage	V_{NO}	$V_{IN} = -14V$, $f = 10Hz \sim 100KH$, $I_o = 40mA$		54		μV

TYPICAL APPLICATION

TO-92 PACKAGE OUTLINE DIMENSIONS



Symbol	Dimensions In Millimeters		Dimensions In Inches	
	Min	Max	Min	Max
A	3.300	3.700	0.130	0.146
A1	1.100	1.400	0.043	0.055
b	0.380	0.550	0.015	0.022
c	0.360	0.510	0.014	0.020
D	4.400	4.700	0.173	0.185
D1	3.430		0.135	
E	4.300	4.700	0.169	0.185
e	1.270TYP		0.050TYP	
e1	2.440	2.640	0.096	0.104
L	14.100	14.500	0.555	0.571
Ö		1.600		0.063
↓	0.000	0.380	0.000	0.015