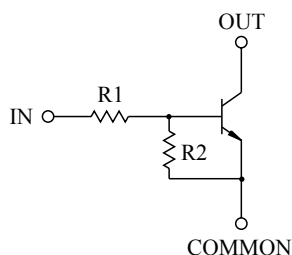


SWITCHING APPLICATION.
INTERFACE CIRCUIT AND DRIVER CIRCUIT APPLICATION.

FEATURES

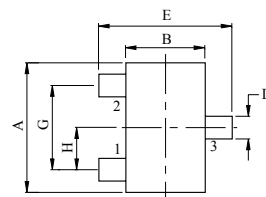
- With Built-in Bias Resistors.
- Simplify Circuit Design.
- Reduce a Quantity of Parts and Manufacturing Process.
- High Packing Density.

EQUIVALENT CIRCUIT

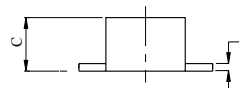


BIAS RESISTOR VALUES

TYPE NO.	R1(k Ω)	R2(k Ω)
KRC401E	4.7	4.7
KRC402E	10	10
KRC403E	22	22
KRC404E	47	47
KRC405E	2.2	47
KRC406E	4.7	47



DIM	MILLIMETERS
A	1.60±0.10
B	0.85±0.10
C	0.70±0.10
D	0.27+0.10/-0.05
E	1.60±0.10
G	1.00±0.10
H	0.50
J	0.13±0.05



1. COMMON (EMITTER)
2. IN (BASE)
3. OUT (COLLECTOR)

ESM

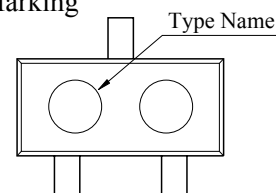
MAXIMUM RATING (Ta=25℃)

CHARACTERISTIC		SYMBOL	RATING	UNIT
Output Voltage	KRC401E ~ 406E	V _O	50	V
Input Voltage	KRC401E	V _I	20, -10	V
	KRC402E		30, -10	
	KRC403E		40, -10	
	KRC404E		40, -10	
	KRC405E		12, -5	
	KRC406E		20, -5	
Output Current	KRC401E ~ 406E	I _O	100	mA
Power Dissipation		P _D	100	mW
Junction Temperature		T _j	150	℃
Storage Temperature Range		T _{stg}	-55 ~ 150	℃

MARK SPEC

TYPE	KRC401E	KRC402E	KRC403E	KRC404E	KRC405E	KRC406E
MARK	NA	NB	NC	ND	NE	NF

Marking



KRC401E~KRC406E

ELECTRICAL CHARACTERISTICS (Ta=25℃)

CHARACTERISTIC		SYMBOL	TEST CONDITION	MIN.	TYP.	MAX.	UNIT
Output Cut-off Current	KRC401E ~ 406E	$I_{O(OFF)}$	$V_O=50V, V_I=0$	-	-	500	nA
DC Current Gain	KRC401E	G_I	$V_O=5V, I_O=10mA$	30	55	-	
	KRC402E			50	80	-	
	KRC403E			70	120	-	
	KRC404E			80	200	-	
	KRC405E			80	200	-	
	KRC406E			80	200	-	
Output Voltage	KRC401E ~ 406E	$V_{O(ON)}$	$I_O=10mA, I_I=0.5mA$	-	0.1	0.3	V
Input Voltage (ON)	KRC401E	$V_{I(ON)}$	$V_O=0.2V, I_O=5mA$	-	1.5	2.0	V
	KRC402E			-	1.8	2.4	
	KRC403E			-	2.1	3.0	
	KRC404E			-	2.8	5.0	
	KRC405E			-	0.8	1.1	
	KRC406E			-	0.9	1.3	
Input Voltage (OFF)	KRC401E ~ 404E	$V_{I(OFF)}$	$V_O=5V, I_O=0.1mA$	1.0	1.2	-	V
	KRC405E ~ 406E			0.5	0.65	-	
Transition Frequency	KRC401E ~ 406E	f_T^*	$V_O=10V, I_O=5mA$	-	200	-	MHz
Input Current	KRC401E	I_I	$V_I=5V$	-	-	1.8	mA
	KRC402E			-	-	0.88	
	KRC403E			-	-	0.36	
	KRC404E			-	-	0.18	
	KRC405E			-	-	3.6	
	KRC406E			-	-	1.8	

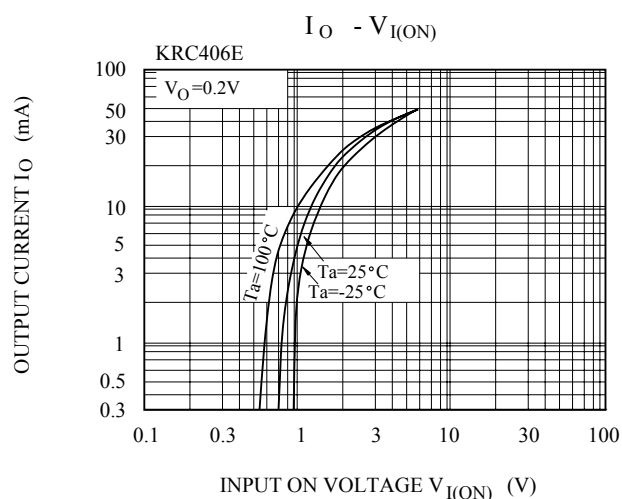
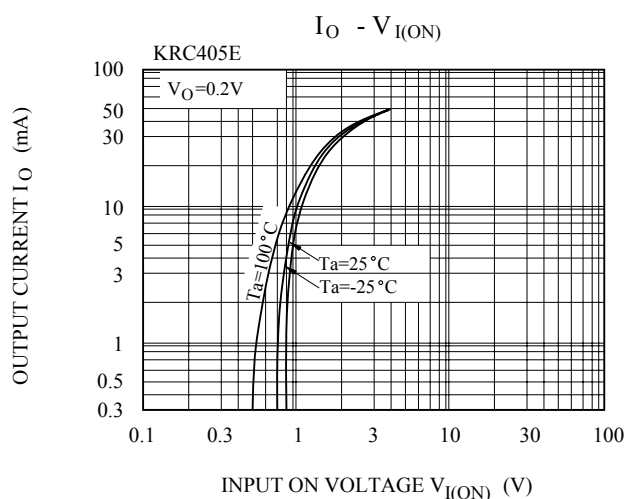
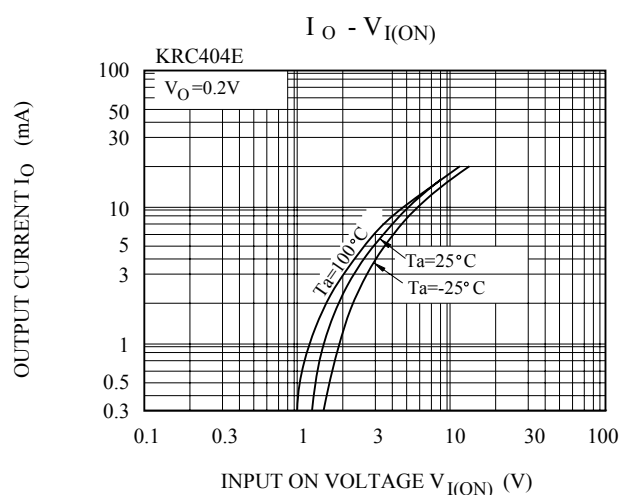
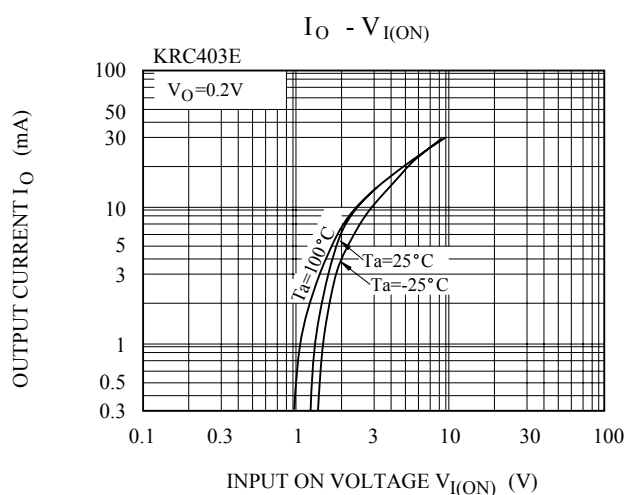
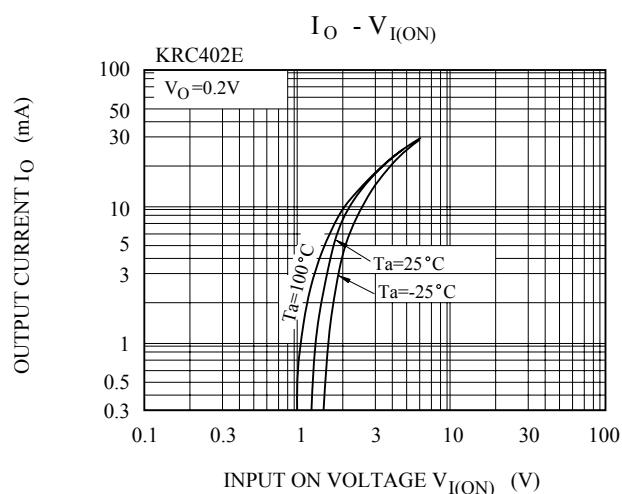
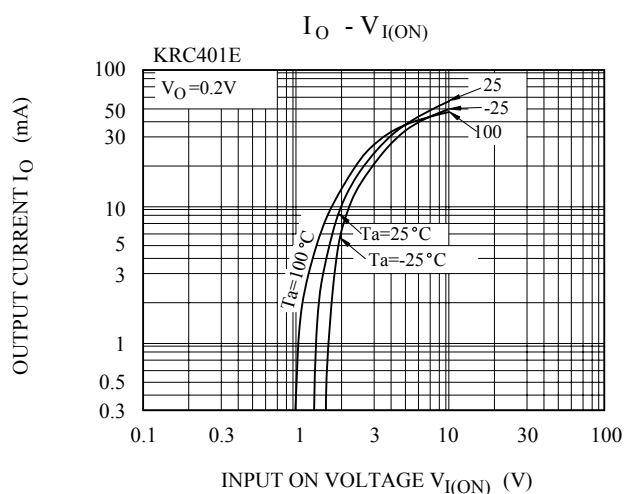
Note : * Characteristic of Transistor Only.

KRC401E~KRC406E

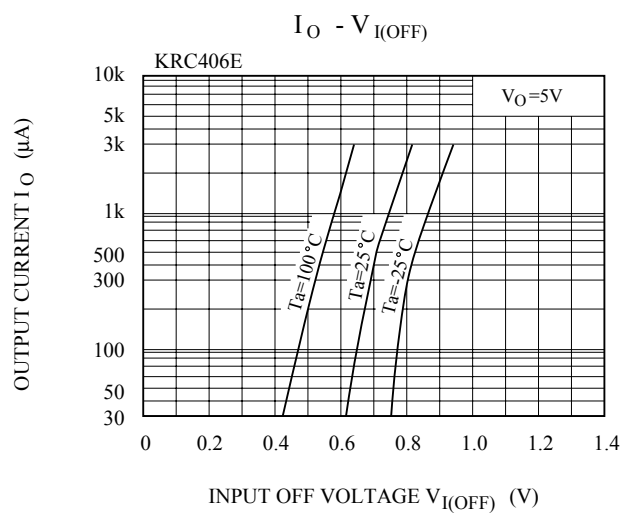
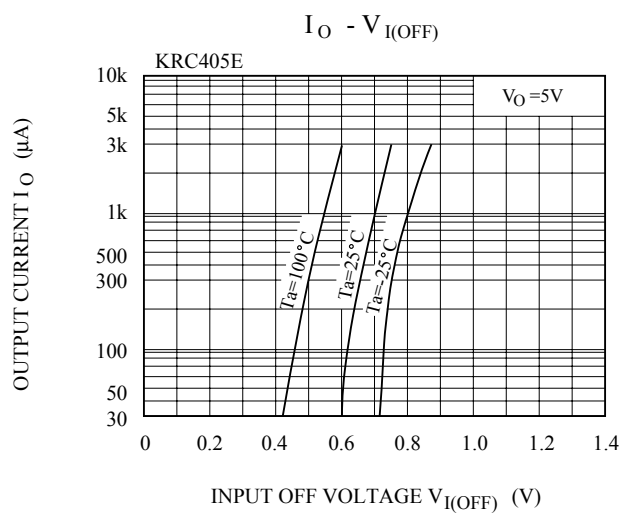
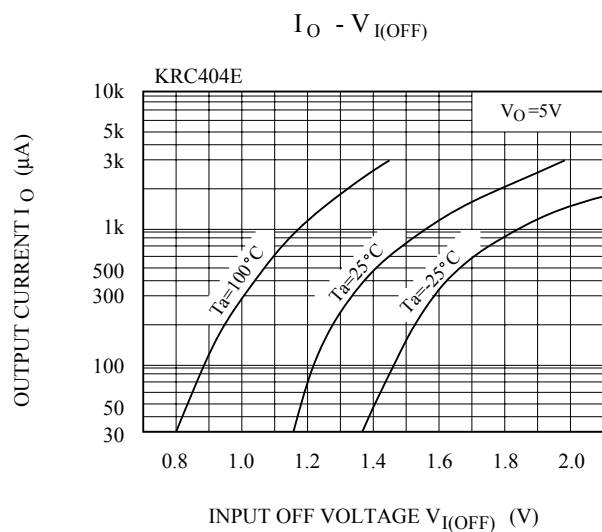
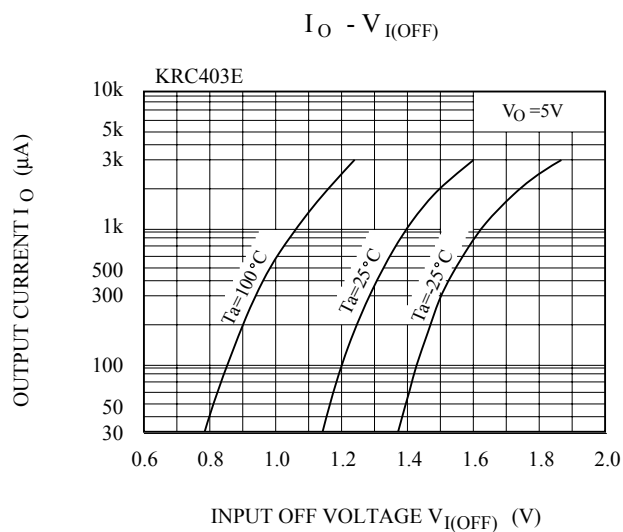
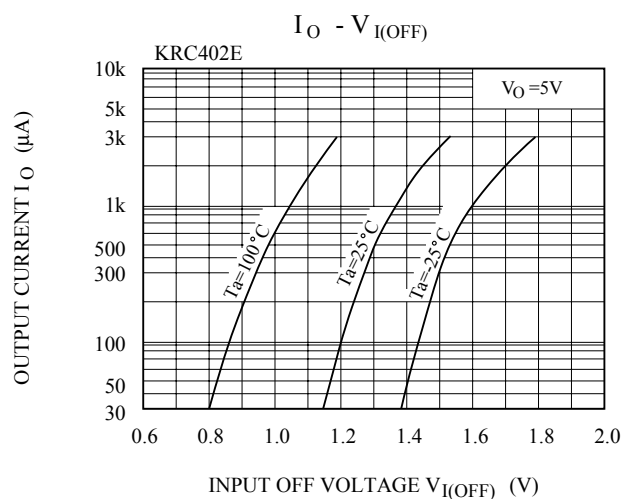
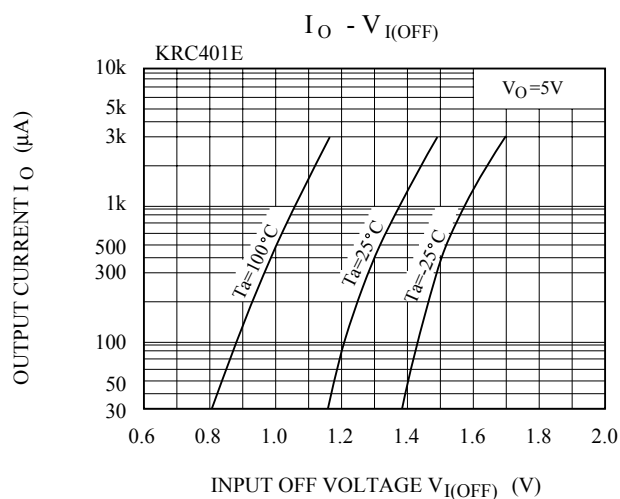
ELECTRICAL CHARACTERISTICS (Ta=25℃)

CHARACTERISTIC			SYMBOL	TEST CONDITION	MIN.	TYP.	MAX.	UNIT
Switching Time	Rise Time	KRC401E	t _r	V _O =5V V _{IN} =5V R _L =1k Ω	-	0.03	-	μS
		KRC402E			-	0.05	-	
		KRC403E			-	0.12	-	
		KRC404E			-	0.22	-	
		KRC405E			-	0.01	-	
		KRC406E			-	0.03	-	
	Storage Time	KRC401E	t _{stg}		-	2.0	-	
		KRC402E			-	2.0	-	
		KRC403E			-	2.0	-	
		KRC404E			-	2.0	-	
		KRC405E			-	2.0	-	
		KRC406E			-	2.0	-	
	Fall Time	KRC401E	t _f		-	0.12	-	
		KRC402E			-	0.36	-	
		KRC403E			-	0.35	-	
		KRC404E			-	0.6	-	
		KRC405E			-	0.1	-	
		KRC406E			-	0.19	-	

KRC401E~KRC406E



KRC401E~KRC406E



KRC401E~KRC406E

