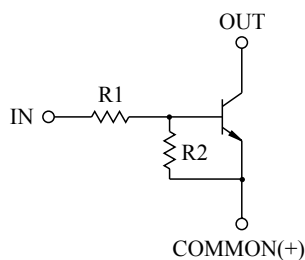


SWITCHING APPLICATION.
INTERFACE CIRCUIT AND DRIVER CIRCUIT APPLICATION.

FEATURES

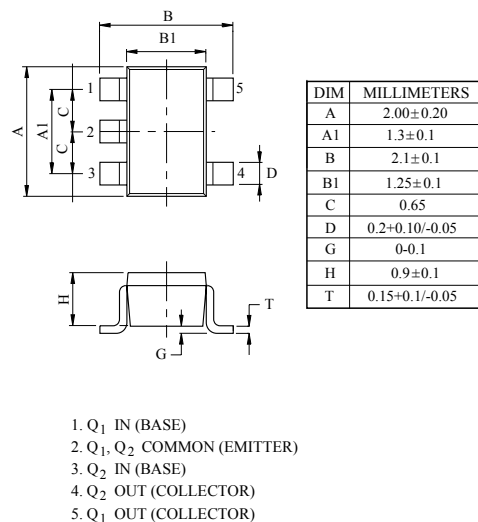
- With Built-in Bias Resistors.
- Simplify Circuit Design.
- Reduce a Quantity of Parts and Manufacturing Process.
- High Packing Density.

EQUIVALENT CIRCUIT



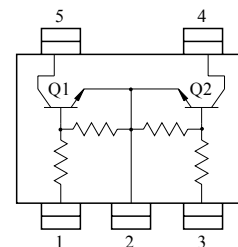
BIAS RESISTOR VALUES

TYPE NO.	R1(k Ω)	R2(k Ω)
KRC651U	4.7	4.7
KRC652U	10	10
KRC653U	22	22
KRC654U	47	47
KRC655U	2.2	47
KRC656U	4.7	47



USV

EQUIVALENT CIRCUIT (TOP VIEW)



MAXIMUM RATING (Ta=25℃)

CHARACTERISTIC		SYMBOL	RATING	UNIT
Output Voltage	KRC651U ~ 656U	V _O	50	V
Input Voltage	KRC651U	V _I	20, -10	V
	KRC652U		30, -10	
	KRC653U		40, -10	
	KRC654U		40, -10	
	KRC655U		12, -5	
	KRC656U		20, -5	
Output Current	KRC651U ~ 656U	I _O	100	mA
Power Dissipation		P _D *	200	mW
Junction Temperature		T _j	150	℃
Storage Temperature Range		T _{stg}	-55 ~ 150	℃

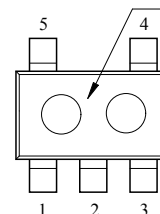
* Total Rating.

Marking

Type Name

MARK SPEC

TYPE	KRC651U	KRC652U	KRC653U	KRC654U	KRC655U	KRC656U
MARK	NA	NB	NC	ND	NE	NF



KRC651U~KRC656U

ELECTRICAL CHARACTERISTICS (Ta=25℃)

CHARACTERISTIC		SYMBOL	TEST CONDITION	MIN.	TYP.	MAX.	UNIT
Output Cut-off Current	KRC651U ~ 656U	$I_{O(OFF)}$	$V_O=50V, V_I=0$	-	-	500	nA
DC Current Gain	KRC651U	G_I	$V_O=5V, I_O=10mA$	30	55	-	
	KRC652U			50	80	-	
	KRC653U			70	120	-	
	KRC654U			80	200	-	
	KRC655U			80	200	-	
	KRC656U			80	200	-	
Output Voltage	KRC651U ~ 656U	$V_{O(ON)}$	$I_O=10mA, I_I=0.5mA$	-	0.1	0.3	V
Input Voltage (ON)	KRC651U	$V_{I(ON)}$	$V_O=0.2V, I_O=5mA$	-	1.5	2.0	V
	KRC652U			-	1.8	2.4	
	KRC653U			-	2.1	3.0	
	KRC654U			-	2.8	5.0	
	KRC655U			-	0.8	1.1	
	KRC656U			-	0.9	1.3	
Input Voltage (OFF)	KRC651U ~ 654U	$V_{I(OFF)}$	$V_O=5V, I_O=0.1mA$	1.0	1.2	-	V
	KRC655U ~ 656U			0.5	0.65	-	
Transition Frequency	KRC651U ~ 656U	f_T^*	$V_O=10V, I_O=5mA$	-	200	-	MHz
Input Current	KRC651U	I_I	$V_I=5V$	-	-	1.8	mA
	KRC652U			-	-	0.88	
	KRC653U			-	-	0.36	
	KRC654U			-	-	0.18	
	KRC655U			-	-	3.6	
	KRC656U			-	-	1.8	

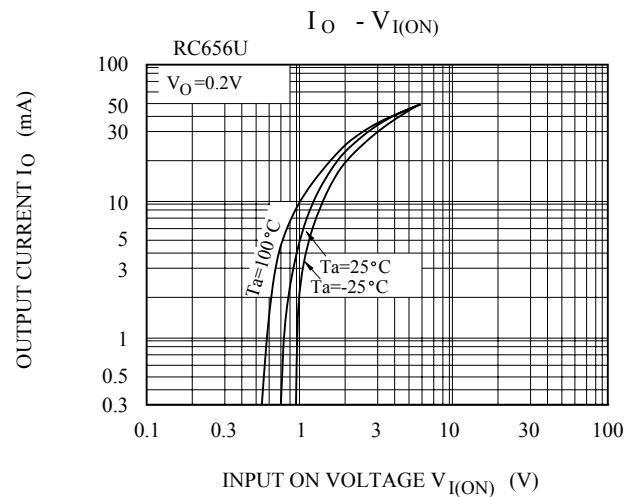
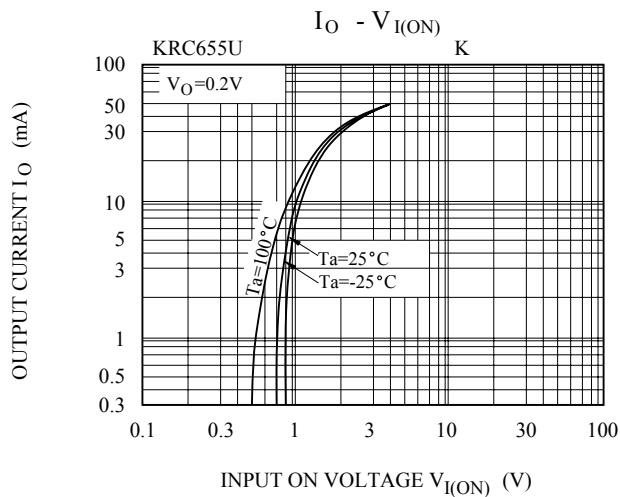
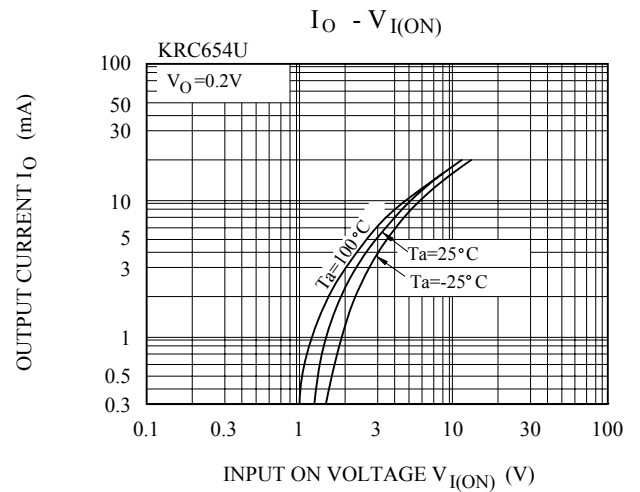
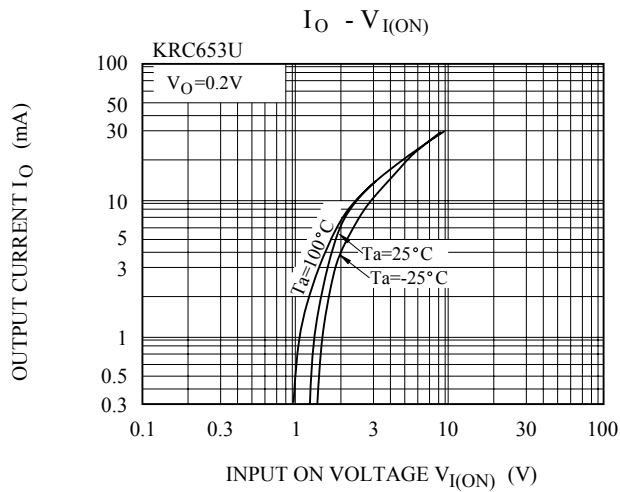
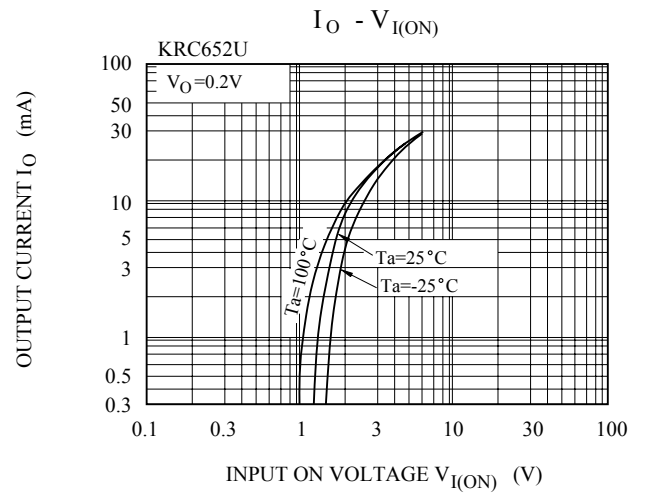
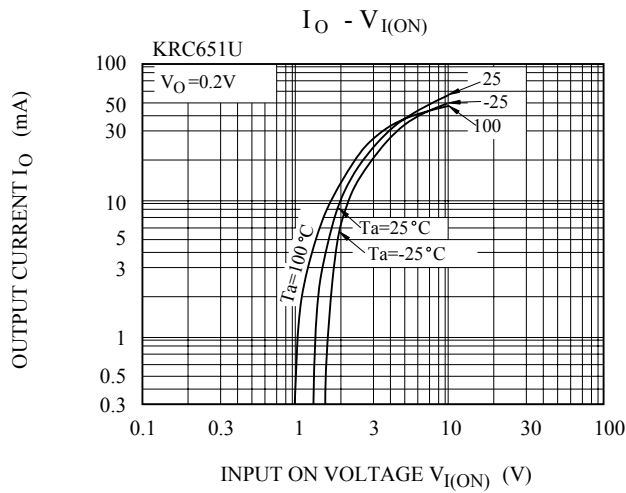
Note : * Characteristic of Transistor Only.

KRC651U~KRC656U

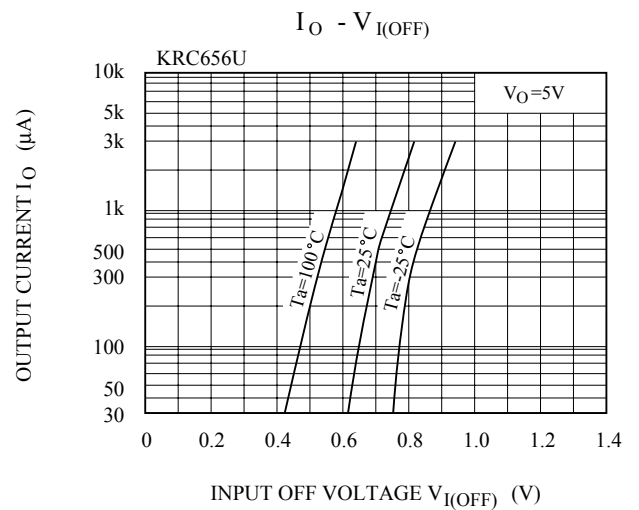
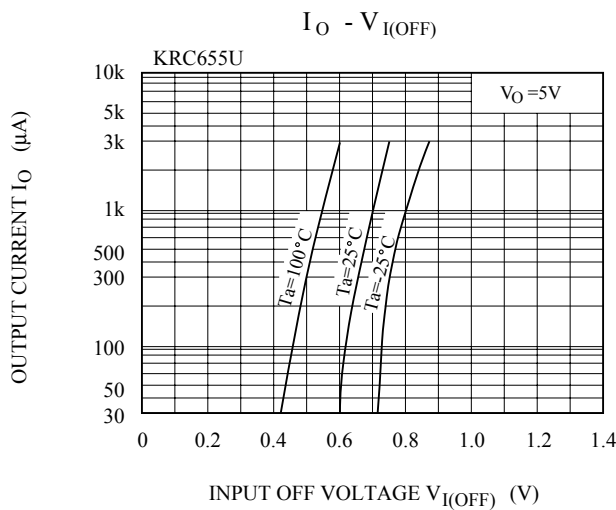
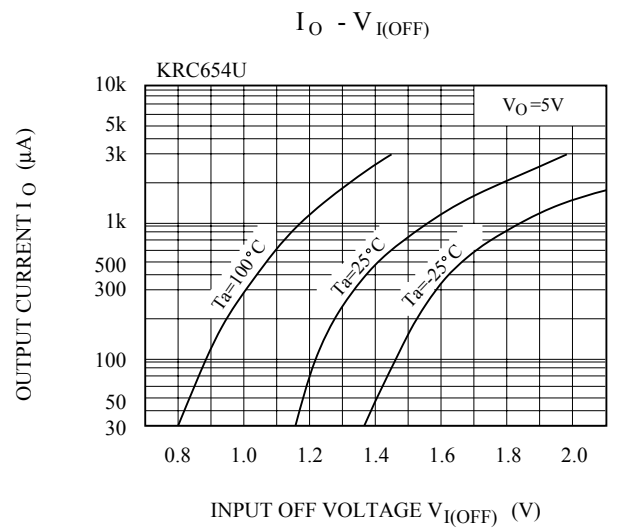
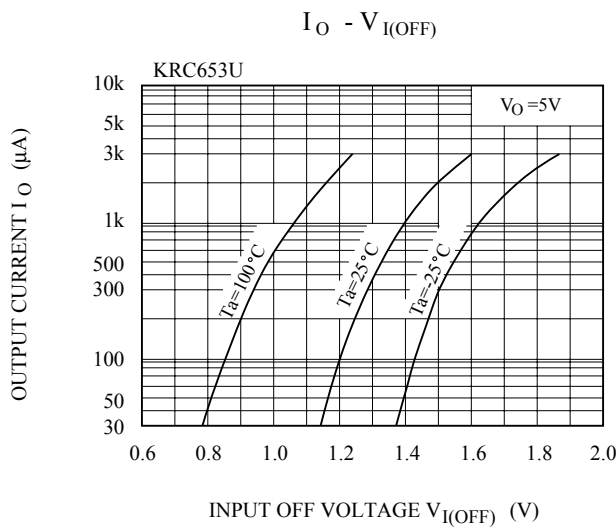
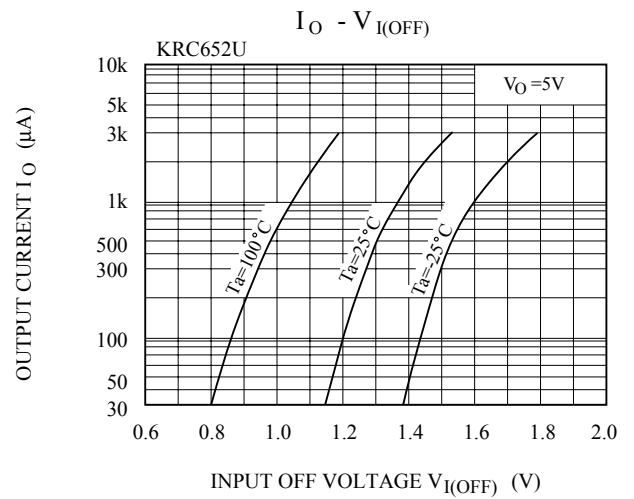
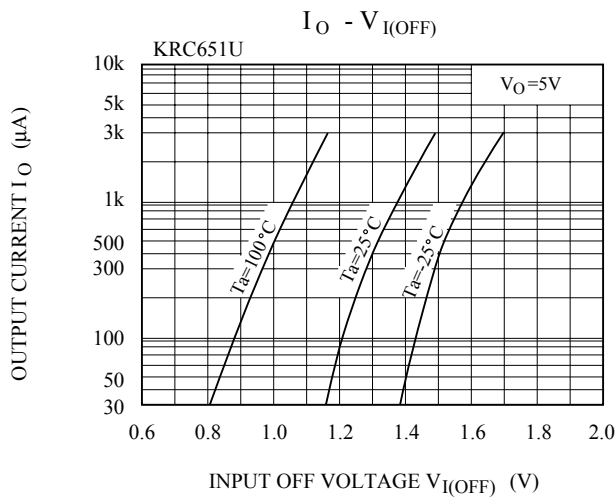
ELECTRICAL CHARACTERISTICS (Ta=25℃)

CHARACTERISTIC			SYMBOL	TEST CONDITION	MIN.	TYP.	MAX.	UNIT
Switching Time	Rise Time	KRC651U	t _r	V _O =5V V _{IN} =5V R _L =1kΩ	-	0.03	-	μS
		KRC652U			-	0.05	-	
		KRC653U			-	0.12	-	
		KRC654U			-	0.22	-	
		KRC655U			-	0.01	-	
		KRC656U			-	0.03	-	
	Storage Time	KRC651U	t _{stg}		-	2.0	-	
		KRC652U			-	2.0	-	
		KRC653U			-	2.0	-	
		KRC654U			-	2.0	-	
		KRC655U			-	2.0	-	
		KRC656U			-	2.0	-	
	Fall Time	KRC651U	t _f		-	0.12	-	
		KRC652U			-	0.36	-	
		KRC653U			-	0.35	-	
		KRC654U			-	0.6	-	
		KRC655U			-	0.1	-	
		KRC656U			-	0.19	-	

KRC651U~KRC656U



KRC651U~KRC656U



KRC651U~KRC656U

