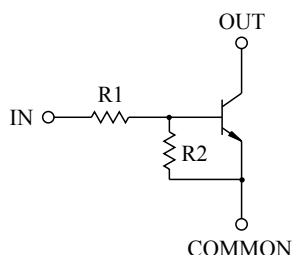


SWITCHING APPLICATION.  
INTERFACE CIRCUIT AND DRIVER CIRCUIT APPLICATION.

### FEATURES

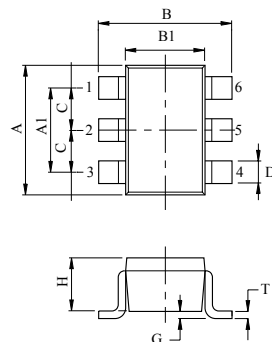
- With Built-in Bias Resistors.
- Simplify Circuit Design.
- Reduce a Quantity of Parts and Manufacturing Process.
- High Packing Density.

### EQUIVALENT CIRCUIT



### BIAS RESISTOR VALUES

TYPE NO.	R1(k $\Omega$ )	R2(k $\Omega$ )
KRC827U	10	47
KRC828U	22	47
KRC829U	47	22

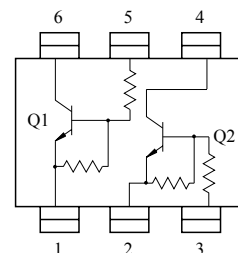


DIM	MILLIMETERS
A	2.00 $\pm$ 0.20
A1	1.3 $\pm$ 0.1
B	2.1 $\pm$ 0.1
B1	1.25 $\pm$ 0.1
C	0.65
D	0.2+0.10/-0.05
G	0-0.1
H	0.9 $\pm$ 0.1
T	0.15+0.1/-0.05

1. Q<sub>1</sub> COMMON (EMITTER)
2. Q<sub>2</sub> COMMON (EMITTER)
3. Q<sub>2</sub> IN (BASE)
4. Q<sub>2</sub> OUT (COLLECTOR)
5. Q<sub>1</sub> IN (BASE)
6. Q<sub>1</sub> OUT (COLLECTOR)

US6

### EQUIVALENT CIRCUIT (TOP VIEW)



### MAXIMUM RATING (Ta=25°C)

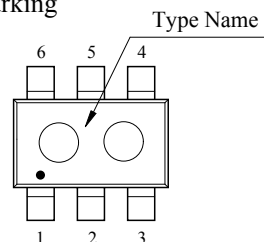
CHARACTERISTIC		SYMBOL	RATING	UNIT
Output Voltage	KRC827U ~ 829U	V <sub>O</sub>	50	V
Input Voltage	KRC827U	V <sub>I</sub>	30, -6	V
	KRC828U		40, -7	
	KRC829U		40, -15	
Output Current	KRC827U ~ 829U	I <sub>O</sub>	100	mA
Power Dissipation		P <sub>D</sub> *	200	mW
Junction Temperature		T <sub>j</sub>	150	°C
Storage Temperature Range		T <sub>stg</sub>	-55 ~ 150	°C

\* Total Rating.

### MARK SPEC

TYPE	KRC827U	KRC828U	KRC829U
MARK	YH	YI	YJ

### Marking



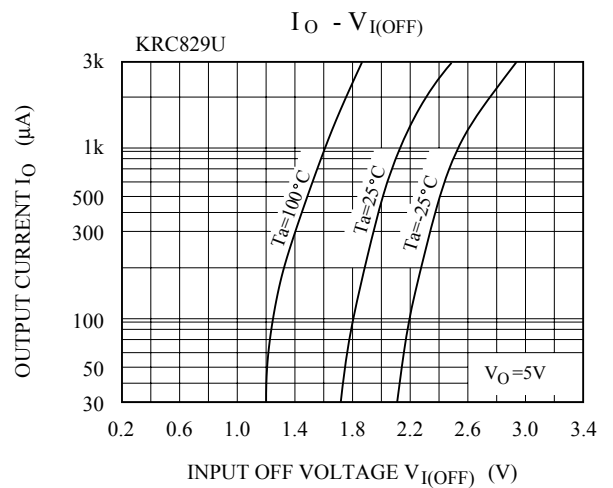
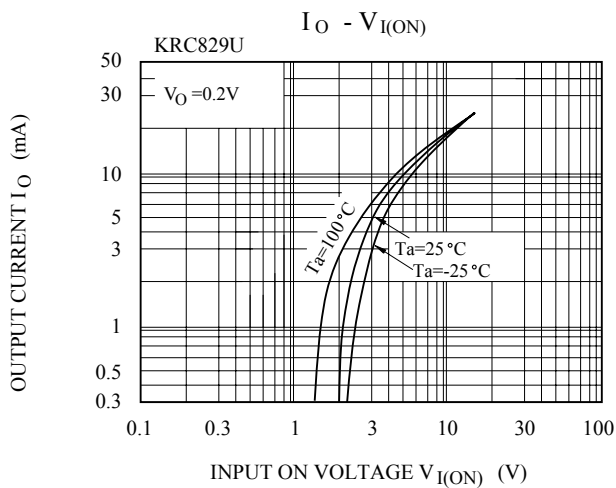
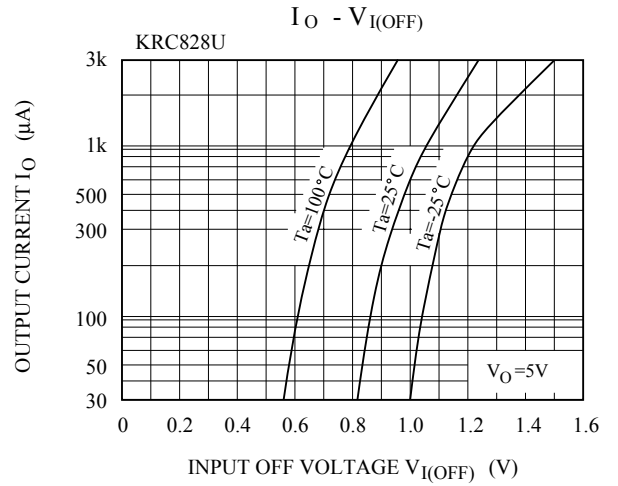
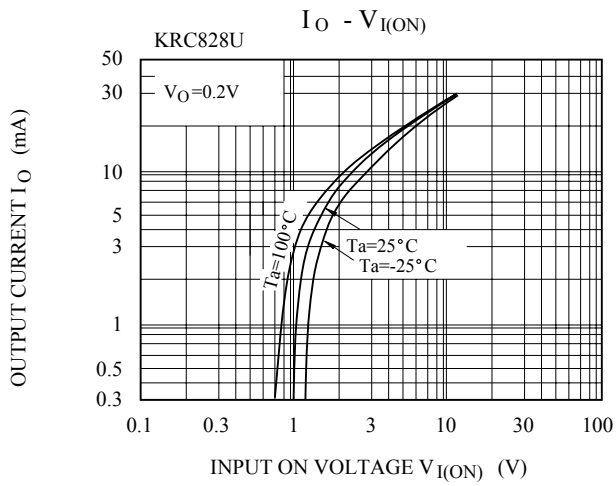
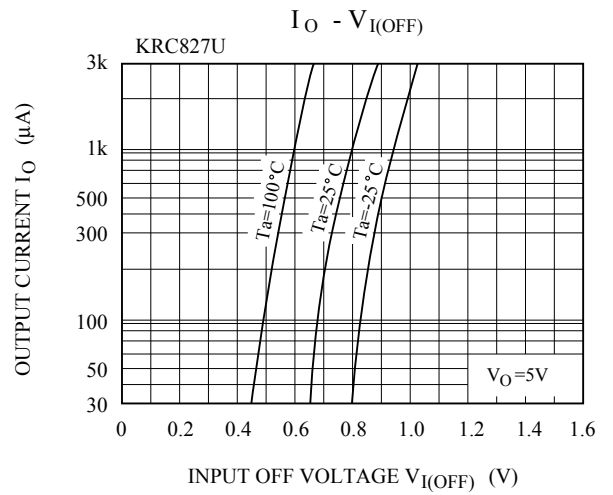
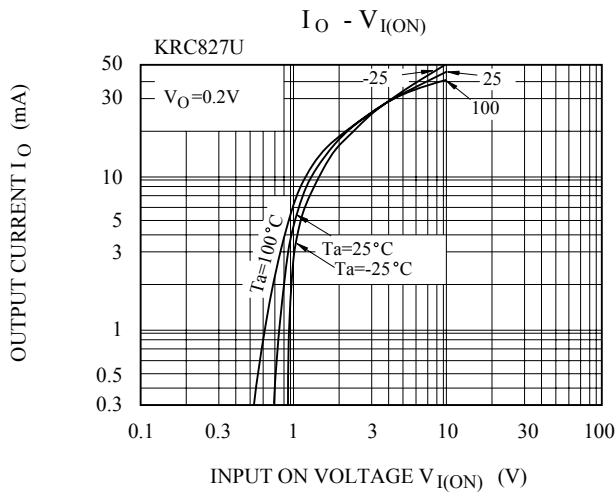
# KRC827U~KRC829U

## ELECTRICAL CHARACTERISTICS (Ta=25℃)

CHARACTERISTIC			SYMBOL	TEST CONDITION	MIN.	TYP.	MAX.	UNIT	
Output Cut-off Current			KRC827U ~ 829U	I <sub>O(OFF)</sub>	V <sub>O</sub> =50V, V <sub>I</sub> =0	-	-	500	nA
DC Current Gain			KRC827U	G <sub>I</sub>	V <sub>O</sub> =5V, I <sub>O</sub> =10mA	80	150	-	
			KRC828U			80	150	-	
			KRC829U			70	140	-	
Output Voltage			KRC827U ~ 829U	V <sub>O(ON)</sub>	I <sub>O</sub> =10mA, I <sub>I</sub> =0.5mA	-	0.1	0.3	V
Input Voltage (ON)			KRC827U	V <sub>I(ON)</sub>	V <sub>O</sub> =0.2V, I <sub>O</sub> =5mA	-	1.2	1.8	V
			KRC828U			-	1.8	2.6	
			KRC829U			-	3.0	5.8	
Input Votlage (OFF)			KRC827U	V <sub>I(OFF)</sub>	V <sub>O</sub> =5V, I <sub>O</sub> =0.1mA	0.5	0.75	-	V
			KRC828U			0.6	0.88	-	
			KRC829U			1.5	1.82	-	
Transition Frequency			KRC827U ~ 829U	f <sub>I</sub> *	V <sub>O</sub> =10V, I <sub>O</sub> =5mA	-	200	-	MHz
Input Current			KRC827U	I <sub>I</sub>	V <sub>I</sub> =5V	-	-	0.88	mA
			KRC828U			-	-	0.36	
			KRC829U			-	-	0.16	
Switching Time	Rise Time	KRC827U	t <sub>r</sub>	V <sub>O</sub> =5V, V <sub>IN</sub> =5V R <sub>L</sub> =1kΩ	-	0.05	-	μS	
		KRC828U			-	0.12	-		
		KRC829U			-	0.26	-		
	Storage Time	KRC827U	t <sub>stg</sub>		-	2.0	-		
		KRC828U			-	2.4	-		
		KRC829U			-	1.5	-		
	Fall Time	KRC827U	t <sub>f</sub>		-	0.36	-		
		KRC828U			-	0.4	-		
		KRC829U			-	0.41	-		

Note : \* Characteristic of Transistor Only.

# KRC827U~KRC829U



# KRC827U~KRC829U

