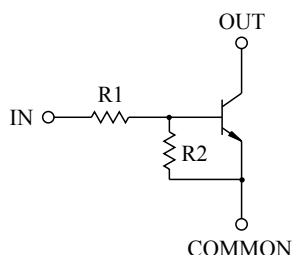


SWITCHING APPLICATION.
INTERFACE CIRCUIT AND DRIVER CIRCUIT APPLICATION.

FEATURES

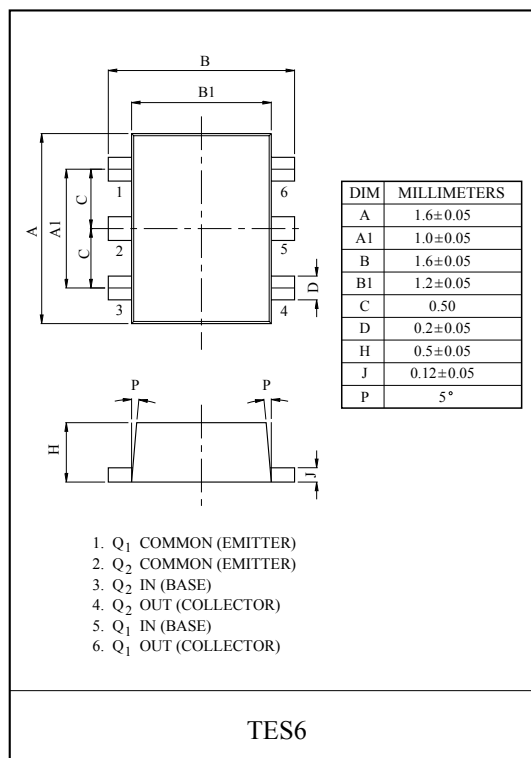
- With Built-in Bias Resistors.
- Simplify Circuit Design.
- Reduce a Quantity of Parts and Manufacturing Process.
- High Packing Density.

EQUIVALENT CIRCUIT

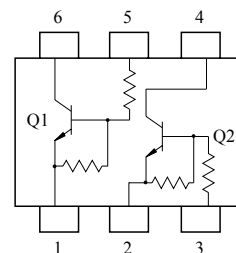


BIAS RESISTOR VALUES

TYPE NO.	R1(k Ω)	R2(k Ω)
KRC827E	10	47
KRC828E	22	47
KRC829E	47	22



EQUIVALENT CIRCUIT (TOP VIEW)



MAXIMUM RATING (Ta=25℃)

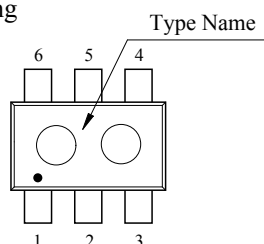
CHARACTERISTIC		SYMBOL	RATING	UNIT
Output Voltage	KRC827E ~ 829E	V _O	50	V
Input Voltage	KRC827E	V _I	30, -6	V
	KRC828E		40, -7	
	KRC829E		40, -15	
Output Current	KRC827E ~ 829E	I _O	100	mA
Power Dissipation		P _D *	200	mW
Junction Temperature		T _j	150	℃
Storage Temperature Range		T _{stg}	-55 ~ 150	℃

* Total Rating.

MARK SPEC

TYPE	KRC827E	KRC828E	KRC829E
MARK	YH	YI	YJ

Marking



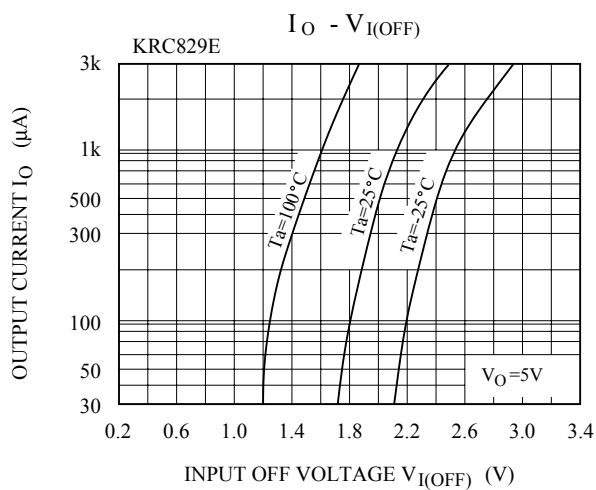
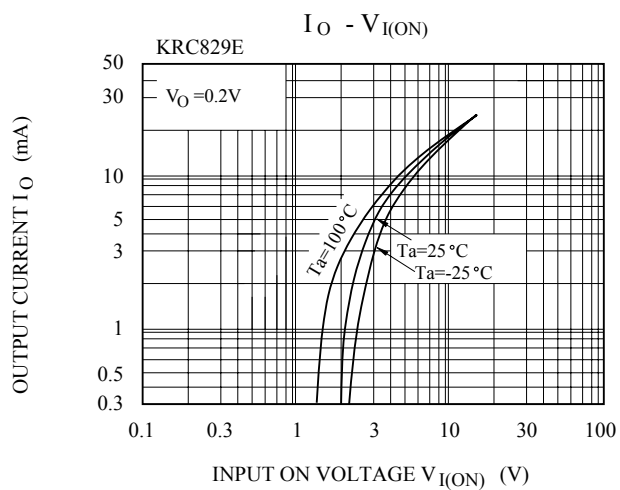
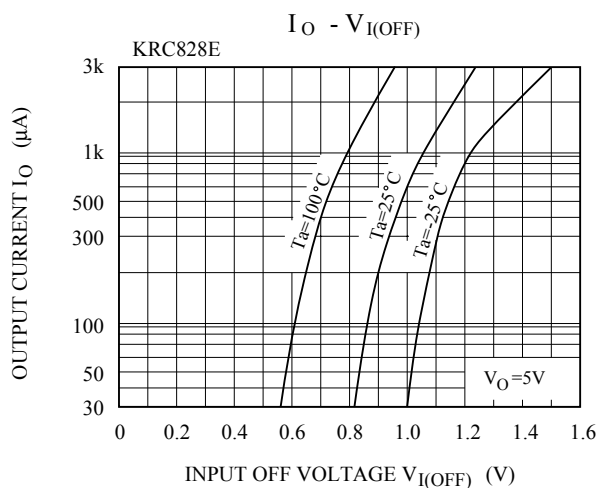
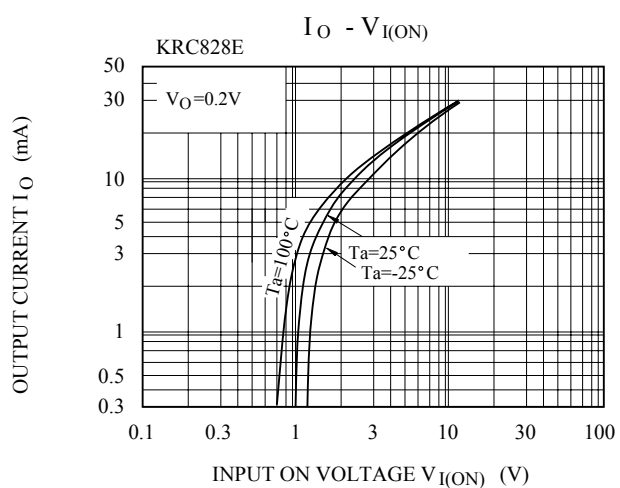
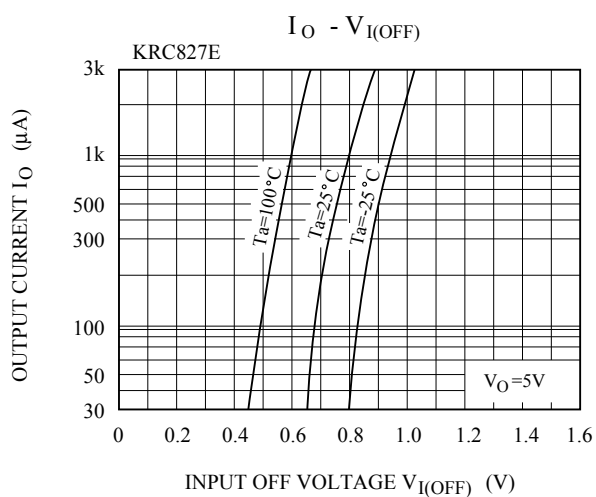
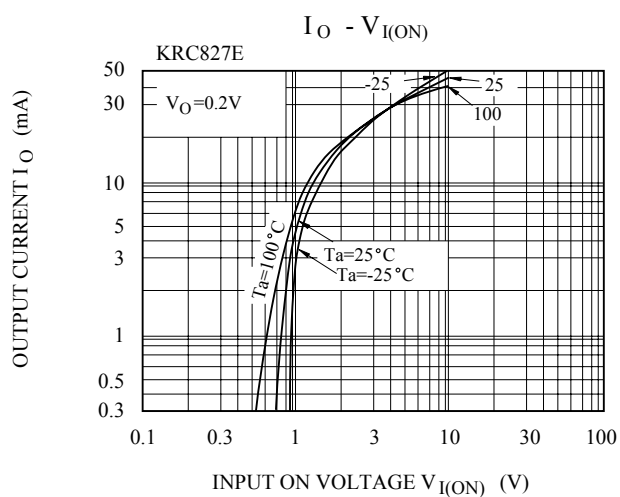
KRC827E~KRC829E

ELECTRICAL CHARACTERISTICS (Ta=25°C)

CHARACTERISTIC			SYMBOL	TEST CONDITION	MIN.	TYP.	MAX.	UNIT	
Output Cut-off Current			KRC827E ~ 829E	I _{O(OFF)}	V _O =50V, V _I =0	-	-	500	nA
DC Current Gain			KRC827E	G _I	V _O =5V, I _O =10mA	80	150	-	
			KRC828E			80	150	-	
			KRC829E			70	140	-	
Output Voltage			KRC827E ~ 829E	V _{O(ON)}	I _O =10mA, I _I =0.5mA	-	0.1	0.3	V
Input Voltage (ON)			KRC827E	V _{I(ON)}	V _O =0.2V, I _O =5mA	-	1.2	1.8	V
			KRC828E			-	1.8	2.6	
			KRC829E			-	3.0	5.8	
Input Votlage (OFF)			KRC827E	V _{I(OFF)}	V _O =5V, I _O =0.1mA	0.5	0.75	-	V
			KRC828E			0.6	0.88	-	
			KRC829E			1.5	1.82	-	
Transition Frequency			KRC827E ~ 829E	f _I *	V _O =10V, I _O =5mA	-	200	-	MHz
Input Current			KRC827E	I _I	V _I =5V	-	-	0.88	mA
			KRC828E			-	-	0.36	
			KRC829E			-	-	0.16	
Switching Time	Rise Time	KRC827E	t _r	V _O =5V, V _{IN} =5V R _L =1kΩ	-	0.05	-	μS	
		KRC828E			-	0.12	-		
		KRC829E			-	0.26	-		
	Storage Time	KRC827E	t _{stg}		-	2.0	-		
		KRC828E			-	2.4	-		
		KRC829E			-	1.5	-		
	Fall Time	KRC827E	t _f		-	0.36	-		
		KRC828E			-	0.4	-		
		KRC829E			-	0.41	-		

Note : * Characteristic of Transistor Only.

KRC827E~KRC829E



KRC827E~KRC829E

