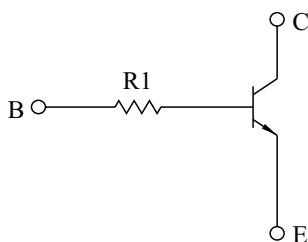


SWITCHING APPLICATION.  
INTERFACE CIRCUIT AND DRIVER CIRCUIT APPLICATION.

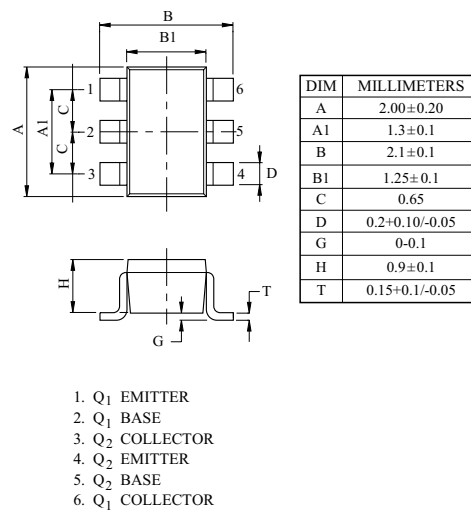
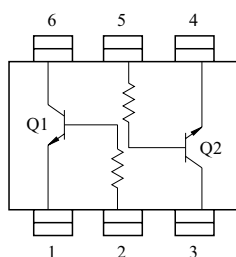
### FEATURES

- With Built-in Bias Resistors.
- Simplify Circuit Design.
- Reduce a Quantity of Parts and Manufacturing Process.
- High Packing Density.

### EQUIVALENT CIRCUIT



### EQUIVALENT CIRCUIT (TOP VIEW)



US6

### MAXIMUM RATING (Ta=25℃)

CHARACTERISTIC	SYMBOL	RATING	UNIT
Collector-Base Voltage	$V_{CBO}$	50	V
Collector-Emitter Voltage	$V_{CEO}$	50	V
Emitter-Base Voltage	$V_{EBO}$	5	V
Collector Current	$I_C$	100	mA

CHARACTERISTIC	SYMBOL	RATING	UNIT
Collector Power Dissipation	$P_C$ *	200	mW
Junction Temperature	$T_j$	150	℃
Storage Temperature Range	$T_{stg}$	-55 ~ 150	℃

\* Total Rating.

### ELECTRICAL CHARACTERISTICS (Ta=25℃)

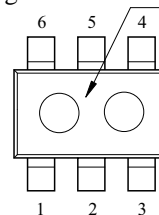
CHARACTERISTIC	SYMBOL	TEST CONDITION	MIN.	TYP.	MAX.	UNIT
Collector Cut-off Current	$I_{CBO}$	$V_{CB}=50V, I_E=0$	-	-	100	nA
Emitter Cut-off Current	$I_{EBO}$	$V_{EB}=5V, I_C=0$	-	-	100	nA
DC Current Gain	$h_{FE}$	$V_{CE}=5V, I_C=1mA$	120	-	-	
Collector-Emitter Saturation Voltage	$V_{CE(sat)}$	$I_C=10mA, I_B=0.5mA$	-	0.1	0.3	V
Transition Frequency	$f_T$ *	$V_{CE}=10V, I_C=5mA$	-	250	-	MHz
Input Resistor	KRC860U	$R_1$	-	4.7	-	kΩ
	KRC861U		-	10	-	
	KRC862U		-	100	-	
	KRC863U		-	22	-	
	KRC864U		-	47	-	

Note : \* Characteristic of Transistor Only.

### MARK SPEC

TYPE	KRC860U	KRC861U	KRC862U	KRC863U	KRC864U
MARK	NK	NM	NN	NO	NP

Marking Type Name

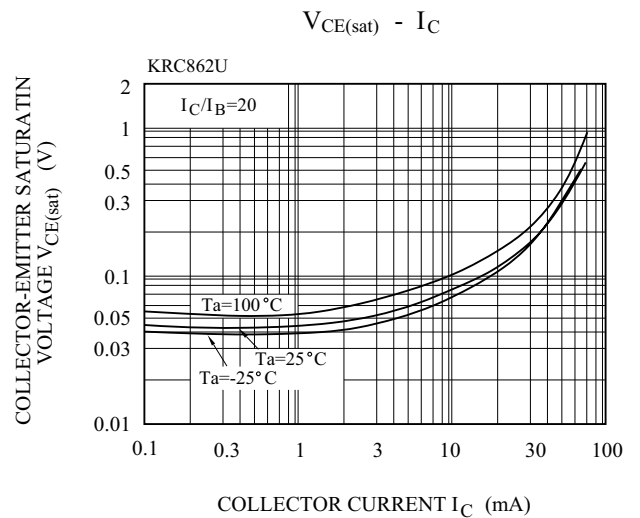
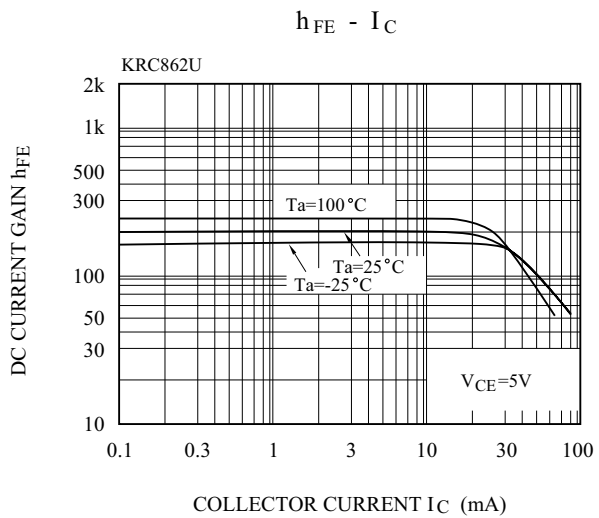
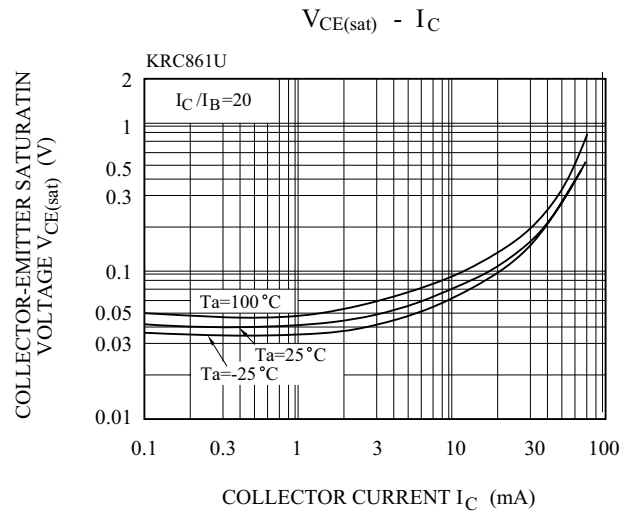
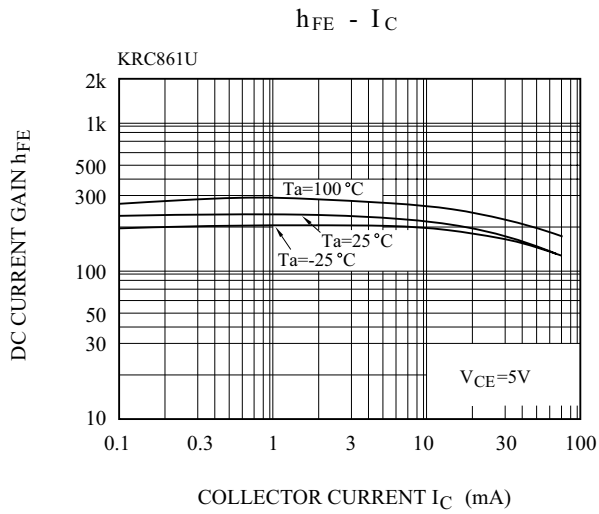
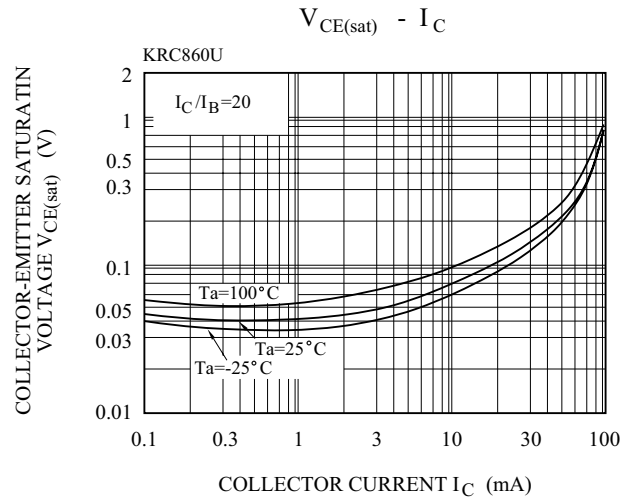
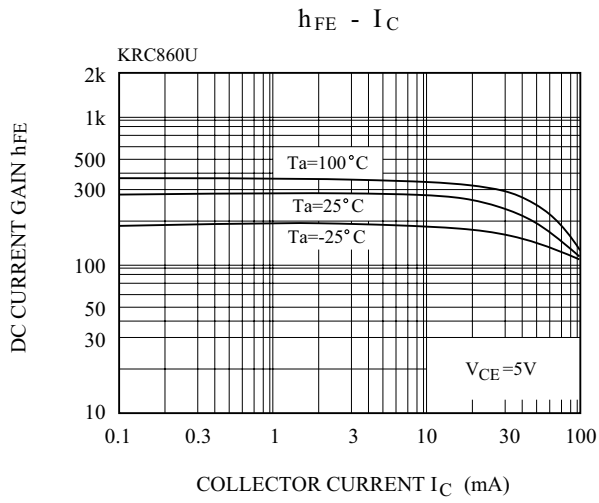


# KRC860U~KRC864U

## ELECTRICAL CHARACTERISTICS (Ta=25 °C)

CHARACTERISTIC			SYMBOL	TEST CONDITION	MIN.	TYP.	MAX.	UNIT
Switching Time	Rise Time	KRC860U	t <sub>r</sub>	V <sub>O</sub> =5V V <sub>IN</sub> =5V R <sub>L</sub> =1k Ω	-	0.025	-	μS
		KRC861U			-	0.03	-	
		KRC862U			-	0.3	-	
		KRC863U			-	0.06	-	
		KRC864U			-	0.11	-	
	Storage Time	KRC860U	t <sub>stg</sub>		-	3.0	-	
		KRC861U			-	2.0	-	
		KRC862U			-	6.0	-	
		KRC863U			-	4.0	-	
		KRC864U			-	5.0	-	
	Fall Time	KRC860U	t <sub>f</sub>		-	0.2	-	
		KRC861U			-	0.12	-	
		KRC862U			-	2.0	-	
		KRC863U			-	0.9	-	
		KRC864U			-	1.4	-	

# KRC860U~KRC864U



# KRC860U~KRC864U

