

KB814

GENERAL PURPOSE
HIGH ISOLATION VOLTAGE
SINGLE TRANSISTOR TYPE
PHOTOCOUPLER SERIES

FEATURES

- 1.AC Input
- 2.High isolation voltage between input and output (Viso=5000 Vrms)
- 3.Compact dual-in-line package
KB814:1-channel type
- 4.Recognized by UL and CUL,file NO.E225308

DESCRIPTION

- 1.The KB814 is optically coupled isolators containing two
GaAs light emitting diode and an NPN silicon phototransistor.
- 2.The lead pitch is 2.54mm

APPLICATIONS

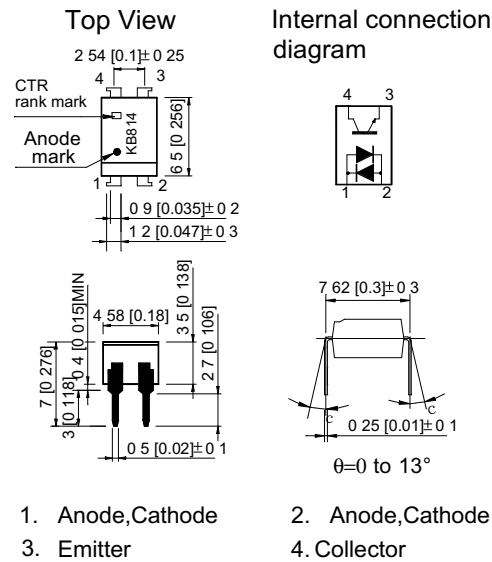
- 1.Computer terminals
- 2.Registers, copiers, automatic vending machines
- 3.System appliances, measuring instruments
- 4.Programmable logic controller
- 5.Signal transmission between circuits of different potentials and impedances

KB814

* PACKAGE DIMENSIONS (UNIT: mm)

DIP Type

KB814



TOLERANCE: $\pm 0.5 [\pm 0.02]$ UNLESS OTHERWISE NOTED.

KB814

*Absolute Maximum Ratings (Ta=25°C)

Parameter		Symbol	Rating	Unit
Input	Forward Current	I _F	±50	mA
	Power dissipation	P	70	mW
Output	Collector-emitter voltage	V _{CEO}	35	V
	Emitter-collector voltage	V _{ECO}	6	V
	Collector current	I _C	50	mA
	Collector power dissipation	P _C	150	mW
Total power dissipation		P _{tot}	200	mW
*1 Isolation voltage		V _{iso}	5000	V _{rms}
Operating temperature		T _{opr}	-30~+100	°C
Storage temperature		T _{stg}	-55~+125	°C
*2 Soldering temperature		T _{sol}	260	°C

*1 40 to 60%RH,AC for 1 minute.

*2 For 10 seconds.

*Electro-optical Characteristics

Parameter		Symbol	Conditions	Min.	Typ.	Max.	Unit
Input	Forward voltage	V _F	I _F =±20mA	—	1.2	1.4	V
	Peak forward voltage	V _{FM}	I _{FM} =±0.5A	—	—	3.0	V
Output	Collector dark current	I _{CEO}	V _{CE} =20V, I _F =0mA	—	—	10 ⁻⁷	A
Transfer characteristics	*1 Current transfer ratio	CTR	I _F =±1mA, V _{CE} =5V	20	—	300	%
	Collector-emitter saturation voltage	V _{CE(sat)}	I _F =±20mA, I _C =1mA	—	0.1	0.2	V
	Response time	Rise time	V _{CE} =2V, I _C =2mA R _L =100Ω	—	4	18	μs
		Fall time		—	3	18	μs

*1 Classification table of current transfer ratio is shown below.

$$CTR = \frac{I_C}{I_F} \times 100\%$$

Model NO.	Rank mark	CTR(%)
KB814L	L	20~60
KB814A	A	50~150
KB814B	B	120~300
KB814LA	L or A	20~150
KB814AB	A or B	50~300
KB814	L.A.B or No mark	20~300

Fig. 1 Current Transfer Ratio vs. Forward Current

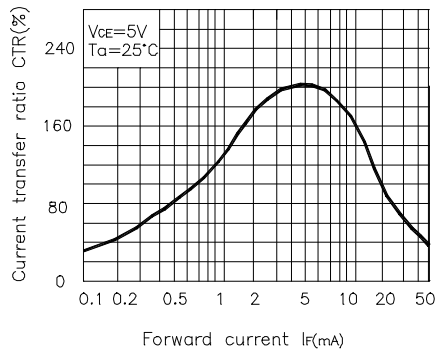


Fig. 2 Forward Current vs. Forward voltage

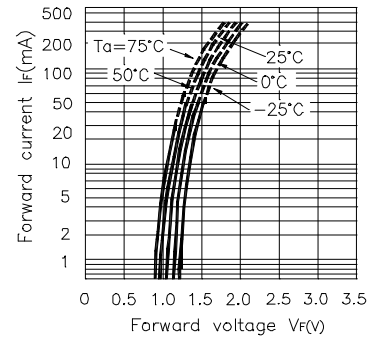


Fig. 3 Collector Current vs. Collector-emitter Voltage

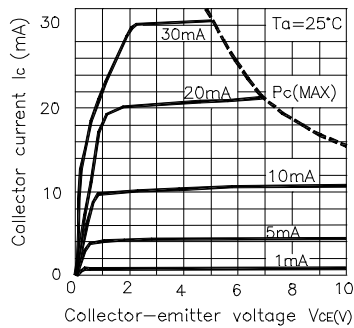


Fig. 4 Relative Current Transfer Ratio vs. Ambient Temperature

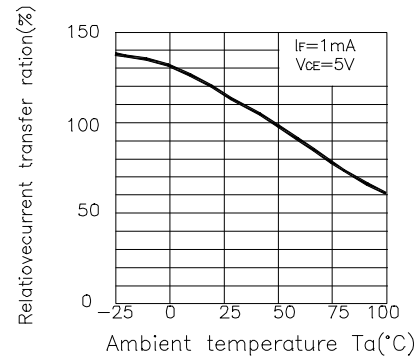


Fig. 5 Collector-emitter Saturation Voltage vs. Ambient Temperature

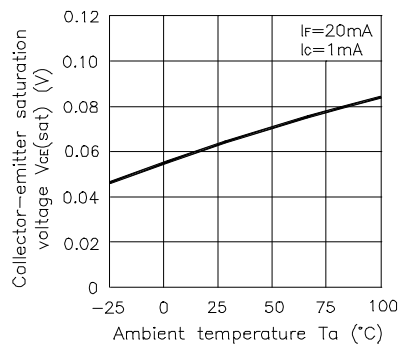
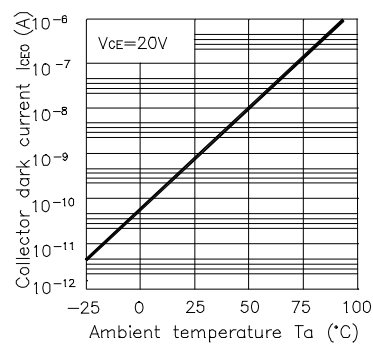


Fig. 6 Collector Dark Current vs. Ambient Temperature



KB814

Fig. 7 Forward Current vs. Ambient Temperature

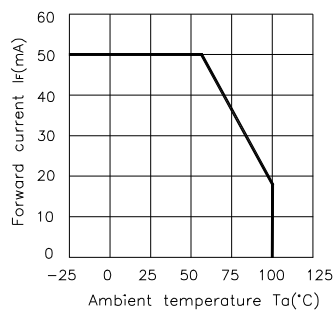


Fig. 8 Collector Power Dissipation vs. Ambient Temperature

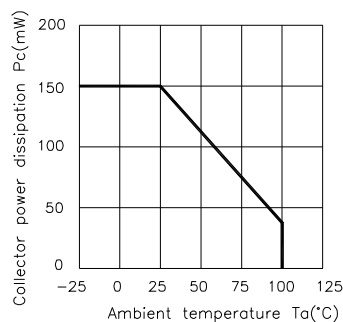
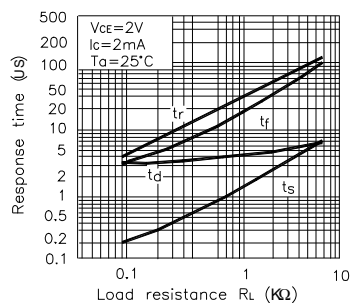


Fig. 9 Response Time vs. Load Resistance



Test Circuit for Response Time

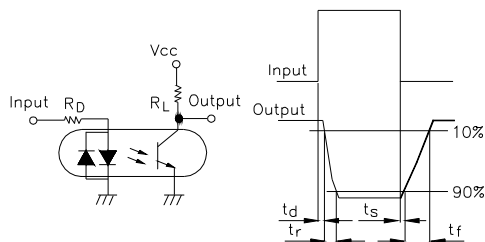
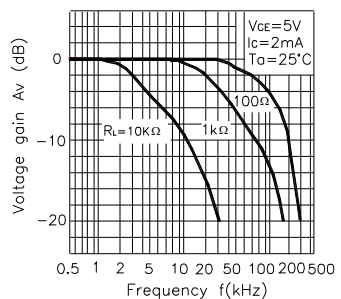


Fig. 10 Frequency Response



Test Circuit for Frequency Response

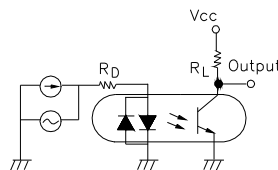
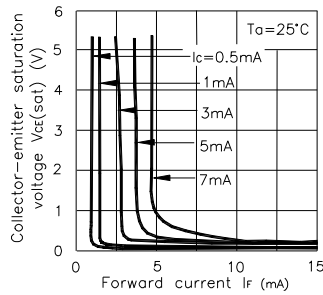


Fig. 11 Collector-emitter Saturation Voltage vs. Forward Current



* NOTES ON HANDLING

1.Recommended soldering conditions (Dip soldering)

(1) Dip soldering

Temperature	260 °C or below (molten solder temperature)
Time	Less than 10 seconds.
Cycle	One cycle allowed to be dipped in solder including plastic mold portion.
Flux	Rosin flux containing small amount of chlorine (The flux with a maximum chlorine content of 0.2 Wt % is recommended.)

(2) Cautions

Fluxes

Avoid removing the residual flux with freon-based and chlorine-based cleaning solvent.

2.Cautions regarding noise

Be aware that power is suddenly into the component any surge current may cause damage happen, even if the voltage is within the absolute maximum ratings.

CAUTION

Within this device there exists GaAs (Gallium Arsenide) material which is a harmful substance if ingested.

GaAs dust and fumes are toxic. Do not break, cut or pulverize the product, or use chemicals to dissolve them.

RESTRICTIONS ON PRODUCT USE

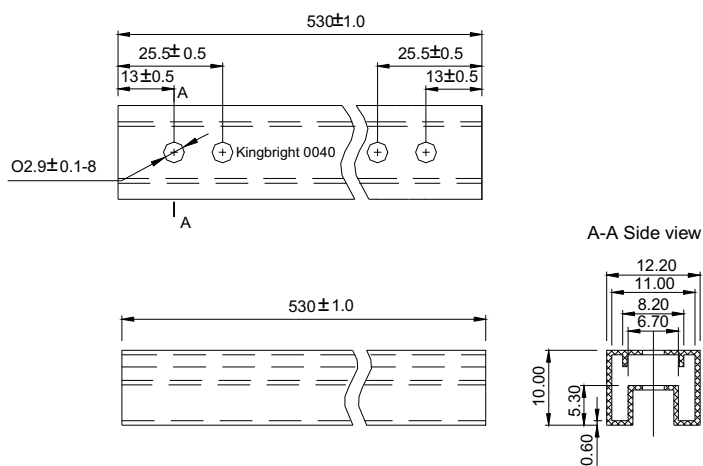
- The information in this document is subject to change without notice. Before using this document, please confirm that this is the latest version. Not all devices / types available in every country.
- We are mention about our product quality stablity, semiconductor devices in general can malfunction or fail due to their inherent electrical sensitivity and vulnerability to physical stress. It is the responsibility of the buyer, when utilizing KINGBRIGHT products, to observe standards of safety, and to a avoid situations in which a malfunction or failure of a KINGBRIGHT product could cause loss of human life, bodily injury or damage to property. In developing your designs, please ensure that KINGBRIGHT products are used within specified operating ranges as set forth in the most recent products specifications.

KB814

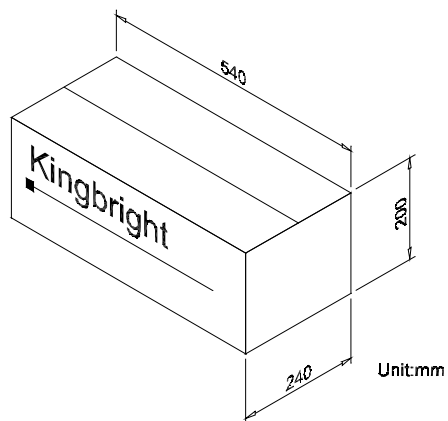
Dimension of Tube

TOLERANCE: ± 0.4 [± 0.012] UNLESS OTHERWISE NOTED.

Unit:mm



Dimension of Carton



Part Number	Package	Packing Style
KB814	4-pin DIP	100pcs / each tube