

HPI - 304R4L

The HPI - 304R4L is a high - output, high - speed silicon photodiode mounted in a side - viewing plastic package with visible light cut - off filter. This photodiode is both compact and easy to mount.

FEATURES

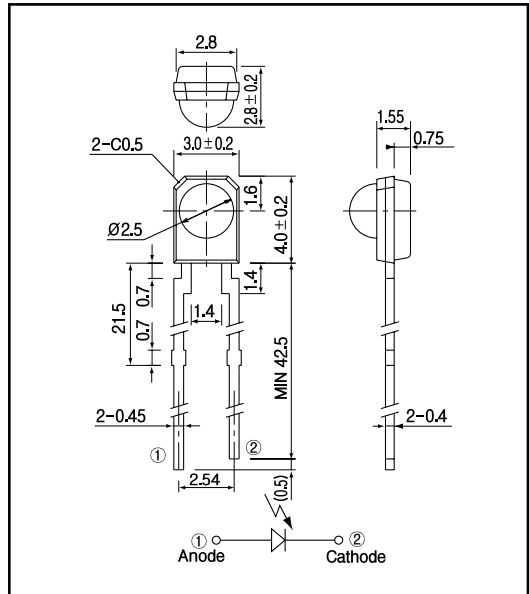
- Visible ray widely cut off mold type
- High output power
- High speed response
- Long leads type 42.5mm(Min.)

APPLICATIONS

- Optical switches

DIMENSIONS

(Unit : mm)



MAXIMUM RATINGS

(Ta=25)

Item	Symbol	Rating	Unit
Reverse voltage	V_R	40	V
Power dissipation	P_D	-	mW
Operating temp.	Topr.	- 30 + 70	
Storage temp.	Tstg.	- 40 + 80	
Soldering temp. ^{†1}	Tsol.	260	

*1.For MAX.5 seconds at the position of 2 mm from the package

ELECTRO-OPTICAL CHARACTERISTICS

(Ta=25)

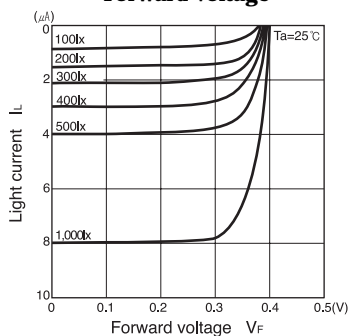
Item	Symbol	Conditions	Min.	Typ.	Max.	Unit.
Short circuit current	I_{sc}	$E_v = 1000\text{lx}^{-12}$	5			μA
Dark current	I_d	$V_R = 10\text{V}$			20	nA
Capacitance	C_t	$V = 10\text{V}, f = 1\text{MHz}$		6		pF
Spectral sensitivity				860 1100		nm
Peak wavelength	λ_p			960		nm
Half angle				± 45		deg.

*2.Color temp.=2856K standard Tungsten lamp

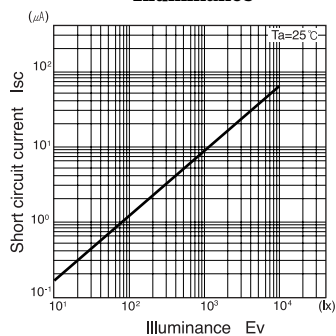
PIN Photodiode

HPI - 304R4L

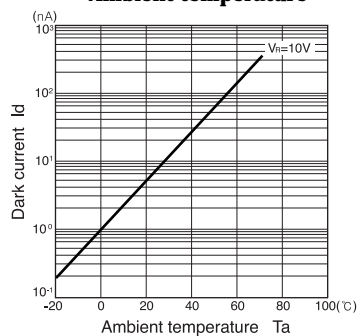
**Light current Vs.
Forward voltage**



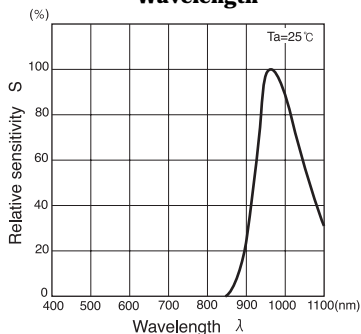
**Short circuit current Vs.
Illuminance**



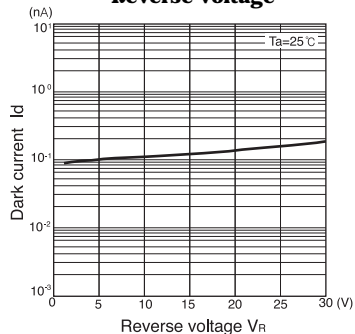
**Dark current Vs.
Ambient temperature**



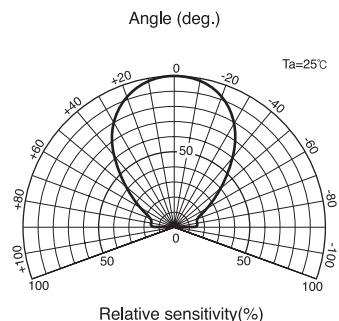
**Relative sensitivity Vs.
Wavelength**



**Dark current Vs.
Reverse voltage**



Radiant Pattern



**Capacitance between terminals Vs.
Reverse voltage**

