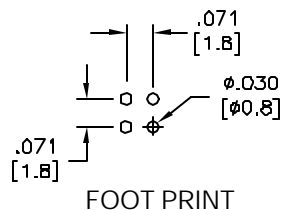
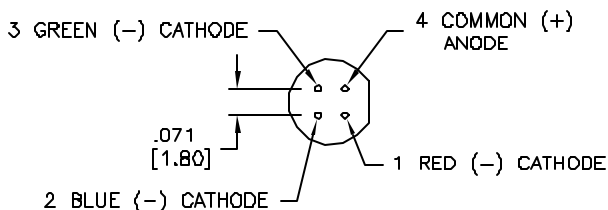
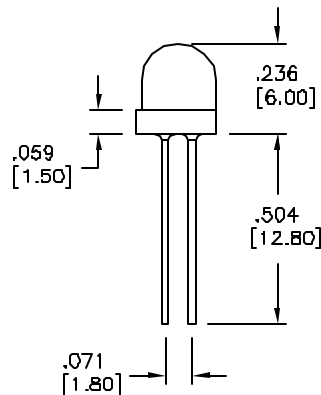
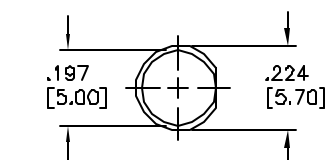


LTR	REVISION	DATE	APPD
-	RELEASED	01-26-99	
A	RVSD PER ECR 021601-RM01	02-16-01	RM
B	RVSD PER ECR 080502-RM01	08-05-02	RM



NOTES:

1. ALL DIMS ARE IN INCHES {MILLIMETERS}.
2. TOLERANCE IS $\pm 0.010"$ ($\pm 0.25\text{mm}$) UNLESS OTHERWISE SPECIFIED.
3. LEAD SPACING IS MEASURED WHERE LEADS EMERGE FROM THE PACKAGE.
4. LEADS TO BE SOLDERABLE AND CAPABLE OF MEETING THE SOLDERABILITY REQUIREMENTS OF MIL-STD-202, METHOD 208.
5. MANUFACTURE DATE SHALL NOT BE OLDER THAN 26 WEEKS (6 MONTHS).

LEDTRONICS PART NO.	L.E.D. RADIATION COLOR	L.E.D. APPEARANCE	ABSOLUTE MAXIMUM RATINGS (Ta=25°C)					ELECTRO-OPTICAL CHARACTERISTICS (Ta=25°C)					
			Pd mW		If mA	Vr V	Topr (°C)	If mA	Iv mod typ	Vf=V typ		Ir max µA	λPeak nm
DIS-1024-007	ULTRA RED	WATER CLEAR	60		30	3	-10 TO +60	20	180	1.9		10	630
	GREEN		100		30	3	-10 TO +60	20	400	3.5		100	525
	BLUE		100		30	3	-10 TO +60	20	200	3.5		100	468
DIS-1024-107	ULTRA RED	DIFFUSED	60		30	3	-10 TO +60	20	60	1.8		10	660
	GREEN		100		30	3	-10 TO +60	20	160	3.5		100	525
	BLUE		100		30	3	-10 TO +60	20	60	3.5		100	468

Tstg: -20°C TO $+80^\circ\text{C}$

LEAD SOLDERING TEMP: [5mm (.197in) FROM BODY] 260°C FOR 3 SEC.

LED[®]
LEDTRONICS, INC.
23105 KASHIWA COURT
TORRANCE, CA 90505

PROPRIETARY.
This document contains Proprietary
Information of LEDTRONICS, INC.
It may not be copied, used or disclosed
for any purpose without the prior express
written consent of LEDTRONICS, INC.

.XXX \pm .010 TOLERANCE PER ANSI-Y14.5
.XX \pm .025 (UNLESS OTHERWISE STATED)
ANGLES \pm $0^\circ, 30'$
FRACT. \pm 1/32

TITLE DIS-1024-X07			
DWG NO D1024006	SCALE 2:1	SHEET 1 OF 1	DATE 01-26-99
CODE IDENT NO. 8Z410	DWG BY SMA	CHK BY PL 08-05-02	QA MFG CUSTOMER