

# LA60Q Semiconductor Fuses

600 VAC ■ Very Fast-Acting ■ 5 – 40 Amperes

**NEW**



## SPECIFICATIONS

**Voltage Rating:** AC: 600 volts  
DC: 600 volts

**Interrupting Rating:** AC: 200,000 Amperes  
DC: 100,000 Amperes

**Ampere Range:** 5 – 40 Amperes

**Approvals:** UL Recognized under the components program.

## ORDERING INFORMATION

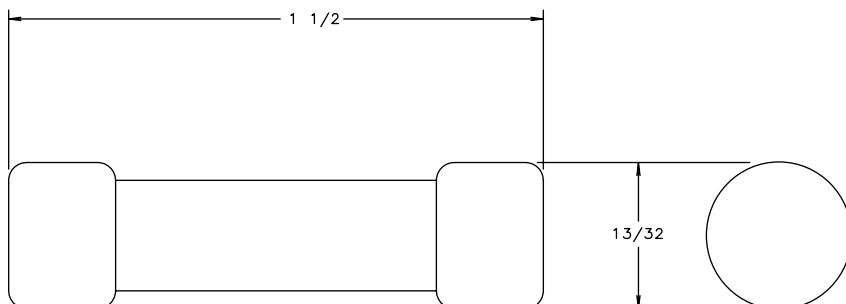
LA	60	Q	30	-2
Littelfuse	Voltage (600)	Style	Ampere Rating	Mounting Type (Ferrule, midjet dim. 1-1/2" x 13/32")

Littelfuse's LA60Q semiconductor protection fuses feature a 600 volt AC/DC rating in a compact size (1-1/2" x 13/32"). LA60Q also has the lowest I<sup>2</sup>t of all similar fuses and excellent cycling ability. Applications include inverters and small equipment requiring extremely fast response to faults, without the need to carry sustained heavy overloads..

## FEATURES

- **Lowest I<sup>2</sup>t** of any fuse this size for greater protection.
- **Excellent cycling ability** gives advantage in equipment design.

## DIMENSIONS



## Catalog Numbers & Technical Data

Ampere Rating	Littelfuse Catalog Number	Mounting Type	Maximum Clearing I <sup>2</sup> t @ 600 VAC (A <sup>2</sup> S x 10 <sup>3</sup> )	Watts Loss @ Rated Current (W)
5	LA60Q5-2	2	60	0.7
8	LA60Q8-2	2	70	1.1
10	LA60Q10-2	2	110	1.6
12	LA60Q12-2	2	150	2
15	LA60Q15-2	2	180	3
20	LA60Q20-2	2	330	4.4
25	LA60Q25-2	2	440	5.5
30	LA60Q30-2	2	860	5.6
35	LA60Q35-2	2	1300	6.4
40	LA60Q40-2	2	1800	7

Contact Littelfuse for characteristic curves.