

## FFM101 – FFM107

## 1A 片式快速二极管

## 1A FAST RECOVERY SMA DIODES

型 号 TYPE	印 字 Marking	反 向 重 复 峰 值 电 压 $V_{RRM}(V)$	正 向 平 均 电 流 $I_F(A)$	正 向 峰 值 电 压 $V_F(V)$	反 向 峰 值 电 流 $I_{RM}(\mu A)$	正 向 浪 涌 电 流 $I_{P8M}(A)$	反 向 恢 复 时 间 $T_{rr}(ns)$	外形尺寸 Package Dimensions
FFM101	FF1	50	1.0	1.3	5.0	30	150	DO – 214AC
FFM102	FF2	100						
FFM103	FF3	200						
FFM104	FF4	400						
FFM105	FF5	600						
FFM106	FF6	800					250	
FFM107	FF7	1000					500	

Trr测试条件:  $I_F=1A$ ,  $I_R=0.5A$ ,  $I_{RR}=0.25A$

Trr Test Conditions:  $I_F=1A$ ,  $I_R=0.5A$ ,  $I_{RR}=0.25A$



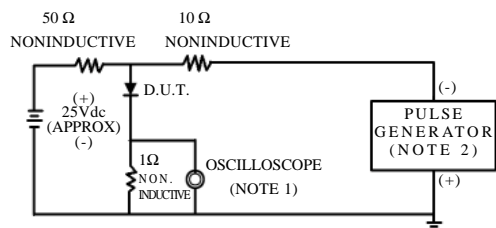
A	B	C	D	E	F	G	H
$\frac{.110(2.8)}{.086(2.2)}$	$\frac{.067(1.7)}{.051(1.3)}$	$\frac{.008}{(.2)} \text{ MAX}$	$\frac{.091(2.3)}{.067(1.7)}$	$\frac{.051(1.3)}{.008(0.2)}$	$\frac{.059(1.5)}{.035(0.9)}$	$\frac{.209(5.3)}{.185(4.7)}$	$\frac{.059(1.5)}{.035(0.9)}$

DO – 214AC

## FFM101 – FFM107

## 1 A 片式快速二极管额定值与特性曲线

## RATING &amp; CHARACTERISTIC CURVES OF 1A FAST RECOVERY SMA DIODES

 FIG.1-TEST CIRCUIT DIAGRAM AND  
REVERSE RECOVERY TIME CHARACTERISTIC


NOTES: 1. Rise Time = 7ns max.  
Input Impedance = 1 megohm, 22pF.  
2. Rise Time = 10ns max.  
Source Impedance = 50 ohms.

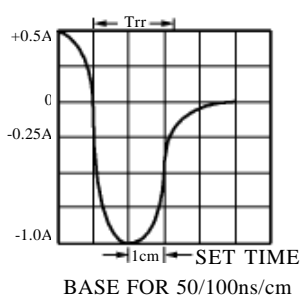

 FIG. 2 – TYPICAL FORWARD  
CURRENT DERATING CURVE

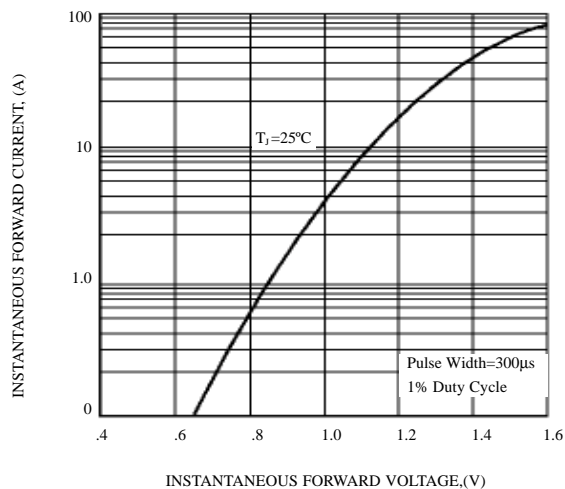
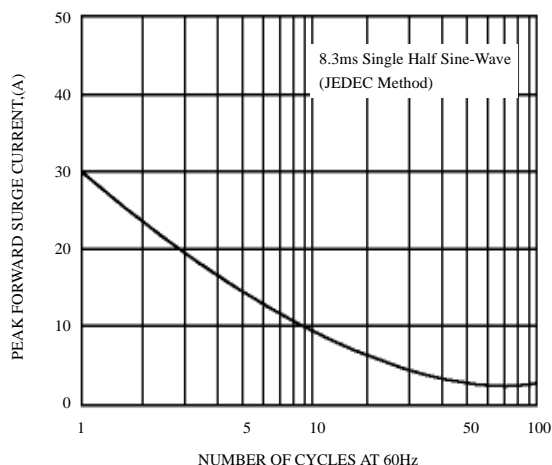
 FIG. 3 – TYPICAL INSTANTANEOUS  
FORWARD CHARACTERISTICS

 FIG. 4 – MAXIMUM NON-REPETITIVE  
FORWARD SURGE CURRENT


FIG. 5 – TYPICAL JUNCTION CAPACITANCE

