

SSF-LXH555UGD-4

ELECTRO-OPTICAL CHARACTERISTICS $I_f=25\text{mA}$ $I_f=20\text{mA}$				
PARAMETER	MIN	TYP	MAX	UNITS

PEAK WAVELENGTH	572			nm
FORWARD VOLTAGE		2.2	2.8	V_f
REVERSE VOLTAGE	5.0			V_r
AXIAL INTENSITY		25		mcd
VIEWING ANGLE		60		2θ thru
EMITTED COLOR:	GREEN			
EPOXY LENS FINISH:	GREEN DIFFUSED			

LIMITS OF SAFE OPERATION AT 25°C

PARAMETER	MAX	UNITS
PEAK FORWARD CURRENT*	200	mA
STEADY CURRENT	30	mA
POWER DISSIPATION	100	mW
DERATE FROM 25°C	-1.2	mW/°C
OPERATING, STORAGE TEMP.	-40 TO +85	°C
SOLDERING TEMP.	+260	°C
2.0mm FROM BODY	3 SEC. MAX	
* $t < 10\mu\text{s}$		

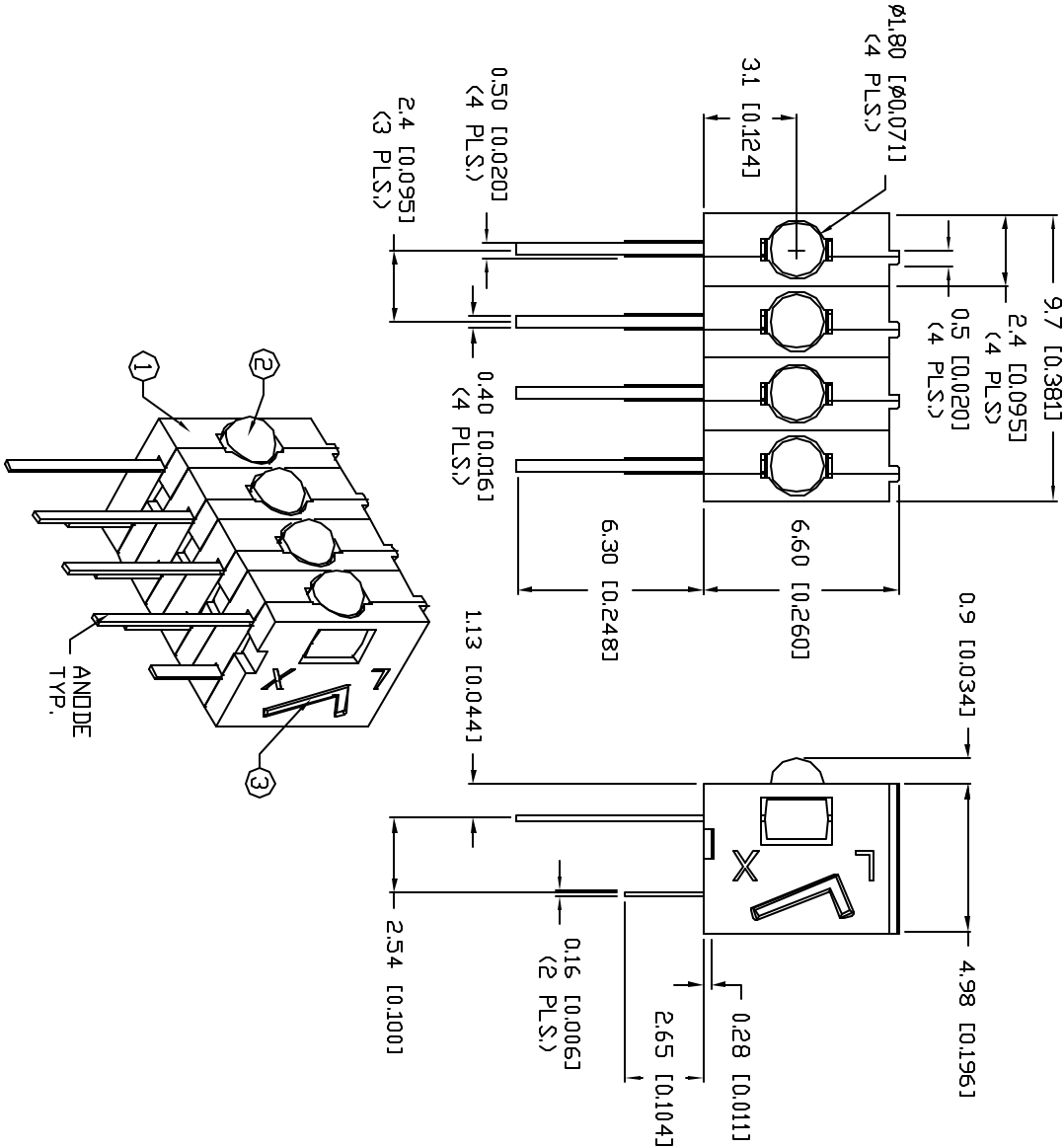
NOTES:

1. SSH-LXH555 HOLDER, BLACK NYLON. (4 PCS.)
2. SSL-LXA225UGD LED. (4 PCS.)
3. SSH-LXH555-SOR.

UNCONTROLLED DOCUMENT

LEAD SIZE=±0.05 (±0.002), LEAD LENGTH=±0.75 (±0.030), UNL=+0.00 PRECISION MAX.=+0.00 PRECISION MIN.=−0.00

*UNLESS OTHERWISE SPECIFIED TOLERANCES PER DECIMAL PRECISION ARE: X=±1 (±0.039), XX=±0.5 (±0.020), XXX=±0.25 (±0.010), XXXX=±0.127 (±0.005).



PART NUMBER

SSF-LXH555UGD-4

REV.

T-1.8mm QUAD RIGHT ANGLE FAULT INDICATOR,
572nm SUPRE ULTRA GREEN LEDS, GREEN DIFFUSED LENS.

CONFIDENTIAL INFORMATION

THE INFORMATION CONTAINED IN THIS DOCUMENT IS THE PROPERTY OF LUMEX INC. EXCEPT AS SPECIFICALLY AUTHORIZED IN WRITING BY LUMEX INC., THE HOLDER OF THIS DOCUMENT SHALL KEEP ALL INFORMATION CONTAINED HEREIN CONFIDENTIAL AND SHALL PROTECT SAME IN WHOLE OR IN PART FROM DISCLOSURE AND DISSEMINATION TO ALL THIRD PARTIES.

RELIABILITY NOTE

OUR MANY YEARS OF EXPERIENCE DATA ACCUMULATION INDICATE THAT SOLDER HEAT IS A MAJOR CAUSE OF EARLY AND FUTURE FAILURE. PLEASE PAY ATTENTION TO YOUR SOLDERING PROCESS.



290 E. HELEN ROAD
PALATINE, IL 60067-6976
PHONE: +1.847.359.2790
US WEB: www.lumex.com
TW WEB: www.lumex.com.tw

DRAWN BY:	CHECKED BY:	APPROVED BY:	DATE:
BC			2.12.01
			PAGE: 1 OF 1
			SCALE: N/A