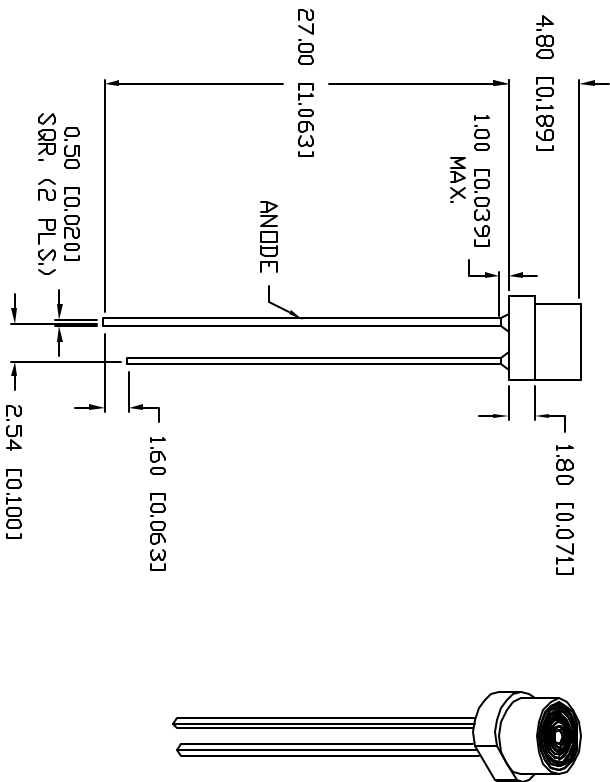
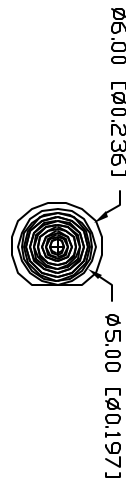


CAUTION: STATIC SENSITIVE DEVICE  
FOLLOW PROPER E.S.D. HANDLING PROCEDURES  
WHEN WORKING WITH THIS PART.



ELECTRO-OPTICAL CHARACTERISTICS I <sub>A</sub> =25°C I <sub>F</sub> =20mA					
PARAMETER	MIN	TYP	MAX	UNITS	TEST COND
PEAK WAVELENGTH		470		nm	
FORWARD VOLTAGE		3.5	4.0	V <sub>F</sub>	I <sub>F</sub> =100μA
REVERSE VOLTAGE	5.0			V <sub>R</sub>	I <sub>F</sub> =20mA
AXIAL INTENSITY		40		cd	
VIEWING ANGLE		100		2x theta	
EMITTED COLOR:		BLUE			
EPOXY LENS FINISH:		BLUE DIFFUSED			

LIMITS OF SAFE OPERATION AT 25°C			
PARAMETER	MAX	UNITS	
PEAK FORWARD CURRENT*	100	mA	
STEADY CURRENT	30	mA	
POWER DISSIPATION	98	mW	
DERATE FROM 25°C	-1.2	mW/°C	
OPERATING, STORAGE TEMP.	-40 TO +85	°C	
SOLDERING TEMP.	+260	°C	
2.0mm FROM BODY		3 SEC. MAX	
* t<10μs			

\*UNLESS OTHERWISE SPECIFIED TOLERANCES PER DECIMAL PRECISION ARE: X=±1 (+0.039), X.X=±0.5 (+0.020), X.XX=±0.25 (+0.010), X.XXX=±0.127 (+0.005), LEAD SIZE=±0.05 (+0.002), LEAD LENGTH=±0.75 (+0.030), MIN= -0.00

REV.

PART NUMBER

SSL-LX433USBD

T-5mm (T-1 3/4) 470nm ULTRA SUPER BLUE LED,  
BLUE DIFFUSED FRESNEL LENS.

CONFIDENTIAL INFORMATION

THE INFORMATION CONTAINED IN THIS DOCUMENT IS THE PROPERTY OF LUMEX INC. EXCEPT AS SPECIFICALLY AUTHORIZED IN WRITING BY LUMEX INC., THE HOLDER OF THIS DOCUMENT SHALL KEEP ALL INFORMATION CONTAINED HEREIN CONFIDENTIAL AND SHALL PROTECT SAME IN WHOLE OR IN PART FROM DISCLOSURE AND OBSERVATION TO ALL THIRD PARTIES.

RELIABILITY NOTE  
OUR MANY YEARS OF EXPERIENCE DATA ACCUMULATION INDICATE THAT SOLDER HEAT IS A MAJOR CAUSE OF EARLY AND FUTURE FAILURE. PLEASE PAY ATTENTION TO YOUR SOLDERING PROCESS.

PART NUMBER  
SSL-LX433USBD

REV.



290 E. HELEN ROAD  
PALATINE, IL 60067-6976  
PHONE: +1.847.359.2790  
US WEB: www.lumex.com  
TW WEB: www.lumex.com.tw

DRAWN BY: BIC  
CHECKED BY:  
APPROVED BY:  
DATE: 4.19.01  
PAGE: 1 OF 1  
SCALE: N/A