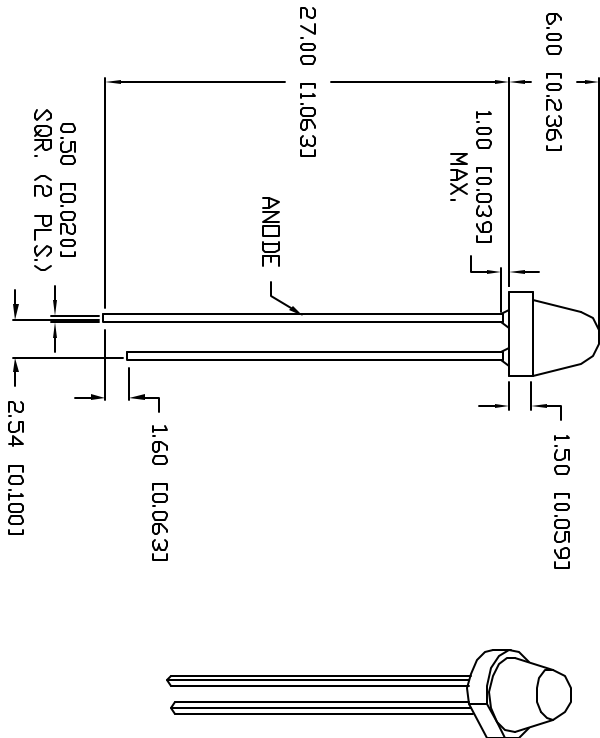
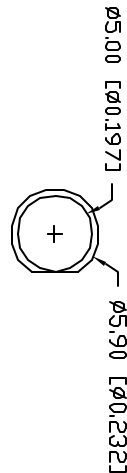


PART NUMBER			REV.
SSL-LX5063GD			B
REV.	E.C.N. NUMBER AND REVISION COMMENTS	DATE	
A	UPDATED SPECS.	11.20.95	
B	E.C.N. #10BRDR. & REDRAWN IN 3D.	4.19.01	



ELECTRO-OPTICAL CHARACTERISTICS I _A =25°C					
PARAMETER	MIN	TYP	MAX	UNITS	TEST COND
PEAK WAVELENGTH		565		nm	
FORWARD VOLTAGE		2.2	2.6	V _f	I _f =100μA
REVERSE VOLTAGE	5.0			V _r	I _r =20mA
AXIAL INTENSITY		30		cd	
VIEWING ANGLE		60		2x theta	
EMITTED COLOR:	GREEN				
EPOXY LENS FINISH:	GREEN DIFFUSED				

LIMITS OF SAFE OPERATION AT 25°C

PARAMETER	MAX	UNITS
PEAK FORWARD CURRENT*	150	mA
STEADY CURRENT	25	mA
POWER DISSIPATION	105	mW
DERATE FROM 25°C	-1.2	mW/°C
OPERATING, STORAGE TEMP.	-40 TO +85	°C
SOLDERING TEMP.	+260	°C
2.0mm FROM BODY	3 SEC. MAX	

* <10μs

*UNLESS OTHERWISE SPECIFIED TOLERANCES PER DECIMAL PRECISION ARE: X=±1 (+0.039), X.X=±0.5 (+0.020), X.X.X=±0.25 (+0.010), X.XXX=±0.127 (+0.005), LEAD SIZE=±0.08 (+0.002), LEAD LENGTH=±0.75 (+0.030), MIN= -0.00 MAX= +0.00 DECIMAL PRECISION

PART NUMBER

SSL-LX5063GD

REV.

B

T=5mm (T=1 3/4) 565nm GREEN LED,
GREEN DIFFUSED LENS.

CONFIDENTIAL INFORMATION

THE INFORMATION CONTAINED IN THIS DOCUMENT IS THE PROPERTY OF LUMEX INC. EXCEPT AS SPECIFICALLY AUTHORIZED IN WRITING BY LUMEX INC., THE HOLDER OF THIS DOCUMENT SHALL KEEP ALL INFORMATION CONTAINED HEREIN CONFIDENTIAL AND SHALL PROTECT SAME IN WHOLE OR IN PART FROM DISCLOSURE AND OSMENATION TO ALL THIRD PARTIES.

RELIABILITY NOTE
OUR MANY YEARS OF EXPERIENCE DATA ACCUMULATION INDICATE THAT SOLDER HEAT IS A MAJOR CAUSE OF EARLY AND FUTURE FAILURE. PLEASE PAY ATTENTION TO YOUR SOLDERING PROCESS.



290 E. HELEN ROAD
PALATINE, IL 60067-6976
PHONE: +1.847.359.2790
US WEB: www.lumex.com
TW WEB: www.lumex.com.tw

DRAWN BY:

BC

CHECKED BY:

APPROVED BY: DATE: 5.18.90

PAGE: 1 OF 1
SCALE: N/A