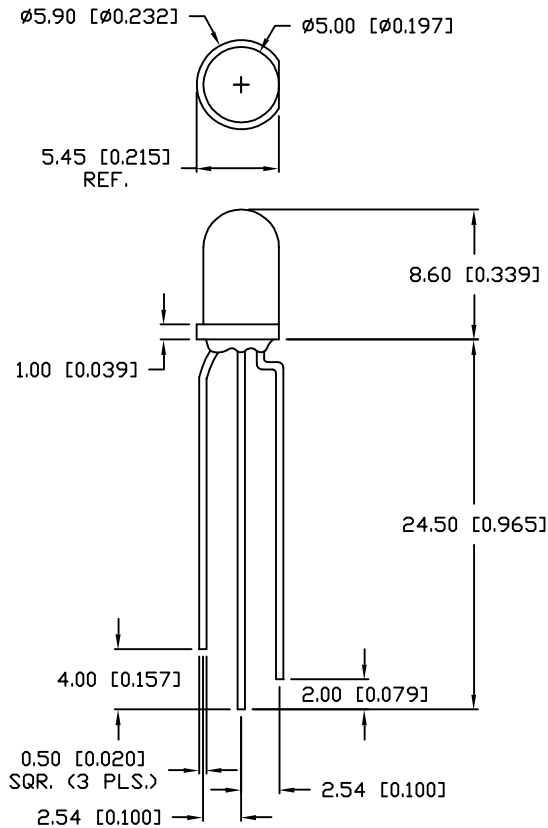


PART NUMBER  
SSL-LX5099LBI-SRD

REV.

C

REV.	E.C.N. NUMBER AND REVISION COMMENTS	DATE
A	E.C.N. #10192./	6-24-96
B	E.C.N. #10BRDR. & REDRAWN./	10-10-97
C	E.C.N. #10470./	10-23-98



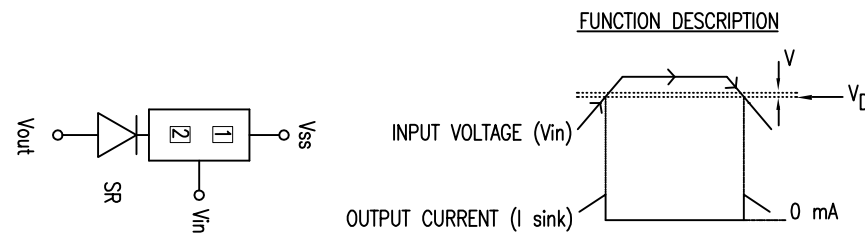
ELECTRO-OPTICAL CHARACTERISTICS  $T_A=25^{\circ}\text{C}$

BATTERIES	3	4	5	6
PEAK WAVELENGTH	660 (RED)			
INPUT VOLTAGE ( $V_{in}$ )	4.5	6.0	7.5	9.0
DETECTION VOLTAGE ( $V_d$ )	3.75	5.0	6.25	7.5
AXIAL INTENSITY ( $\mu\text{cd}$ )*	10	10	10	10
STANDBY CURRENT ( $I_{in}$ )**	5 $\mu\text{A}$	5 $\mu\text{A}$	5 $\mu\text{A}$	5 $\mu\text{A}$
HYSTERESIS VOLTAGE ( $V_{hyst}$ )	150mV	200mV	250mV	300mV
OUTPUT SINK CURRENT ( $I_{sink}$ ***)	10.5 mA	10.5 mA	10.5 mA	10.5 mA
VIEWING ANGLE (TYP.)	60	60	60	60
OPERATING TEMPERATURE	0°C TO 85°C			
STORAGE TEMPERATURE	-40°C TO 100°C			
EMITTEND COLOR	RED			
EPOXY LENS FINISH:	RED DIFFUSED			

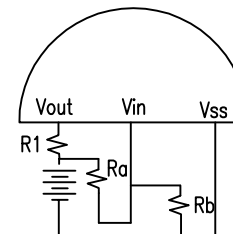
\*TEST CONDITON AT 10.5mA

\*\*TEST CONDITION AT INPUT VOLTAGE PER BATTERY COUNT

\*\*\*TEST CONDITION AT DETECTION VOLTAGE PER BATTERY COUNT



EXTERNAL PARTS CONNECTION



NOTES

- $V_d \approx \frac{R_a + R_b}{R_b} \times 2.5V$
- $V_{hys} \approx \frac{R_a + R_b}{R_b} \times 100mV$
- PLEASE NOTE THAT WHEN VALUE OF  $R_a$  BECOMES EXCESSIVELY LARGE, THE DETECTION VOLTAGE MAY DIFFER FROM THE VALUE CALCULATED BY THE USE OF THE ABOVE FORMULA.
- $R_1$  IS OPTIONAL FOR LIMITING OUTPUT CURRENT.
- $R_a + R_b < \frac{V_{bat}}{I_{in}} \times E\%$ ,  $I_{in} \ll I_R$ ,

E% = RESISTOR TOLERANCE

\*UNLESS OTHERWISE SPECIFIED TOLERANCE IS  $\pm 0.25\text{mm}$  ( $\pm 0.010''$ )

REV.

C

PART NUMBER

SSL-LX5099LBI-SRD

CONFIDENTIAL INFORMATION

THE INFORMATION CONTAINED IN THIS DOCUMENT IS THE PROPERTY OF LUMEX INC. EXCEPT AS SPECIFICALLY AUTHORIZED IN WRITING BY LUMEX INC., THE HOLDER OF THIS DOCUMENT SHALL KEEP ALL INFORMATION CONTAINED HEREIN CONFIDENTIAL AND SHALL PROTECT SAME IN WHOLE OR IN PART FROM DISCLOSURE AND DISSEMINATION TO ALL THIRD PARTIES.

RELIABILITY NOTE

OUR MANY YEARS OF EXPERIENCE DATA ACCUMULATION INDICATE THAT SOLDER HEAT IS A MAJOR CAUSE OF EARLY AND FUTURE FAILURE. PLEASE PAY ATTENTION TO YOUR SOLDERING PROCESS.

**LUMEX**  
INCORPORATED

290 E. HELLEN ROAD  
PALATINE, ILLINOIS 60067  
PHONE: 1-847-359-2790  
WEB: HTTP://WWW.LUMEX.COM

T-5mm (T-1 3/4) LED, LOW BATTERY DETECTOR LED,  
SUPER RED, FOR 3~6 BATTERIES.

DRAWN BY:	CHECKED BY:	APPROVED BY:	DATE: 4-27-96
TM/BC			PAGE: 1 OF 1
			SCALE: N/A