



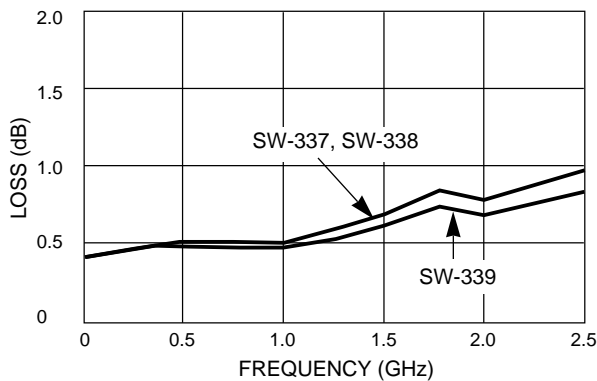
## Absolute Maximum Ratings

Parameter	Absolute Maximum <sup>1</sup>
Max. Input Power	
0.05 GHz	+27 dBm
0.5 – 2.0 GHz	+34 dBm
Control Voltage	+5V, -8.5V
Operating Temperature	-40°C to +85°C
Storage Temperature	-65°C to +150°C

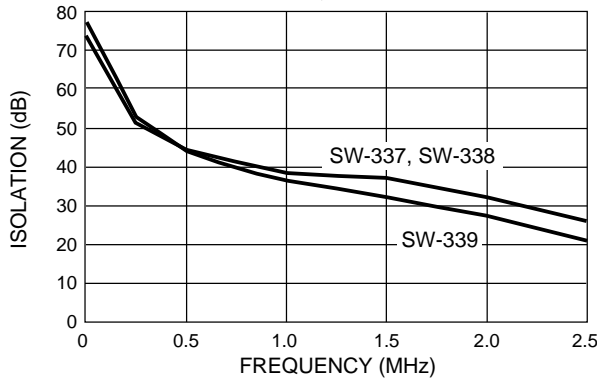
1. Operation of this device above any one of these parameters may cause permanent damage.

## Typical Performance @ +25°C

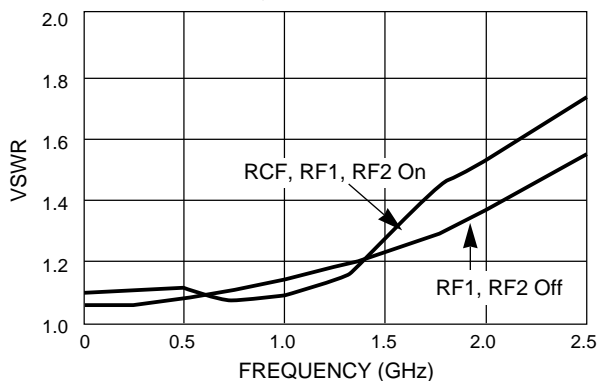
INSERTION LOSS vs FREQUENCY



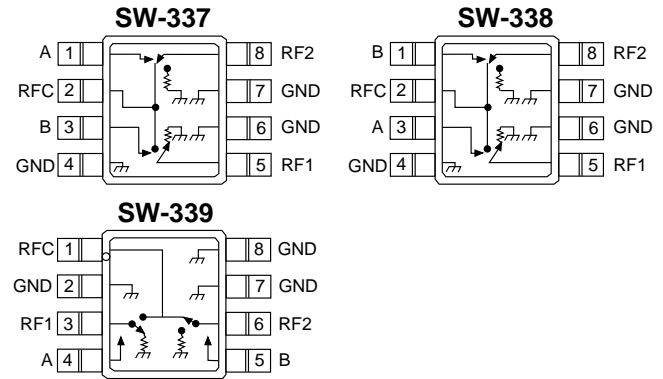
ISOLATION vs FREQUENCY



VSWR vs FREQUENCY



## Functional Schematics



## Pin Configuration

SW-337		SW-338		SW-339	
Pin No.	Description	Pin No.	Description	Pin No.	Description
1	A	1	B	1	RF Common
2	RF Common	2	RF Common	2	GND
3	B	3	A	3	RF1
4	GND	4	GND	4	A
5	RF1	5	RF1	5	B
6	GND	6	GND	6	RF2
7	GND	7	GND	7	GND
8	RF2	8	RF2	8	GND

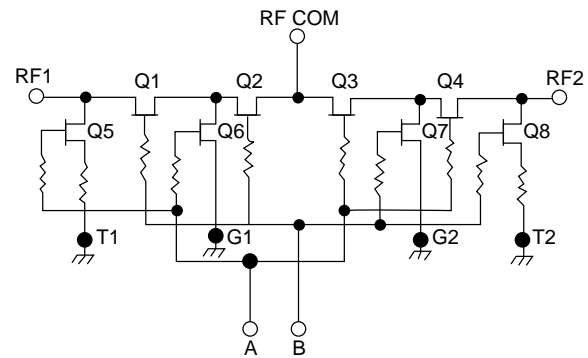
## Truth Table

Control Inputs		Condition of Switch RF Common to Each RF Port	
A	B	RF1	RF2
1	0	ON	OFF
0	1	OFF	ON

"0" – 0 – -0.2V @ 20  $\mu$ A max.

"1" – -5V @ 30  $\mu$ A Typ to -8V @ 720  $\mu$ A max.

## Electrical Schematic



Specifications Subject to Change Without Notice.