

LC374TWN1-65G-A1

Features

Stand Offs

Applications

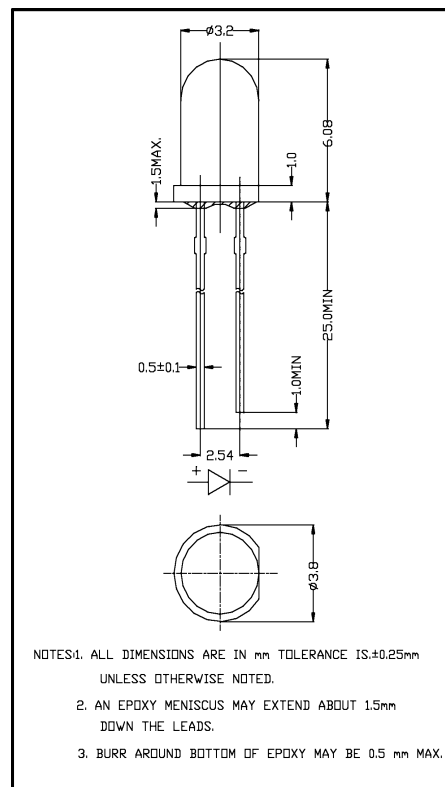
Advertising Signs
Indicators
Illumination Applications
LCD Backlight

Maximum Ratings (Ta=25°C)

Characteristic	Symbol	Max.	Unit
Forward Current	I _F	25	mA
Reverse Voltage	V _R	5	V
Power Dissipation	P _D	100.00	mW
Operating Temperature	T _{opr}	-40 ~ +95	°C
Storage Temperature	T _{stg}	-40 ~ +100	°C
Soldering Temperature	T _{sol}	260	°C
Soldering Time	—	for 3 sec. max	—

Opto-Electrical Characteristics (Ta=25°C)

Characteristic	Symbol	Test Condition	Min	Typ	Max	Unit
Forward Voltage	V _F	I _F =20mA	—	3.40	4.00	V
Reverse Current	I _R	V _R =5V	—	—	100	μA
Luminous Intensity	I _v	I _F =20mA	1100.00	1700.00	—	mcd
Viewing Angle	2θ ^{1/2}	—	—	30°	—	deg.
Peak Wavelength	λ _p	I _F =20mA	—	465	—	nm
Dominant Wavelength	λ _d	I _F =20mA	—	X=.31, Y=.32	—	nm
Spectral Line Half Width	Δλ	I _F =20mA	—	0	—	nm



LC374TWN1-65G-A1 Graphs

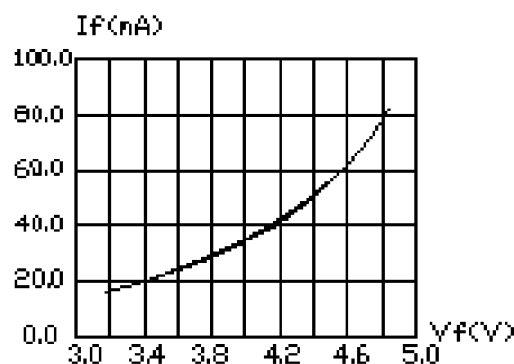


FIG.1 FORWARD CURRENT VS. FORWARD VOLTAGE

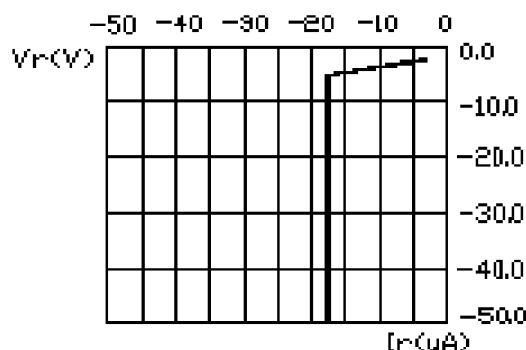


FIG.2 REVERSE CURRENT VS. REVERSE VOLTAGE

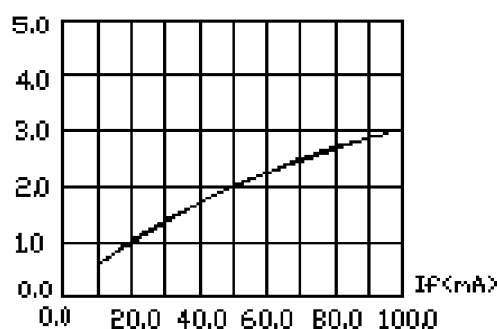


FIG.3 RELATIVE LUMINOUS INTENSITY VS. FORWARD CURRENT

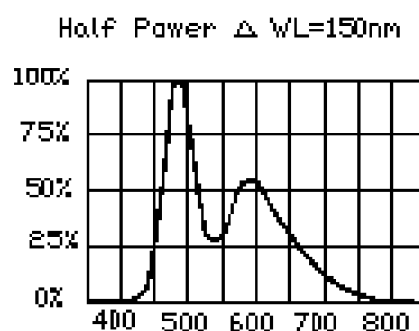


FIG.4 RELATIVE LUMINOUS INTENSITY VS. WAVELENGTH.

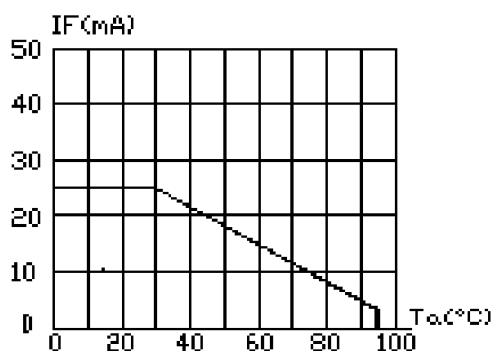


FIG.5 MAXIMUM FORWARD CURRENT VS. AMBIENT TEMPERATURE ($T_{jmax}=105^{\circ}\text{C}$)

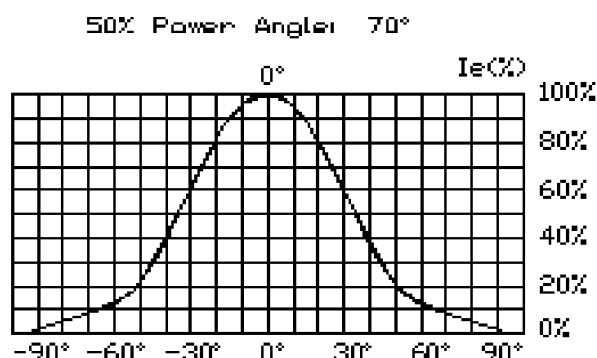


FIG.6 FAR FIELD PATTERN