

LC512PWH1-25H

Features

5mm Package
High Optical Power
Low Current Requirement
Water Clear Lens
High Luminous Intensity



ATTENTION

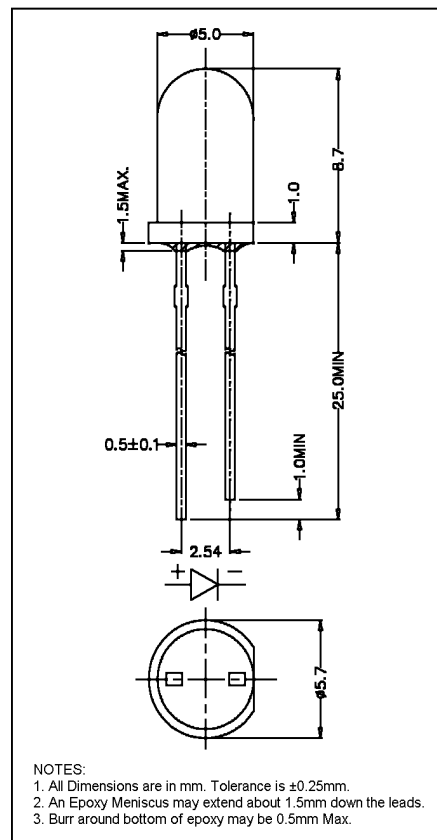
OBSERVE PRECAUTIONS
ELECTROSTATIC
SENSITIVE DEVICES

Maximum Ratings (Ta=25°C)

Characteristic	Symbol	Max.	Unit
Forward Current	I _F	25	mA
Reverse Voltage	V _R	5	V
Power Dissipation	P _D	120.00	mW
Operating Temperature	T _{opr}	-20 ~ +75	°C
Storage Temperature	T _{stg}	-30 ~ +80	°C
Soldering Temperature	T _{sol}	260	°C
Soldering Time	—	for 3 sec. max	—

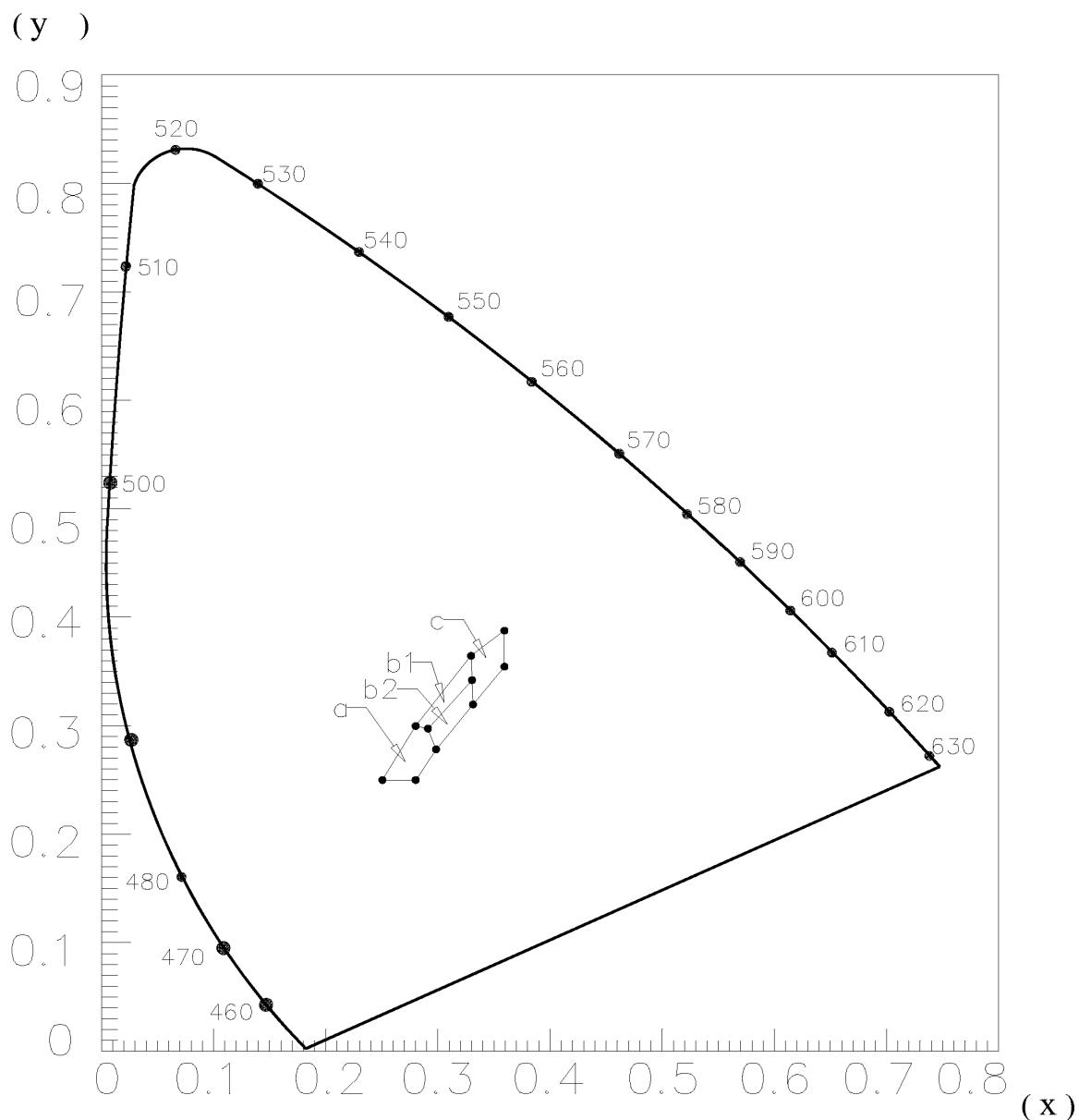
Opto-Electrical Characteristics (Ta=25°C)

Characteristic	Symbol	Test Condition	Min	Typ	Max	Unit
Forward Voltage	V _F	I _F =20mA	3.20	3.60	4.20	V
Reverse Current	I _R	V _R =5V	—	—	100	μA
Luminous Intensity	I _v	I _F =20mA	2130.00	3500.00	—	mcd
Viewing Angle	2θ ^{1/2}	—	—	25°	—	deg.
Peak Wavelength	λ _p	I _F =20mA	—	465	—	nm
Dominant Wavelength	λ _d	I _F =20mA	—	x=.31, y=.32	—	nm
Spectral Line Half Width	Δλ	I _F =20mA	—	28	—	nm



LC512PWH1-25H Graphs

CIE Chromaticity Diagram



LC512PWH1-15H Graphs

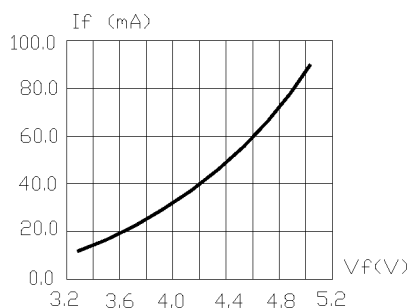


FIG.1 FORWARD CURRENT VS. FORWARD VOLTAGE.

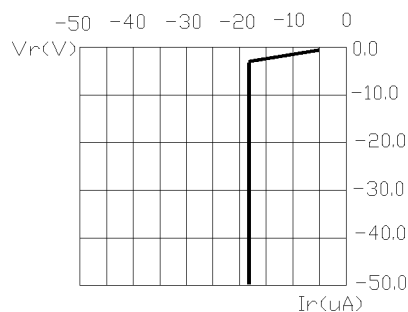


FIG.2 REVERSE CURRENT VS. REVERSE VOLTAGE.

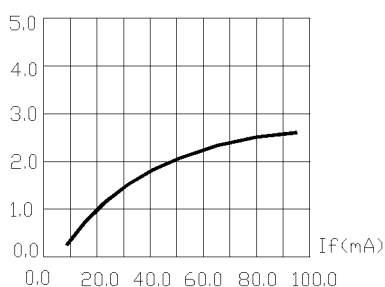


FIG.3 RELATIVE LUMINOUS INTENSITY VS. FORWARD CURRENT.

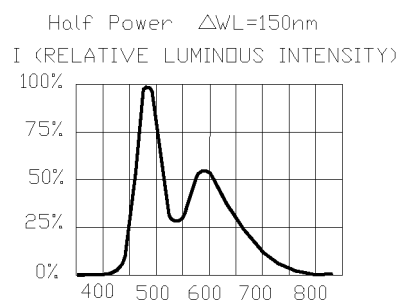


FIG.4 RELATIVE LUMINOUS INTENSITY VS. WAVELENGTH.

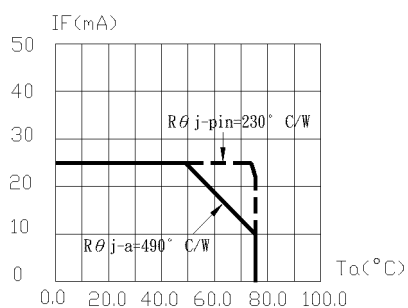


FIG.5 MAXIMUM FORWARD DC CURRENT VS. AMBIENT TEMPERATURE ($T_{jmax}=95^{\circ}C$)

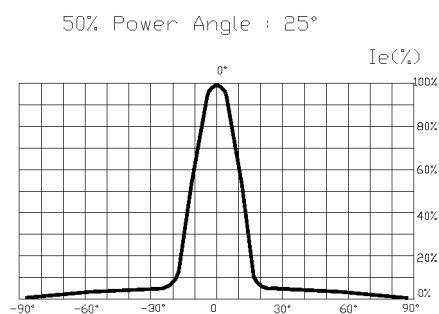


FIG.6 FAR FIELD PATTERN

1. Cathode PAD Area ($0.18 \times 0.18 \text{ inch}^2$)
2. Height above nominal seating plane in inches (0.3inch)