

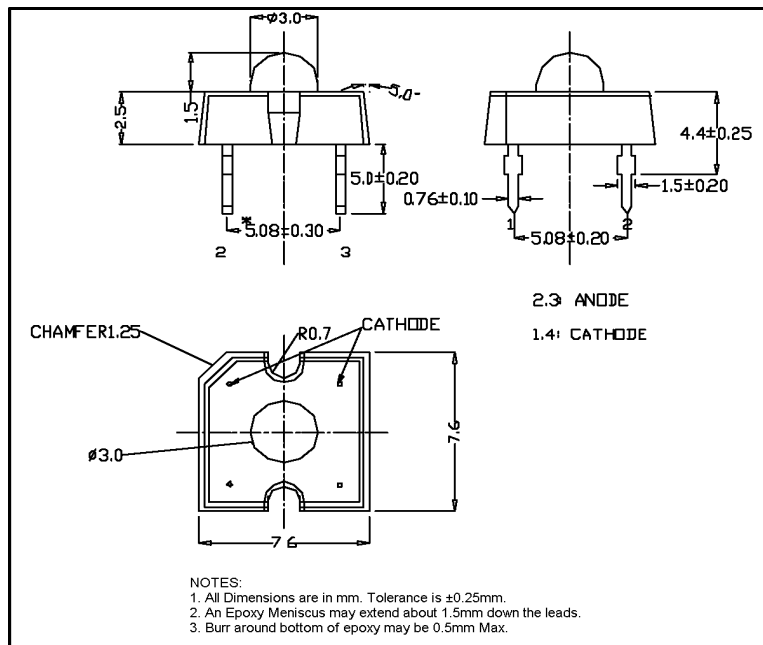
LP377NPG1-70G

Features

Low Profile
4 Pin Plastic Package
Water Clear Lens
High Flux Output
High Current Operation

Applications

Automotive Interior Exterior Lighting
Rail Signals
Traffic Control Devices
Channel Letters
Strip Lighting
Architectural Lighting



Maximum Ratings (Ta=25°C)

Characteristic	Symbol	Max.	Unit
Forward Current	I_F	30	mA
Reverse Voltage	V_R	5.00	V
Power Dissipation	P_D	120.00	mW
Operating Temperature	T_{opr}	-20 ~ +75	°C
Storage Temperature	T_{stg}	-30 ~ +80	°C
Soldering Temperature	T_{sol}	260	°C
Soldering Time	—	for 3 sec. max	—



ATTENTION

OBSERVE PRECAUTIONS
ELECTROSTATIC
SENSITIVE DEVICES

Opto-Electrical Characteristics (Ta=25°C)

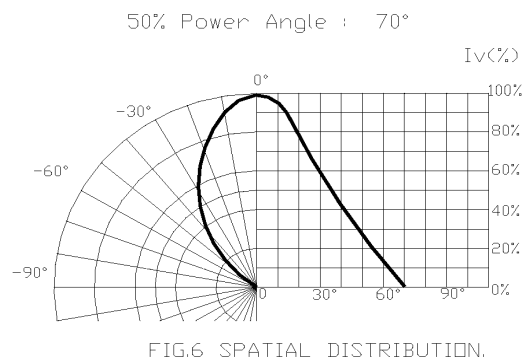
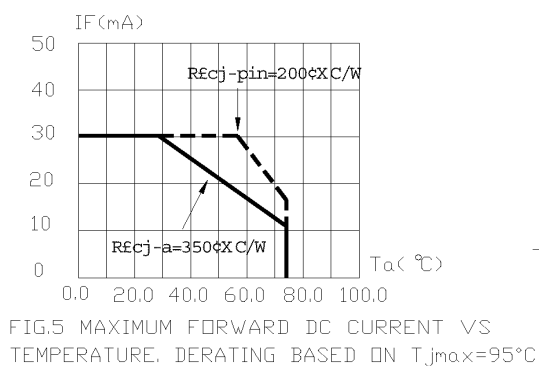
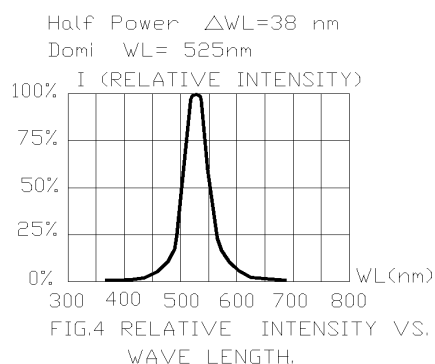
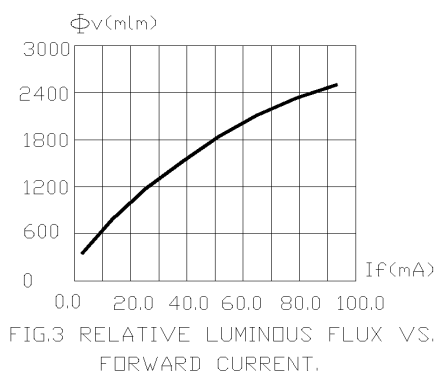
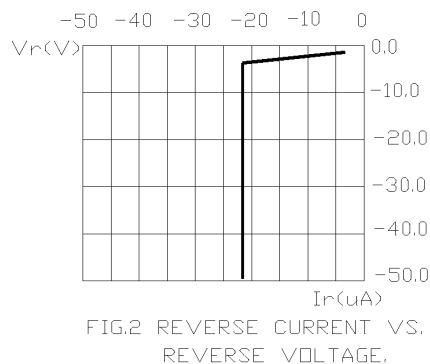
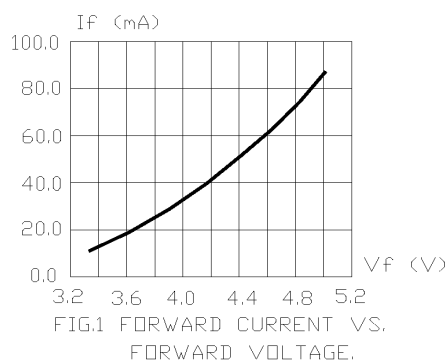
Characteristic	Symbol	Test Condition	Min	Typ	Max	Unit
Forward Voltage	V_F	$I_F=30\text{mA}$	3.60	4.00	4.60	V
Reverse Current	I_R	$V_R=5\text{V}$	—	—	100	μA
Luminous Flux	Φ	$I_F=30\text{mA}$	600.00	1300.00	—	mlm
Viewing Angle	$2\theta^{1/2}$	—	—	70°	—	deg.
Peak Wavelength	λ_p	$I_F=30\text{mA}$	—	520	—	nm
Dominant Wavelength	λ_d	$I_F=30\text{mA}$	—	525	—	nm
Spectral Line Half Width	$\Delta\lambda$	$I_F=30\text{mA}$	—	38	—	nm

Company Headquarters
3 Northway Lane North
Latham, New York 12110
Toll Free: 800.984.5337
Fax: 518.785.4725



Web: www.marktechopto.com | Email: info@marktechopto.com

California Sales Office:
950 South Coast Drive, Suite 225
Costa Mesa, California 92626
Toll Free: 800.984.5337
Fax: 714.850.9314



1. Cathode PAD Area ($0.18 \times 0.18 \times 2 \text{ inch}^2$)
2. Height above nominal seating plane in inches (0.3inch)