

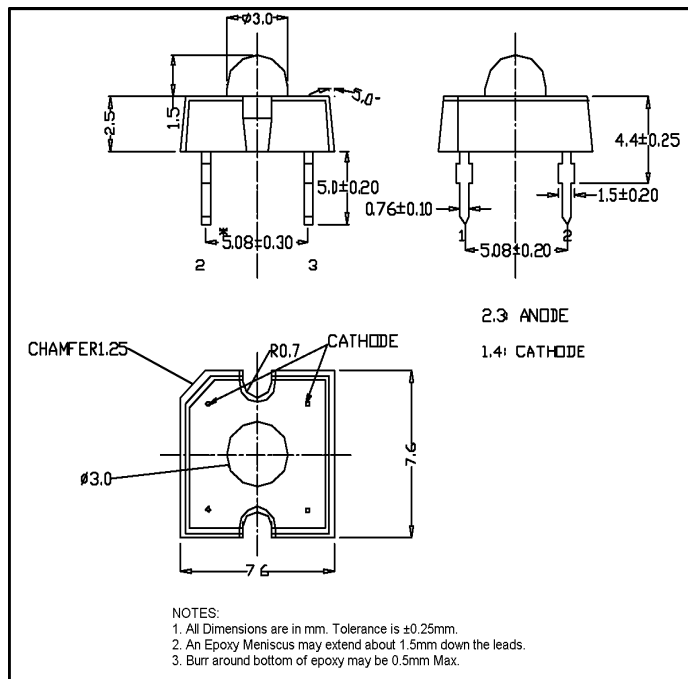
LP377PWH1-90G

Features

4 Pin Plastic Package
High Current Operation
High Flux Output
Low Profile
Water Clear Lens

Applications

Illuminator
Indicators
Architectural Lighting
Channel Letters
Strip Lighting



Maximum Ratings ($T_a=25^\circ\text{C}$)

Characteristic	Symbol	Max.	Unit
Forward Current	I_F	30	mA
Reverse Voltage	V_R	5	V
Power Dissipation	P_D	140.00	mW
Operating Temperature	T_{opr}	$-40 \sim +100$	$^\circ\text{C}$
Storage Temperature	T_{stg}	$-40 \sim +100$	$^\circ\text{C}$
Soldering Temperature	T_{sol}	260	$^\circ\text{C}$
Soldering Time	—	for 3 sec. max	—



ATTENTION
OBSERVE PRECAUTIONS
ELECTROSTATIC
SENSITIVE DEVICES

Opto-Electrical Characteristics ($T_a=25^\circ\text{C}$)

Characteristic	Symbol	Test Condition	Min	Typ	Max	Unit
Forward Voltage	V_F	$I_F=30\text{mA}$	—	4.00	4.60	V
Reverse Current	I_R	$V_R=5\text{V}$	—	—	100	μA
Luminous Intensity	I_v	$I_F=30\text{mA}$	390.00	770.00	—	mcd
Viewing Angle	$2\theta^{1/2}$	—	—	90°	—	deg.
Peak Wavelength	λ_p	$I_F=30\text{mA}$	—	465	—	nm
Dominant Wavelength	λ_d	$I_F=30\text{mA}$	—	$x=.31$, $y=.32$	—	nm
Spectral Line Half Width	$\Delta\lambda$	$I_F=30\text{mA}$	—	28	—	nm

Company Headquarters
3 Northway Lane North
Latham, New York 12110
Toll Free: 800.984.5337
Fax: 518.785.4725



Web: www.marktechopto.com | Email: info@marktechopto.com

California Sales Office:
950 South Coast Drive, Suite 225
Costa Mesa, California 92626
Toll Free: 800.984.5337
Fax: 714.850.9314

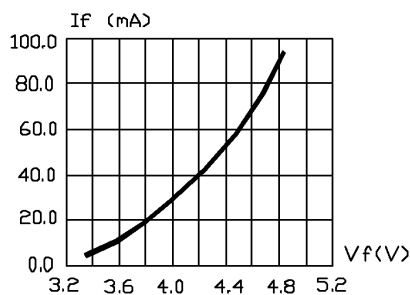


FIG.1 FORWARD CURRENT VS. FORWARD VOLTAGE.

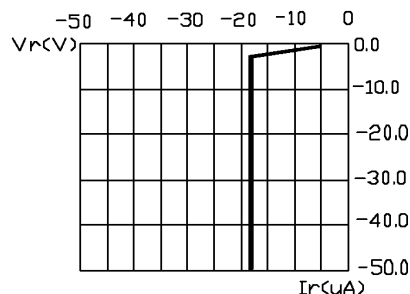


FIG.2 REVERSE CURRENT VS. REVERSE VOLTAGE.

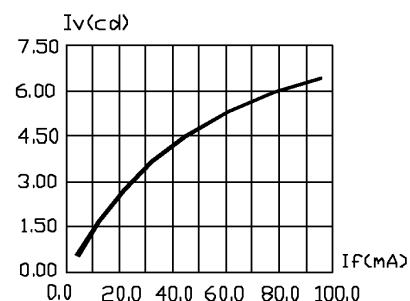


FIG.3 RELATIVE LUMINOUS INTENSITY VS. FORWARD CURRENT.

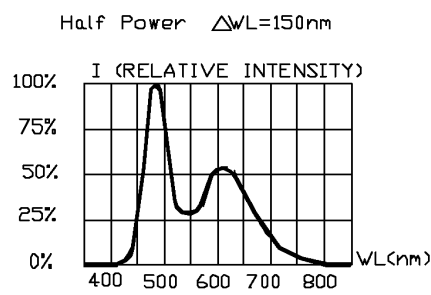


FIG.4 RELATIVE INTENSITY VS. WAVE LENGTH.

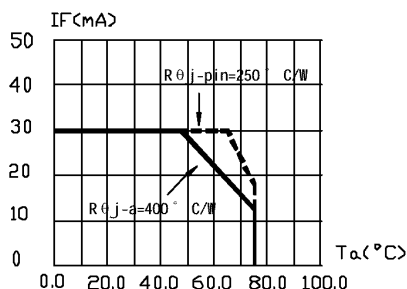


FIG.5 MAXIMUM FORWARD DC CURRENT VS AMBIENT TEMPERATURE . DERATING BASED ON $T_{jmax}=95^{\circ}C$

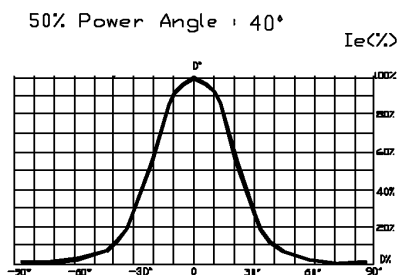


FIG.6 SPATIAL DISTRIBUTION.

1. Cathode PAD Area ($0.18 \times 0.18 \times 2inch^2$)
2. Height above nominal seating plane in inches(0.3inch)

LP377PWH1 90G Graphs

CIE Chromaticity Diagram

