

SMA COUPLERS, DIRECTIONAL 200-500 MHz, STRIPLINE

SERIES CO

GENERAL INFORMATION

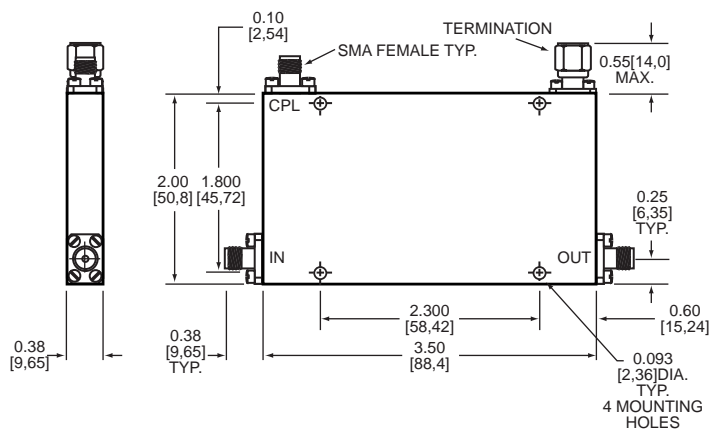
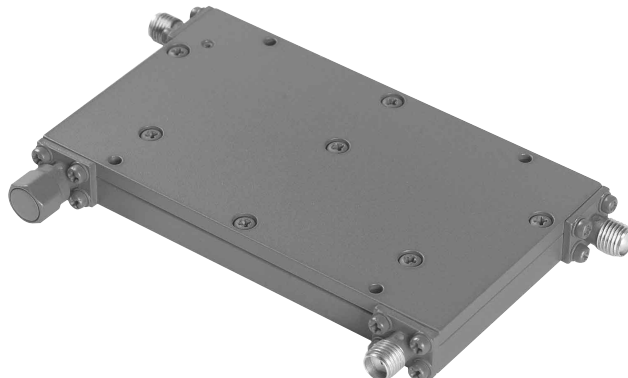
KDI/Triangle's Stripline Couplers, Series CO, cover 6, 10, 20, and 30 dB coupling values. These units feature high directivity and low VSWR and are conservatively rated to ensure the most reliable service and performance under severe environmental conditions.

GENERAL SPECIFICATIONS

Frequency Range:	200-500 MHz
RF Impedance:	50 Ohms
Operating Temperature:	-55°C to +85°C
Environment:	MIL-E-5400
Connectors:	SMA

Notes:

1. The peak and average power handling capability of the couplers apply if the main line is terminated in a 1.25 maximum VSWR for the 6 and 10 dB couplers, and in a 1.75 maximum VSWR for the 20 and 30 dB couplers.
2. Rugged 4 hole connector construction insures mechanical superiority.
3. A 50 ohm termination is supplied on each unit delivered. Power rating is 1.0 watts at +25°C.



ELECTRICAL PERFORMANCE Single Section Directional Couplers CO Series

Model No.	Frequency Range Ghz	Nominal Coupling dB	Deviation from Nominal Coupling vs. Frequency dB	Minimum Directivity dB	Maximum Prim/Sec VSWR	Maximum Insertion Loss Above Coupling Loss dB	Minimum Peak Power (Note 1) kW	Minimum Avg. Power (Note 1) Watts	Outline Fig.
CO-246	200-400	6±.5	±0.7	22	1.20	0.15	10	50	1
CO-241	200-400	10±.5	±0.8	22	1.20	0.15	10	50	1
CO-242	200-400	20±.5	±1.0	22	1.20	0.15	10	50	1
CO-243	200-400	30±.5	±1.0	22	1.20	0.15	10	50	1
CO-256	250-500	6±.5	±0.7	22	1.20	0.15	10	50	1
CO-251	250-500	10±.5	±0.8	22	1.20	0.15	10	50	1
CO-252	250-500	20±.5	±1.0	22	1.20	0.15	10	50	1
CO-253	250-500	30±.5	±1.0	22	1.20	0.15	10	50	1

KEY: Inches[Millimeters] .XX ±.03 .XXX ±.010 [.X ±0.8 .XX ±0.25]



KDI INTEGRATED PRODUCTS

60 South Jefferson Road, Whippany, NJ 07981
Tel: 973-887-8100 • Fax: 973-884-0445
email: sales@mcekti-integrated.com
See us on the web @ www.mcekti-integrated.com

