

0.5–18.0 GHz

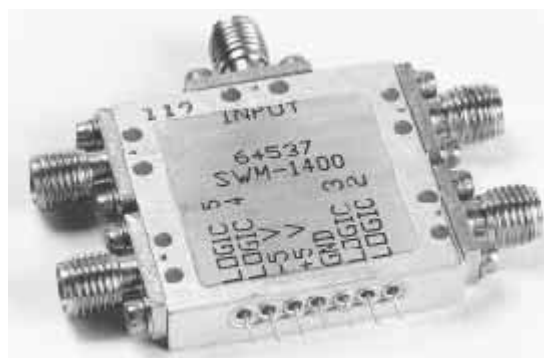
MODEL SWM-1400

The Model SWM-1400 SP4T PIN Diode switch operates over the full frequency range 0.5–18.0 GHz in a single unit. KDI/Triangle has integrated microstrip soft substrate with thick film hybrid drivers, which are designed and fabricated “in-house”

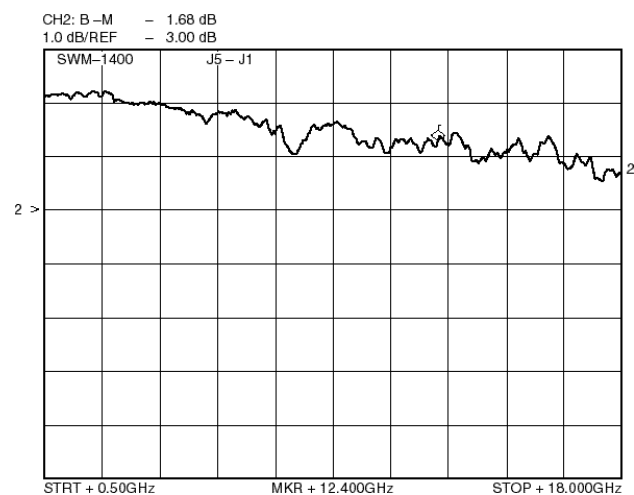
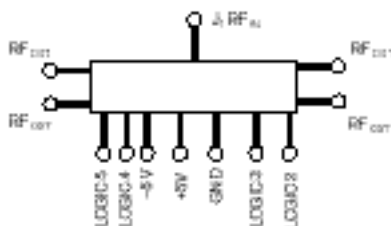
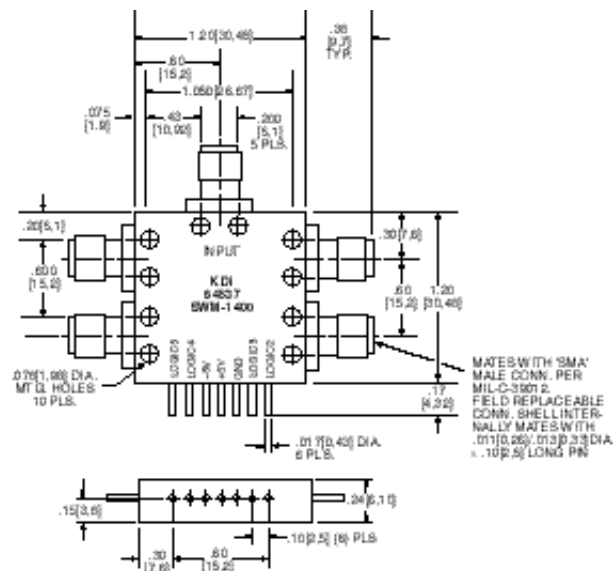
The housing is epoxy sealed to meet the gross leak requirements of MIL-STD-883. SMA connectors are removable.

Model:	SWM-1400
Frequency Range:	0.5–18 GHz
DC Requirements:	±5V DC at ±175 mA
Logic:	TTL Compatible, Logic “0” enables thru path
Temperature:	55° to 85°C, operating –65° to +125°C, storage
Switching Speed:	135 nsec. maximum 50%T ² L to 90%/10% RF Rise/Fall time= 50 nsec. Maximum
VSWR:*	2:1 maximum (on only)
RF Power:	20 dBm maximum
SMA Connectors:	Removable

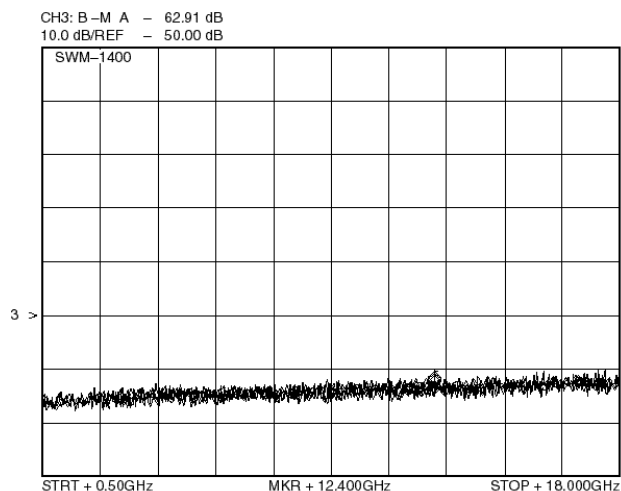
Frequency (GHz)	Isolation (dB minimum)	Insertion Loss* dB maximum
0.5-18	60	3.0



New! Absorptive Model SWM-1400A available, insertion loss is 3.7dB maximum and the VSWR is 2.0:1 maximum under all conditions. "on/off"



INSERTION LOSS



ISOLATION

KEY: Inches[Millimeters] .XX ±.03 .XXX ±.010 [.X ±.8 .XX ±.25]



KDI INTEGRATED PRODUCTS

60 South Jefferson Road, Whippany, NJ 07981
Tel: 973-887-8100 • Fax: 973-884-0445
email: sales@mcekdi-integrated.com
See us on the web @ www.mcekdi-integrated.com

