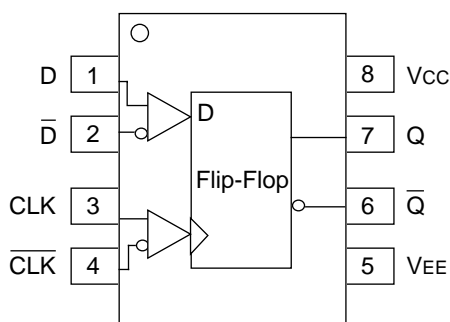


## FEATURES

- 365ps propagation delay
- 2.0GHz toggle frequency
- Internal 75K $\Omega$  input pull-down resistors
- Available in 8-pin SOIC package

## PIN CONFIGURATION/BLOCK DIAGRAM



SOIC  
TOP VIEW

## PIN NAMES

Pin	Function
D	Data Input
CLK	Clock Input
Q	Data Output

## TRUTH TABLE<sup>(1)</sup>

D	CLK	Q
L	Z	L
H	Z	H

### NOTE:

1. Z = LOW-to-HIGH transition.

## DESCRIPTION

The SY10/100EL52 are differential data, differential clock D flip-flops. These devices are functionally equivalent to the E452 devices, with higher performance capabilities. With propagation delays and output transition times significantly faster than the E452, the EL52 is ideally suited for those applications which require the ultimate in AC performance.

Data enters the master portion of the flip-flop when the clock is LOW and is transferred to the slave, and thus the outputs, upon a positive transition of the clock. The differential clock inputs also allow the EL52 to be used as a negative edge triggered device.

The EL52 employs input clamping circuitry so that, under open input conditions (pulled down to VEE), the outputs of the device will remain stable.

**DC ELECTRICAL CHARACTERISTICS**V<sub>EE</sub> = V<sub>EE</sub> (Min.) to V<sub>EE</sub> (Max.); V<sub>CC</sub> = GND

Symbol	Parameter	T <sub>A</sub> = -40°C			T <sub>A</sub> = 0°C			T <sub>A</sub> = +25°C			T <sub>A</sub> = +85°C			Unit
		Min.	Typ.	Max.	Min.	Typ.	Max.	Min.	Typ.	Max.	Min.	Typ.	Max.	
I <sub>EE</sub>	Power Supply Current	10EL —	21	25	17	21	25	17	21	25	17	21	25	mA
V <sub>EE</sub>	Power Supply Voltage	10EL -4.75	-5.2	-5.5	-4.75	-5.2	-5.5	-4.75	-5.2	-5.5	-4.75	-5.2	-5.5	V
I <sub>IH</sub>	Input HIGH Current	—	—	150	—	—	150	—	—	150	—	—	150	μA

**AC ELECTRICAL CHARACTERISTICS**V<sub>EE</sub> = V<sub>EE</sub> (Min.) to V<sub>EE</sub> (Max.); V<sub>CC</sub> = GND

Symbol	Parameter	T <sub>A</sub> = -40°C			T <sub>A</sub> = 0°C			T <sub>A</sub> = +25°C			T <sub>A</sub> = +85°C			Unit
		Min.	Typ.	Max.	Min.	Typ.	Max.	Min.	Typ.	Max.	Min.	Typ.	Max.	
f <sub>MAX</sub>	Maximum Toggle Frequency	1.8	2.5	—	2.2	2.8	—	2.2	2.8	—	2.2	2.8	—	GHz
t <sub>PLH</sub> t <sub>PHL</sub>	Propagation Delay to Output CLK	235	335	515	275	365	465	275	365	465	320	410	510	ps
t <sub>S</sub>	Set-up Time	125	0	—	125	0	—	125	0	—	125	0	—	ps
t <sub>H</sub>	Hold Time	150	50	—	150	50	—	150	50	—	150	50	—	ps
t <sub>PW</sub>	Minimum Pulse Width	400	—	—	400	—	—	400	—	—	400	—	—	ps
V <sub>PP</sub>	Minimum Input Swing <sup>(1)</sup>	150	—	—	150	—	—	150	—	—	150	—	—	mV
V <sub>CMR</sub>	Common Mode Range <sup>(2)</sup>													V
	D (10EL)	-0.4	—	-1.6	-0.4	—	-1.6	-0.4	—	-1.6	-0.4	—	-1.6	
	D (100EL)	-0.4	—	-1.2	-0.4	—	-1.2	-0.4	—	-1.2	-0.4	—	-1.2	
	CLK (10EL)	-0.6	—	(3)	-0.6	—	(3)	-0.6	—	(3)	-0.6	—	(3)	
	CLK (100EL)	-0.8	—	(3)	-0.8	—	(3)	-0.8	—	(3)	-0.8	—	(3)	
t <sub>r</sub> t <sub>f</sub>	Output Rise/Fall Times Q (20% to 80%)	100	225	350	100	225	350	100	225	350	100	225	350	ps

**NOTES:**

1. Minimum input swing for which AC parameters are guaranteed.
2. The CMR range is referenced to the most positive side of the differential input signal. Normal operation is obtained if the HIGH level falls within the specified range and the peak-to-peak voltage lies between V<sub>PP</sub> min. and 1V.
3. The lower end of the CMR range is dependent on V<sub>EE</sub> and is equal to V<sub>EE</sub> + 3.0V.

**PRODUCT ORDERING CODE**

Ordering Code	Package Type	Operating Range	Marking Code
SY10EL52ZC	Z8-1	Commercial	HEL52
SY10EL52ZCTR*	Z8-1	Commercial	HEL52
SY100EL52ZC	Z8-1	Commercial	XEL52
SY100EL52ZCTR*	Z8-1	Commercial	XEL52

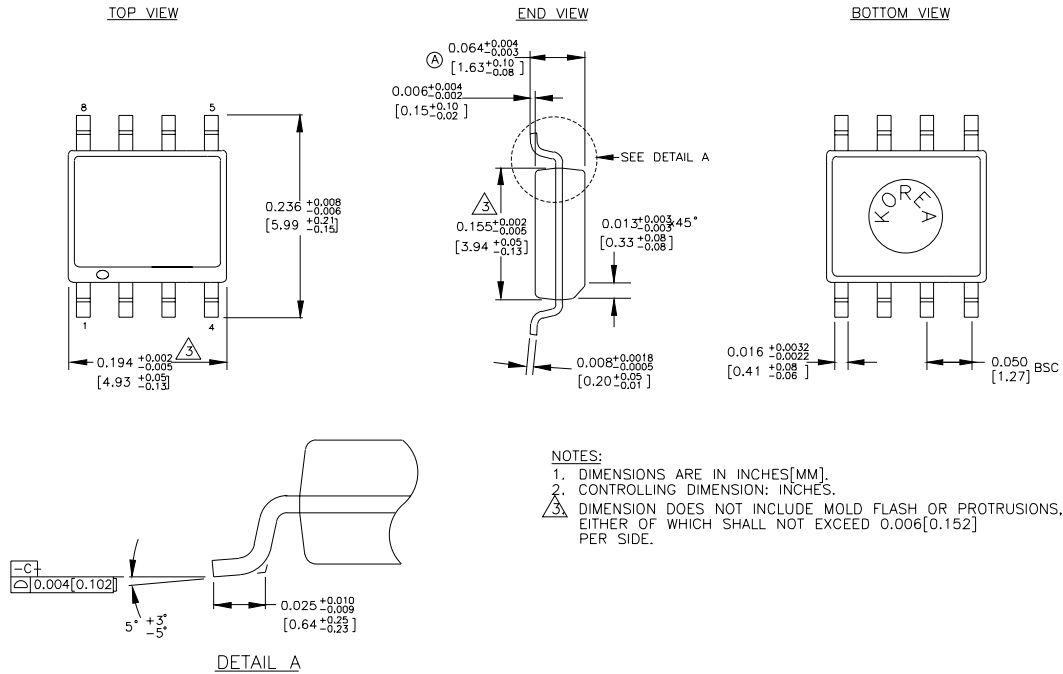
\*Tape and Reel

**Note 1.** Recommended for new designs.

Ordering Code	Package Type	Operating Range	Marking Code
SY10EL52ZI	Z8-1	Industrial	HEL52
SY10EL52ZITR*	Z8-1	Industrial	HEL52
SY100EL52ZI	Z8-1	Industrial	XEL52
SY100EL52ZITR*	Z8-1	Industrial	XEL52

\*Tape and Reel

## 8 LEAD SOIC .150" WIDE (Z8-1)



Rev. 03

---

**MICREL, INC. 1849 FORTUNE DRIVE SAN JOSE, CA 95131 USA**TEL + 1 (408) 944-0800 FAX + 1 (408) 944-0970 WEB <http://www.micrel.com>

The information furnished by Micrel in this datasheet is believed to be accurate and reliable. However, no responsibility is assumed by Micrel for its use.  
Micrel reserves the right to change circuitry and specifications at any time without notification to the customer.

Micrel Products are not designed or authorized for use as components in life support appliances, devices or systems where malfunction of a product can reasonably be expected to result in personal injury. Life support devices or systems are devices or systems that (a) are intended for surgical implant into the body or (b) support or sustain life, and whose failure to perform can be reasonably expected to result in a significant injury to the user. A Purchaser's use or sale of Micrel Products for use in life support appliances, devices or systems is at Purchaser's own risk and Purchaser agrees to fully indemnify

Micrel for any damages resulting from such use or sale.

© 2003 Micrel, Incorporated.

---