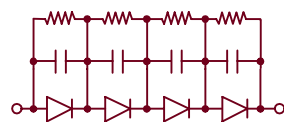
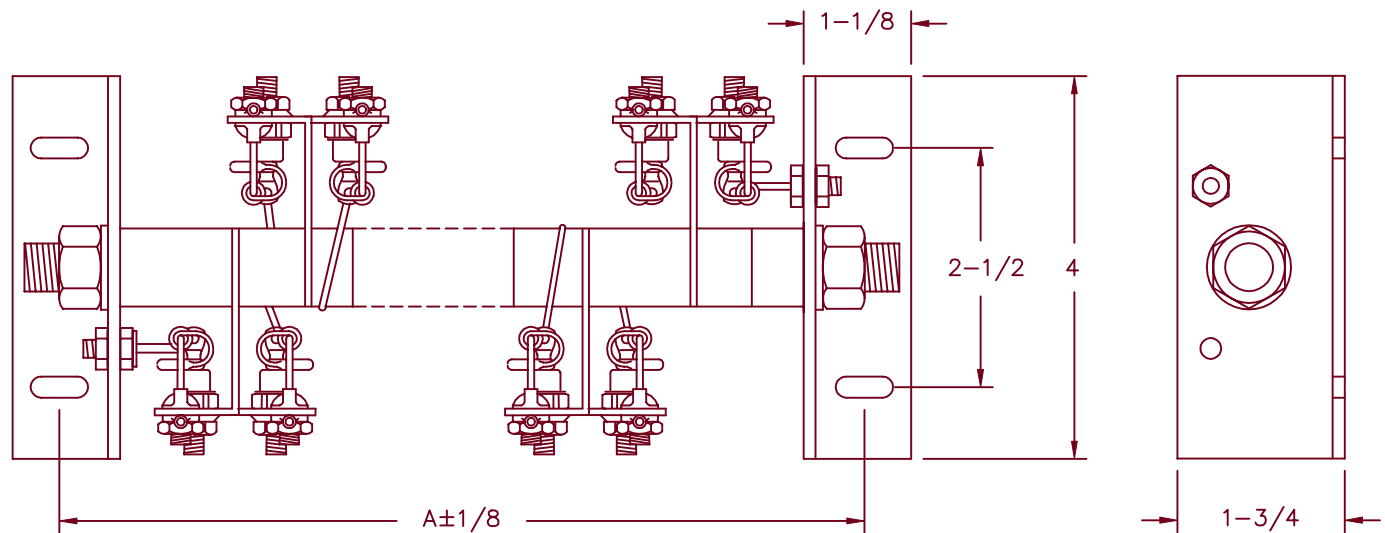
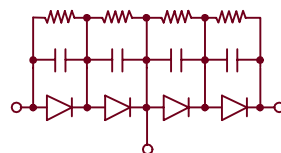


# High Voltage Rectifier Assembly CHV21 Series



H = Halfwave



D = Doubler

Mounting: Horizontal (convection cooling)

Horizontal or vertical (forced air or oil)

DC output rating— 8 Amps/25°C convection cooled  
— 15 Amps/40°C forced air cooled  
@ 1000 LFM

— 22.5 Amps/40°C oil cooled

Peak Reverse voltage— from 8KV to 80KV

CATALOG NUMBER	PRV RATING KV	DIMENSION A
CHV21*08	8	4-3/4
CHV21*12	12	5-7/8
CHV21*16	16	7
CHV21*20	20	8-1/8
CHV21*24	24	9-1/4
CHV21*28	28	10-3/8
CHV21*32	32	11-1/2
CHV21*36	36	12-5/8
CHV21*40	40	13-3/4
CHV21*44	44	14-7/8
CHV21*48	48	16-5/8
CHV21*52	52	17-1/8
CHV21*56	56	18-1/4
CHV21*60	60	19-3/8
CHV21*64	64	20-1/2
CHV21*68	68	21-5/8
CHV21*72	72	22-3/4
CHV21*76	76	23-7/8
CHV21*80	80	25

\*Add H or D For doublers add 1" to dimension A

- Single Phase Halfwave Or Doubler
- Gold Iridited Aluminum Heatsinks
- Each Diode is R-C Compensated
- 250 Amperes Surge Current (1 Cycle)
- Resistive - Inductive Load. Derate 20% for Capacitive Loads

3-8-01 Rev. IR

# CHV21

