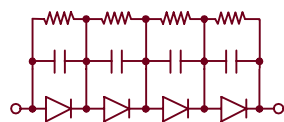
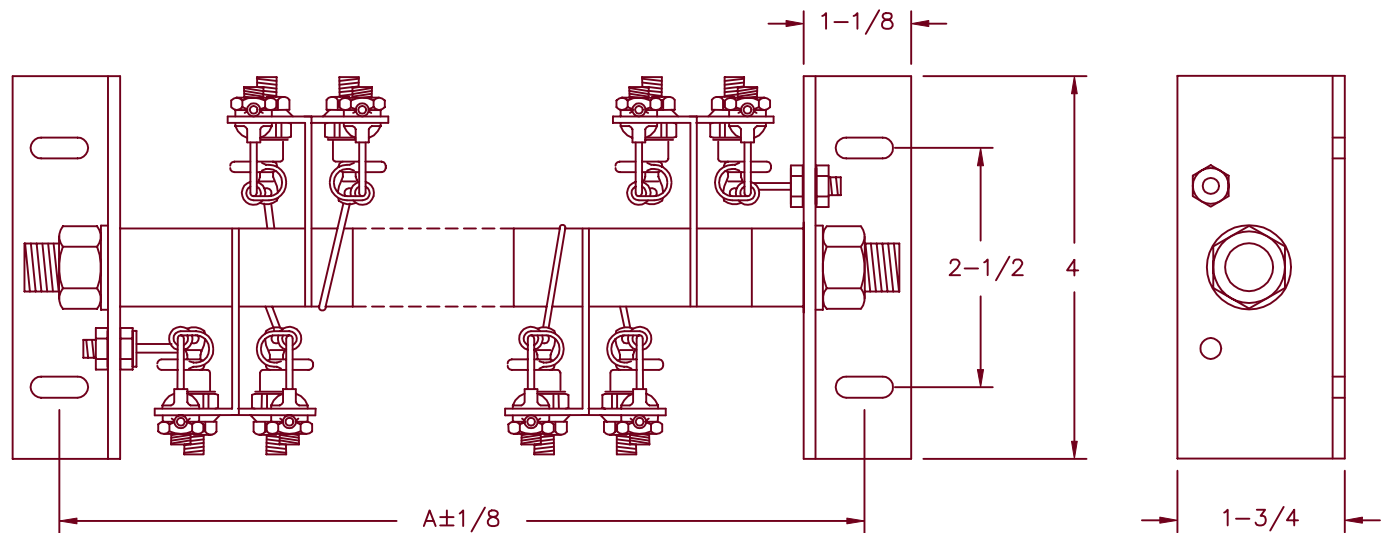
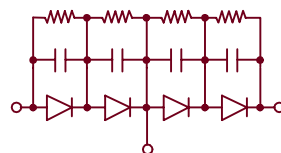


# High Voltage Rectifier Assembly CHV37 Series



H = Halfwave



D = Doubler

Mounting: Horizontal (convection cooling)

Horizontal or vertical (forced air or oil)

DC output rating—15 Amps/25°C convection cooled

—38 Amps/40°C forced air cooled

@ 1000 LFM

—57 Amps/40°C oil cooled

Peak Reverse voltage— from 8KV to 80KV

| CATALOG NUMBER | PRV RATING KV | DIMENSION A |
|----------------|---------------|-------------|
| CHV37*08       | 8             | 4-3/4       |
| CHV37*12       | 12            | 5-7/8       |
| CHV37*16       | 16            | 7           |
| CHV37*20       | 20            | 8-1/8       |
| CHV37*24       | 24            | 9-1/4       |
| CHV37*28       | 28            | 10-3/8      |
| CHV37*32       | 32            | 11-1/2      |
| CHV37*36       | 36            | 12-5/8      |
| CHV37*40       | 40            | 13-3/4      |
| CHV37*44       | 44            | 14-7/8      |
| CHV37*48       | 48            | 16-5/8      |
| CHV37*52       | 52            | 17-1/8      |
| CHV37*56       | 56            | 18-1/4      |
| CHV37*60       | 60            | 19-3/8      |
| CHV37*64       | 64            | 20-1/2      |
| CHV37*68       | 68            | 21-5/8      |
| CHV37*72       | 72            | 22-3/4      |
| CHV37*76       | 76            | 23-7/8      |
| CHV37*80       | 80            | 25          |

\*Add H or D For doublers add 1" to dimension A

- Single Phase Halfwave Or Doubler
- Gold Iridited Aluminum Heatsinks
- Each Diode is R-C Compensated
- 1500 Amperes Surge Current (1 Cycle)
- Resistive – Inductive Load. Derate 20% for Capacitive Loads

3-8-01 Rev. IR

# CHV37

