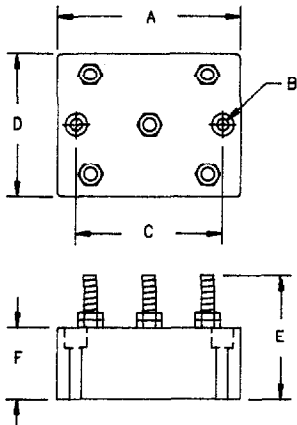


# 12 Amp Encapsulated Assemblies EH Series



Dimensions			
	Inches	Millimeters	Notes
A	2.25	57.2	1
B	---	---	
C	1.75	44.5	
D	1.75	44.5	
E	1.313	33.35	
F	.875	22.23	

Note 1: Mounting hole .172 (4.37 mm) Dia.

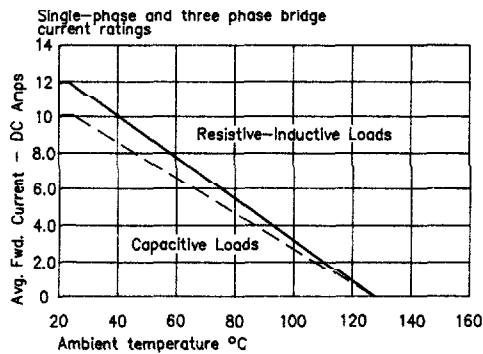
Microsemi Catalog Number		Max. PRV Rating Per Circuit Arm
Single Phase	Three Phase	
EH*1B1	EH*1Z1	100
EH*2B1	EH*2Z1	200
EH*3B1	EH*3Z1	300
EH*4B1	EH*4Z1	400
EH*5B1	EH*5Z1	500
EH*6B1	EH*6Z1	600
EH*7B1	EH*7Z1	700
EH*8B1	EH*8Z1	800
EH*9B1	EH*9Z1	900
EH*10B1	EH*10Z1	1000
EH*12B1	EH*12Z1	1200
EH*14B1	EH*14Z1	1400
EH*16B1	EH*16Z1	1600

\*Add S for Stud Terminal or F for Faston Terminal

- High current encapsulated assembly
- Single and three phase available
- Full Wave Bridge rating of 1600 PRV
- Completely sealed, compact, corrosion and moisture resistant
- Available in a variety of circuit configurations

## Electrical Characteristics

Circuit:	Single phase and three phase full wave bridge
AC Input:	Up to 1600 PRV
DC Output:	Up to 12 Amps DC (25°C Amb.-Chassis mounted)
Surge Current	
Rating:	250 Amps peak for one cycle (25°C Amb.)
Loads:	Resistive, Inductive, Capacitive, Continuous
Duty Cycle:	Continuous
Cooling:	Convection
Design Features:	The series EH diodes are housed in an epoxy sealed case. Convenient faston or stud terminals as specified.



**Microsemi Corp.**  
**Colorado**

PH: 303-469-2161  
FAX: 303-460-3775