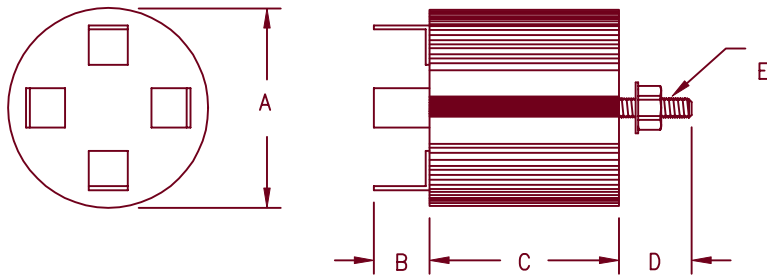


Encapsulated Assemblies

ER Series



Dimensions			
	Inches	Millimeters	Notes
A	1.31	33.3	
B	0.44	11.1	
C	1.06	26.9	
D	0.47	11.9	
E	---	---	1

Note 1: 1/4"-20 Mounting Stud

Microsemi
Catalog Number

Max. PRV Rating
Per Circuit Arm

ER*2B1	200
ER*4B1	400
ER*6B1	600
ER*8B1	800
ER*10B1	1000
ER*12B1	1200
ER*14B1	1400
ER*16B1	1600

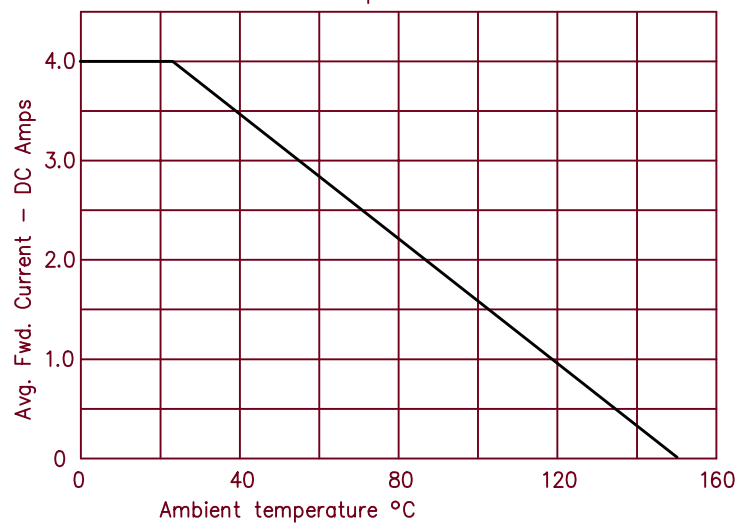
*Add F for Faston Terminal
*Add L for Flexible lead (min length-4")

- Encapsulated in rounded case
- Single phase bridge
- PRV rating up to 1600 PRV
- Completely sealed, compact, corrosion and moisture resistant

Electrical Characteristics

Circuit: Single phase full wave bridge
AC Input: Up to 1600 PRV
DC Output: Up to 4 Amps DC
Surge Current Rating: 250 Amps peak for one cycle
Loads: Resistive, Inductive, Capacitive, Continuous
Duty Cycle: Continuous
Cooling: Convection
Design Features: Diodes housed in an epoxy sealed case. Faston terminals or flexible leads.

Single-phase bridge current ratings (resistive-inductive)
loads derate 20% for capacitive load



3-12-01 Rev. 1