

Surface Mount Frequency Mixer

ADE-14+ ADE-14

Level 7 (LO Power +7 dBm) 800 to 1000 MHz



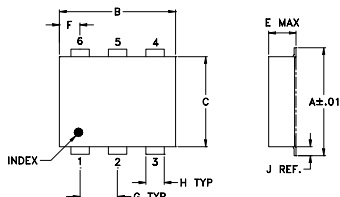
Maximum Ratings

Operating Temperature	-40°C to 85°C
Storage Temperature	-55°C to 100°C
RF Power	50mW
IF Current	40mA

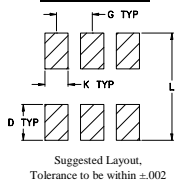
Pin Connections

LO	6
RF	4
IF	3
GROUND	1,2,5

Outline Drawing



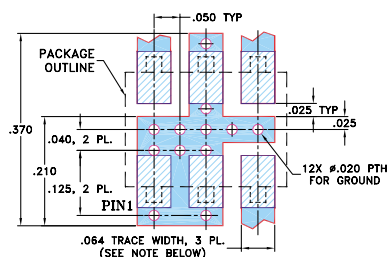
PCB Land Pattern



Outline Dimensions (inch)

A	B	C	D	E	F	G
.272	.310	.220	.100	.082	.055	.100
6.91	7.87	5.59	2.54	2.08	1.40	2.54
H	J	K	L			wt
.030	.026	.065	.300			grams
0.76	0.66	1.65	7.62			0.15

Demo Board MCL P/N: TB-02 Suggested PCB Layout (PL-051)



NOTES: 1. TRACE WIDTH IS SHOWN FOR ROGERS RO4350B WITH DIELECTRIC THICKNESS .030" ± .002"; COPPER: 1/2 OZ. EACH SIDE. FOR OTHER MATERIALS TRACE WIDTH MAY NEED TO BE MODIFIED.
2. BOTTOM SIDE OF THE PCB IS CONTINUOUS GROUND PLANE.
DENOTES PCB COPPER LAYOUT WITH SMOBC (SOLDER MASK OVER BARE COPPER)
DENOTES COPPER LAND PATTERN FREE OF SOLDER MASK

Features

- low conversion loss, 7.4 dB typ.
- good L-I isolation, 34 dB typ.
- low profile package
- aqueous washable
- protected by U.S. Patent 6,133,525

Applications

- cellular
- ISM/GSM

CASE STYLE: CD541

PRICE: \$3.25 ea. QTY (10-49)

+ RoHS compliant in accordance with EU Directive (2002/95/EC)

The +Suffix identifies RoHS Compliance. See our web site for RoHS Compliance methodologies and qualifications.

Electrical Specifications

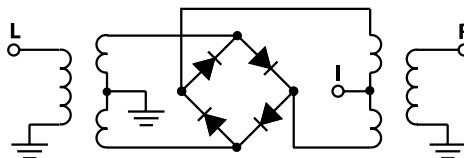
FREQUENCY (MHz)	CONVERSION LOSS (dB)	LO-RF ISOLATION (dB)	LO-IF ISOLATION (dB)	IP3 at center band (dBm)
LO/RF $f_L - f_U$	\bar{X} σ Total Range Max.	Typ. Min.	Typ. Min.	Typ.
800-1000 DC-200	7.4 0.20 8.9	32 22	34 20	17

1 dB COMP.: +1 dBm typ.

Typical Performance Data

Frequency (MHz)		Conversion Loss (dB)	Isolation L-R (dB)	Isolation L-I (dB)	VSWR RF Port (:1)	VSWR LO Port (:1)
RF	LO	LO +7dBm	LO +7dBm	LO +7dBm	LO +7dBm	LO +7dBm
800.00	830.00	7.02	36.37	36.86	1.44	3.88
810.00	840.00	6.98	36.36	36.71	1.44	3.87
820.00	850.00	6.99	36.37	36.56	1.45	3.84
830.00	860.00	6.99	36.34	36.36	1.46	3.84
840.00	870.00	6.97	36.30	36.04	1.47	3.89
850.00	880.00	6.97	36.26	35.74	1.48	3.98
860.00	890.00	6.95	36.22	35.40	1.48	4.12
870.00	900.00	6.96	36.16	35.08	1.48	4.26
880.00	910.00	6.98	36.11	34.79	1.49	4.35
890.00	920.00	7.01	36.09	34.52	1.50	4.37
900.00	930.00	7.05	36.15	34.35	1.52	4.33
910.00	940.00	7.06	36.23	34.21	1.53	4.29
921.25	951.25	7.06	36.31	34.06	1.54	4.31
932.50	962.50	7.08	36.38	33.86	1.54	4.46
943.75	973.75	7.09	36.45	33.65	1.55	4.68
955.00	985.00	7.15	36.46	33.37	1.57	4.91
966.25	996.25	7.20	36.47	33.07	1.58	5.08
977.50	1007.50	7.27	36.46	32.82	1.60	5.12
988.75	1018.75	7.29	36.55	32.63	1.62	5.08
1000.00	1030.00	7.28	36.69	32.47	1.62	5.04

Electrical Schematic



Mini-Circuits®

INTERNET <http://www.minicircuits.com>

P.O. Box 350166, Brooklyn, New York 11235-0003 (718) 934-4500 Fax (718) 332-4661

Distribution Centers NORTH AMERICA 800-654-7949 • 417-335-5935 • Fax 417-335-5945 • EUROPE 44-1252-832600 • Fax 44-1252-837010

Mini-Circuits ISO 9001 & ISO 14001 Certified



REV. D
M98898
ADE-14
ED-6103/1
DJ/TD/CP/AM
060613
Page 1 of 2

Performance Charts

ADE-14+ ADE-14

