

Surface Mount Frequency Mixer

Level 7 (LO Power +7 dBm) 2300 to 2700 MHz

ADE-3G+
ADE-3G



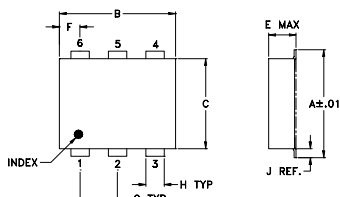
Maximum Ratings

Operating Temperature	-40°C to 85°C
Storage Temperature	-55°C to 100°C
RF Power	50mW
IF Current	40mA

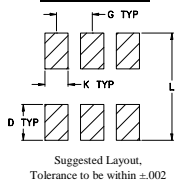
Pin Connections

LO	6
RF	3
IF	2
GROUND	1,4,5

Outline Drawing



PCB Land Pattern

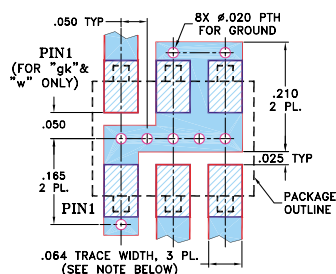


Outline Dimensions (inch)

A	B	C	D	E	F	G
.272	.310	.220	.100	.112	.055	.100
6.91	7.87	5.59	2.54	2.84	1.40	2.54

H	J	K	L	wt
.030	.026	.065	.300	grams
0.76	0.66	1.65	7.62	0.20

Demo Board MCL P/N: TB-03 Suggested PCB Layout (PL-052)



- NOTES: 1. TRACE WIDTH IS SHOWN FOR ROGERS RO4350B WITH DIELECTRIC THICKNESS .030" ± .002"; COPPER: 1/2 OZ. EACH SIDE. FOR OTHER MATERIALS TRACE WIDTH MAY NEED TO BE MODIFIED.
2. BOTTOM SIDE OF THE PCB IS CONTINUOUS GROUND PLANE.
- DENOTES PCB COPPER LAYOUT WITH SMOBC (SOLDER MASK OVER BARE COPPER)
□ DENOTES COPPER LAND PATTERN FREE OF SOLDER MASK

Features

- low conversion loss, 5.6 dB typ.
- good L-R isolation, 36 dB typ.
- low profile package
- aqueous washable
- low cost
- protected by U.S. Patent 6,133,525

Applications

- wireless/VSAT systems
- ISM

CASE STYLE: CD542
PRICE: \$3.45 ea. QTY (10-49)

+ RoHS compliant in accordance with EU Directive (2002/95/EC)

The +Suffix identifies RoHS Compliance. See our web site for RoHS Compliance methodologies and qualifications.

Electrical Specifications

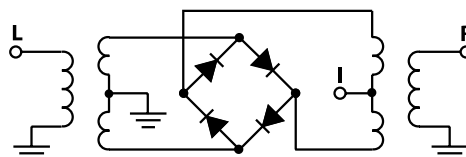
FREQUENCY (MHz)		CONVERSION LOSS (dB)			LO-RF ISOLATION (dB)		LO-IF ISOLATION (dB)		IP3 at center band (dBm)
LO/RF	IF	\bar{X}	σ	Max.	Typ.	Min.	Typ.	Min.	
2300-2700	DC-400	5.8	0.10	7.0	35	25	26	17	13

1 dB COMP.: +1 dBm typ.
Phase detection, positive polarity

Typical Performance Data

Frequency		Conversion Loss (dB)	Isolation L-R (dB)	Isolation L-I (dB)	VSWR RF Port (:1)	VSWR LO Port (:1)
RF MHz	LO MHz	LO +7dBm	LO +7dBm	LO +7dBm	LO +7dBm	LO +7dBm
2300.00	2330.00	5.75	41.50	25.30	1.28	1.76
2321.05	2351.05	5.85	41.30	25.70	1.27	1.80
2342.11	2372.11	5.88	41.00	26.00	1.23	1.85
2363.16	2393.16	5.89	41.00	26.20	1.24	1.87
2384.21	2414.21	5.91	40.80	26.40	1.25	1.85
2405.26	2435.26	5.82	40.60	26.80	1.24	1.84
2426.32	2456.32	5.79	40.40	27.10	1.25	1.80
2447.37	2477.37	5.69	40.00	27.30	1.25	1.80
2468.42	2498.42	5.65	39.20	27.70	1.27	1.82
2489.47	2519.47	5.59	38.50	27.80	1.28	1.84
2510.53	2540.53	5.65	38.10	28.00	1.29	1.85
2531.58	2561.58	5.63	37.80	28.20	1.31	1.82
2552.63	2582.63	5.64	38.10	28.20	1.34	1.78
2573.68	2603.68	5.54	38.00	28.10	1.38	1.77
2594.74	2624.74	5.61	37.10	28.20	1.39	1.73
2615.79	2645.79	5.63	36.20	28.20	1.40	1.70
2636.84	2666.84	5.63	35.80	28.20	1.43	1.67
2657.90	2687.90	5.59	35.30	28.00	1.48	1.63
2678.95	2708.95	5.54	35.00	27.90	1.50	1.59
2700.00	2730.00	5.53	34.70	27.70	1.53	1.54

Electrical Schematic



Mini-Circuits®

Distribution Centers NORTH AMERICA 800-654-7949 • 417-335-5935 • Fax 417-335-5945 • EUROPE 44-1252-832600 • Fax 44-1252-837010

Mini-Circuits ISO 9001 & ISO 14001 Certified

INTERNET <http://www.minicircuits.com>



REV. D
M98898
ADE-3G
ED-6806/1
DJ/TD/CP/AM
060613
Page 1 of 2

Performance Charts

