

Surface Mount RF Transformer

50Ω 30 to 1800 MHz

ADTL2-18+
ADTL2-18

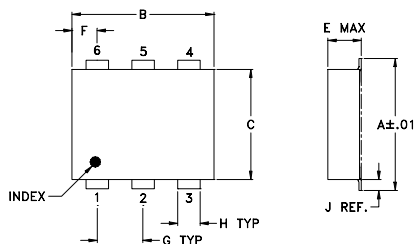
Maximum Ratings

Operating Temperature	-20°C to 85°C
Storage Temperature	-55°C to 100°C
RF Power	0.25W
DC Current	30mA

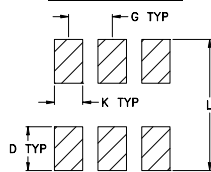
Pin Connections

PRIMARY DOT	1
PRIMARY	3
SECONDARY DOT	6
SECONDARY	4
NOT USED	2,5

Outline Drawing



PCB Land Pattern



Suggested Layout,
Tolerance to be within ±.002

Outline Dimensions (inch)

A	B	C	D	E	F	G
.272	.310	.220	.100	.112	.055	.100
6.91	7.87	5.59	2.54	2.84	1.40	2.54

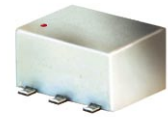
H	J	K	L	wt
.030	.026	.065	.300	grams
0.76	0.66	1.65	7.62	0.20

Features

- wideband, 30 to 1800 MHz
- balanced transmission line
- excellent amplitude unbalance, 0.3 dB typ.
- and phase unbalance, 3 deg. typ. in 1dB bandwidth
- aqueous washable
- protected under US patent 6,133,525

Applications

- baluns
- wideband impedance matching
- cellular
- PCN
- GPS



CASE STYLE: CD542

PRICE: \$3.95 ea. QTY (10-49)

+ RoHS compliant in accordance
with EU Directive (2002/95/EC)

The +Suffix identifies RoHS Compliance. See our web site
for RoHS Compliance methodologies and qualifications.

Transformer Electrical Specifications

Ω RATIO	FREQUENCY (MHz)	INSERTION LOSS*			PHASE UNBALANCE (Deg.) Typ.		AMPLITUDE UNBALANCE (dB) Typ.	
		3 dB MHz	2 dB MHz	1 dB MHz	1 dB bandwidth	2 dB bandwidth	1 dB bandwidth	2 dB bandwidth
2	30-1800	30-1800	-	100-1500	3	-	0.3	-

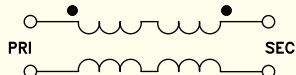
* Insertion Loss is referenced to mid-band loss, 0.6 dB typ.

** Deviation from 180°

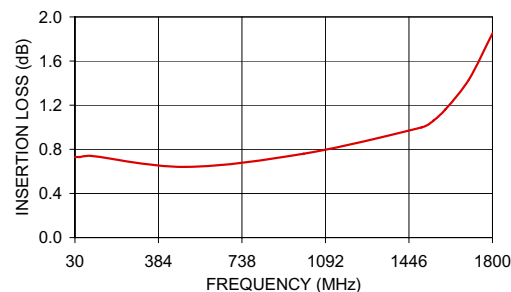
Typical Performance Data

FREQUENCY (MHz)	INERTION LOSS (dB)	INPUT R. LOSS (dB)	AMPLITUDE UNBALANCE (dB)	PHASE UNBALANCE (Deg.)
30.00	0.73	10.06	1.07	5.86
50.00	0.73	10.01	0.95	3.68
100.00	0.74	9.96	0.85	1.64
500.00	0.64	11.73	0.64	2.41
1000.00	0.76	13.14	0.25	3.74
1500.00	1.00	14.50	0.18	1.90
1550.00	1.06	14.22	0.22	1.55
1600.00	1.16	13.58	0.24	1.24
1700.00	1.43	11.56	0.30	0.50
1800.00	1.85	9.44	0.34	0.29

Config. G



ADTL2-18
INSERTION LOSS



Mini-Circuits®

Distribution Centers NORTH AMERICA 800-654-7949 • 417-335-5935 • Fax 417-335-5945 • EUROPE 44-1252-832600 • Fax 44-1252-837010

Mini-Circuits ISO 9001 & ISO 14001 Certified

INTERNET <http://www.minicircuits.com>



REV. B
M98898
ADTL2-18
ED-8193/1
IG/TD/CP
060614