

Coaxial

# Low Pass Filter

75Ω DC to 580 MHz

## Maximum Ratings

Operating Temperature	-55°C to 100°C
Storage Temperature	-55°C to 100°C
RF Power Input	0.5W max.

## Features

- rugged shielded case
- other standard and custom BLP models available with wide selection of fco

## Applications

- test equipment
- lab use
- video equipment

# BLP-600-75+ BLP-600-75



CASE STYLE: FF55

Connectors	Model	Price	Qty.
BNC	BLP-600-75(+)	\$33.95 ea.	(1-9)

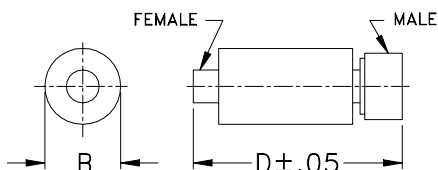
**+ RoHS compliant in accordance with EU Directive (2002/95/EC)**

The +Suffix identifies RoHS Compliance. See our web site for RoHS Compliance methodologies and qualifications.

## Low Pass Filter Electrical Specifications

PASSBAND (MHz)	fco (MHz) Nom.	STOPBAND (MHz)	VSWR (:1)
(loss < 1 dB)	(loss 3 dB)	(loss > 20 dB) (loss > 40 dB)	Passband Typ. Stopband Typ.
DC-580	640	840-1120 1120-2000	1.7 18

## Outline Drawing

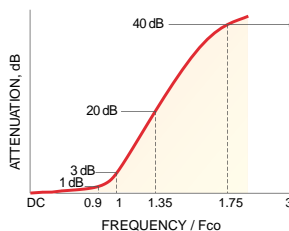


B—OVERALL BODY DIMENSION

## Outline Dimensions (inch/mm)

B	D	wt
.54	2.59	grams
13.72	65.79	40.0

## typical frequency response



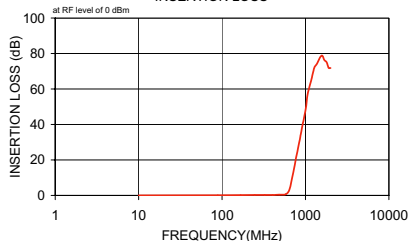
## electrical schematic



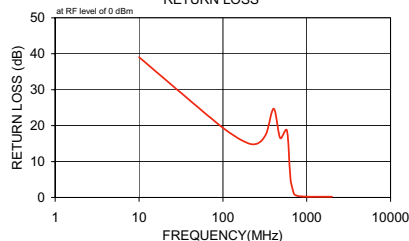
## Typical Performance Data

Frequency (MHz)	Insertion Loss (dB)	Return Loss (dB)	Frequency (MHz)	Group Delay (nsec)
	$\bar{x}$ $\sigma$			
10.00	0.03 0.01	39.03	10.00	1.68
88.80	0.06 0.02	20.33	11.91	1.58
167.50	0.17 0.03	15.95	14.07	1.73
246.30	0.23 0.02	14.87	16.62	1.77
325.00	0.24 0.02	17.52	19.64	1.66
403.80	0.23 0.04	24.71	23.20	1.61
482.50	0.45 0.10	16.54	27.40	1.68
580.00	0.67 0.11	18.62	32.00	1.65
640.00	3.15 1.32	5.36	38.24	1.65
700.00	11.10 2.40	1.10	45.17	1.65
728.00	15.12 2.59	0.69	53.36	1.65
756.00	19.01 2.76	0.52	63.04	1.66
784.00	22.88 2.93	0.40	74.46	1.66
812.00	26.53 3.06	0.34	87.96	1.65
840.00	29.84 3.26	0.32	103.91	1.65
868.00	33.13 3.50	0.28	122.75	1.65
918.40	39.24 4.03	0.25	145.00	1.66
968.80	44.53 4.60	0.23	171.29	1.67
1019.20	50.42 5.97	0.22	202.35	1.68
1059.60	56.66 9.07	0.22	235.74	1.71
1120.00	61.58 9.70	0.22	278.48	1.77
1170.00	64.81 7.30	0.22	324.43	1.84
1273.80	71.86 7.17	0.21	383.24	1.98
1377.50	74.32 4.38	0.21	446.48	2.14
1481.30	77.46 5.00	0.21	527.43	2.48
1585.00	78.86 4.18	0.21	580.00	3.15
1688.80	76.30 5.08	0.21	640.00	3.69
1792.50	75.09 5.40	0.20	840.00	1.27
1896.30	71.89 4.47	0.20	1120.00	1.50
2000.00	71.83 6.46	0.19	1163.76	1.13

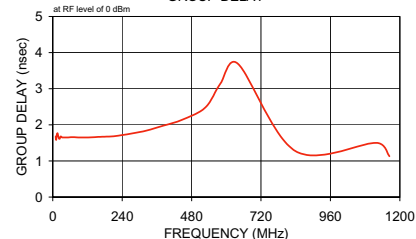
## INSERTION LOSS



## RETURN LOSS



## GROUP DELAY



# Mini-Circuits®

Distribution Centers NORTH AMERICA 800-654-7949 • 417-335-5935 • Fax 417-335-5945 • EUROPE 44-1252-832600 • Fax 44-1252-837010

Mini-Circuits ISO 9001 & ISO 14001 Certified

INTERNET <http://www.minicircuits.com>

P.O. Box 350166, Brooklyn, New York 11235-0003 (718) 934-4500 Fax (718) 332-4661

REV. A  
M98898  
BLP-600-75  
060531