

Coaxial RF Transformer

50Ω

0.01 to 125 MHz

FTB-1-6+
FTB-1-6



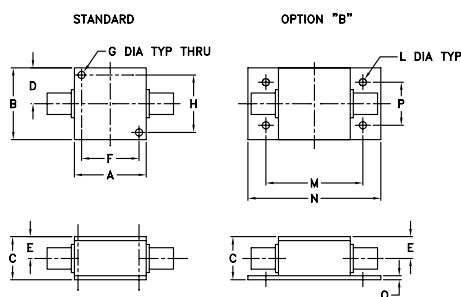
Maximum Ratings

Operating Temperature	-55°C to 100°C
Storage Temperature	-55°C to 100°C
RF Power	250mW
DC Current	30mA

Coaxial Connections

	Marking
PRIMARY	BAL
SECONDARY	UNBAL

Outline Drawing

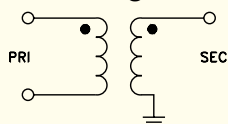


Outline Dimensions (inch/mm)

A	B	C	D	E	F	G	H
1.25	1.25	.75	.63	.38	1.000	.125	1.000
31.75	31.75	19.05	16.00	9.65	25.40	3.18	25.40

J	K	L	M	N	P	Q	wt
--	--	.125	1.688	2.18	.75	.07	grams
--	--	3.18	42.88	55.37	19.05	1.78	70.0

Config. E



Features

- balanced to single-ended
- balanced port: isolated Female BNC

Applications

- DC Block

CASE STYLE: H16

BNC Connectors	Model	Price	Qty.
FEMALE/FEMALE	FTB-1-6*A15(+)	\$36.95	(1-9)
MALE/FEMALE	FTB-1-6*C15(+)	\$36.95	(1-9)
BRACKET (OPTION "B")		\$2.50	(1+)

+ RoHS compliant in accordance with EU Directive (2002/95/EC)

The +Suffix identifies RoHS Compliance. See our web site for RoHS Compliance methodologies and qualifications.

Transformer Electrical Specifications

Ω RATIO	FREQUENCY (MHz)	INSERTION LOSS*		
		3 dB MHz	2 dB MHz	1 dB MHz
1	0.01-125	0.01-125	0.05-50	0.1-25

* Insertion Loss is referenced to mid-band loss, 0.2 dB typ.

Typical Performance Data

FREQUENCY (MHz)	INSERTION LOSS (dB)	INPUT R. LOSS (dB)
0.01	0.45	9.03
0.02	0.19	14.65
0.05	0.10	22.68
0.10	0.10	29.17
0.20	0.10	34.28
25.00	0.38	12.89
50.00	0.89	8.56
62.67	0.97	7.71
118.44	1.28	6.04
125.00	1.29	6.02

FTB-1-6
INSERTION LOSS

